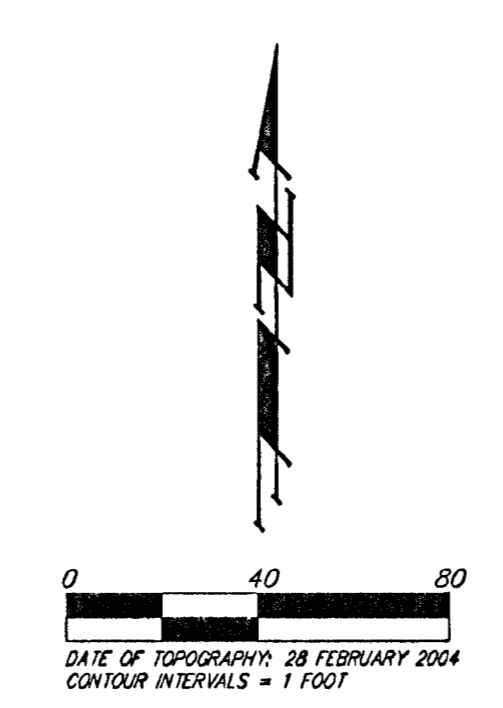
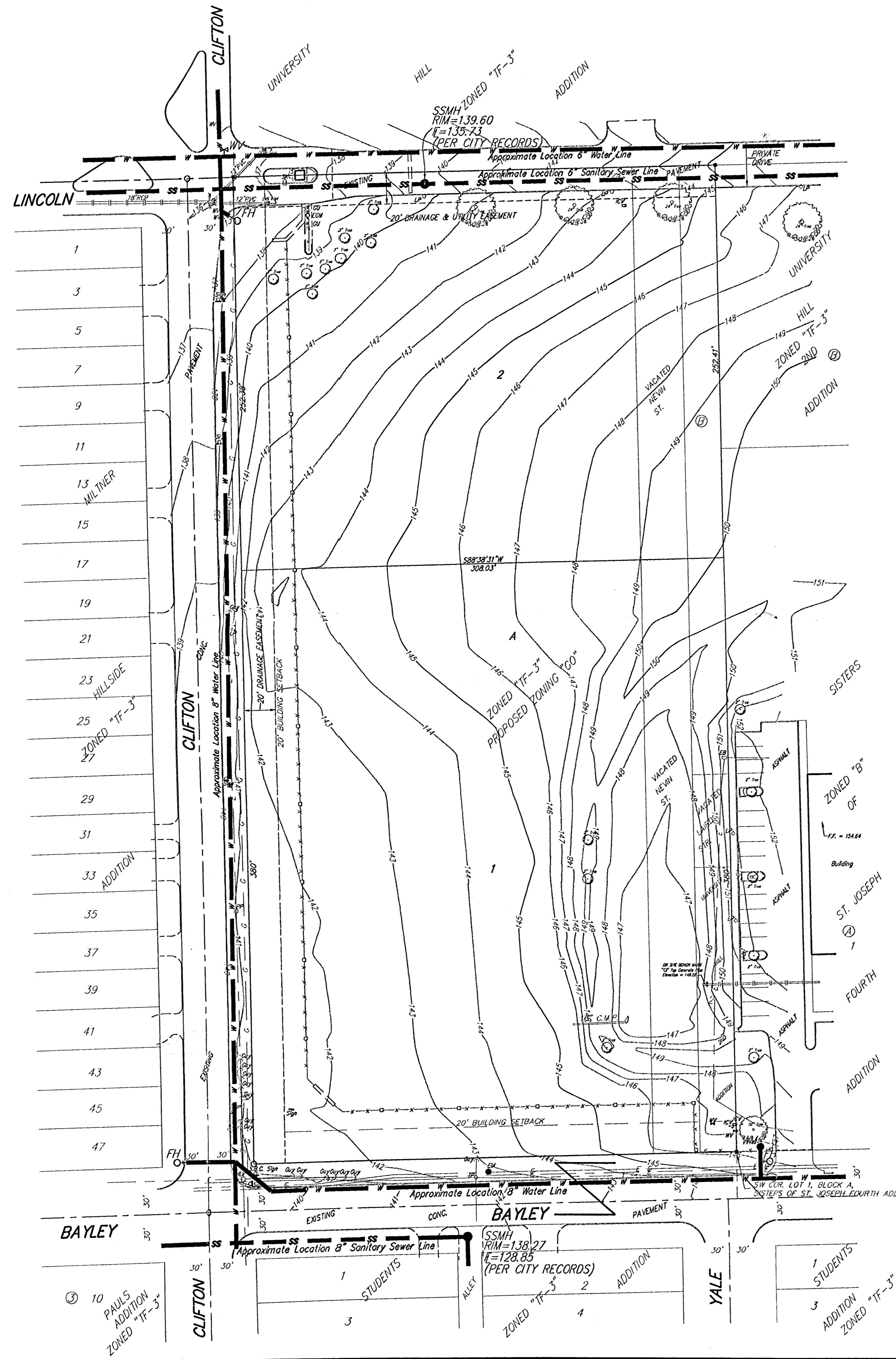


UTILITY PLAN

SISTERS OF ST. JOSEPH 6TH ADDITION

WICHITA, SEDGWICK COUNTY, KANSAS



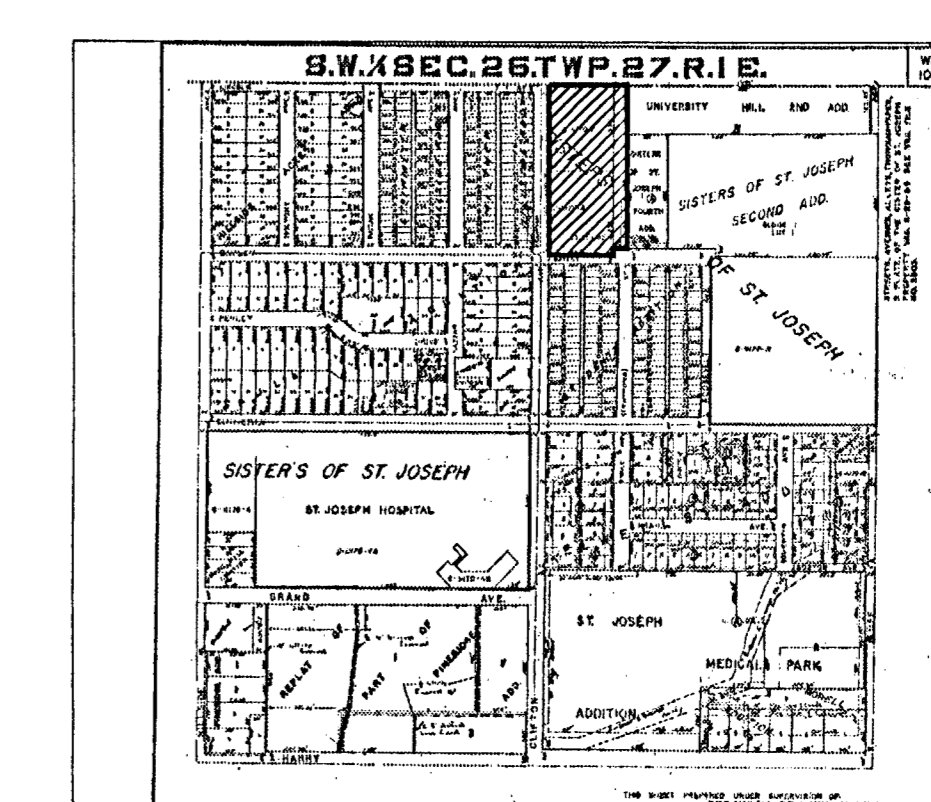
DATE OF TOPOGRAPHY: 28 FEBRUARY 2004
 CONTOUR INTERVALS = 1 FOOT

OWNER/DEVELOPER:
 The Sisters of St. Joseph of Wichita, Kansas
 3700 E. Lincoln
 Wichita, KS 67218
 Ph: 316 658-7171

BENCHMARK:
 City of Wichita benchmark disc - NW corner of intersection
 of Harry and Bluffview on base of traffic signal pole.
 3.50' North of north curb
 42.50' North of centerline of Harry
 48.50' West of centerline of Bluffview
 Elev. = 152.22 City Datum
 1339.82 NGVD29

- = #4 REDAR W/ "BAUGHMAN" CAP (SET)
 - = 3/4" IRON (FOUND)
 - (M) = MEASURED
 - (D) = DESCRIBED
 - (P) = PLATTED
 - (C) = CALCULATED
- EB = Electric Box
 - GV = Gas Valve
 - FH = Fire Hydrant
 - LP = Light Pole
 - HLP = High Line Pole
 - PP = Power Pole
 - ICV = Irrigation Control Valve - Valve Box
 - GP = Guy Pole
 - WM = Water Meter
 - WV = Water Valve
 - ▲ Sign = Sign
 - TP = Telephone Pole
 - Guy = Guy Anchor
 - EV = Electric Vault
 - EM = K.G.R. E. Manhole
 - SSMH = Sanitary Sewer Manhole
 - SK = Security Keypad
 - QJ = Guard Post(Bollard)
 - EGM = Electric gate Motor
- Tree (w/ Size)

NOTE:
 A drainage plan has been developed for this subdivision and is on file with the City of Wichita, Kansas. Drainage intent shall remain as depicted or as modified with the approval of the City Engineer of the City of Wichita, Kansas. No obstructions which impede the flow of this drainage plan shall be allowed.



VICINITY MAP

LEGEND

