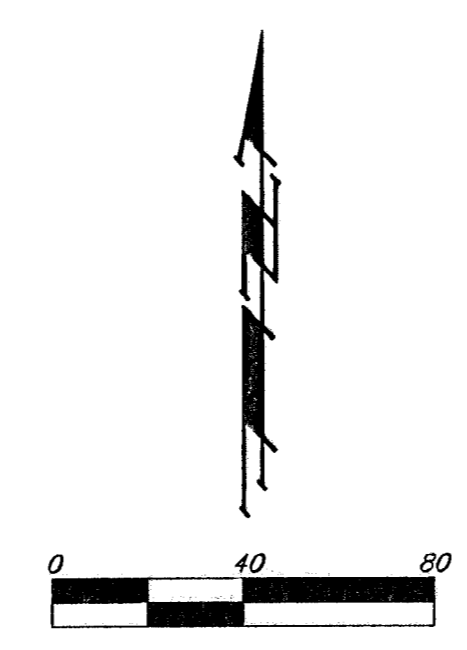
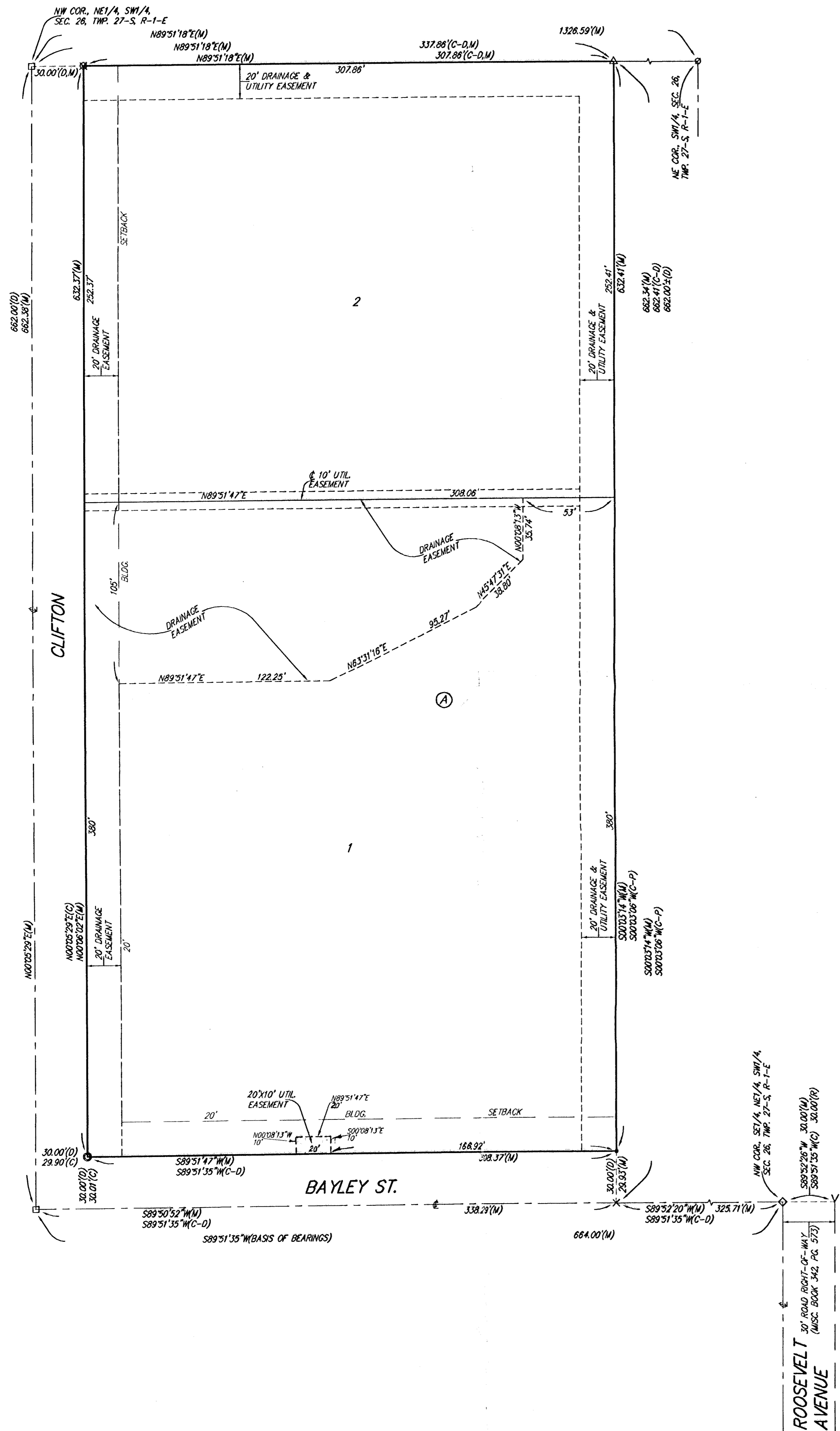


SISTERS OF ST. JOSEPH 6TH ADDITION WICHITA, SEDGWICK COUNTY, KANSAS

4/
12/
04



- = #4 REBAR W/ "BAUGHMAN" CAP (SET)
 - = #4 REBAR W/ "BAUGHMAN" CAP (FOUND)
 - = OVER 3/4" IRON (FOUND) 30" DEEP
 - = 3/4" IRON IN THUMB (FOUND)
 - △ = 7/8" IRL (SET)
 - ◇ = CHASELED CROSS (FOUND)
 - = 3/4" IRON (FOUND)
 - ⊗ = CHASELED CROSS (SET)
 - ∨ = CHASELED "V" NOTCH (FOUND)
 - ◇ = 3/4" IRON (FOUND) ADJACENT TO WEST SIDE OF DIRECTIONAL SIGN BASE, 1 1/2" DEEP.
- (M) = MEASURED
(D) = DESCRIBED
(C-D) = CALCULATED PER DESCRIBED INFO.
(C-P) = CALCULATED PER PLATTED INFO.

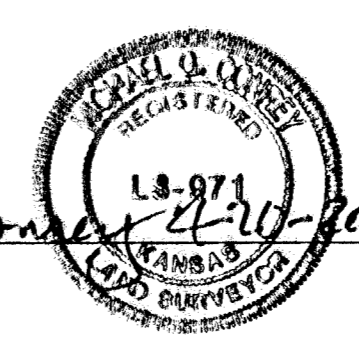
NOTE:
A drainage plan has been developed for this subdivision and is on file with the City of Wichita, Kansas. Drainage intent shall remain as depicted or as modified with the approval of the City Engineer of the City of Wichita, Kansas. No obstructions which impede the flow of this drainage plan shall be allowed.

State of Kansas) SS We, *Baughman Company, P.A.*, Surveyors in Sedgwick County) do hereby certify that we have surveyed and platted "SISTERS OF ST. JOSEPH 6TH ADDITION", Wichita, Sedgwick County, Kansas and that the accompanying plat is a true and correct exhibit of the property surveyed, described as beginning at the NW corner of the NE 1/4 of the SW 1/4 of Sec. 26, Twp. 27-S, R-1-E of the 6th P.M., Sedgwick County, Kansas; thence southerly along the west line of the NE 1/4 of said SW 1/4, 662.00 feet; thence easterly to the intersection with the west line of Sisters of St. Joseph Fourth Addition to Wichita, Sedgwick County, Kansas, as extended southerly, said intersection being 30.00 feet south of the SW corner of Lot 1, Block A, in said Sisters of St. Joseph Fourth Addition; thence northerly along the extended west line of said Sisters of St. Joseph Fourth Addition, and as extended northerly, 662.00 feet, more or less, to a point on the north line of the NE 1/4 of said SW 1/4; thence westerly along the north line of the NE 1/4 of said SW 1/4 to the point of beginning, all being subject to road rights-of-way over the west 30.00 feet and the south 30.00 feet thereof.

All being situated in the SW 1/4 of Sec. 26, Twp. 27-S, R-1-E of the 6th P.M., Sedgwick County, Kansas.

Existing public easements and dedications being vacated by virtue of K.S.A. 12-512(b).

Baughman Company, P.A.



Know all men by these presents that we, the undersigned, have caused the land in the surveyors certificate to be platted into Lots, a Block, and a Streets to be known as "SISTERS OF ST. JOSEPH 6TH ADDITION", Wichita, Sedgwick County, Kansas. The utility easement is hereby granted as indicated for the construction and maintenance of all public utilities. The drainage and utility easements are hereby granted as indicated for drainage purposes and for the construction and maintenance of all public utilities. The drainage easements are hereby granted as indicated for drainage purposes.

The Sisters of Saint Joseph of Wichita, Kansas, a Kansas not-for-profit corporation

Sister Helene Lentz, President
Sister Helene Lentz

Sister Pamela Young, Secretary
Sister Pamela Young

State of Kansas) SS The foregoing instrument acknowledged before me, this 21st day of April, 2004, by Sister Helene Lentz, President of The Sisters of Saint Joseph of Wichita, Kansas, a Kansas not-for-profit corporation, on behalf of the corporation.

Mary Storer Reed, Notary Public
MARY STORER REED
NOTARY PUBLIC
STATE OF KANSAS
My App't. Exp. 6/30/07

State of Kansas) SS The foregoing instrument acknowledged before me, this 21st day of April, 2004, by Sister Pamela Young, Secretary of The Sisters of Saint Joseph of Wichita, Kansas, a Kansas not-for-profit corporation, on behalf of the corporation.

Mary Storer Reed, Notary Public
MARY STORER REED
NOTARY PUBLIC
STATE OF KANSAS
My App't. Exp. 6/30/07

This plat of "SISTERS OF ST. JOSEPH 6TH ADDITION", Wichita, Sedgwick County, Kansas has been submitted to and approved by the Wichita-Sedgwick County Metropolitan Area Planning Commission, Wichita, Kansas.
Dated this _____ day of _____, 2004.
Wichita-Sedgwick County Metropolitan Area Planning Commission

_____, Chair
Ronald L. Marnell

_____, Secretary
John L. Schlegel

This plat approved and all dedications shown hereon accepted by the City Council of the City of Wichita, Kansas, this _____ day of _____, 2004.

_____, Mayor
Carlos Moyans

_____, City Clerk
Karen Schofield

Reviewed in accordance with K.S.A. 58-2005 on this _____ day of _____, 2004.

Tricia L. Robello, L.S. #1246
Deputy County Surveyor
Sedgwick County, Kansas

Entered on transfer record this _____ day of _____, 2004.

_____, County Clerk
Don Brace

State of Kansas) SS This is to certify that this plat has been filed for record in the office of the Register of Deeds, this _____ day of _____, 2004 at _____ o'clock _____ M.; and is duly recorded.

_____, Register of Deeds
Bill Meek

_____, Deputy
Linda Kizzire

