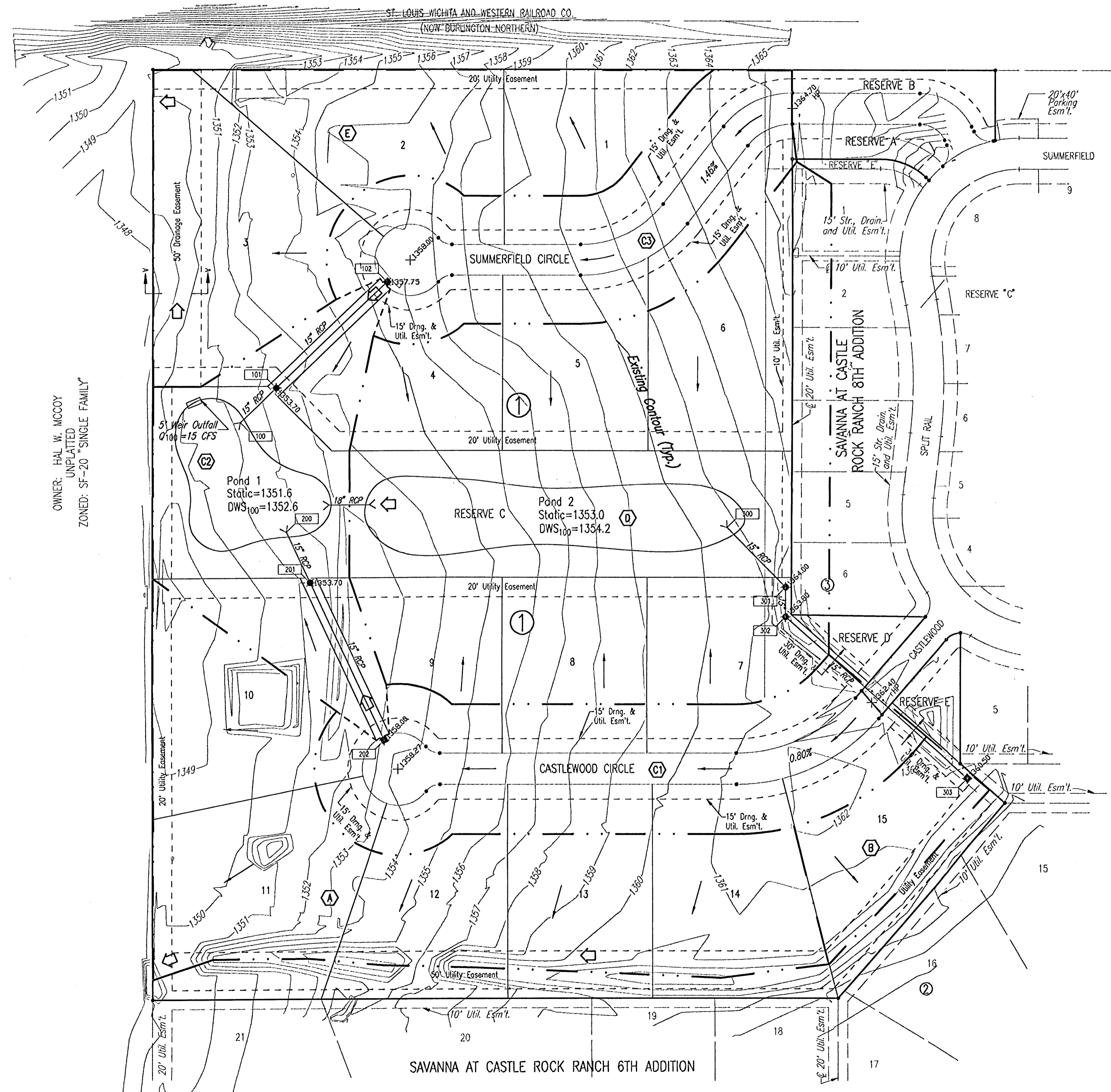


SAVANNA AT CASTLE ROCK RANCH 10TH ADDITION

TO SEDGWICK COUNTY, KANSAS

DRAINAGE PLAN

N.E. CORNER, S.E. 1/4
SEC. 11, T27S, R2E
OF THE 6TH P.M.



OWNER: HAL W. MCCOY
UNPLATTED
ZONED: SF-20 "SINGLE FAMILY"

- BENCHMARKS:**
- BW#2: (DATUM BENCHMARK) CHISELED "2" ON TOP OF STEEL CORNER POST TO HORSE CORRAL 17' NORTH AND 13' WEST OF NW CORNER OF LOT 1, BLOCK 2, SAVANNA @ CASTLE ROCK RANCH 6TH ADDITION @ WEST END OF CASTLEWOOD STREET.
ELEV. = 1353.36 N.G.V.D.
 - BW#4: 600 STEP NAILS IN WEST FACE 36" COTTONWOOD, 300'± SOUTH OF RAILROAD TRACKS; 50' EAST OF WEST PROPERTY LINE OF SAVANNA PROPERTY.
ELEV. = 1351.64 N.G.V.D.
 - BW#6: CHISELED "X" ON NORTH RIM SS MANHOLE NEAR SW CORNER LOT 1, BLOCK 3, SAVANNA @ CASTLE ROCK RANCH, 8TH ADDITION.
ELEV. = 1366.24 N.G.V.D.
 - BW#7: CHISELED "X" ON NORTH RIM SS MANHOLE NEAR SW CORNER LOT 6, BLOCK 3, SAVANNA @ CASTLE ROCK RANCH 8TH ADDITION.
ELEV. = 1365.61 N.G.V.D.

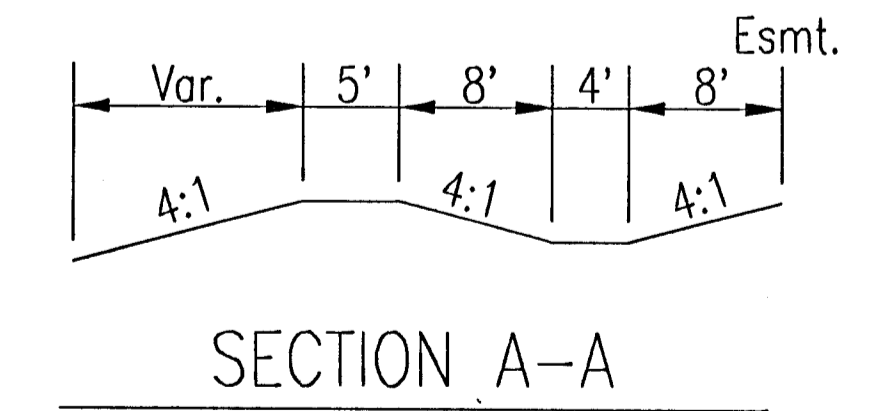
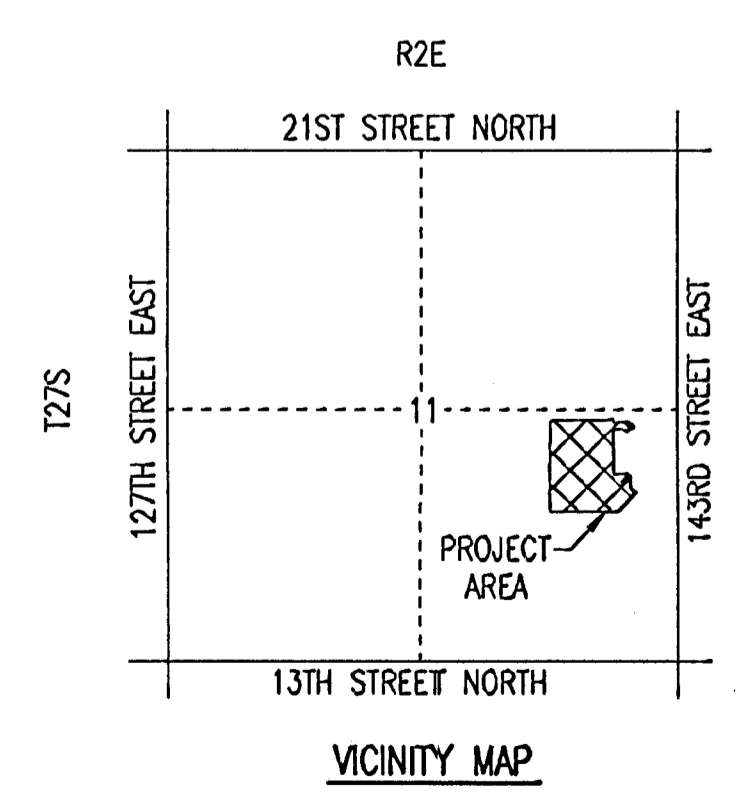
SCALE: 1" = 60'
• = 1/2" REBAR W/PEC CAP UNLESS OTHERWISE NOTED

LEGEND

- (A) BASIN IDENTIFIER
- MAJOR BASIN BOUNDARY
- - - MINOR BASIN BOUNDARY
- ⇨ MAJOR STORM WATER OVERFLOW (Q100)
- ⇨ MINOR STORM WATER FLOW (Q2)
- 130 NODE IDENTIFIER
- X-356.00 SPOT ELEVATION (PROPOSED)
- X-356.00 HP HIGH POINT ELEVATION (PROPOSED)
- STORM SEWER AND INLET
- STORM SEWER AND MANHOLE

SEE SUPPORTING CALCULATIONS FOR HYDROLOGY

MINIMUM OPENINGS	ELEVATION (N.G.V.D.)
BLOCK 1	
LOTS 3 & 10	1354.0
LOTS 4 through 9	1357.2



DSNR: BLB OPER: BLB SCALE: 1"=60.00
C:\2003\03342\DD\03342.dwg\Drainage 03-12-2004 10:18:31 am