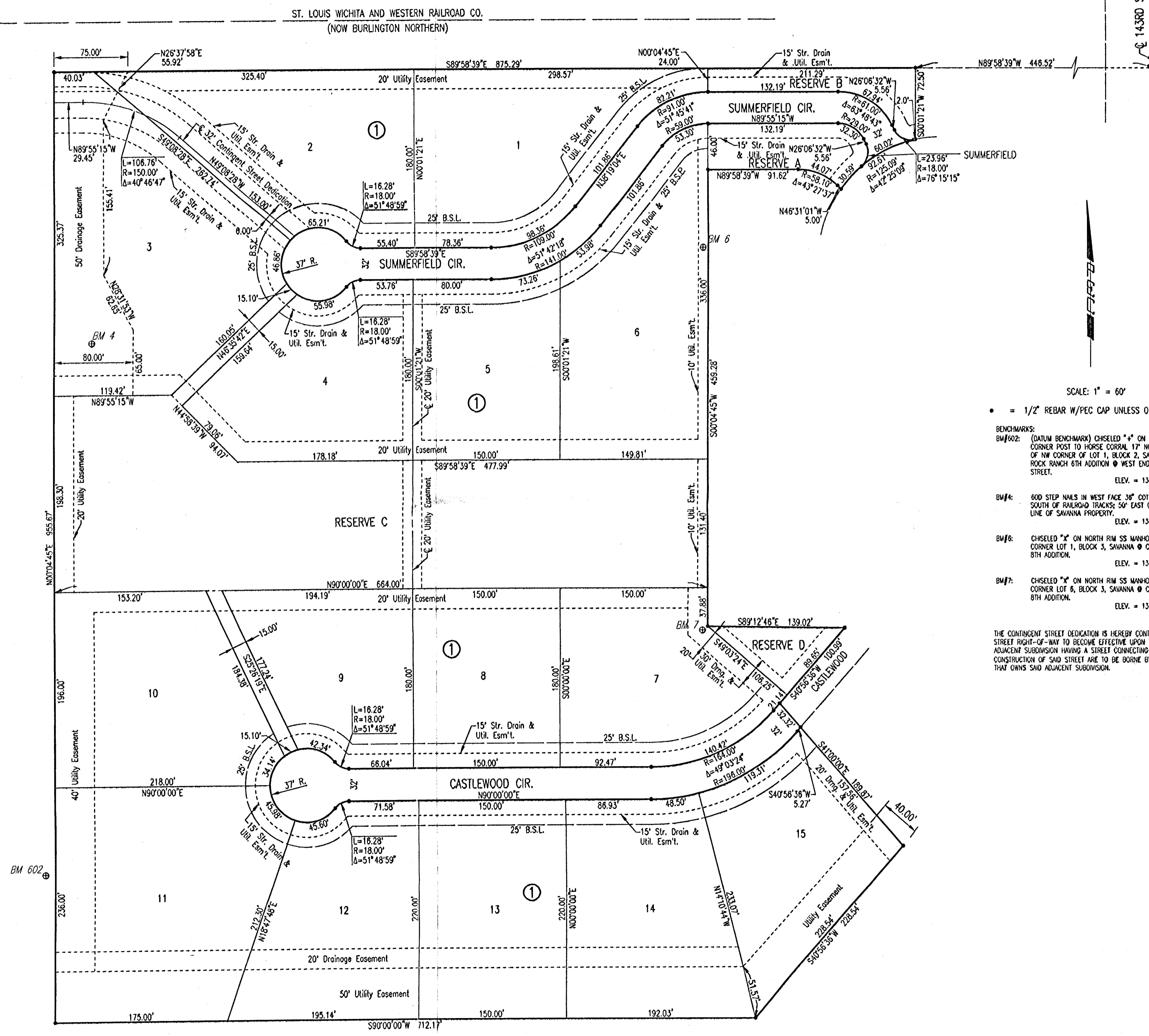


SAVANNA AT CASTLE ROCK RANCH 10TH ADDITION TO SEDGWICK COUNTY, KANSAS

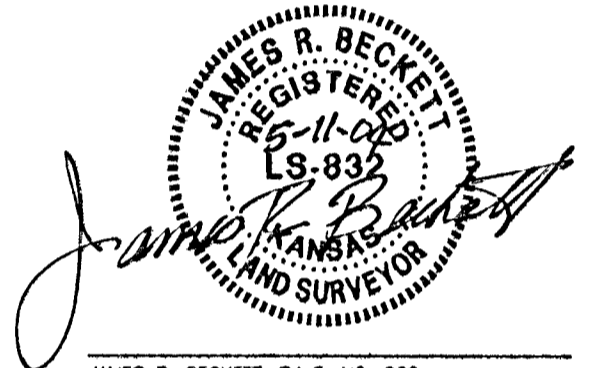


STATE OF KANSAS }
COUNTY OF SEDGWICK } SS

WE, PROFESSIONAL ENGINEERING CONSULTANTS, P.A., ENGINEERS AND SURVEYORS IN FORESAID STATE AND COUNTY, DO HEREBY CERTIFY THAT ON THIS 17th DAY OF MAY, 2004, WE HAVE SURVEYED AND PLATTED SAVANNA AT CASTLE ROCK RANCH 10TH ADDITION TO SEDGWICK COUNTY, KANSAS, INTO LOTS, A BLOCK, STREETS AND RESERVES, THE SAME BEING DESCRIBED AS FOLLOWS:

LOTS 1 THROUGH 14, BLOCK 1, AND LOTS 1 THROUGH 8, BLOCK 2 SAVANNA AT CASTLE ROCK RANCH 8TH ADDITION TO SEDGWICK COUNTY, KANSAS; CASTLEWOOD COURT AND CASTLEWOOD ADJACENT TO SAID LOTS 1 THROUGH 14 AND LOTS 1 THROUGH 8; AND A TRACT OF LAND IN THE EAST 1/2, OF THE SE 1/4, SECTION 11, TOWNSHIP 27 SOUTH, RANGE 2 EAST OF THE 6TH P.M. DESCRIBED AS COMMENCING AT THE N.E. CORNER OF SAID SE 1/4; THENCE BEARING S07°00'00"E ALONG THE EAST LINE OF SAID SE 1/4, A DISTANCE OF 111.23 FEET; THENCE BEARING N89°58'39"W, ALONG THE SOUTH RIGHT-OF-WAY OF THE ST. LOUIS WICHITA WESTERN RAILROAD CO. (NOW BURLINGTON NORTHERN), A DISTANCE OF 1004.00 FEET TO THE POINT OF BEGINNING; SAID POINT BEING THE NORTHWEST CORNER OF LOT 7, BLOCK 1, SAVANNA AT CASTLE ROCK RANCH 8TH ADDITION; THENCE BEARING S07°00'00"E, A DISTANCE OF 761.54 FEET; THENCE BEARING N07°00'00"W, A DISTANCE OF 318.87 FEET TO THE WEST LINE OF THE EAST 1/2 OF THE SE 1/4; THENCE BEARING N07°04'45"E, ALONG SAID WEST LINE, A DISTANCE OF 761.67 FEET TO THE SOUTH RIGHT-OF-WAY LINE OF THE ST. LOUIS WICHITA WESTERN RAILROAD; THENCE BEARING S89°58'39"E ALONG SAID RAILROAD RIGHT-OF-WAY, A DISTANCE OF 317.82 FEET TO THE POINT OF BEGINNING. TOGETHER WITH ALL OF RESERVES E, F, G AND A PORTION OF RESERVE A IN SAVANNA AT CASTLE ROCK RANCH 8TH ADDITION DESCRIBED AS; BEGINNING AT THE NORTHWEST CORNER OF RESERVE A; THENCE BEARING S89°58'39"E ALONG THE NORTH LINE OF RESERVE "A", A DISTANCE OF 239.48 FEET; THENCE BEARING S00°01'21"W, A DISTANCE OF 72.50 FEET TO A POINT ON A CURVE TO THE LEFT HAVING A RADIUS OF 125.00 FEET AND A CHORD BEARING OF S64°41'32"W; THENCE ALONG SAID CURVE THROUGH A CENTRAL ANGLE OF 27°43'17", AN ARC DISTANCE OF 60.52 FEET; THENCE BEARING N48°31'04"W, A DISTANCE OF 5.00 FEET TO THE PC OF SAID CURVE TO THE LEFT, HAVING A RADIUS OF 90.10 FEET; THENCE ALONG SAID CURVE THROUGH A CENTRAL ANGLE OF 43°27'36", AN ARC DISTANCE OF 68.54 FEET TO THE PT OF SAID CURVE; THENCE BEARING N89°58'39"W, A DISTANCE OF 119.87 FEET TO THE SOUTHWEST CORNER OF RESERVE "A"; THENCE BEARING N07°00'00"E, ALONG THE WEST LINE, A DISTANCE OF 70.00 FEET TO THE POINT OF BEGINNING.

ALL PUBLIC EASEMENTS LYING WITHIN THE ABOVE DESCRIBED TRACT OF LAND ARE HEREBY VACATED AND REPLATED BY VIRTUE OF KSA 12-212(d) AMENDED.



JAMES R. BECKETT, R.L.S. NO. 832
PROFESSIONAL ENGINEERING CONSULTANTS, P.A.

MINIMUM OPENINGS	ELEVATION (N.G.V.D.)
BLOCK 1	
LOT 3	1354.6
LOT 10	1354.0
LOTS 4 THROUGH 9	1357.2

THE STREETS ARE HEREBY DEDICATED TO AND FOR THE USE OF THE PUBLIC.

EASEMENTS FOR THE CONSTRUCTION AND MAINTENANCE OF PUBLIC UTILITIES ARE HEREBY GRANTED.

RESERVES "A", "B", "C", "D" AND "E" ARE HEREBY PLATTED FOR LANDSCAPING, ENTRY MONUMENTS, DRAINAGE, AND UTILITIES CONFINED TO EASEMENTS. RESERVE "C" IS HEREBY PLATTED FOR DRAINAGE, LAKES, LANDSCAPING, RECREATIONAL USES AND UTILITIES CONFINED TO EASEMENTS. RESERVES "A" THROUGH "D" SHALL BE OWNED AND MAINTAINED BY AN OWNERS ASSOCIATION TO BE FORMED WITHIN SAVANNA AT CASTLE ROCK RANCH 10TH ADDITION.

A DRAINAGE PLAN HAS BEEN APPROVED FOR THIS PLAT. ALL DRAINAGE EASEMENTS AND RIGHTS-OF-WAY SHALL REMAIN AT ESTABLISHED GRADES AND UNOBTSTRUCTED TO ALLOW FOR THE CONVEYANCE OF STORM WATER, UNLESS MODIFIED WITH THE APPROVAL OF THE CITY ENGINEER.

KNOW ALL MEN BY THESE PRESENTS THAT WE, THE UNDERSIGNED PROPERTY OWNERS OF THE LAND AS ABOVE SET FORTH IN THE SURVEYORS CERTIFICATE, HAVE CAUSED THE LAND TO BE SURVEYED AND PLATTED INTO LOTS, A BLOCK, STREETS, AND RESERVES, THE SAME TO BE KNOWN AS SAVANNA AT CASTLE ROCK RANCH 10TH ADDITION TO SEDGWICK COUNTY, KANSAS.

OWNER:
K & N STEPHENSON, L.P., A KANSAS LIMITED PARTNERSHIP

Kyle Stephenson
KYLE STEPHENSON, GENERAL PARTNER

STATE OF KANSAS }
COUNTY OF SEDGWICK } SS

THIS INSTRUMENT WAS ACKNOWLEDGED BEFORE ME ON THIS 26th DAY OF JAN, 2004, BY KYLE STEPHENSON, GENERAL PARTNER OF K & N STEPHENSON, L.P., A KANSAS LIMITED PARTNERSHIP.

Mary A. Farrar
MARY A. FARRAR, NOTARY PUBLIC

MY APPOINTMENT EXPIRES: 2/27/08



WE, INTRUST BANK, N.A., HOLDER OF A MORTGAGE ON THE ABOVE DESCRIBED PROPERTY, DO HEREBY CONSENT TO THE PLATING OF SAVANNA AT CASTLE ROCK RANCH 10TH ADDITION TO SEDGWICK COUNTY, KANSAS.

Gal Johnson
GAL JOHNSON, SENIOR VICE PRESIDENT

STATE OF KANSAS }
COUNTY OF SEDGWICK } SS

THIS INSTRUMENT WAS ACKNOWLEDGED BEFORE ME ON THIS 26 DAY OF May, 2004, BY GAL JOHNSON, SENIOR VICE PRESIDENT OF INTRUST BANK.

Joleen Barnhart
JOLEEN BARNHART, NOTARY PUBLIC
MY APPOINTMENT EXPIRES: 11-14-07

THIS PLAT OF SAVANNA AT CASTLE ROCK RANCH 10TH ADDITION HAS BEEN SUBMITTED TO AND APPROVED BY THE WICHITA-SEDGWICK COUNTY METROPOLITAN AREA PLANNING COMMISSION, WICHITA, KANSAS.

DATED THIS _____ DAY OF _____, 2004.

WICHITA-SEDGWICK COUNTY METROPOLITAN AREA PLANNING COMMISSION

Ronald L. Maxwell
RONALD L. MAXWELL, CHAIR

John L. Schlegel
JOHN L. SCHLEGEL, SECRETARY

REVIEWED IN ACCORDANCE WITH K.S.A. 58-2005 ON THIS _____ DAY OF _____, 2004.

TRICIA L. ROBELLO, LS #1246
DEPUTY COUNTY SURVEYOR
SEDGWICK COUNTY KANSAS

THIS PLAT IS APPROVED AND ALL DEDICATIONS SHOWN HEREON, IF ANY ARE ACCEPTED BY THE CITY COUNCIL OF THE CITY OF WICHITA, KANSAS, THIS _____ DAY OF _____, 2004.

_____, MAYOR

_____, CITY CLERK

_____, COUNTY CLERK

THIS PLAT IS APPROVED AND ALL DEDICATIONS SHOWN HEREON, IF ANY ARE ACCEPTED BY THE BOARD OF COUNTY COMMISSIONERS OF SEDGWICK COUNTY, KANSAS, THIS _____ DAY OF _____, 2004.

_____, CHAIRMAN

_____, COUNTY CLERK

ENTERED ON TRANSFER RECORD THIS _____ DAY OF _____, 2004.

_____, COUNTY CLERK

_____, REGISTER OF DEEDS

_____, DEPUTY

THIS IS TO CERTIFY THAT THIS INSTRUMENT WAS FILED FOR RECORD IN THE REGISTER OF DEEDS OFFICE AT _____, ON THE _____ DAY OF _____, 2004.

USANK: RWH UPK: JLS SCALE: 1"=60' 04-18-52 pm 04-2003\03342\DD 03342.dwg FINAL PLAT 05-10-2004