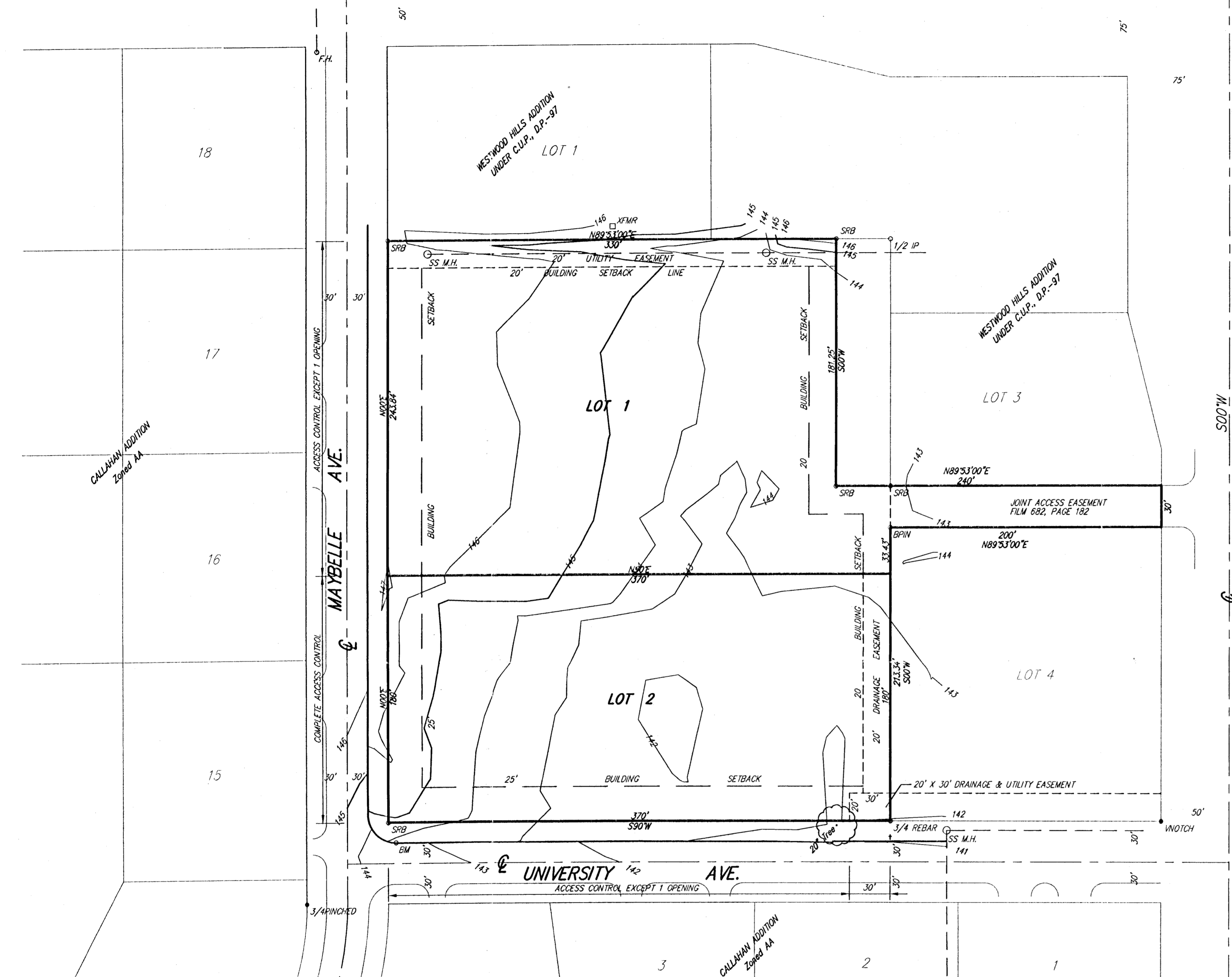


N.E. Cor. N.E. 1/4
Sec. 29, 27S, R1W

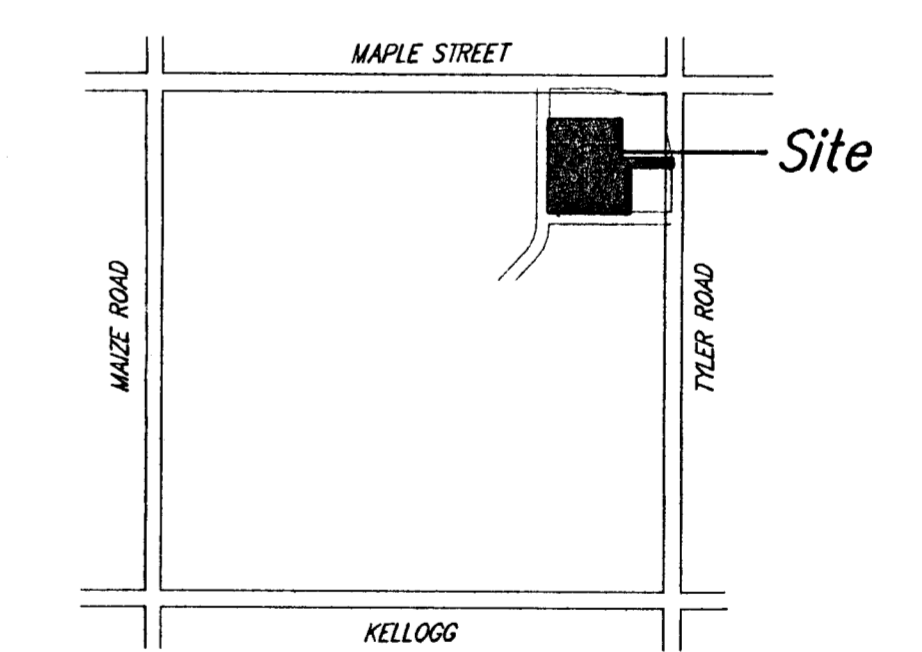
MAPLE STREET



SCALE: 1"=50'
ELEV. = CITY DATUM

City of Wichita Benchmark:
50.7' north and 39.3' east of the C/L of Tyler and Maple
in turn island, 64.3' S.W. to Sec Cor. iron.
Elev. 144.12 (City Datum)

On-Site Bench Mark:
Square Cut, Top of curb east end of curb return
at N.E. Cor. of Maybelle and University.
Elev. 143.76 (City Datum)



PRELIMINARY PLAT SAVANNAH PLACE ADDITION WICHITA, SEDGWICK COUNTY, KANSAS

LEGAL DESCRIPTION :
A replat of Lots 1 and 2, Westwood Hills Addition, Wichita, Sedgwick County,
Kansas.

OWNER:
SAVANNAH PLACE APARTMENTS, L.L.C.
A LIMITED LIABILITY COMPANY
BRYAN LAGALY, MEMBER
1218 HICKORY CREEK ST.
WICHITA, KANSAS 67235
(316) 253-6833

DWG FILE: 017569-R.C.
PROJECT NO. 00017569

SRB
924 NORTH MAIN
WICHITA, KANSAS 67203
http://www.feist.com/~srb

316-264-8008
FAX 264-4821
E-mail: srbo@feist.com

SAVOY, RUGGLES & BOHM, P. A.
ENGINEERING & SURVEYING

20 SEPT 00