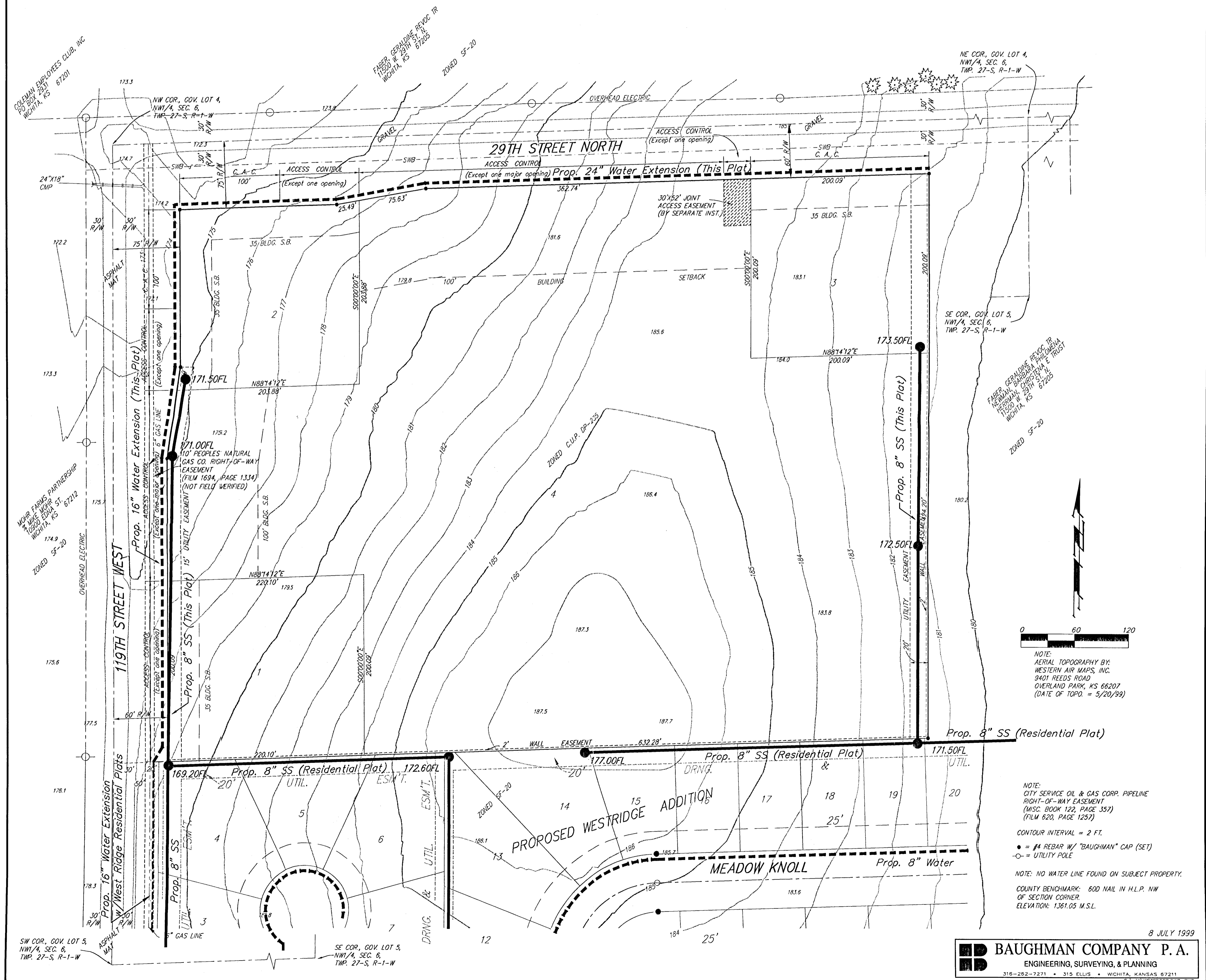


UTILITY PLAN
WESTRIDGE COMMERCIAL ADDITION
 WICHITA, SEDGWICK COUNTY, KANSAS



0 60 120
 NOTE:
 AERIAL TOPOGRAPHY BY:
 WESTERN AIR MAPS, INC.
 9401 REEDS ROAD
 OVERLAND PARK, KS 66207
 (DATE OF TOPO. = 5/20/99)

NOTE:
 CITY SERVICE OIL & GAS CORP. PIPELINE
 RIGHT-OF-WAY EASEMENT
 (MISC. BOOK 122, PAGE 357)
 (FILM 620, PAGE 1257)
 CONTOUR INTERVAL = 2 FT.
 ● = #4 REBAR W/ "BAUGHMAN" CAP (SET)
 ○ = UTILITY POLE
 NOTE: NO WATER LINE FOUND ON SUBJECT PROPERTY.
 COUNTY BENCHMARK: 600 NAIL IN H.L.P. NW
 OF SECTION CORNER.
 ELEVATION: 1361.05 M.S.L.

8 JULY 1999