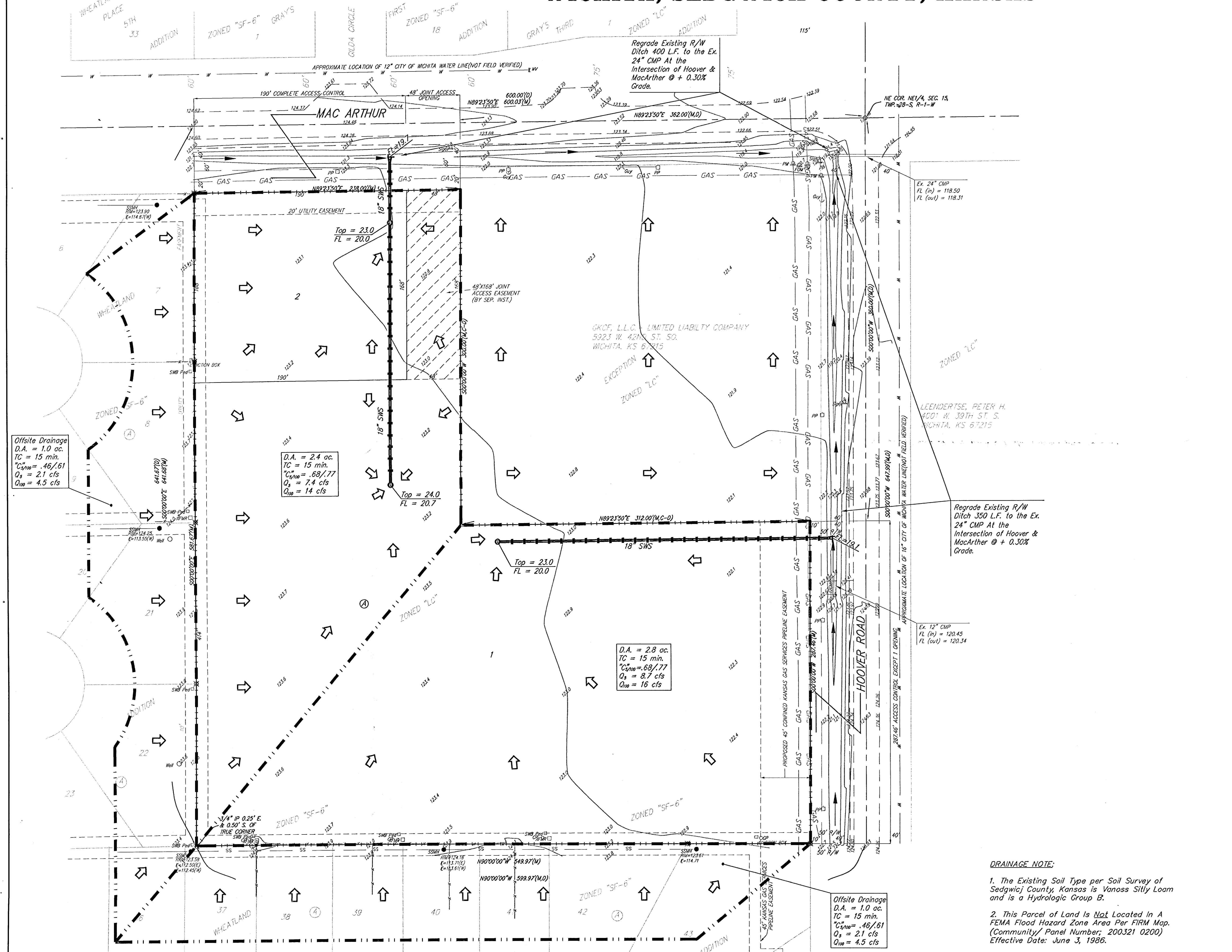


# DRAINAGE CONCEPT

## WHEATLAND COMMERCIAL ADDITION

### WICHITA, SEDGWICK COUNTY, KANSAS

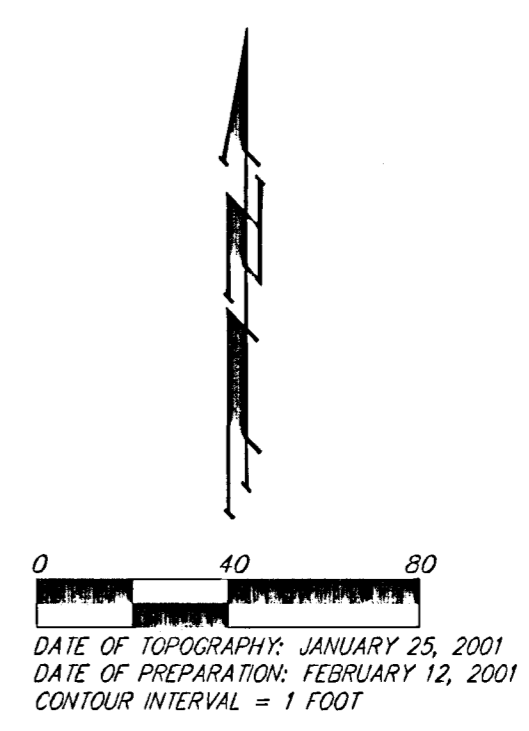


Offsite Drainage  
 D.A. = 1.0 ac.  
 TC = 15 min.  
 $C_{smp} = .46/.61$   
 $Q_s = 2.1$  cfs  
 $Q_{100} = 4.5$  cfs

D.A. = 2.4 ac.  
 TC = 15 min.  
 $C_{smp} = .68/.77$   
 $Q_s = 7.4$  cfs  
 $Q_{100} = 14$  cfs

D.A. = 2.8 ac.  
 TC = 15 min.  
 $C_{smp} = .68/.77$   
 $Q_s = 8.7$  cfs  
 $Q_{100} = 16$  cfs

Offsite Drainage  
 D.A. = 1.0 ac.  
 TC = 15 min.  
 $C_{smp} = .46/.61$   
 $Q_s = 2.1$  cfs  
 $Q_{100} = 4.5$  cfs



**OWNER:**  
 Gray Development, Inc.  
 204 N Woodchuck  
 Wichita, Kansas 67212  
 Phone 316-722-4778

**LEGAL DESCRIPTION:**  
 A tract situated in the NE 1/4 of Sec. 15, Twp. 28-S, R-1-W of the 6th P.M., Sedgwick County, Kansas: beginning at the NE corner of said Sec. 15; thence south along the east line of said NE 1/4, a distance of 647.99 feet; thence west at an included angle of 90°00'00", a distance of 599.97 feet; thence north parallel with the east line of said NE 1/4, a distance of 641.67 feet to a point in the north line of said NE 1/4; thence east 600.00 feet to the point of beginning, subject to road rights-of-way of record, EXCEPT that part of the NE 1/4 of Sec. 15, Twp. 28-S, R-1-W of the 6th P.M., Sedgwick County, Kansas described as follows: beginning at the NE corner of said NE 1/4; thence west along the north line of said NE 1/4, 362.00 feet; thence south parallel with the east line of said NE 1/4, 360.00 feet; thence east parallel with the north line of said NE 1/4, 362.00 feet to a point on the east line of said NE 1/4; thence north along the east line of said NE 1/4, 360.00 feet to the point of beginning.

**BENCHMARK:**  
 City disc 41.60' north and 69.00' east of centerline of Hoover and MacArthur.  
 Elev. = 121.22 City Datum

- # = #1 REBAR W/ "BAUGHMAN" CAP (FOUND)
- = #4 REBAR W/ "BAUGHMAN" CAP (SET)
- ⊗ = 3/4" IRON PIPE (FOUND)
- = 1/2" IRON PIPE IN THIMBLE (FOUND)
- (M) = MEASURED
- (D) = DESCRIBED
- (P) = PLATTED
- (C-D) = CALCULATED PER DESCRIPTION
- OP ○ = Cable TV Pedestal
- GAJ = Guy Anchor
- PM Δ = Pigtail Marker
- FOAD Δ = SWB Fiber Optics Marker
- PP □ = Power Pole
- Sign □ = Sign
- SSMH ● = Sanitary Sewer Manhole
- SWB Ped □ = Southwestern Bell Pedestal
- WV ○ = Cased Well
- TRF □ = Transformer
- WV □ = Water Valve

**DRAINAGE NOTE:**

- The Existing Soil Type per Soil Survey of Sedgwick County, Kansas is Vanoss Silty Loam and is a Hydrologic Group B.
- This Parcel of Land is Not Located In A FEMA Flood Hazard Zone Area Per FIRM Map. (Community/ Panel Number; 200321 0200) Effective Date: June 3, 1986.

