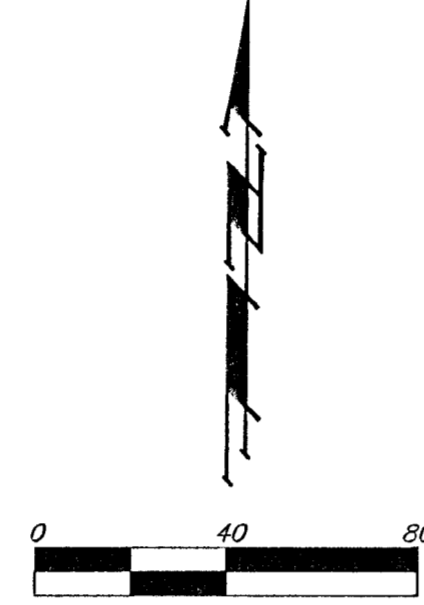
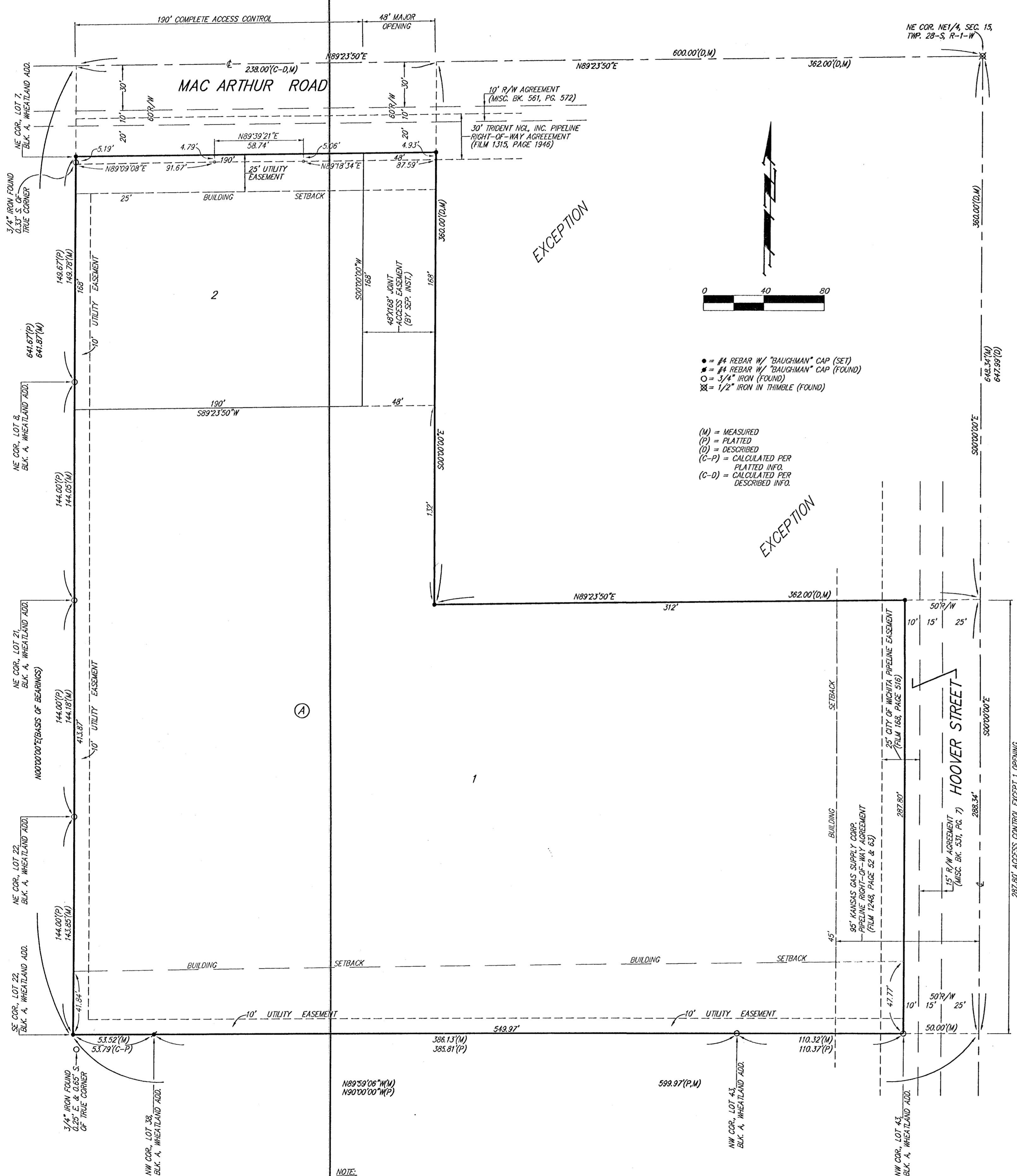


WHEATLAND COMMERCIAL ADDITION

WICHITA, SEDGWICK COUNTY, KANSAS



- = #4 REBAR W/ "BAUGHMAN" CAP (SET)
 - = #4 REBAR W/ "BAUGHMAN" CAP (FOUND)
 - = 1/4" IRON (FOUND)
 - ⊗ = 1/2" IRON IN THIMBLE (FOUND)
- (M) = MEASURED
 (P) = PLATTED
 (D) = DESCRIBED
 (C-P) = CALCULATED PER PLATTED INFO.
 (C-D) = CALCULATED PER DESCRIBED INFO.

State of Kansas) SS
 Sedgwick County) We, Baughman Company, P.A., Surveyors in aforesaid county and state do hereby certify that we have surveyed and platted "WHEATLAND COMMERCIAL ADDITION", Wichita, Sedgwick County, Kansas and that the accompanying plat is a true and correct exhibit of the property surveyed, described as follows: A tract of land situated in the NE 1/4 of Sec. 15, Twp. 28-S, R-1-W of the 6th P.M., Sedgwick County, Kansas, more particularly described as beginning at the NE corner of said Sec. 15; thence south along the east line of said NE 1/4, a distance of 647.99 feet; thence west at an included angle of 90°00'00", a distance of 599.97 feet; thence north parallel with the east line of said NE 1/4, a distance of 641.67 feet to a point in the north line of said NE 1/4; thence east, 600.00 feet to the point of beginning, subject to road rights-of-way of record, EXCEPT that part of the NE 1/4 of Sec. 15, Twp. 28-S, R-1-W of the 6th P.M., Sedgwick County, Kansas described as follows: Beginning at the NE corner of said NE 1/4; thence west along the north line of said NE 1/4, 362.00 feet; thence south parallel with the east line of said NE 1/4, 360.00 feet; thence east parallel with the north line of said NE 1/4, 362.00 feet to a point on the east line of said NE 1/4; thence north along the east line of said NE 1/4, 360.00 feet to the point of beginning.

Existing public easements and dedications being vacated by virtue of K.S.A. 12-512(b).
 Baughman Company, P.A.

Michael G. Conrey, Surveyor

Know all men by these presents that we, the undersigned, have caused the land in the surveyors certificate to be platted into Lots, a Block, and Streets, to be known as "WHEATLAND COMMERCIAL ADDITION", Wichita, Sedgwick County, Kansas. The utility easements are hereby granted as indicated for the construction and maintenance of all public utilities. The streets are hereby dedicated to and for the use of the public. All abutters rights of access shall be as depicted on the face of the plat and hereby granted to the City of Wichita, Kansas. The permitted opening locations shall be as determined by the City Engineer of the City of Wichita, Kansas.

Gray Development, Inc., a Kansas Corporation
 _____, President
 Billy J. Gray

HK Enterprises, L.L.C.
 _____, Member
 Diana K. Ketterman

_____ , Member
 Brad K. Herman

State of Kansas) SS
 Sedgwick County) The foregoing instrument acknowledged before me, this 2nd day of MAY, 2001, by Billy J. Gray, President of Gray Development, Inc., a Kansas Corporation, on behalf of the corporation.

My App't. Exp. 5/5/01
 _____, Notary Public
 PHILIP J. MEYER

State of Kansas) SS
 Sedgwick County) The foregoing instrument acknowledged before me, this 2nd day of MAY, 2001, by Diana K. Ketterman, Member, and Brad K. Herman, Member of HK Enterprises, L.L.C., on behalf of the limited liability company.

My App't. Exp. 1-19-04
 _____, Notary Public
 DENISE M. GRAY
 NOTARY PUBLIC
 STATE OF KANSAS
 My App't. Exp. 1-19-2004

This plat of "WHEATLAND COMMERCIAL ADDITION", Wichita, Sedgwick County, Kansas has been submitted to and approved by the Wichita-Sedgwick County Metropolitan Area Planning Commission, Wichita, Kansas.
 Dated this _____ day of _____, 2001.
 Wichita-Sedgwick County Metropolitan Area Planning Commission

_____, Acting Chair
 J. D. Michaelis

_____, Secretary
 Marvin S. Krout

This plat approved and all dedications shown hereon accepted by the City Council of the City of Wichita, Kansas, this _____ day of _____, 2001.

At the direction of the City Council
 _____, City Manager
 Chris Cherches

_____, City Clerk
 Pat Burnett

Reviewed in accordance with K.S.A. 58-2005 on this _____ day of _____, 2001.

_____,
 Tricia L. Robello, L.S. #1246
 Deputy County Surveyor
 Sedgwick County, Kansas

Entered on transfer record this _____ day of _____, 2001.

_____, County Clerk
 Don Brace

State of Kansas) SS
 Sedgwick County) This is to certify that this plat has been filed for record in the office of the Register of Deeds, this _____ day of _____, 2001 at _____ o'clock _____ M.; and is duly recorded.

_____, Register of Deeds
 Bill Meek

_____, Deputy
 Linda Kizzire

We the undersigned holders of a mortgage on the above described property, do hereby consent to this plat of "WHEATLAND COMMERCIAL ADDITION", Wichita, Sedgwick County, Kansas.

INTRUST Bank Haysville, N.A.
 _____, Gary L. Ubben
 _____, Sr. Vice Pres.
 GARY L. UBBEN

State of Kansas) SS
 Sedgwick County) The foregoing instrument acknowledged before me, this 2nd day of MAY, 2001, by GARY L. UBBEN, SENIOR VICE-PRESIDENT of INTRUST Bank Haysville, N.A., on behalf of the bank.

My App't. Exp. 7-1-01
 _____, Notary Public
 SANDRA G. ELKINS