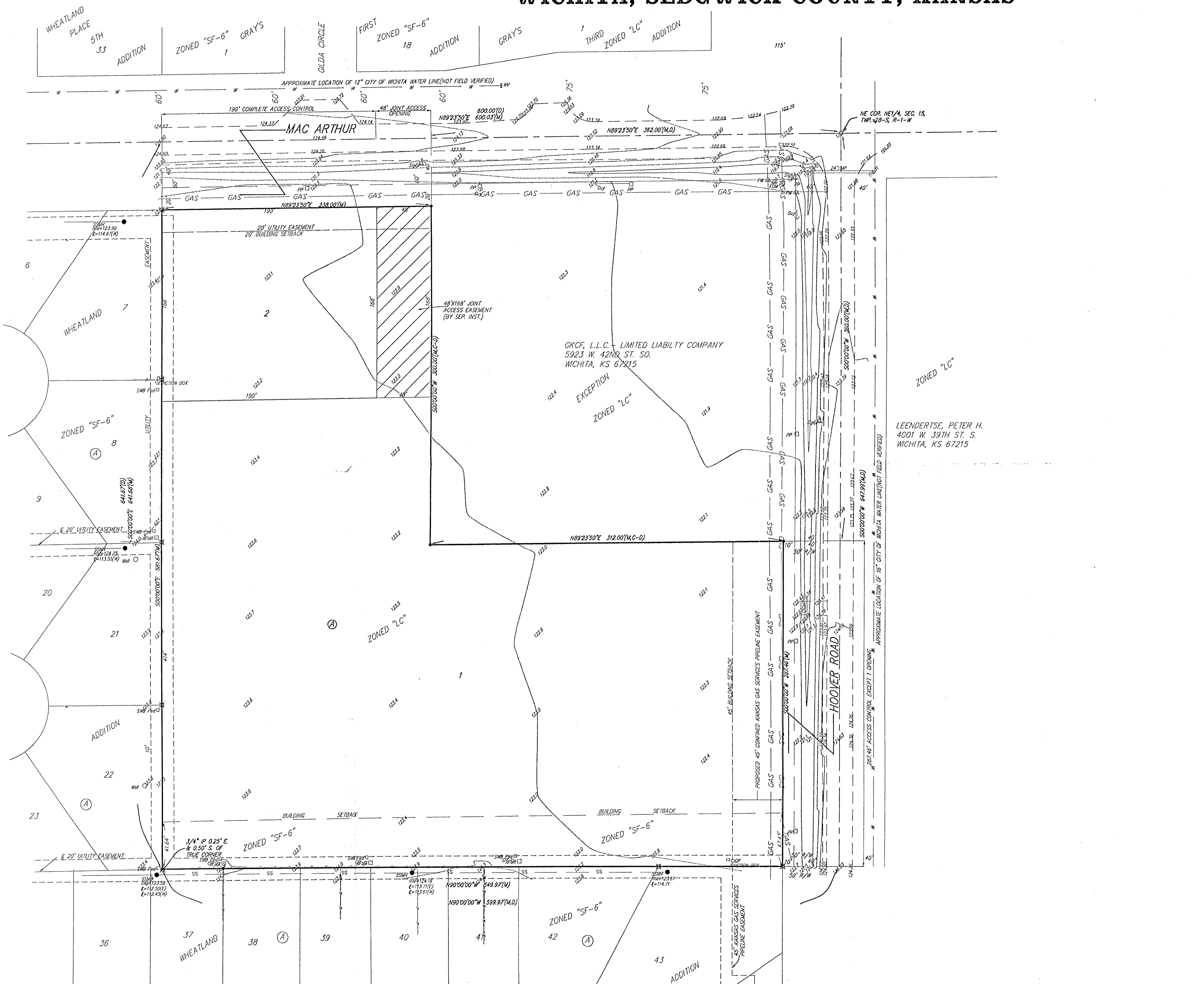


PRELIMINARY PLAT  
**WHEATLAND COMMERCIAL ADDITION**  
 WICHITA, SEDGWICK COUNTY, KANSAS



0 40 80  
 Feet

DATE OF TOPOGRAPHY: JANUARY 25, 2001  
 DATE OF PREPARATION: FEBRUARY 12, 2001  
 CONTOUR INTERVAL = 1 FOOT

**OWNER:**  
 Gray Development, Inc.  
 204 N Woodchuck  
 Wichita, Kansas 67212  
 Phone 316-722-4778

**LEGAL DESCRIPTION:**  
 A tract situated in the NE 1/4 of Sec. 15, Twp. 28-S, R-1-W of the 6th P.M., Sedgwick County, Kansas: beginning at the NE corner of said Sec. 15; thence south along the east line of said NE 1/4, a distance of 647.99 feet; thence west at an included angle of 90°00'00", a distance of 599.97 feet; thence north parallel with the east line of said NE 1/4, a distance of 641.67 feet to a point in the north line of said NE 1/4; thence east 600.00 feet to the point of beginning, subject to road rights-of-way of record, EXCEPT that part of the NE 1/4 of Sec. 15, Twp. 28-S, R-1-W of the 6th P.M., Sedgwick County, Kansas described as follows: beginning at the NE corner of said NE 1/4; thence west along the north line of said NE 1/4, 362.00 feet; thence south parallel with the east line of said NE 1/4, 360.00 feet; thence east parallel with the north line of said NE 1/4, 362.00 feet to a point on the east line of said NE 1/4; thence north along the east line of said NE 1/4, 360.00 feet to the point of beginning.

**BENCHMARK:**  
 City disc 41.60' north and 69.00 east of centerline of Hoover and MacArthur.  
 Elev. = 121.22 City Datum

- = #1 REBAR W/ "BAUGHMAN" CAP (FOUND)
- = #1 REBAR W/ "BAUGHMAN" CAP (SET)
- ⊗ = 3/4" IRON PIPE (FOUND)
- = 1/2" IRON PIPE IN THIMBLE (FOUND)
- (M) = MEASURED
- (D) = DESCRIBED
- (P) = PLATTED
- (C-D) = CALCULATED PER DESCRIPTION
- CP ○ = Curb T/I Pedestal
- GA = Guy Anchor
- PM SL = Pipeline Marker
- FOAM = Sub Fiber Optics Marker
- PP □ = Power Pole
- SPY = Sign
- SSM = Sanitary Sewer Manhole
- SWB Pipe = Southwestern Bell Pedestal
- W = Cased Well
- TRM □ = Transformer
- WV = Water Valve

