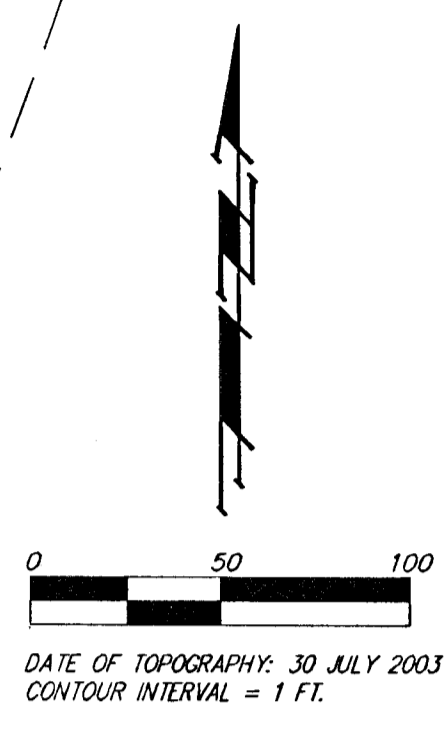
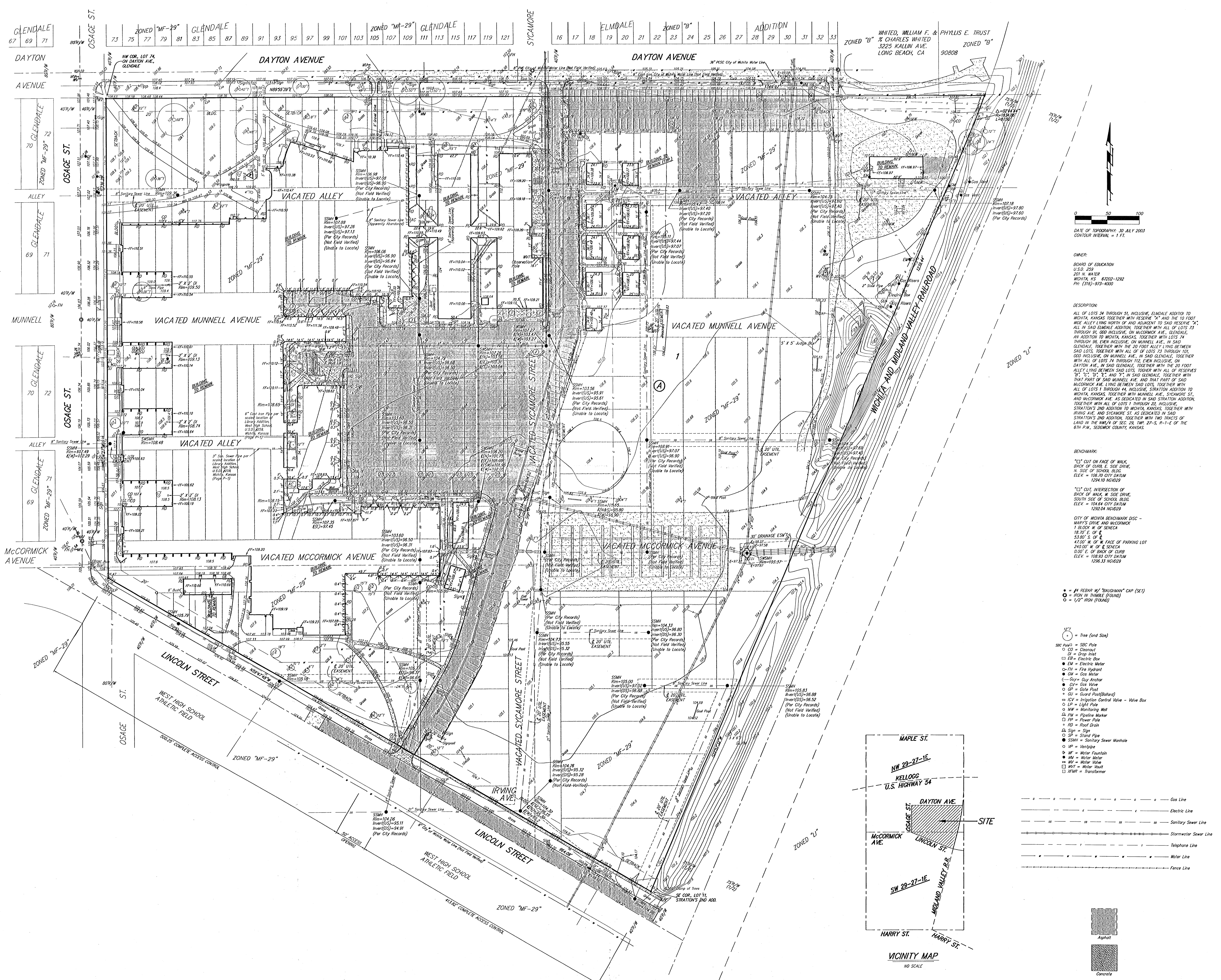


PRELIMINARY PLAT  
**WEST HIGH SCHOOL ADDITION**  
 WICHITA, SEDGWICK COUNTY, KANSAS



DATE OF TOPOGRAPHY: 30 JULY 2003  
 CONTOUR INTERVAL = 1 FT.

OWNER:  
 BOARD OF EDUCATION  
 U.S. 259  
 201 N. WATER  
 WICHITA, KS 67202-1292  
 PH: (316)-973-4000

DESCRIPTION:  
 ALL OF LOTS 54 THROUGH 51, INCLUSIVE, ELMDALE ADDITION TO WICHITA, KANSAS TOGETHER WITH RESERVE "A" AND THE 10 FOOT WIDE ALLEY LYING NORTH OF AND ADJACENT TO SAID RESERVE "A". ALL IN SAID ELMDALE ADDITION TOGETHER WITH ALL OF LOTS 73 THROUGH 91, 100 INCLUSIVE, ON MCCORMICK AVE., GLENDALE. AN ADDITION TO WICHITA, KANSAS, TOGETHER WITH LOTS 74 THROUGH 91, EVEN INCLUSIVE, ON MUNNELL AVE., IN SAID GLENDALE. TOGETHER WITH THE 20 FOOT ALLEY LYING BETWEEN SAID LOTS, TOGETHER WITH ALL OF LOTS 73 THROUGH 101, 100 INCLUSIVE, ON MUNNELL AVE., IN SAID GLENDALE. TOGETHER WITH ALL OF LOTS 74 THROUGH 112, EVEN INCLUSIVE, ON DAYTON AVE., IN SAID GLENDALE. TOGETHER WITH THE 20 FOOT ALLEY LYING BETWEEN SAID LOTS, TOGETHER WITH ALL OF RESERVES "B", "C", "D", "E", AND "F", IN SAID GLENDALE. TOGETHER WITH THAT PART OF SAID MUNNELL AVE. AND THAT PART OF SAID MCCORMICK AVE. LYING BETWEEN SAID LOTS, TOGETHER WITH ALL OF LOTS 1 THROUGH 14, INCLUSIVE, STRATTON ADDITION TO WICHITA, KANSAS, TOGETHER WITH MUNNELL AVE., SYCAMORE ST., AND MCCORMICK AVE. AS DEDICATED IN SAID STRATTON ADDITION, TOGETHER WITH ALL OF LOTS 1 THROUGH 22, INCLUSIVE, STRATTON'S ADDITION TO WICHITA, KANSAS, TOGETHER WITH IRVING AVE. AND SYCAMORE ST. AS DEDICATED IN SAID STRATTON'S ADDITION, TOGETHER WITH TWO TRACTS OF LAND IN THE NW/4 OF SEC. 29, TWP. 27-S., R-1-E. OF THE 6TH P.M., SEDGWICK COUNTY, KANSAS.

BENCHMARK:  
 "1" CUT ON FACE OF WALK, BACK OF CURB E. SIDE DRIVE, N. SIDE OF SCHOOL BLDG. ELEV. = 108.10 CITY DATUM 1294.10 NAD029  
 "2" CUT INTERSECTION OF BACK OF WALK, W. SIDE DRIVE, SOUTH SIDE OF SCHOOL BLDG. ELEV. = 104.84 CITY DATUM 1292.04 NAD029  
 CITY OF WICHITA BENCHMARK OSC - HARRY'S DRIVE AND MCCORMICK 1 BLOCK W. OF SENeca 18.70' E. OF E. 33.80' S. OF E. 47.00' W. OF W. FACE OF PARKING LOT 240.00' W. OF E. OF SENeca 100.0' E. OF BACK OF CURB ELEV. = 108.93 CITY DATUM 1296.33 NAD029

• = #4 REBAR W/ "DAUGHMAN" CAP (SET)  
 ○ = IRON IN THIMBLE (FOUND)  
 ○ = 1/2" IRON (FOUND)

- 1" = Tree (and Size)
- SBC Post = SBC Pole
- CD = Cleanout
- DI = Drop Inlet
- EB = Electric Box
- EM = Electric Meter
- PH = Fire Hydrant
- CM = Gas Meter
- DA = Day Anchor
- GP = Gate Post
- GU = Guard Post (Ballast)
- ICV = Irrigation Control Valve - Valve Box
- LP = Light Pole
- MW = Monitoring Well
- PM = Riprap Marker
- PP = Power Pole
- RD = Roof Drain
- Sign = Sign
- SP = Stand Pipe
- SSM = Sanitary Sewer Manhole
- UP = Urnpost
- WF = Water Fountain
- WM = Water Meter
- WV = Water Valve
- WVH = Water Vault
- WMT = Transformer

