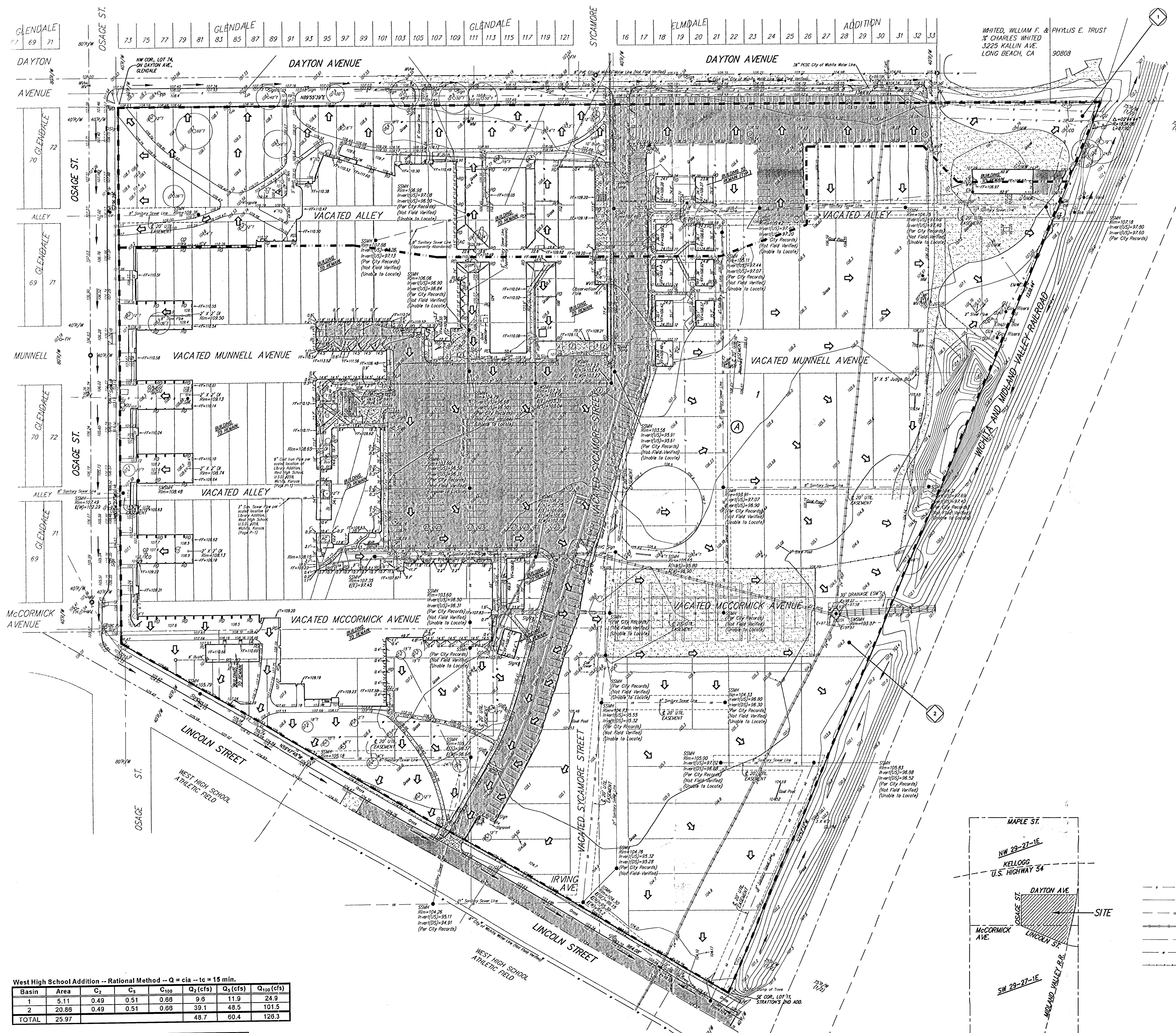


DRAINAGE PLAN

WEST HIGH SCHOOL ADDITION

WICHITA, SEDGWICK COUNTY, KANSAS



DATE OF TOPOGRAPHY: 30 JULY 2003
 CONTOUR INTERVAL = 1 FT.

OWNER:
 BOARD OF EDUCATION
 U.S. 255
 201 N. WATER
 WICHITA, KS 67202-1092
 PH: (316)-973-4000

DESCRIPTION:
 ALL OF LOTS 14 THROUGH 31, INCLUSIVE, ELMDALE ADDITION TO WICHITA, KANSAS TOGETHER WITH RESERVE "A" AND THE 10 FOOT WIDE ALLEY LING NORTH OF AND ADJACENT TO SAID RESERVE "A", ALL IN SAID ELMDALE ADDITION, TOGETHER WITH ALL OF LOTS 13 THROUGH 31, 100 INCLUSIVE, ON MCCORMICK AVE., GLENDALE, AN ADDITION TO WICHITA, KANSAS, TOGETHER WITH LOTS 24 THROUGH 38, EVEN INCLUSIVE, ON MUNNELL AVE., IN SAID GLENDALE, TOGETHER WITH THE 20 FOOT ALLEY LING BETWEEN SAID LOTS, TOGETHER WITH ALL OF LOTS 23 THROUGH 101, 100 INCLUSIVE, ON MANVELL AVE., IN SAID GLENDALE, TOGETHER WITH ALL OF LOTS 74 THROUGH 112, EVEN INCLUSIVE, ON DAYTON AVE., IN SAID GLENDALE, TOGETHER WITH THE 20 FOOT ALLEY LING BETWEEN SAID LOTS, TOGETHER WITH ALL OF PLOTS 24, 25, 26, 27, 28, 29, 30, AND 31, IN SAID GLENDALE, TOGETHER WITH THAT PART OF SAID MUNNELL AVE. AND THAT PART OF SAID MCCORMICK AVE. LYING BETWEEN SAID LOTS, TOGETHER WITH ALL OF LOTS 1 THROUGH 14, INCLUSIVE, STRATTON ADDITION TO WICHITA, KANSAS, TOGETHER WITH MUNNELL AVE., SYCAMORE ST., AND MCCORMICK AVE. AS DEDICATED IN SAID STRATTON ADDITION, TOGETHER WITH ALL OF LOTS 1 THROUGH 22, INCLUSIVE, STRATTON'S 2ND ADDITION TO WICHITA, KANSAS, TOGETHER WITH IRVING AVE. AND SYCAMORE ST. AS DEDICATED IN SAID STRATTON'S 2ND ADDITION, TOGETHER WITH TWO TRACTS OF LAND IN THE NW 1/4 OF SEC. 28, TWP. 27-S, R-1-E OF THE 6TH EM, SEDGWICK COUNTY, KANSAS.

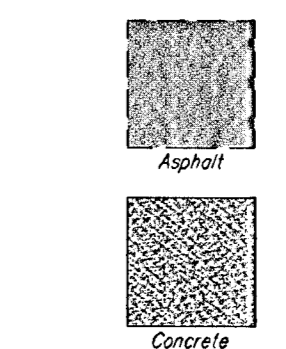
BENCHMARK:
 "1" CUT ON FACE OF WALK, BACK OF CURB, E. SIDE DRIVE, N. SIDE OF SCHOOL BLOC, ELEV = 108.70 CITY DATUM 1294.10 NOV029
 "13" CUT INTERSECTION OF BACK OF WALK, W. SIDE DRIVE, SOUTH SIDE OF SCHOOL BLOC, ELEV = 108.04 CITY DATUM 1292.04 NOV029

CITY OF WICHITA BENCHMARK DSC - MARY'S DRIVE AND MCCORMICK 1 BLOCK W. OF SENECA 18.70' E. OF E. 33.00' S. OF E. 43.00' W. OF W. FACE OF PARKING LOT 140.00' W. OF E. BENCH 0.00' E. OF BACK OF CURB ELEV = 108.81 CITY DATUM 1296.31 NOV029

• = #4 REBAR W/ "BAUGHMAN" CAP (SEI)
 ○ = IRON IN MANHOLE (FOUND)
 ○ = 1/2" IRON (FOUND)

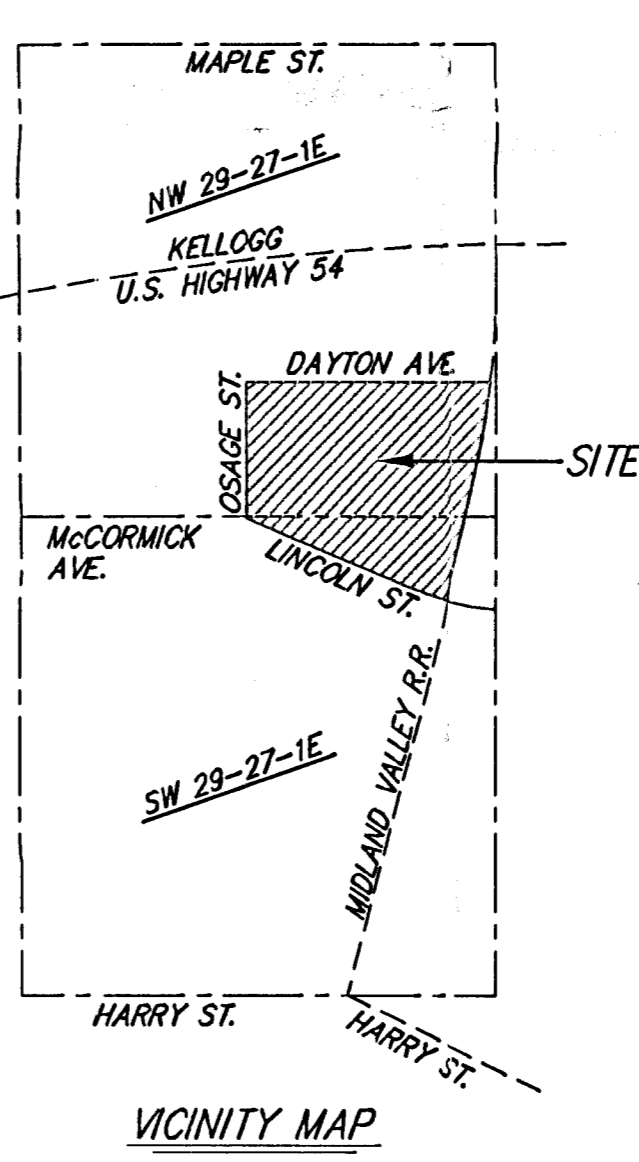
1" = Tree (and Size)
 SBC Pole = SBC Pole
 DD = Drain
 EB = Electric Box
 EM = Electric Meter
 FH = Fire Hydrant
 GM = Gas Meter
 GMA = Gas Meter Anchor
 GVA = Gas Valve
 GP = Gas Post
 GU = Guard Post (Barbed)
 ICV = Infiltration Control Valve - Valve Box
 LP = Light Pole
 MW = Manhole
 MWH = Manhole Vent
 PM = Pipe Marker
 PR = Power Pole
 RD = Roof Drain
 Sign = Sign
 SP = Stand Pipe
 SSM = Sanitary Sewer Manhole
 V = Vent Pipe
 WF = Water Fountain
 WM = Water Meter
 WH = Water Valve
 WHT = Water Vault
 WT = Transformer

--- Gas Line
 --- Electric Line
 --- Sanitary Sewer Line
 --- Stormwater Sewer Line
 --- Telephone Line
 --- Water Line
 --- Fence Line



West High School Addition -- Rational Method -- Q = cIa -- tc = 15 min.

Basin	Area	C ₁	C ₂	C ₁₀₀	Q ₂ (cfs)	Q ₃ (cfs)	Q ₁₀₀ (cfs)
1	5.11	0.49	0.51	0.88	9.8	11.9	24.9
2	20.88	0.49	0.51	0.88	39.1	48.5	101.5
TOTAL	25.97				48.7	60.4	126.3



LEGEND:

BASIN DELINEATION: - - - - -

BASIN I.D.: (circle with cross)

PROP. FLOW DIRECTION: →