

DRAINAGE PLAN

WESTPARK 2ND ADDITION

WICHITA, SEDGWICK COUNTY, KANSAS

NE COR. NE1/4, SEC. 35,
TWP. 27-S, R-1-W

Ex. Curb Inlet
Top = 109.45
18" RCP
FL. out = 101.36
(City Record)

D.A. = 0.88 ac.
Existing Conditions:
TC = 15 min.
"C" = .54
Q_s = 2.2 cfs
Q₁₀₀ = 3.5 cfs
Developed Conditions:
"C" = .65/.91
Q_s = 3.4 cfs
Q₁₀₀ = 5.9 cfs

↑

0 20 40

DATE OF PREPARATION: 12 MARCH 2001
DATE OF TOPOGRAPHY: 12 FEBRUARY 2001
CONTOUR INTERVAL = 1 FOOT

CONTRACT PURCHASER/DEVELOPER:
Dean DeWitt
DeWitt Land Company, Inc.
1854 S. Florence Court
Suite 10
Wichita, Kansas 67209
Phone 316-942-4687

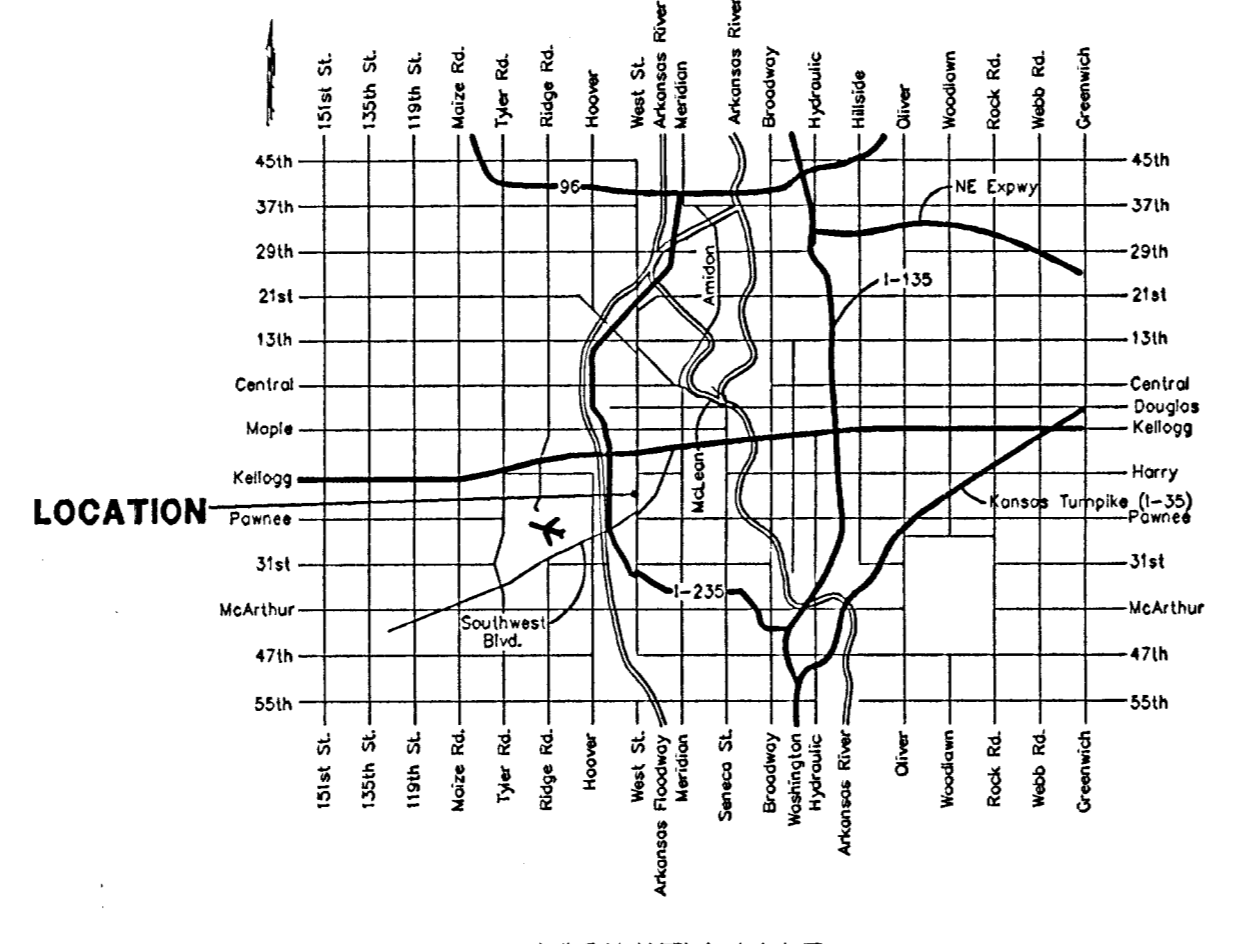
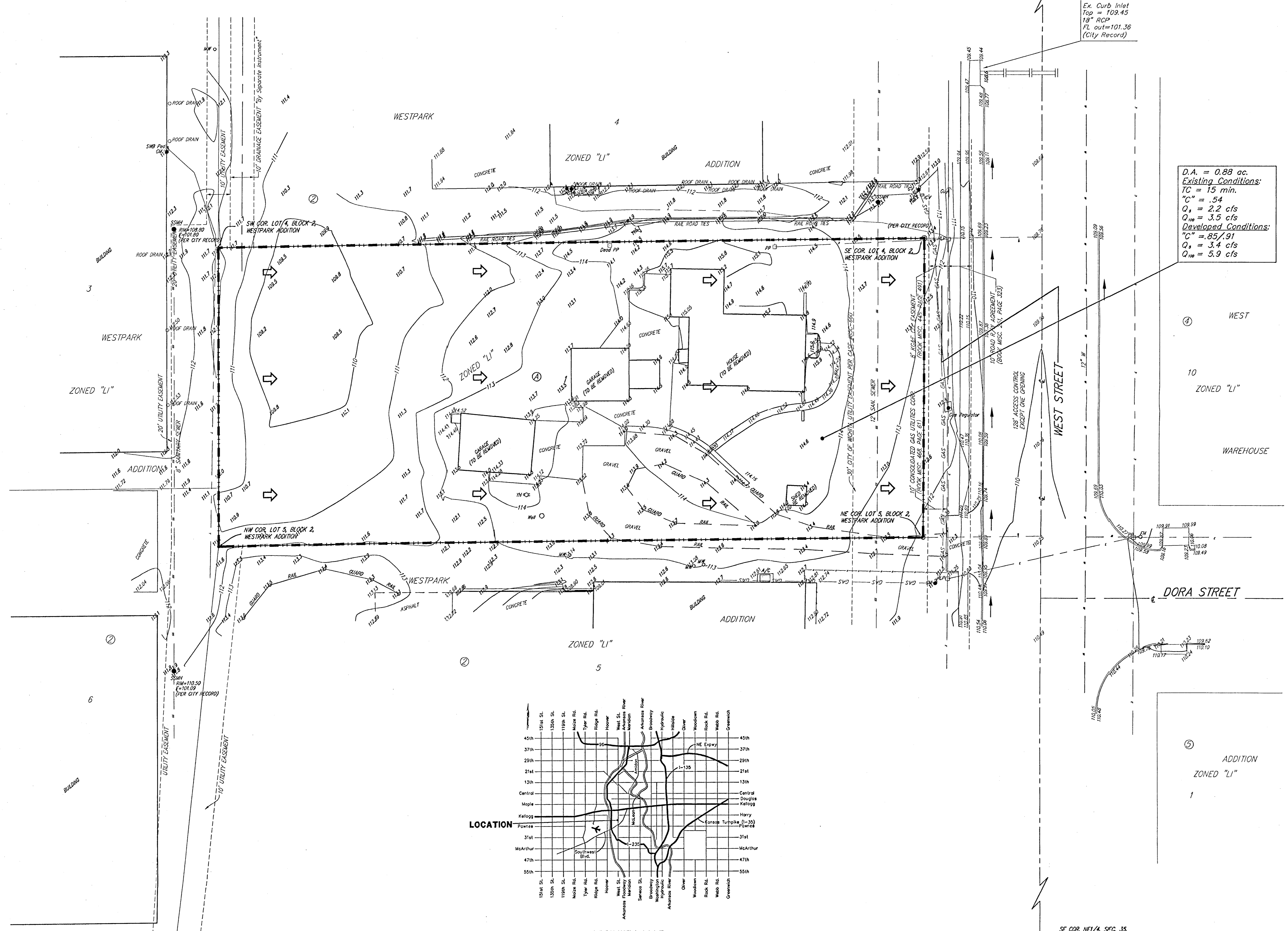
LEGAL DESCRIPTION:
A tract of land beginning 828 feet north of the SE corner of the NE1/4 of Sec. 35, Twp. 27-S, R-1-W of the 6th P.M., Sedgwick County, Kansas; thence north along the east line of said NE1/4, 128 feet; thence west parallel with the south line of said NE1/4, 350 feet; thence south 128 feet to beginning.

BENCHMARK:
City disc northwest corner of West St. and May, 2.2' north of north curb, 14.4' west of walk.
Elev. = 108.63 City Datum

- GM ● = Gas Meter
- GA ● = Guy Anchor
- GV ● = Gas Valve
- HLPC ● = High Line Pole
- PP □ = Power Pole
- SSMH ● = Sanitary Sewer Manhole
- MW ○ = Monitoring Well
- RV □ = Irrigation Control Valve - Valve Box
- HW ○ = Capped Well
- WM ● = Water Meter
- WV ● = Water Valve
- HY ● = Yard Hydrant (Spigot)

- WATER LINE
- SOUTH-WESTERN BELL
- GAS LINE
- CABLE TV
- FIBER
- TELEPHONE
- TELEPHONE
- SANITARY SEWER

- = #1 REBAR W/ "BAUGHMAN" CAP (SET)
- = 3/4" IRON (FOUND)
- = 1/2" IRON (FOUND)
- = 3/4" IRON IN THIMBLE (FOUND)
- (M) = MEASURED
- (D) = DESCRIBED
- (P) = PLATED
- (C) = CALCULATED
- (C-D) = CALCULATED PER DESCRIBED INFO.



REV. 25 APRIL 2001
09 APRIL 2001