

# DRAINAGE CONCEPT WESTPARK 2ND ADDITION WICHITA, SEDGWICK COUNTY, KANSAS

NE COR. NE1/4, SEC. 35  
TWP. 27-S, R-1-W

Ex. Curb Inlet  
Top = 109.45  
18" RCP  
FL out=101.36  
(City Record)

Offsite Drainage  
D.A. = 1.4 ac.  
TC = 15 min.  
"C" = .75  
Q<sub>s</sub> = 4.8 cfs  
Q<sub>10</sub> = 7.7 cfs

D.A. = 0.88 ac.  
Existing Conditions:  
TC = 15 min.  
"C" = .54  
Q<sub>s</sub> = 2.2 cfs  
Q<sub>10</sub> = 3.5 cfs  
Developed Conditions:  
"C" = .85/.91  
Q<sub>s</sub> = 3.4 cfs  
Q<sub>10</sub> = 5.9 cfs

DATE OF PREPARATION: 12 MARCH 2001  
DATE OF TOPOGRAPHY: 12 FEBRUARY 2001  
CONTOUR INTERVAL = 1 FOOT

**CONTRACT PURCHASER/DEVELOPER:**  
Dean DeWitt  
DeWitt Land Company, Inc.  
1854 S. Florence Court  
Suite 10  
Wichita, Kansas 67209  
Phone 316-942-4687

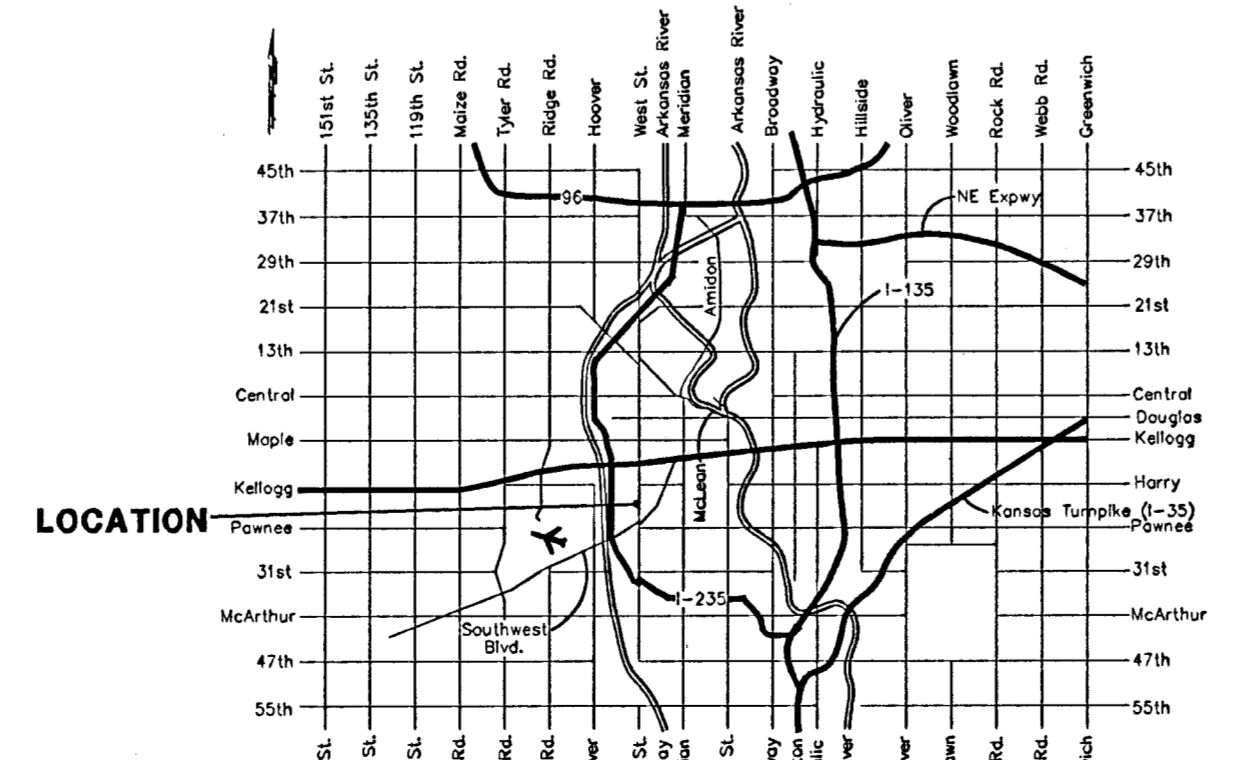
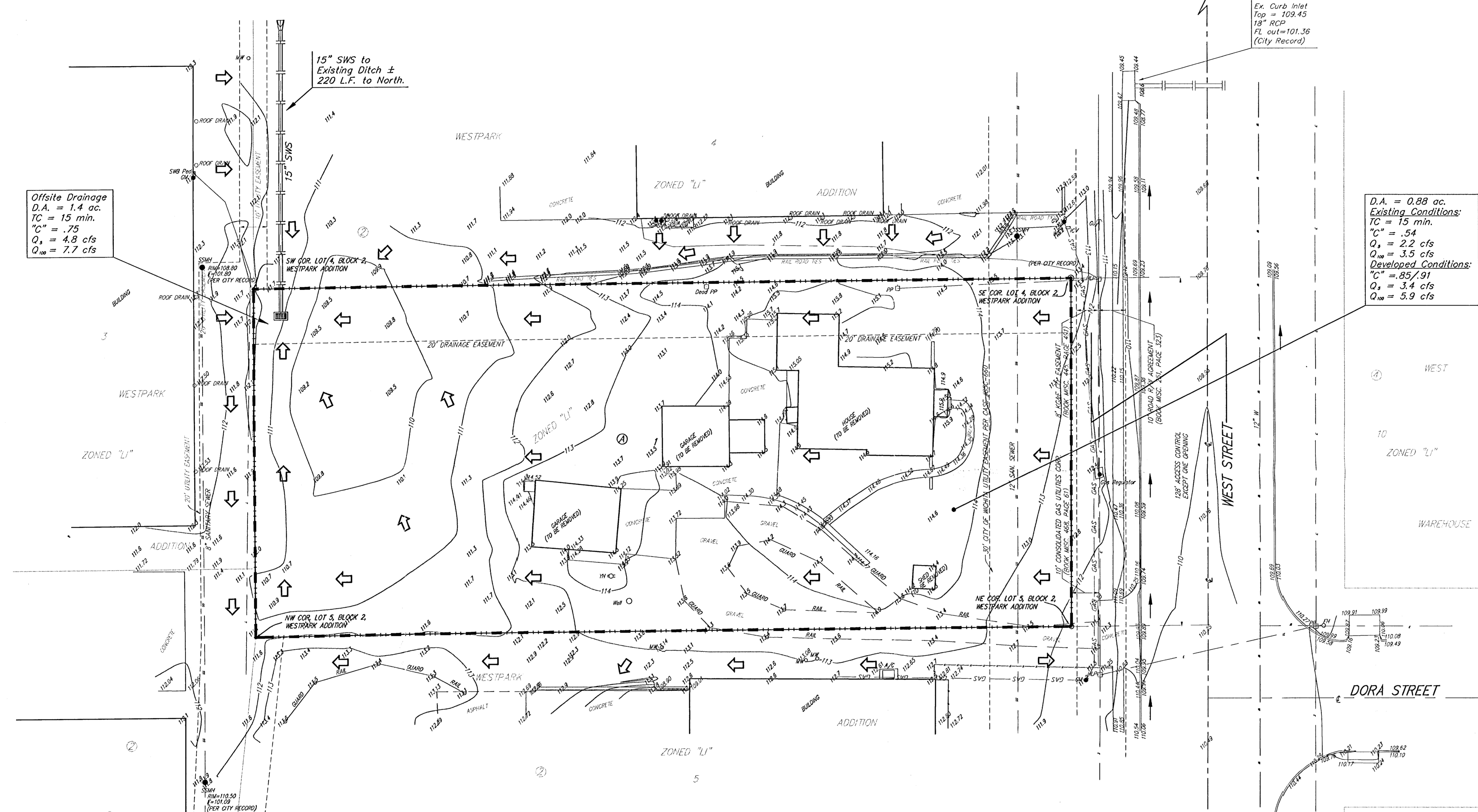
**LEGAL DESCRIPTION:**  
A tract of land beginning 828 feet north of the SE corner of the NE1/4 of Sec. 35, Twp. 27-S, R-1-W of the 6th P.M., Sedgwick County, Kansas; thence north along the east line of said NE1/4, 128 feet; thence west parallel with the south line of said NE1/4, 350 feet; thence south 128 feet to beginning.

**BENCHMARK:**  
City disc northwest corner of West St. and May 2.2' north of north curb, 14.4' west of walk.  
Elev.=108.63 City Datum

- GM ● = Gas Meter
- GA ● = Guy Anchor
- GV ● = Gas Valve
- HPLC □ = High Line Pole
- PP □ = Power Pole
- SSM ● = Sanitary Sewer Manhole
- MW ○ = Monitoring Well
- ICV □ = Irrigation Control Valve - Valve Box
- WC ○ = Cased Well
- WM ● = Water Meter
- WV ● = Water Valve
- HY ● = Yard Hydrant (Spigot)

- WATER LINE
- SOUTHWESTERN BELL CABLE
- CABLE TV
- PHONE
- ELECTRIC LINE
- SANITARY SEWER

- = #4 REBAR W/ "BAUGHMAN" CAP (SET)
- = 3/4" IRON (FOUND)
- = 1/2" IRON (FOUND)
- = 3/4" IRON IN THIMBLE (FOUND)
- (M) = MEASURED
- (D) = DESCRIBED
- (P) = PLATED
- (C) = CALCULATED
- (C-D) = CALCULATED PER DESCRIBED INFO.



VICINITY MAP