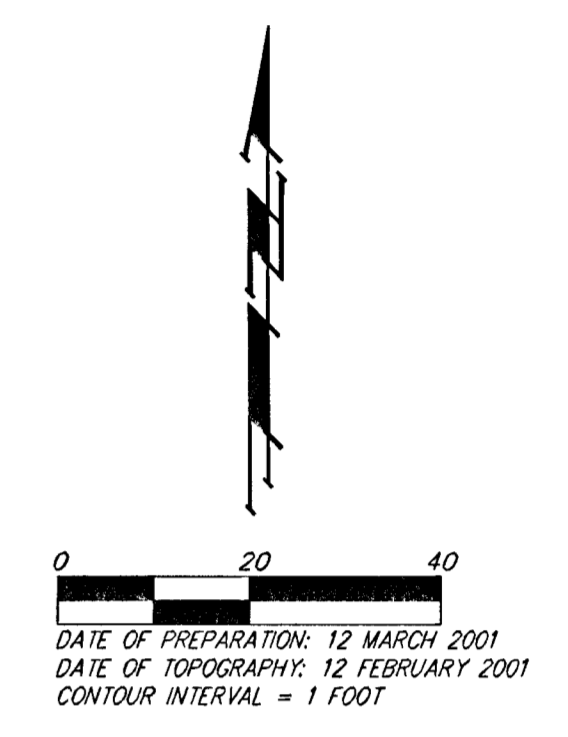
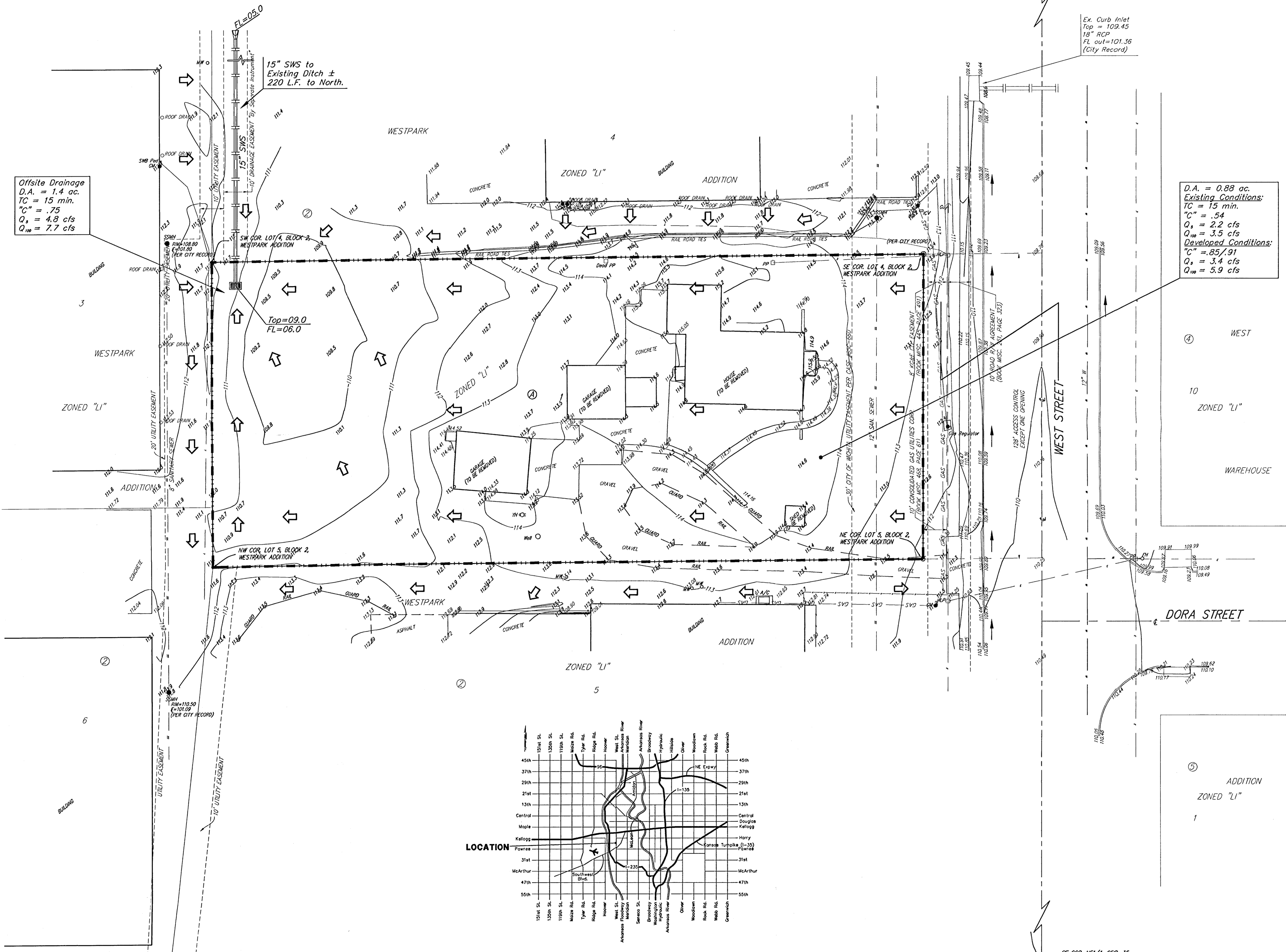


# DRAINAGE PLAN WESTPARK 2ND ADDITION WICHITA, SEDGWICK COUNTY, KANSAS

NE COR. NE 1/4, SEC. 35  
TWP. 27-S, R-1-W

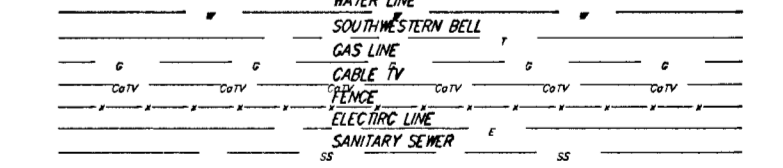


**CONTRACT PURCHASER/DEVELOPER:**  
Dean DeWitt  
DeWitt Land Company, Inc.  
1854 S. Florence Court  
Suite 10  
Wichita, Kansas 67209  
Phone 316-942-4687

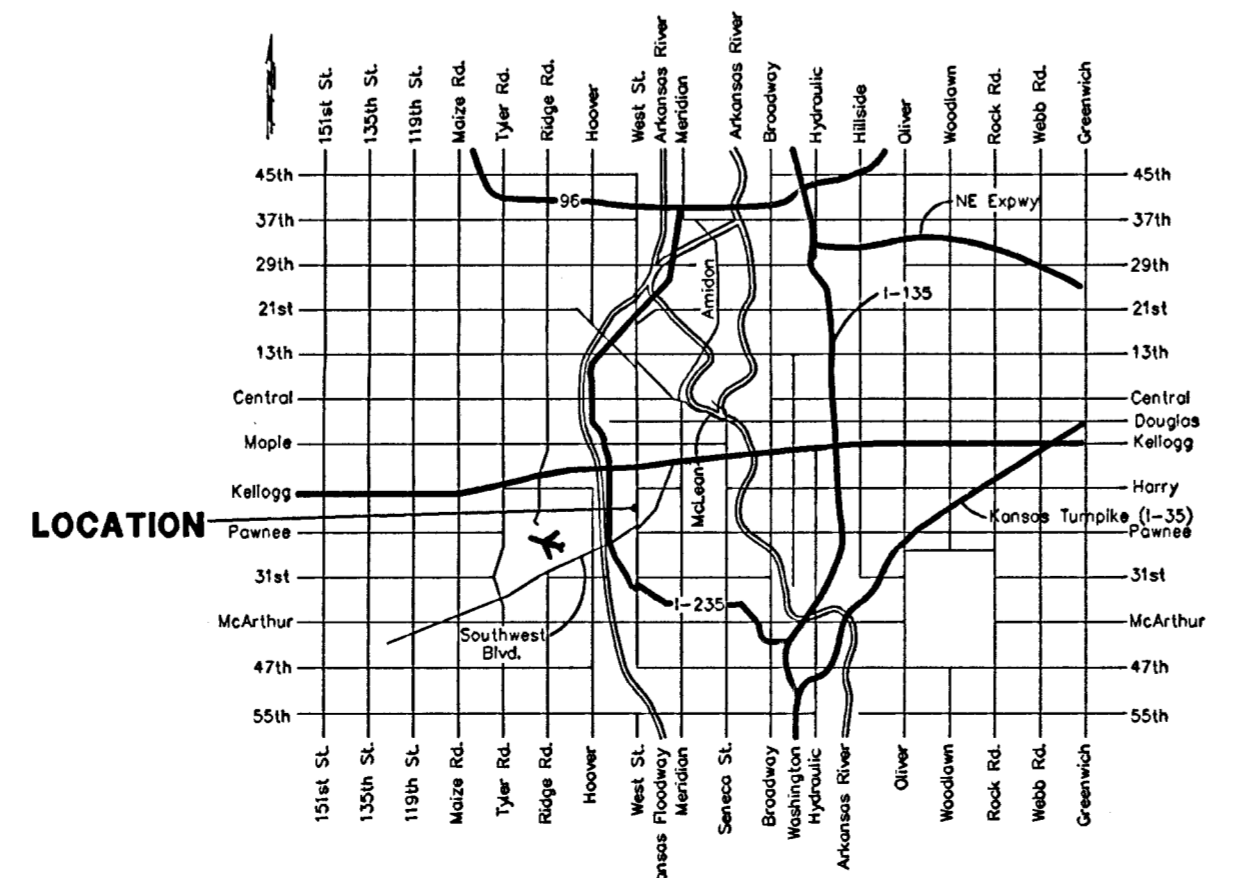
**LEGAL DESCRIPTION:**  
A tract of land beginning 828 feet north of the SE corner of the NE 1/4 of Sec. 35, Twp. 27-S, R-1-W of the 6th P.M., Sedgwick County, Kansas; thence north along the east line of said NE 1/4, 128 feet; thence west parallel with the south line of said NE 1/4, 350 feet; thence south 128 feet to beginning.

**BENCHMARK:**  
City disc northwest corner of West St. and May, 2.2' north of north curb, 14.4' west of walk.  
Elev = 108.63 City Datum

- GM = Gas Meter
- GA = Guy Anchor
- GV = Gas Valve
- HLP = High Line Pole
- PP = Power Pole
- SSM = Sanitary Sewer Manhole
- MW = Monitoring Well
- ICV = Irrigation Control Valve - Valve Box
- WV = Water Valve
- WV = Water Meter
- WV = Water Valve
- YH = Yard Hydrant (Spigot)



- = #4 REBAR W/ "BAUGHMAN" CAP (SE1)
- ⊙ = 3/4" IRON (FOUND)
- = 1/2" IRON (FOUND)
- = 3/4" IRON IN THIMBLE (FOUND)
- (M) = MEASURED
- (D) = DESCRIBED
- (P) = PLATTED
- (C) = CALCULATED
- (C-D) = CALCULATED PER DESCRIBED INFO.



VICINITY MAP

SE COR. NE 1/4, SEC. 35  
TWP. 27-S, R-1-W