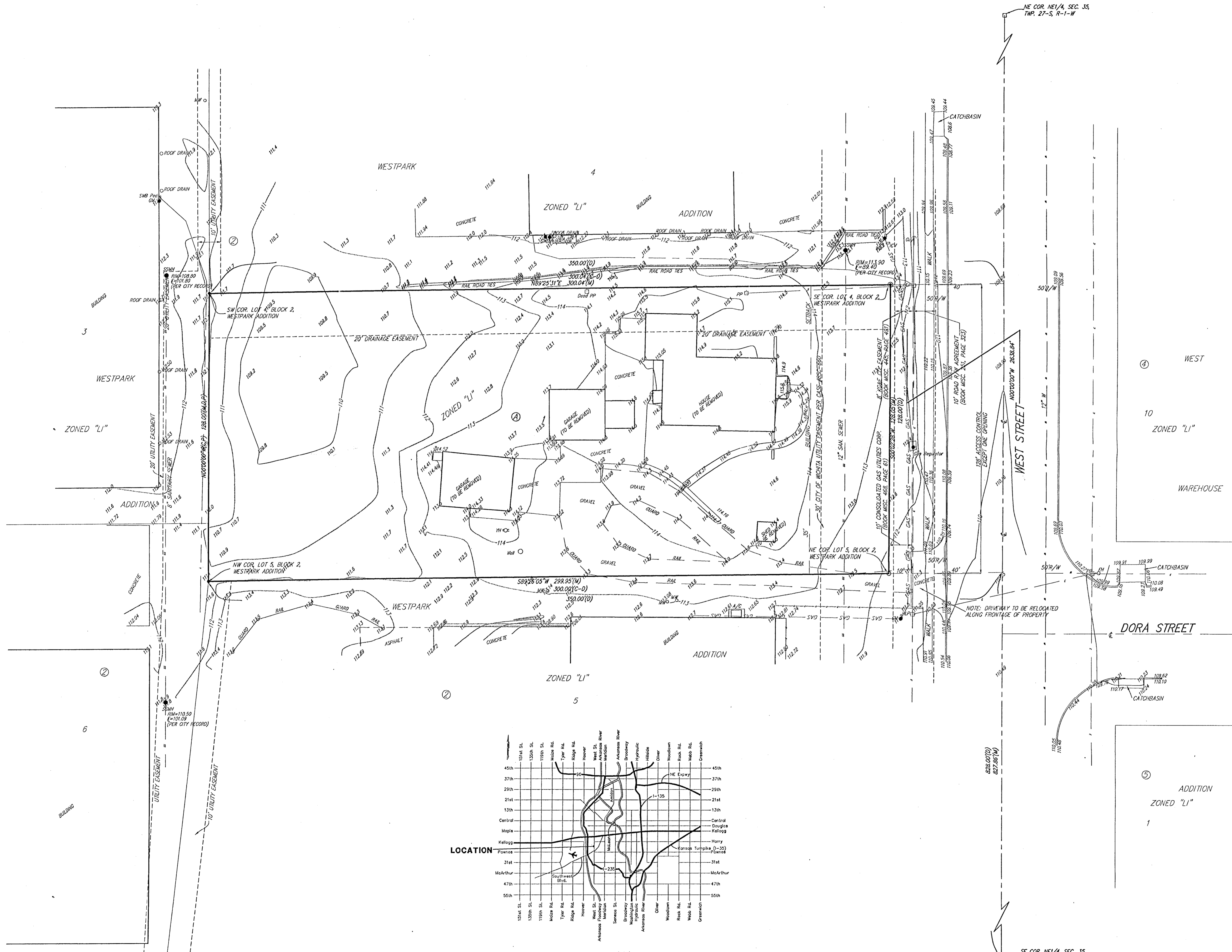


PRELIMINARY PLAT  
**WESTPARK 2ND ADDITION**  
 WICHITA, SEDGWICK COUNTY, KANSAS



NE COR. NE 1/4, SEC. 35,  
 TWP. 27-S, R-1-W

DATE OF PREPARATION: 12 MARCH 2001  
 DATE OF TOPOGRAPHY: 12 FEBRUARY 2001  
 CONTOUR INTERVAL = 1 FOOT

CONTRACT PURCHASER/DEVELOPER:  
 Dean DeWitt  
 DeWitt Land Company, Inc.  
 1854 S. Florence Court  
 Suite 10  
 Wichita, Kansas 67209  
 Phone 316-942-4687

LEGAL DESCRIPTION:  
 A tract of land beginning 828 feet north of the SE corner of the NE 1/4 of Sec. 35, Twp. 27-S, R-1-W of the 6th P.M., Sedgwick County, Kansas; thence north along the east line of said NE 1/4, 128 feet; thence west parallel with the south line of said NE 1/4, 350 feet; thence south 128 feet to beginning.

BENCHMARK:  
 City disc northwest corner of West St. and May, 2.2' north of north curb, 14.4' west of walk.  
 Elev.=108.63 City Datum

- GM = Gas Meter
  - CA = Cuy Anchor
  - GV = Gas Valve
  - HLP = High Line Pole
  - PP = Power Pole
  - SSM = Sanitary Sewer Manhole
  - MW = Monitoring Well
  - ICV = Irrigation Control Valve - Valve Box
  - W = Cased Well
  - MM = Motor Meter
  - MV = Meter Valve
  - YH = Yard Hydrant (Spigot)
- ④ = #4 REBAR W/ "BAUGHMAN" CAP (SET)  
 ○ = 3/4" IRON (FOUND)  
 ○ = 1/2" IRON IN THIMBLE (FOUND)  
 □ = 3/4" IRON IN THIMBLE (FOUND)  
 (M) = MEASURED  
 (D) = DESCRIBED  
 (P) = PLATED  
 (C) = CALCULATED  
 (C-D) = CALCULATED PER DESCRIBED INFO.

