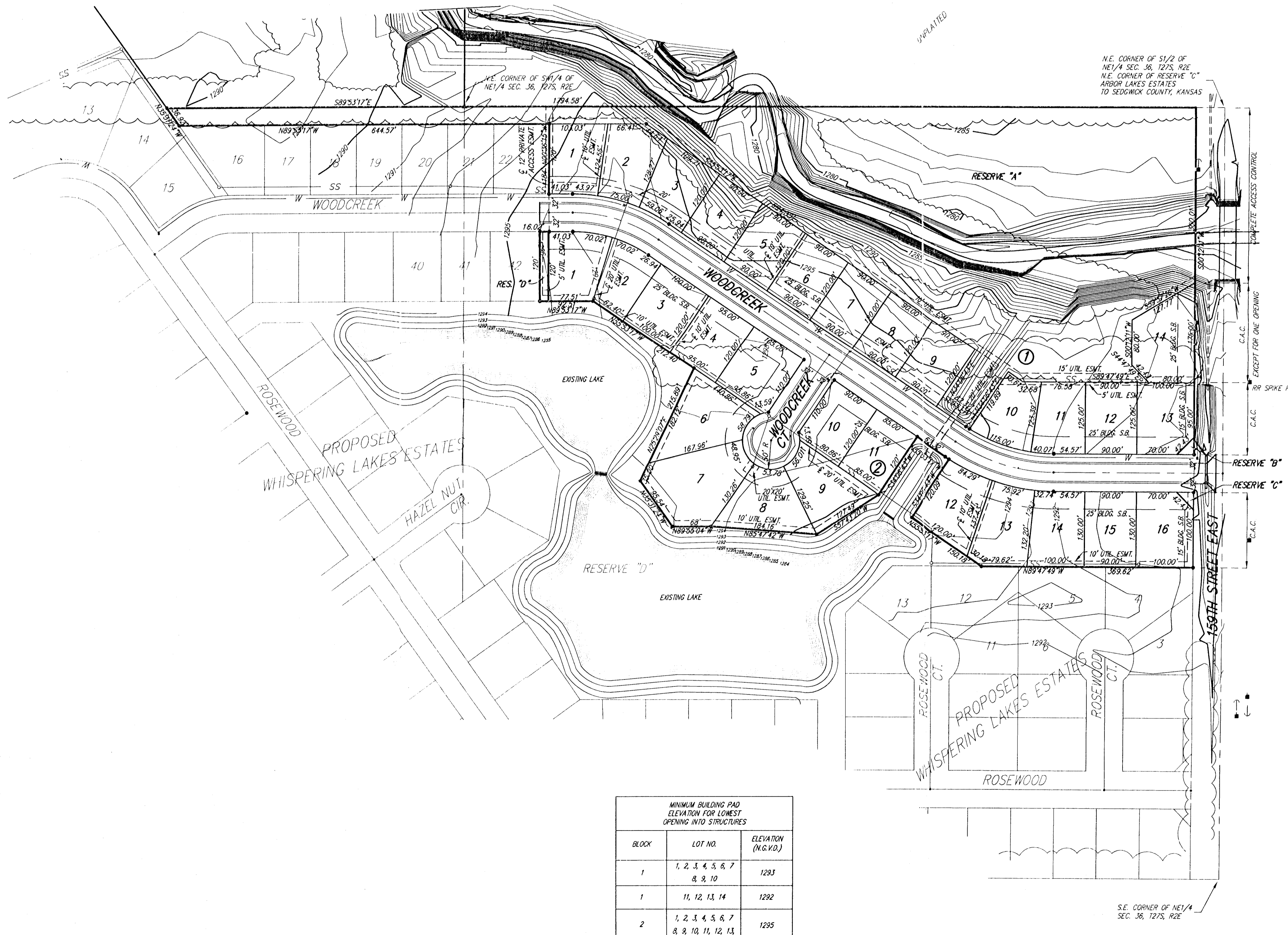


PRELIMINARY PLAT WHISPERING LAKES ESTATES SECOND ADDITION

SEDGWICK COUNTY, KANSAS



LEGAL DESCRIPTION:

Lots 13, 14, 15, 16, 17, 18, 19, 20, 21, 22, 23, 24, 25 and 26, Block 8, and Lots 3, 4, 5, 6, 7, 8, 9, 10, 11, 12, 13, 14, 15, 16, 17, 18 and 19, Block 9, and Reserve C, ARBOR LAKES ESTATES to Sedgwick County, Kansas.

OWNER:

ARTECH ENTERPRISES INC.
DAVID NEIDENS, VICE-PRESIDENT
520 S. HOLLAND
WICHITA, KANSAS 67209

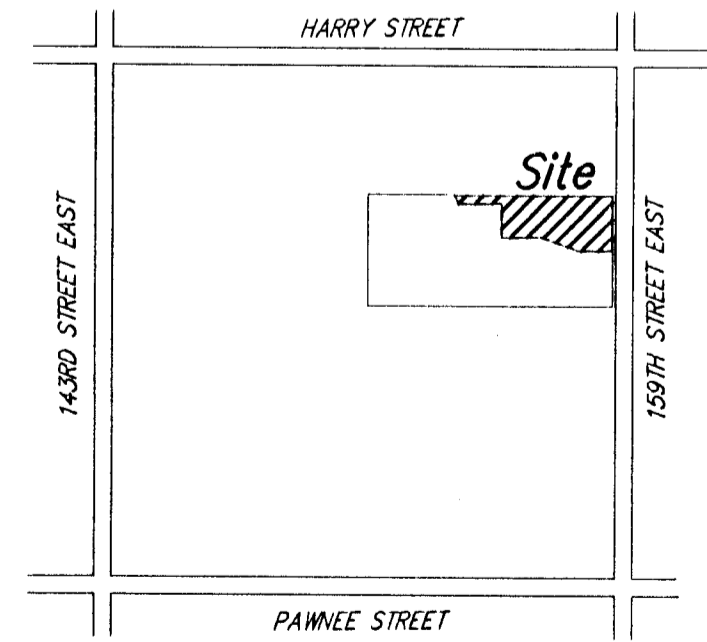
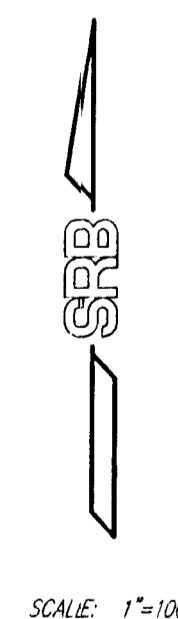
(316) 721-1575

NOTES:

BENCHMARK : RR SPIKE IN P.P. 47' EAST AND 85.3' NORTH OF THE S.E. COR. N.E. 1/4, SEC. 36-27S-2E Elev. 1287.62 (NGVD)

1. TOPOGRAPHY BY SAVOY, RUGGLES & BOHM, P.A. Elevation = (NGVD)
2. Reserves "A" shall permit entry features, signage, irrigation, walls, walks, lighting, landscaping, footbridges, drainage and drainage structures, berms, ponds/lakes, and utilities confined to easements.
3. Reserves "B", "C", & "D" shall permit entry features, signage, irrigation, walls and entry monuments, walks, lighting, landscaping berms, and utilities confined to easements.

MINIMUM BUILDING PAD ELEVATION FOR LOWEST OPENING INTO STRUCTURES		
BLOCK	LOT NO.	ELEVATION (M.G.V.D.)
1	1, 2, 3, 4, 5, 6, 7, 8, 9, 10	1283
1	11, 12, 13, 14	1292
2	1, 2, 3, 4, 5, 6, 7, 8, 9, 10, 11, 12, 13	1295



LOCATION MAP
NO SCALE