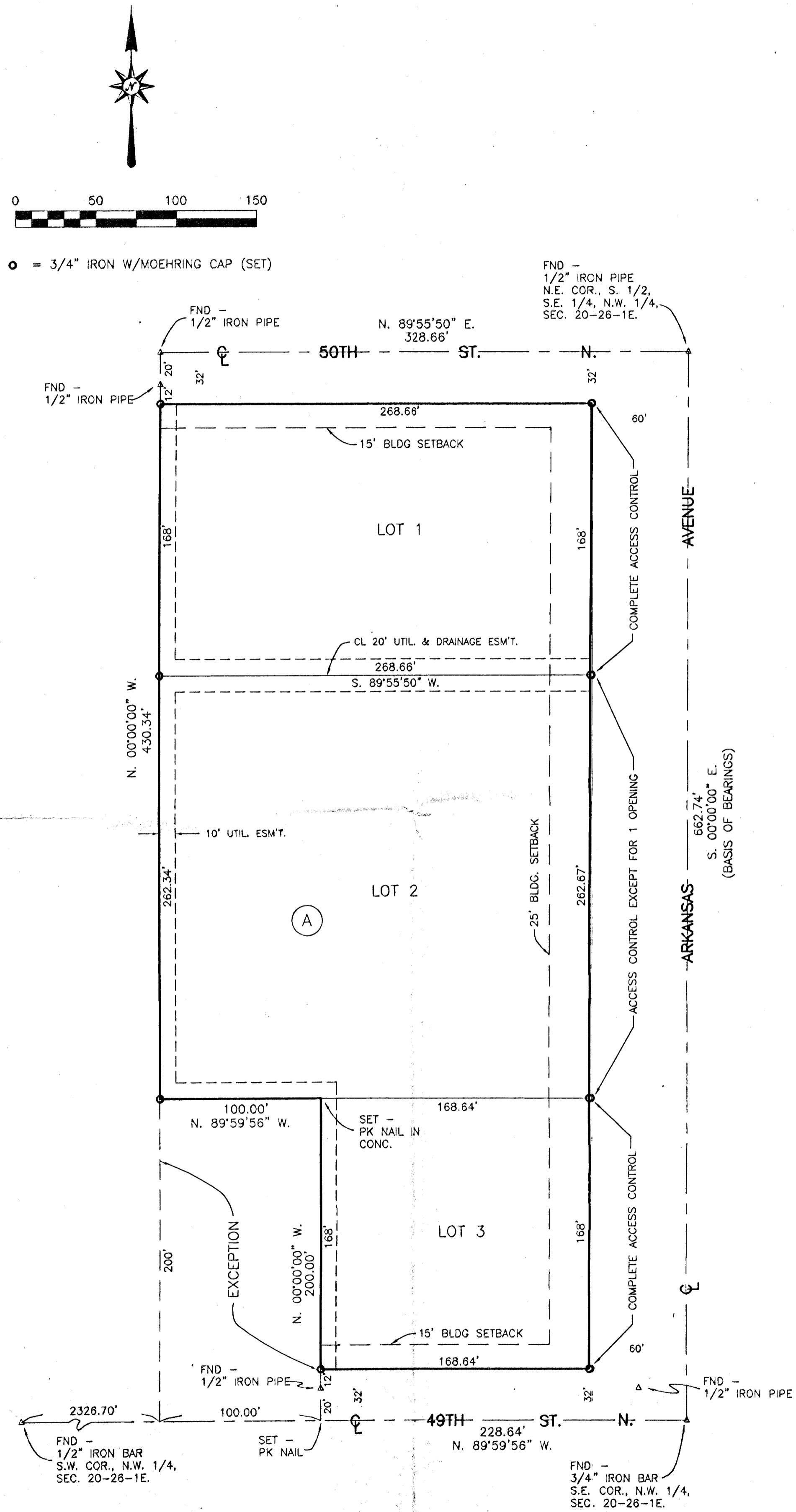


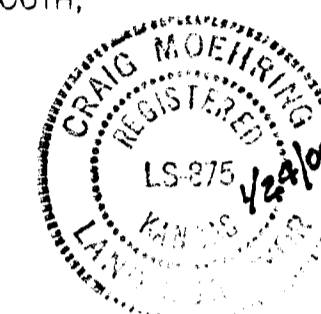
WILSON MEADOW ADDITION
An Addition to Wichita, Sedgwick County, Kansas



STATE OF KANSAS, COUNTY OF SEDGWICK, SS:

I, CRAIG MOEHRING, A REGISTERED LAND SURVEYOR IN SAID STATE AND COUNTY, DO HEREBY CERTIFY THAT I HAVE SURVEYED AND PLATTED "WILSON MEADOW ADDITION" AN ADDITION TO WICHITA, SEDGWICK COUNTY, KANSAS, INTO LOTS, A BLOCK, STREETS AND AN AVENUE, THE SAME BEING ACCURATELY SET FORTH ON THE ACCOMPANYING PLAT AND DESCRIBED AS THE EAST 5 ACRES, EXCEPT THE SOUTH 200 FEET OF THE WEST 100 FEET THEREOF, IN THE SOUTH HALF OF THE S.E. 1/4 OF THE N.W. 1/4 IN SECTION 20, TOWNSHIP 26 SOUTH, RANGE, 1 EAST OF THE 6TH P.M., SEDGWICK COUNTY, KANSAS.

Craig Moehring
CRAIG MOEHRING L.S. KANSAS #875
433 S. HYDRAULIC WICHITA, KANSAS 67211 PH. (316) 263-8291



KNOW ALL MEN BE THESE PRESENTS THAT WE THE UNDERSIGNED, OWNERS OF THE LAND AS ABOVE SET FORTH IN THE SURVEYOR'S CERTIFICATE, HAVE CAUSED THE SAME TO BE SURVEYED AND PLATTED INTO LOTS, A BLOCK, STREETS AND AN AVENUE, TO BE KNOWN AS "WILSON MEADOW ADDITION", AN ADDITION TO WICHITA, SEDGWICK COUNTY, KANSAS. THE STREETS ARE HEREBY DEDICATED TO AND FOR THE USE OF THE PUBLIC. EASEMENTS FOR THE CONSTRUCTION AND MAINTENANCE OF PUBLIC UTILITIES ARE HEREBY GRANTED. A DRAINAGE PLAN HAS BEEN DEVELOPED FOR THIS PLAT AND ALL DRAINAGE EASEMENTS, RIGHTS-OF-WAY, OR RESERVES SHALL REMAIN AT ESTABLISHED GRADES OR AS MODIFIED WITH THE APPROVAL OF THE APPLICABLE CITY OR COUNTY ENGINEER, AND UNOBSTRUCTED TO ALLOW FOR THE CONVEYANCE OF STORMWATER. ALL ADJUTER'S RIGHTS OF ACCESS TO AND FROM ARKANSAS AVENUE ARE HEREBY GRANTED TO THE APPROPRIATE GOVERNING BODY, PROVIDED HOWEVER, THAT LOT 2, BLOCK A, SHALL HAVE ACCESS TO ARKANSAS AVE. AT ONE LOCATION.

Mary M. Wilson
MARY M. WILSON

Deborah L. Cox
DEBORAH L. COX

Dennis L. Cox
DENNIS L. COX

STATE OF KANSAS, COUNTY OF SEDGWICK, SS:

BE IT REMEMBERED THAT ON THIS 14th DAY OF February, 2005, BEFORE ME, A NOTARY PUBLIC IN AND FOR SAID STATE AND COUNTY, CAME MARY M. WILSON, A SINGLE PERSON, TO ME PERSONALLY KNOWN TO BE THE SAME PERSON WHO EXECUTED THE FOREGOING INSTRUMENT OF WRITING. IN TESTIMONY WHEREOF, I HAVE HEREUNTO SET MY HAND AND AFFIXED MY NOTARIAL SEAL THE DAY AND YEAR ABOVE WRITTEN.

Johnetta Hatfield
JOHNETTA L. HATFIELD, NOTARY PUBLIC - STATE OF KANSAS
My Commission Expires 5-19-2008

STATE OF KANSAS, COUNTY OF JOHNSON, SS:

BE IT REMEMBERED THAT ON THIS 26 DAY OF January, 2005, BEFORE ME, A NOTARY PUBLIC IN AND FOR SAID STATE AND COUNTY, CAME DEBORAH L. COX AND DENNIS L. COX, HUSBAND AND WIFE, TO ME PERSONALLY KNOWN TO BE THE SAME PERSONS WHO EXECUTED THE FOREGOING INSTRUMENT OF WRITING. IN TESTIMONY WHEREOF, I HAVE HEREUNTO SET MY HAND AND AFFIXED MY NOTARIAL SEAL THE DAY AND YEAR ABOVE WRITTEN.

Donna J. Dark
DONNA J. DARK, NOTARY PUBLIC - STATE OF KANSAS
My Commission Expires 12-9-06

THIS PLAT OF "WILSON MEADOW ADDITION", AN ADDITION TO WICHITA, SEDGWICK COUNTY, KANSAS, HAS BEEN SUBMITTED TO AND APPROVED BY THE WICHITA-SEDGWICK COUNTY METROPOLITAN PLANNING COMMISSION.

DATED THIS _____ DAY OF _____, 2005.

WICHITA-SEDGWICK COUNTY METROPOLITAN AREA PLANNING COMMISSION

_____, CHAIR

_____, SECRETARY

THIS PLAT HAS BEEN APPROVED AND ALL DEDICATIONS SHOWN HEREON, IF ANY, ACCEPTED BY THE CITY OF WICHITA, KANSAS, THIS _____ DAY OF _____, 2005.

AT THE DIRECTION OF THE CITY COUNCIL

_____, MAYOR

_____, CITY CLERK

STATE OF KANSAS, COUNTY OF SEDGWICK, SS:

THIS IS TO CERTIFY THAT THIS INSTRUMENT WAS FILED FOR RECORD IN THE REGISTER OF DEEDS OFFICE AT _____ ON THE _____ DAY OF _____, 2005.

_____, REGISTER OF DEEDS

_____, DEPUTY

ENTERED ON TRANSFER RECORD THIS _____ DAY OF _____, 2005.

_____, COUNTY CLERK

Reviewed in accordance with _____ on this 14th day of February, 2005.

Tricia L. Robello
TRICIA L. ROBELLO, L.S. # 1246
Deputy County Surveyor
Sedgwick County, Kansas.

