

Preliminary Plat WINDRIDGE COURT

An Addition to Sedgwick County, Kansas

LEGAL DESCRIPTION
Beginning at the S.W. Corner of the NW/4 of the NW/4 of Section 15, T28S, R1W of the 6th P.M., Sedgwick County, Kansas; thence north along the west line of said NW/4, bearing N00°13'10"W, a distance of 528.00 feet; thence S88°35'E, 663.40 feet; thence S00°13'10"E, parallel with the west line of the NW/4, 656.83 feet; thence N88°35'W, 663.90 feet; thence N00°E, along the west line of the SW/4, 128.82 feet to the point of beginning.

OWNER:
Rulus Komp
4308 S. Ridge Road
Wichita, Kansas 67215
Ph. 522-1805

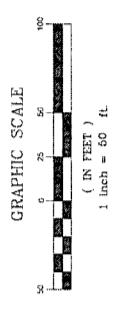
GROSS AREA:
4,555.99 Sq. Ft. ±
10.000 Acres ±

NET AREA:
3,555.71 Sq. Ft. ±
8.163 Acres ±

MINIMUM LOT SIZE:
26,509.30 Sq. Ft. ±
0.609 Acres ±

EXISTING ZONING: SF-20 - Single Family

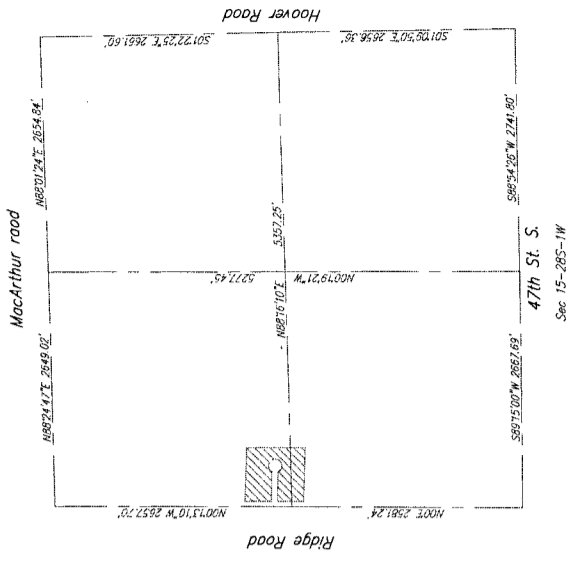
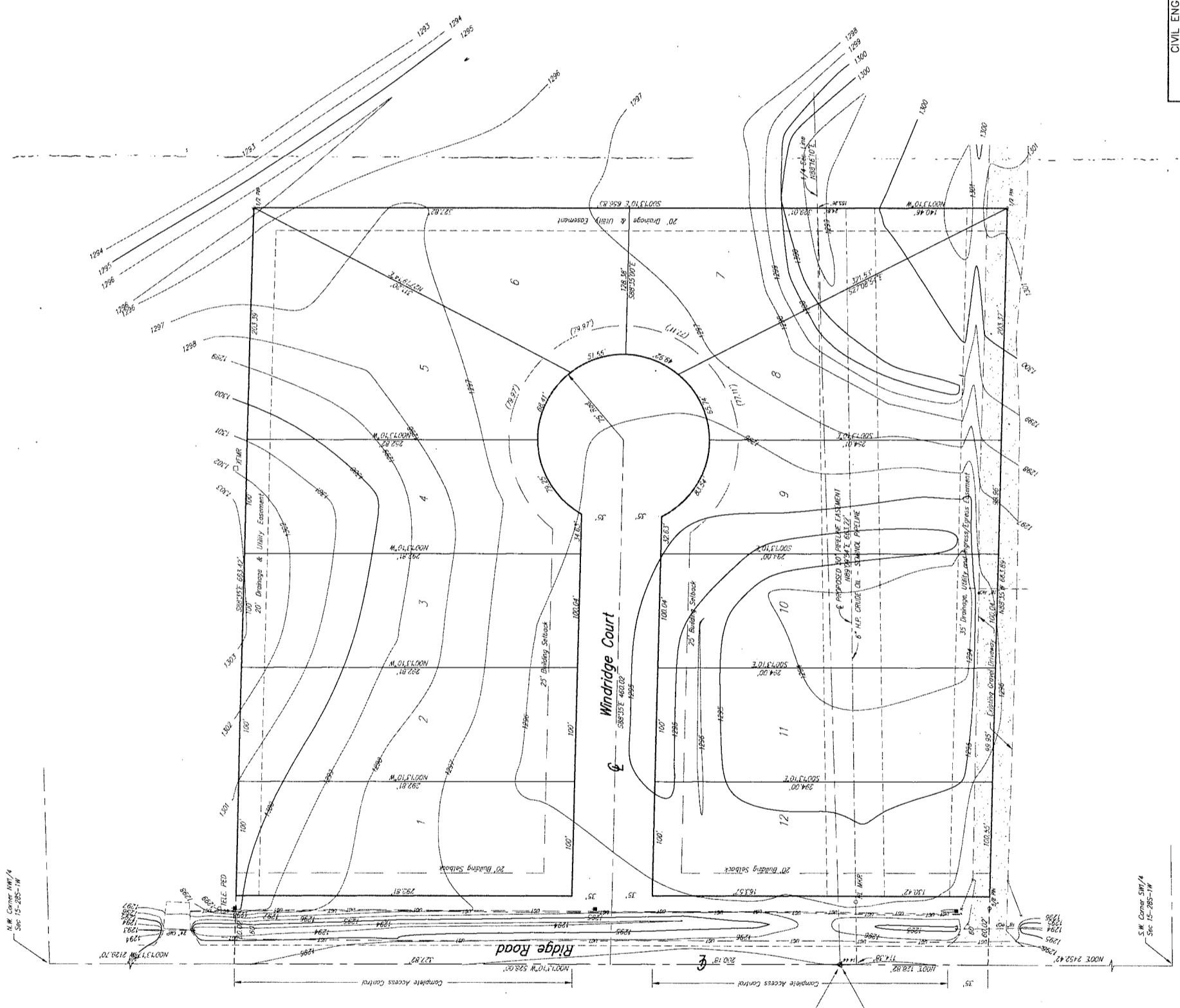
CONTROL NO. 489797



Elevations = H.G. ±
Survey Mark: 1/4" dia. Iron Pin
S.W. Corner NW/4, Sec. 15-28S-1W
Elevation = 1286.86 A.C.G.L. ±

A = 1/4 SECTION CORNER (FOUND)
o = 1/2" STEEL PIN (FOUND)

- LEGEND**
- = G.I.S. MAIN
 - = WATER MAIN
 - = STORM WATER SINK
 - = UNDER GROUND ELECTRIC
 - = UNDER GROUND TELEPHONE
 - = BENCH MARK
 - TELE. PED. TELEPHONE PEDESTAL
 - P.U. MARK PIPELINE MARKER
 - POWER POLE
 - ELECTRIC TRANSFORMER



CIVIL ENGINEERING SERVICES PROVIDED BY:

CERTIFIED ENGINEERING DESIGN, P.A.
810 WEST DOUGLAS, SUITE C
WICHITA, KANSAS 67203
PH: (316) 262-8808
FAX: (316) 262-1669

GED

SHEET	1
TOTAL	1

Savoy Company, P.A.
Land Surveyors
338 S. Simpson, Suite 104, Wichita, KS 67202
PH: (316) 265-0000
FAX: (316) 265-0079
www.savoy.com