

# WINDRIDGE COURT

An Addition to Sedgwick County, Kansas

State of Kansas) SS  
Sedgwick County)

We, Savoy Company, P.A., Surveyors in aforesaid county and state do hereby certify that, under the supervision of the undersigned, we have surveyed and platted "WINDRIDGE COURT", an Addition to Sedgwick County, Kansas and that the accompanying plat is a true and correct exhibit of the property surveyed, described as follows:

Beginning at the S.W. Corner of the W1/2 of the NW1/4 of Section 15, T28S, R1W of the 6th P.M., Sedgwick County, Kansas; thence north along the west line of said NW1/4, bearing N00°13'10"W, a distance of 528.00 feet; thence S88°35'E, 663.40 feet; thence S00°13'10"E, parallel with the west line of the NW1/4, 656.83 feet; thence N88°35'W, 663.90 feet; thence N00°E, along the west line of the SW1/4, 128.82 feet to the point of beginning.

All Public easements and dedications being vacated by virtue of K.S.A. 12-512(b).

Savoy Company, P.A.

Date: 10/18/05  
*Mark A. Savoy* Surveyor  
Mark A. Savoy RLS #788

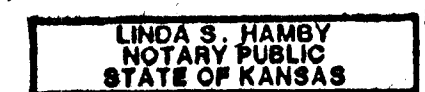
Know all men by these presents that we, the undersigned, have caused the land described in the surveys certificate to be platted into Lots, a Block and Streets to be known as "WINDRIDGE COURT" an Addition to Sedgwick County, Kansas. The Streets are hereby dedicated to and for the use of the public. The drainage and utility easements are hereby granted as indicated for the construction and maintenance of all public utilities and for drainage purposes. The drainage, utility and Ingress/Egress easement is hereby granted for the construction and maintenance of all public utilities, for drainage purposes and for Ingress/Egress purposes. A drainage plan has been developed for this plat and all drainage easements and rights-of-way shall remain at established grades or modified with the approval of the Engineer of the appropriate governing body, and unobstructed to allow for the conveyance of stormwater. Access controls are hereby granted to the appropriate governing body as indicated on the face of the plat. The contingent dedication is hereby contingently dedicated as street right-of-way to become effective upon the platting of any adjacent subdivision having a street adjacent thereto. The cost of constructing said street are to be borne by the person(s) or agency that owns said adjacent subdivision.

*Rufus J. Komp* Rufus J. Komp  
*Doris C. Komp* Doris C. Komp

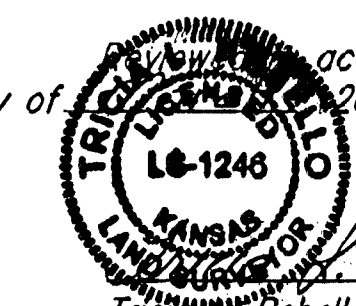
State of Kansas) SS  
Sedgwick County)

The foregoing instrument acknowledged before me, this 10th day of March, 2005, by Rufus J. Komp and Doris C. Komp, husband and wife.

My App't. Exp. 10/30/07  
*Linda S. Hamby* Notary Public



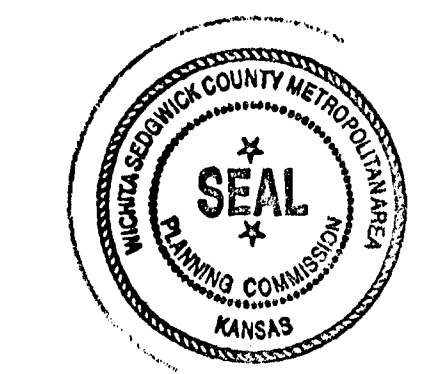
10th day of March, 2005, accordance with K.S.A. 58-2005 on this day of March, 2005.



*Linda S. Hamby* Deputy County Surveyor  
Linda S. Hamby, L.S. #1246  
Sedgwick County, Kansas

This plat of "WINDRIDGE COURT", an Addition to Sedgwick County, Kansas, has been submitted to and approved by the Wichita-Sedgwick County Metropolitan Area Planning Commission, Wichita, Kansas. Dated this 20th day of March, 2005.

Wichita-Sedgwick County Metropolitan Area Planning Commission



*Ronald Marnell* Chairman  
Ronald Marnell  
*John L. Schlegel* Secretary  
John L. Schlegel

This plat approved and all dedications shown hereon, are hereby accepted by the City Council of the City of Wichita, Kansas, dated this day of March, 2005.

Carlos Mayans Mayor  
Karen Schofield City Clerk

This plat approved and all dedications shown hereon, are hereby accepted by the Board of County Commissioners, Sedgwick County, Kansas, this day of March, 2005.

David M. Unruh Chairman  
Don Brace County Clerk

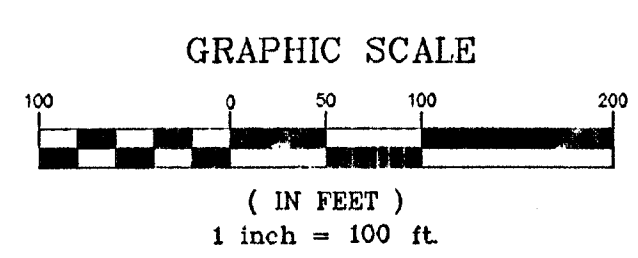
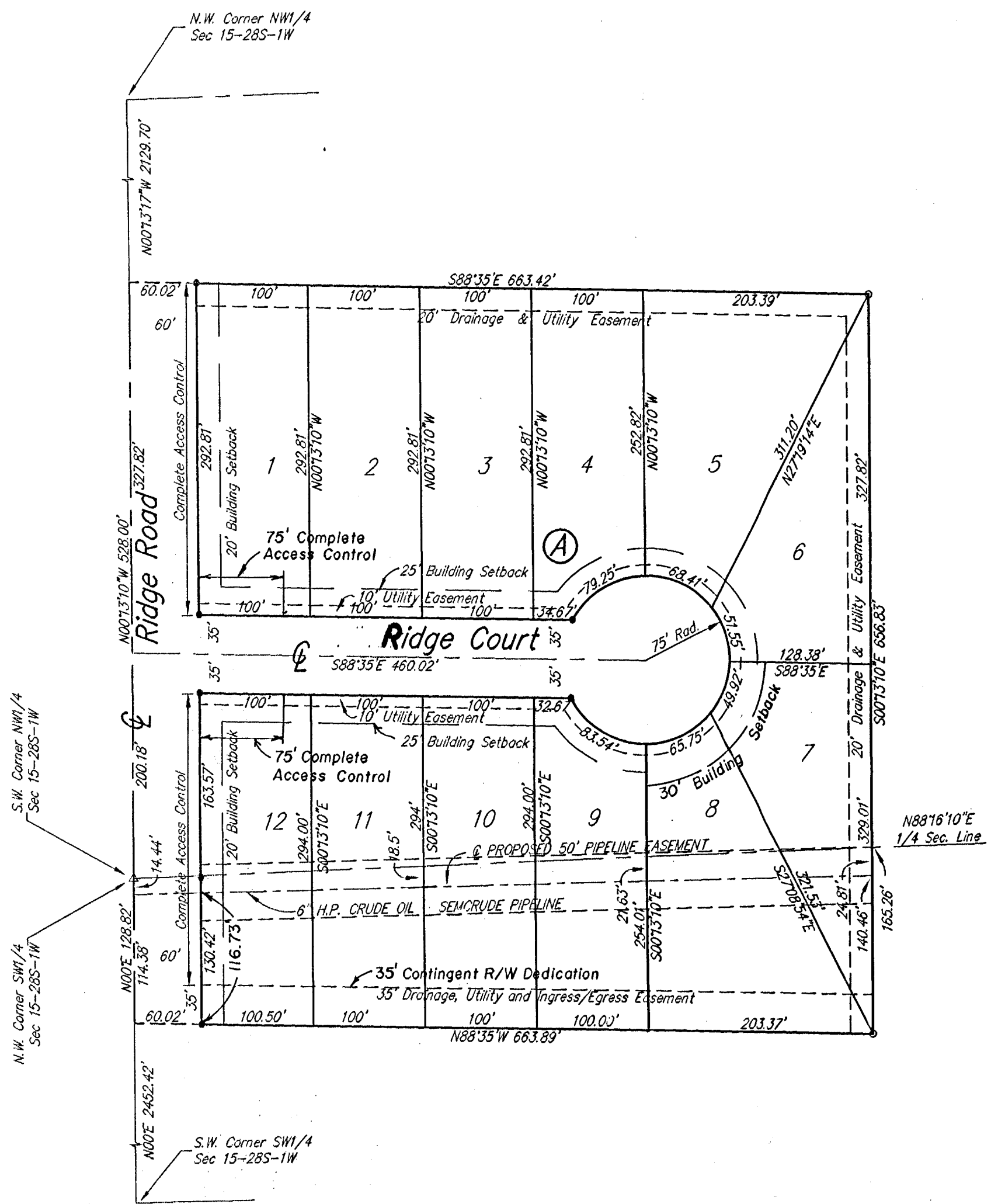
Entered on transfer record this 10th day of March, 2005.

Don Brace County Clerk

State of Kansas) SS  
Sedgwick County)

This is to certify that this plat has been filed for record in the office of the Register of Deeds, this 10th day of March, 2005, at 10:00 o'clock A.M. and is duly recorded.

Bill Meek Register of Deeds  
Tonya Buckingham Deputy



- LEGEND
- △ = 1/4 SECTION CORNER (FOUND)
  - = 1/2" STEEL PIN (FOUND)
  - = 5/8" REBAR W/SAVOY CAP (SET)

