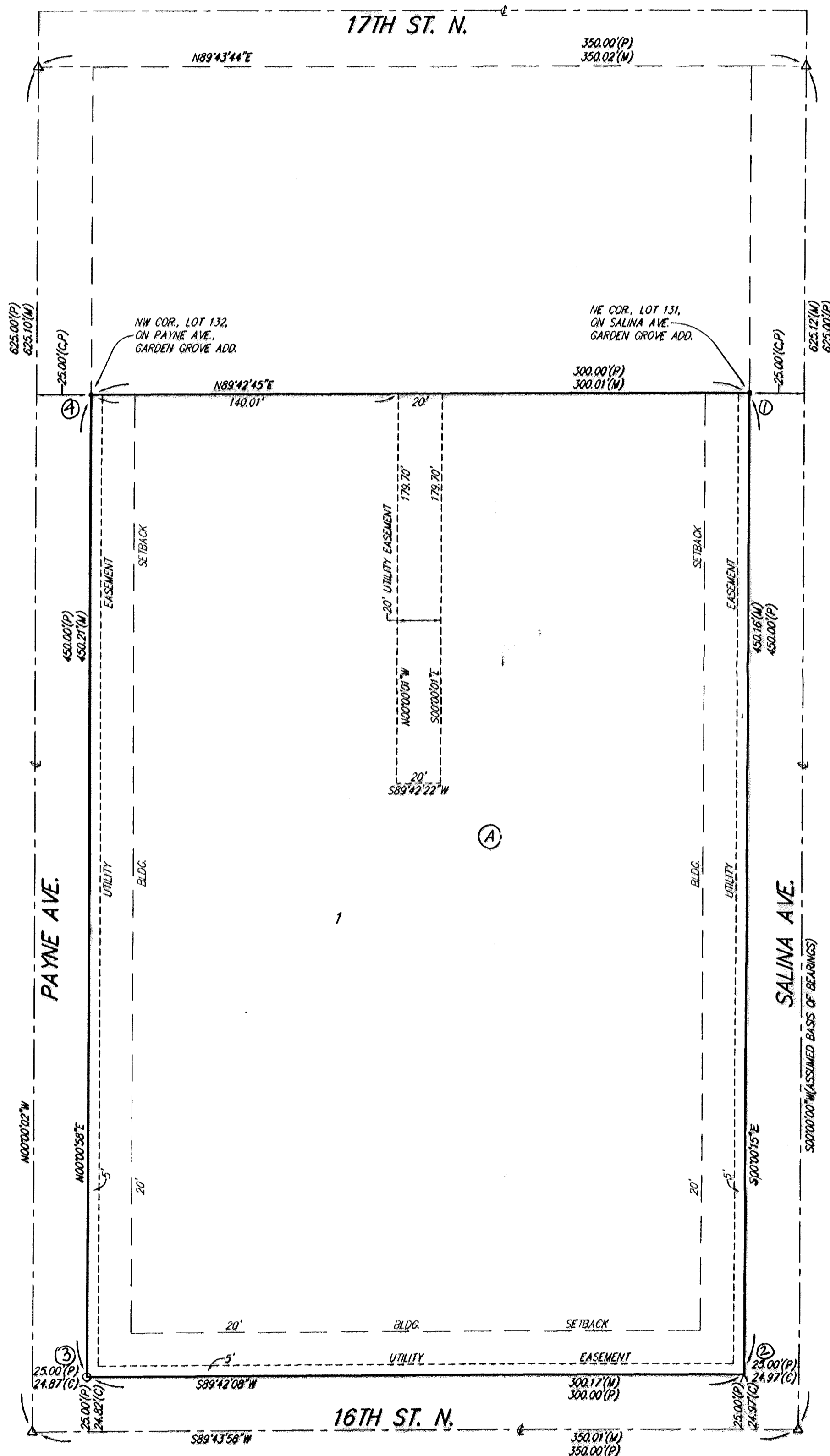


WOODLAND ELEMENTARY SCHOOL ADDITION WICHITA, SEDGWICK COUNTY, KANSAS



- △ = 3/4" IRON IN TRIMBLE (FOUND)
- = 3/4" PINCHED IRON (FOUND)
- ▲ = CHISELED V NOTCH (FOUND)
- = 1/2" REBAR W/ "RUGGLES & BOHM" CAP (FOUND)

- (M) = MEASURED
- (P) = PLATTED
- (C) = CALCULATED

NOTE:
A DRAINAGE PLAN HAS BEEN DEVELOPED FOR THIS SUBDIVISION AND IS ON FILE WITH THE CITY OF WICHITA, KANSAS. DRAINAGE INTENT SHALL REMAIN AS DEPICTED OR AS MODIFIED WITH THE APPROVAL OF THE CITY ENGINEER OF THE CITY OF WICHITA, KANSAS. NO OBSTRUCTIONS WHICH IMPEDE THE FLOW OF THIS DRAINAGE PLAN SHALL BE ALLOWED.

State of Kansas) SS We, Baughman Company, P.A., Surveyors in Sedgwick County) and state do hereby certify that we have surveyed and platted "WOODLAND ELEMENTARY SCHOOL ADDITION", Wichita, Sedgwick County, Kansas and that the accompanying plat is a true and correct exhibit of the property surveyed, described as and being a replat of all of Lots 122, 124, 126, 128, 130 and 132, on Payne Avenue, Garden Grove Addition to Wichita, Kansas, together with all of Lots 129 and 131, on Salina Avenue, Garden Grove Addition to Wichita, Kansas, together with all of Reserve A, Garden Grove Addition to Wichita, Kansas, together with Lots 2 and 3, Block C, Ferrells Fourth Addition to the City of Wichita, Kansas, EXCEPT that part of said Lot 2 platted as Garden Grove Addition to Wichita, Kansas.

Existing public easements and dedications being vacated by virtue of K.S.A. 12-512(b). All being situated in the SW1/4 of Sec. 8, Twp. 27-S, R-1-E of the 6th P.M., Sedgwick County, Kansas.

Baughman Company, P.A.

Michael D. Conroy
Michael D. Conroy, Surveyor
Seal: MICHAEL D. CONROY, REGISTERED SURVEYOR, KANSAS, 13-971, 5/17/2004

This plat of "WOODLAND ELEMENTARY SCHOOL ADDITION", Wichita, Sedgwick County, Kansas has been submitted to and approved by the Wichita-Sedgwick County Metropolitan Area Planning Commission, Wichita, Kansas.

Dated this _____ day of _____, 2004.
Wichita-Sedgwick County Metropolitan Area Planning Commission

Ronald L. Marnell, Chair

John L. Schlegel, Secretary

This plat approved and all dedications shown hereon accepted by the City Council of the City of Wichita, Kansas, this _____ day of _____, 2004.

Carlos Mayans, Mayor

Karen Sublett, City Clerk

Reviewed in accordance with K.S.A. 58-2005 on this _____ day of _____, 2004.

Know all men by these presents that we, the undersigned, have caused the land in the surveyors certificate to be platted into a Lot and a Block to be known as "WOODLAND ELEMENTARY SCHOOL ADDITION", Wichita, Sedgwick County, Kansas. The utility easements are hereby granted as indicated for the construction and maintenance of all public utilities.

Unified School District No. 259,
Wichita, Sedgwick County, Kansas

Michael Kinard
Michael Kinard, President

Tricia L. Robello, L.S. #1246
Deputy County Surveyor
Sedgwick County, Kansas

Entered on transfer record this _____ day of _____, 2004.

Don Brace, County Clerk

State of Kansas) SS The foregoing instrument acknowledged before me, this 14th day of June, 2004, by Michael Kinard, President of Unified School District No. 259, Wichita, Sedgwick County, Kansas, on behalf of the Unified School District.



Mike Willome
MIKE WILLOME, Notary Public

My App't. Exp. 6/1/07



State of Kansas) SS This is to certify that this plat has been filed for record in the office of the Register of Deeds, this _____ day of _____, 2004 at _____ o'clock _____ M. and is duly recorded.

Bill Meek, Register of Deeds

Linda Kizzire, Deputy