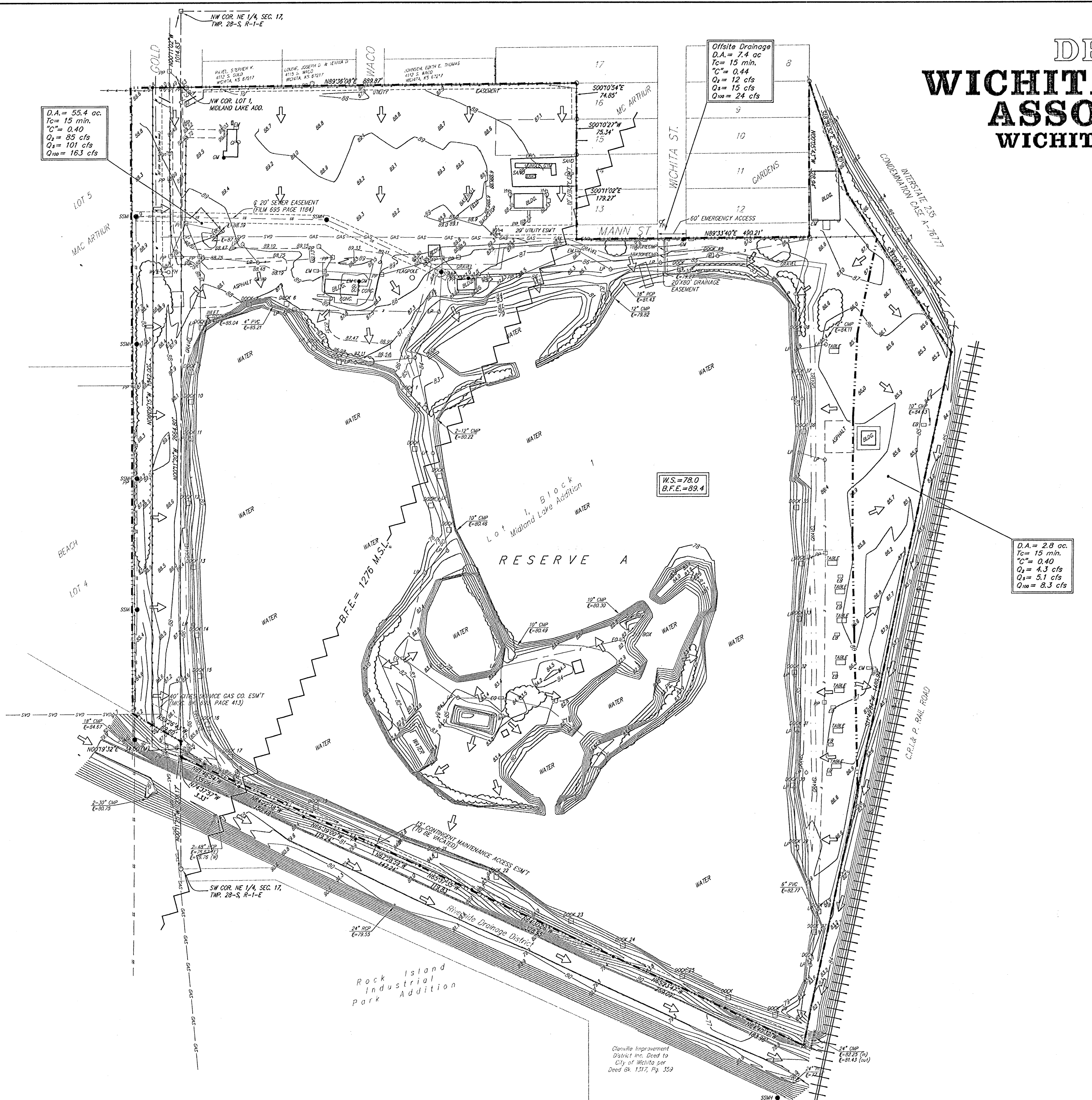


# DRAINAGE CONCEPT

## WICHITA BOEING EMPLOYEES ASSOCIATION ADDITION

### WICHITA, SEDGWICK COUNTY, KANSAS



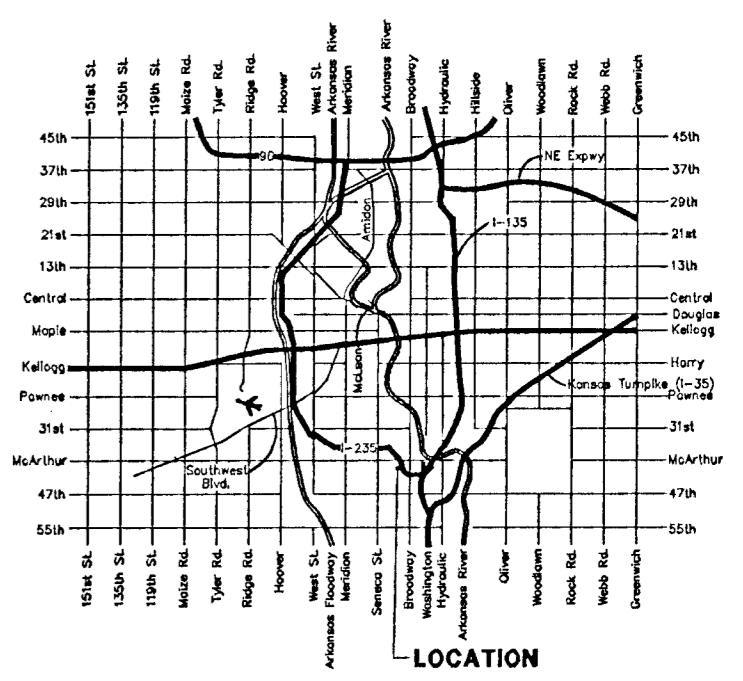
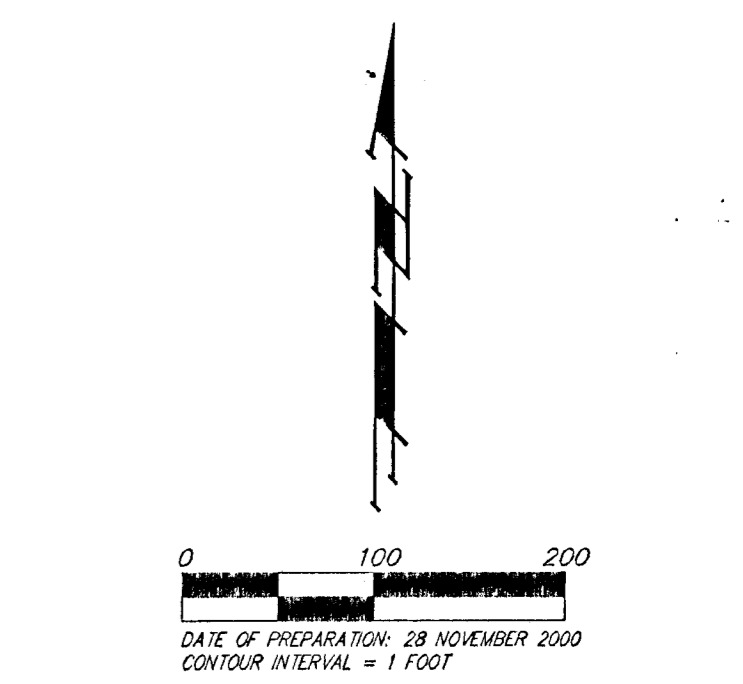
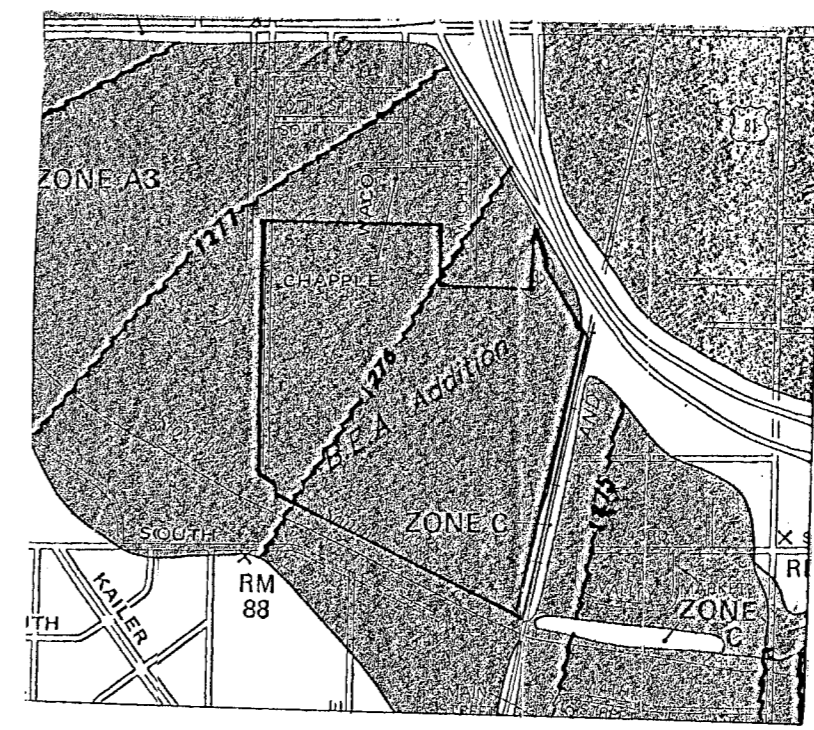
**OWNER:**  
 Wichita Boeing Employees Association  
 Attn. Ms. Sandy Smith  
 4226 S. Gold  
 Wichita, Kansas 67217

**LEGAL DESCRIPTION:**  
 Lot 1, Block 1, Midland Lake Addition, to Wichita, Sedgwick County, Kansas, the south line as determined in District Court Case No. 98-C-1110; TOGETHER with the W/2 of Lot 15, McArthur Gardens, Sedgwick County, Kansas; TOGETHER with the east 60.00 feet of the following described tract: A tract in the NW 1/4 of Sec. 17, Twp. 28-S, R-1-E of the 6th P.M., Sedgwick County, Kansas, described as beginning at the NW corner of the S1/2 of the SW corner of Midland Lake Addition to Wichita, Sedgwick County, Kansas; thence west along the north line of said Midland Lake Addition extended west, 106.12 feet to a point on the east line of MacArthur Beach, An Addition to Wichita, Sedgwick County, Kansas thence south along the east line of said MacArthur Beach Addition, 1317.78 feet to the SE corner of Lot 4, Block 1, in said MacArthur Beach Addition; thence southeasterly along the southerly line of said Lot 4, extended southeasterly 116.85 feet to a point on the west line of said Midland Lake Addition; thence north along the west line of said Midland Lake Addition 1377.70 feet to the point of beginning.

**BENCHMARK:**  
 C.O.W. Thimble 112.59 feet WNW of center of MacArthur and Gold St. south

Reserve "A" is hereby reserved for landscaping, open space, sidewalks, private streets, gazebos, buildings, recreational areas and related facilities, drainage purposes, and utilities as confined to easements.

**Drainage Note:**  
 This Parcel of Land is Located in A FEMA Flood Hazard Zone A3 Per The Below FIRM Map. (Community/ Panel Number; 200328 0035B) Effective Date: May 15, 1986.



- CO = Cleanout
- CP = Cable TV Pedestal
- EB = Electric Box
- FI = Fire Hydrant
- GM = Gas Meter
- GU = Guard Post (Bollard)
- GA = Gas Anchor
- GV = Gas Valve
- ICV = Irrigation Control Valve - Valve Box
- LP = Light Pole
- MB = Mail Box
- MW = Monitoring Well
- PM = Pipeline Marker
- EM = Electric Meter
- EO = Electric Outlet
- PP = Power Pole
- RM = Right-of-Way Marker
- SM = Sign
- SSMH = Sanitary Sewer Manhole
- SSWB = Southwestern Bell Manhole
- SSWB Ped = Southwestern Bell Pedestal
- SSWM = Stormwater Sewer Manhole
- T = Tree
- WV = Cased Well
- W = Water Meter
- WV = Water Valve
- WVT = Water Vault
- XTM = Transformer
- YH = Yard Hydrant (Spigot)

- WATER LINE
  - SOUTHWESTERN BELL
  - GAS LINE
  - CABLE TV
  - FENCE
  - ELECTRIC LINE
  - SANITARY SEWER
- # = #4 REBAR W/ "BAUGHMAN" CAP (FOUND)
  - = #4 REBAR W/ "BAUGHMAN" CAP (SET)
  - ⊙ = #4 REBAR W/ "TILSON" CAP (FOUND)
  - ⊗ = 3/4" IRON (FOUND)
  - = 1/2" IRON (FOUND)
  - = THIMBLE (FOUND)
  - (M) = MEASURED
  - (D) = DESCRIBED
  - (P) = PLATED
  - (C) = CALCULATED