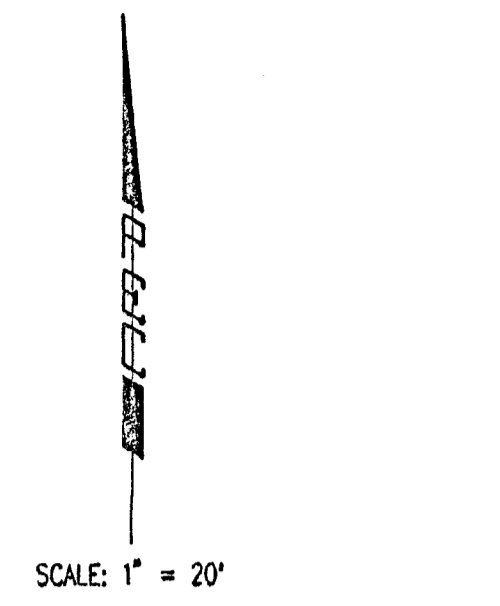
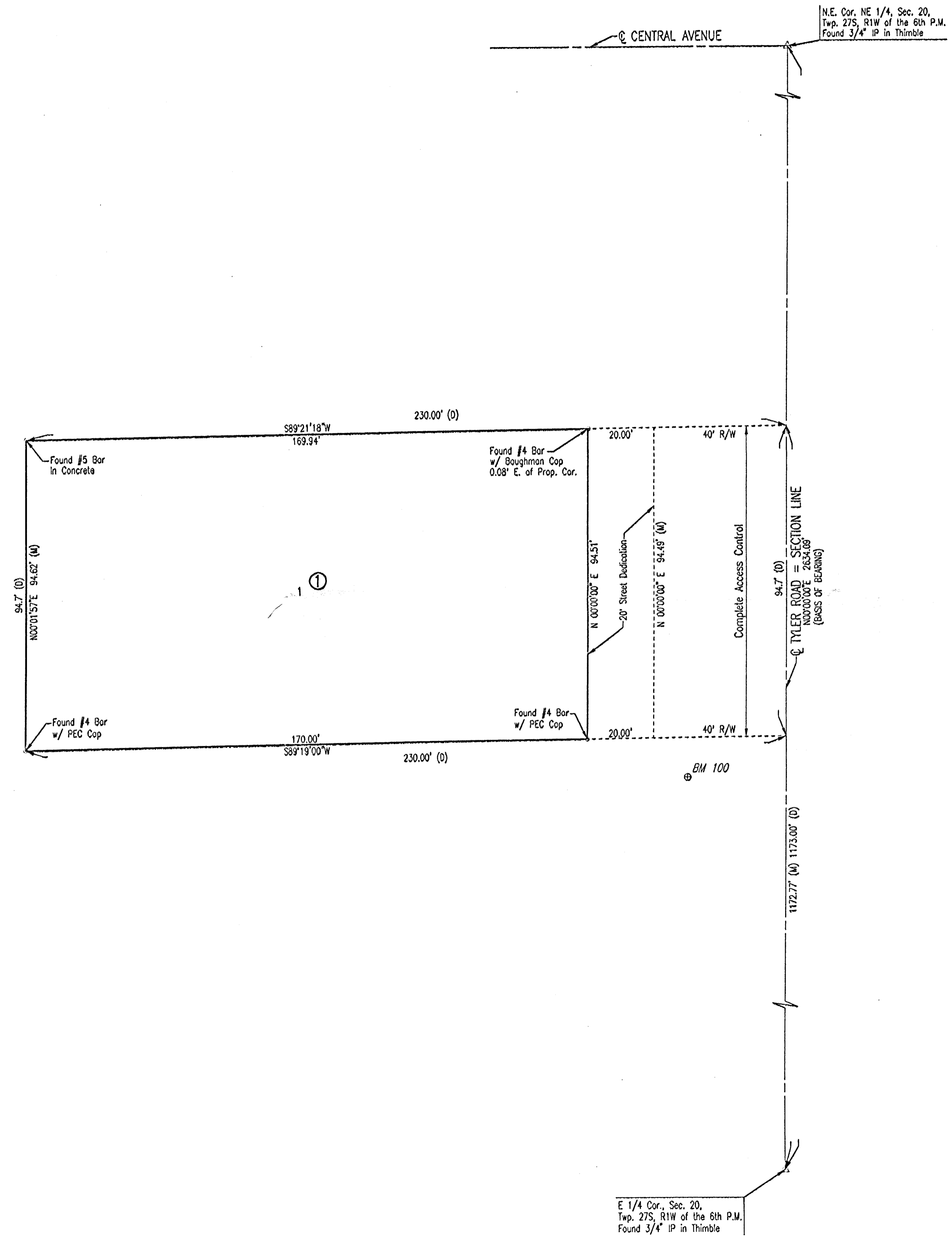


WICHITA FAMILY VISION 2ND ADDITION TO WICHITA, SEDGWICK COUNTY, KANSAS



• = 1/2" REBAR W/PEC CAP UNLESS OTHERWISE NOTED
 (D) = DEED DIMENSION
 (M) = MEASURED DIMENSION

BENCHMARKS:
 PROJECT BENCHMARK:
 #100 - CHISELED SQUARE CUT ON TOP OF CURB AT 437 N. TYLER ROAD.
 ELEV. 141.555 CITY DATUM
 ELEV. 1328.955 N.G.V.D.
 C.O.W. BENCHMARK:
 WESTLINK AND CENTRAL. TOP OF NORTH HANDRAIL, AT EAST END OF RCBC.
 ELEV. 147.411 CITY DATUM
 ELEV. 1334.81 N.G.V.D.

STATE OF KANSAS }
 COUNTY OF SEDGWICK } SS

WE, PROFESSIONAL ENGINEERING CONSULTANTS, P.A., ENGINEERS AND SURVEYORS IN AFORESAID STATE AND COUNTY, DO HEREBY CERTIFY THAT OF THIS 27th DAY OF August, 2003, WE HAVE SURVEYED AND PLATTED WICHITA FAMILY VISION 2ND ADDITION TO WICHITA, SEDGWICK COUNTY, KANSAS, INTO A LOT AND A BLOCK, THE SAME BEING DESCRIBED AS FOLLOWS:

A TRACT IN THE NORTHEAST QUARTER OF SECTION 20, TOWNSHIP 27 SOUTH, RANGE 1 WEST OF THE SIXTH PRINCIPAL MERIDIAN, SEDGWICK COUNTY, KANSAS, DESCRIBED AS FOLLOWS:
 BEGINNING AT A POINT IN THE EAST LINE OF SAID SECTION 20, 1173.0 FEET NORTH OF THE SOUTHEAST CORNER OF SAID NORTHEAST QUARTER; THENCE WEST PARALLEL WITH THE SOUTH LINE OF SAID NORTHEAST QUARTER, A DISTANCE OF 230 FEET; THENCE SOUTH 94.7 FEET; THENCE EAST 230 FEET TO A POINT IN THE EAST LINE OF SAID NORTHEAST QUARTER; THENCE NORTH 94.7 FEET TO THE POINT OF BEGINNING. THE EAST 40 FEET BEING RESERVED FOR ROAD PURPOSES.

JAMES R. BECKETT, R.L.S. NO. 832
 PROFESSIONAL ENGINEERING CONSULTANTS, P.A.

A DRAINAGE PLAN HAS BEEN APPROVED FOR THIS PLAT. ALL DRAINAGE EASEMENTS AND RIGHTS-OF-WAY SHALL REMAIN AT ESTABLISHED GRADES AND UNOBSTRUCTED TO ALLOW FOR THE CONVEYANCE OF STORM WATER, UNLESS MODIFIED WITH THE APPROVAL OF THE CITY ENGINEER.

THE 20' STREET DEDICATION ALONG TYLER ROAD IS HEREBY DEDICATED TO AND FOR THE USE OF THE PUBLIC.

ALL ABUTTER'S RIGHT OF ACCESS TO AND FROM TYLER ROAD OVER AND ACROSS THE EAST LINE OF LOT 1, BLOCK 1 ARE HEREBY GRANTED TO THE CITY OF WICHITA.

KNOW ALL MEN BY THESE PRESENTS THAT WE, THE UNDERSIGNED PROPERTY OWNERS OF THE LAND AS ABOVE SET FORTH IN THE SURVEYOR'S CERTIFICATE, HAVE CAUSED THE LAND TO BE SURVEYED AND PLATTED INTO A LOT AND A BLOCK, THE SAME TO BE KNOWN AS WICHITA FAMILY VISION 2ND ADDITION TO WICHITA, SEDGWICK COUNTY, KANSAS.

OWNER:
 TYLER ROAD PROPERTIES, L.L.C.

ROBERT C. NELSON, PRESIDENT

STATE OF KANSAS }
 COUNTY OF SEDGWICK } SS

THIS INSTRUMENT WAS ACKNOWLEDGED BEFORE ME ON THIS _____ DAY OF _____, 2003, BY ROBERT C. NELSON, PRESIDENT OF TYLER ROAD PROPERTIES, L.L.C.

_____, NOTARY PUBLIC

MY APPOINTMENT EXPIRES: _____

THIS PLAT OF WICHITA FAMILY VISION 2ND ADDITION HAS BEEN SUBMITTED TO AND APPROVED BY THE WICHITA-SEDGWICK COUNTY METROPOLITAN AREA PLANNING COMMISSION, WICHITA, KANSAS.

DATED THIS _____ DAY OF _____, 2003.

WICHITA-SEDGWICK COUNTY METROPOLITAN AREA PLANNING COMMISSION

_____, CHAIR

BERNARD A. HENTZEN

_____, SECRETARY

JOHN L. SCHLEGEL

REVIEWED IN ACCORDANCE WITH K.S.A. 58-2005 ON THIS _____ DAY OF _____, 2003.

TRICIA L. ROBELLO, LS #1246
 DEPUTY COUNTY SURVEYOR
 SEDGWICK COUNTY KANSAS

THIS PLAT IS APPROVED AND ALL DEDICATIONS SHOWN HEREON, IF ANY ARE ACCEPTED BY THE CITY COUNCIL OF THE CITY OF WICHITA, KANSAS, THIS _____ DAY OF _____, 2003.

_____, MAYOR

CARLOS MAYANS

_____, CITY CLERK

PAT GRAVES

ENTERED ON TRANSFER RECORD THIS _____ DAY OF _____, 2003.

_____, COUNTY CLERK

DON BRACE

THIS IS TO CERTIFY THAT THIS INSTRUMENT WAS FILED FOR RECORD IN THE REGISTER OF DEEDS OFFICE AT _____, MO., ON THE _____ DAY OF _____, 2003.

_____, REGISTER OF DEEDS

BILL WEEK

_____, DEPUTY

LINDA KIZZIRE