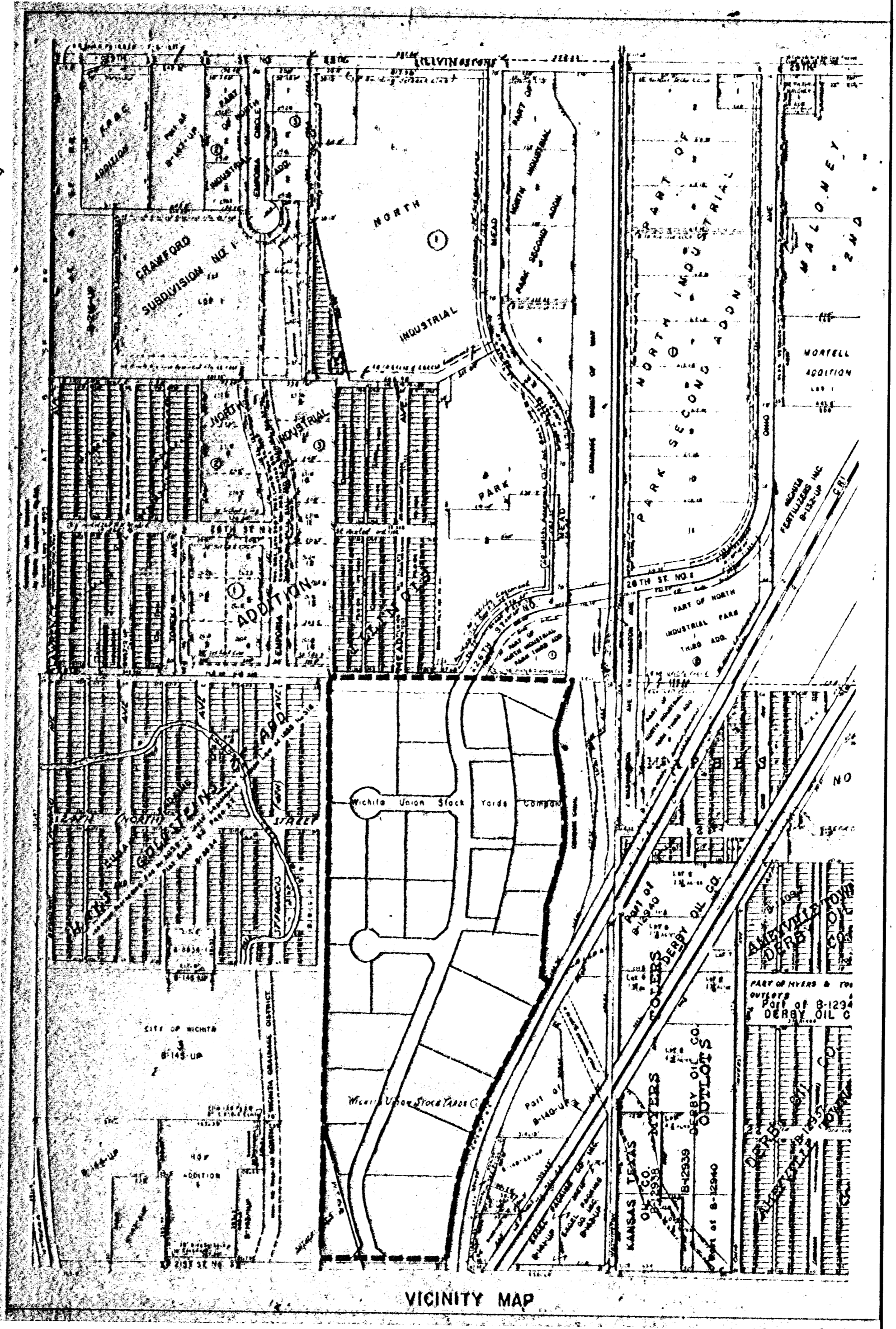
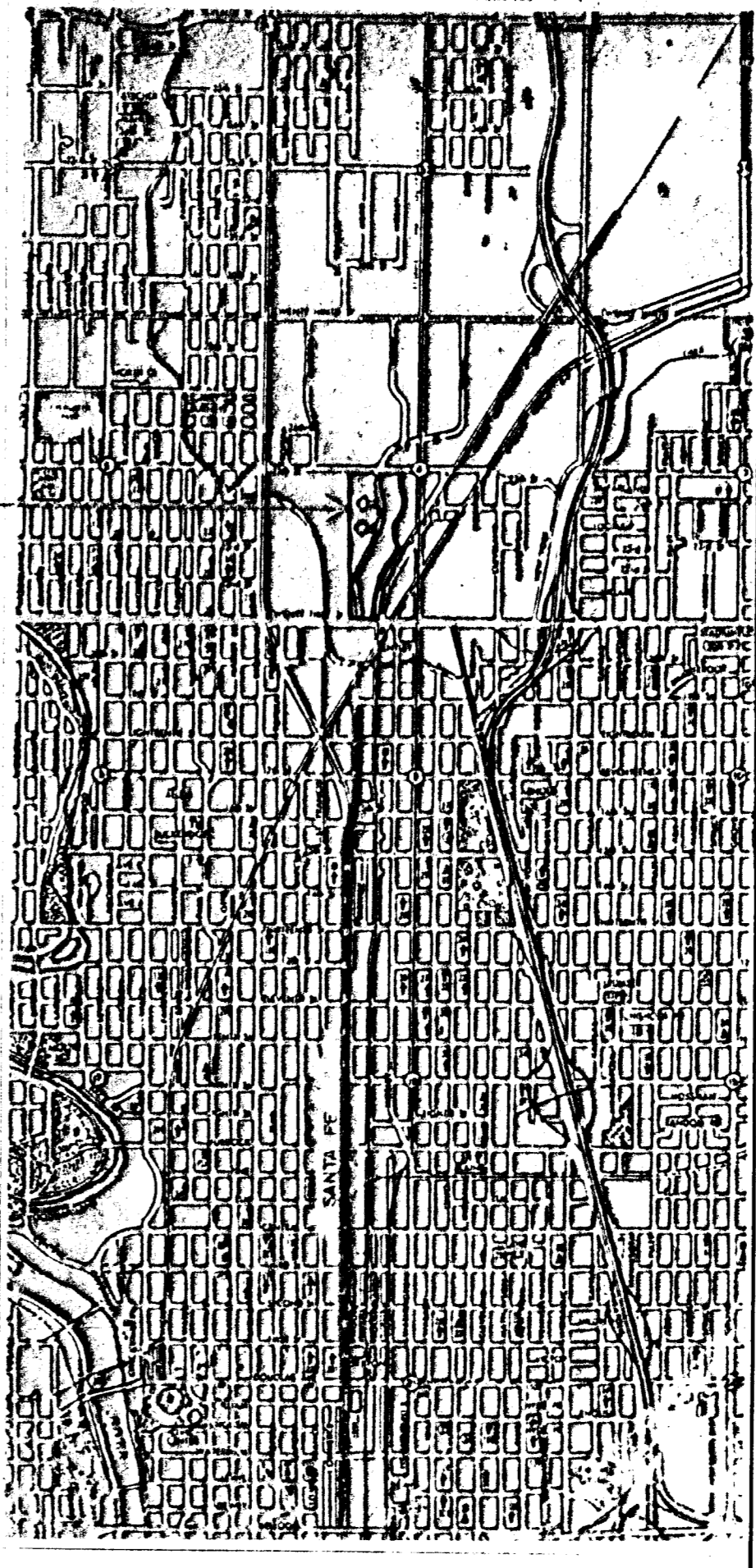
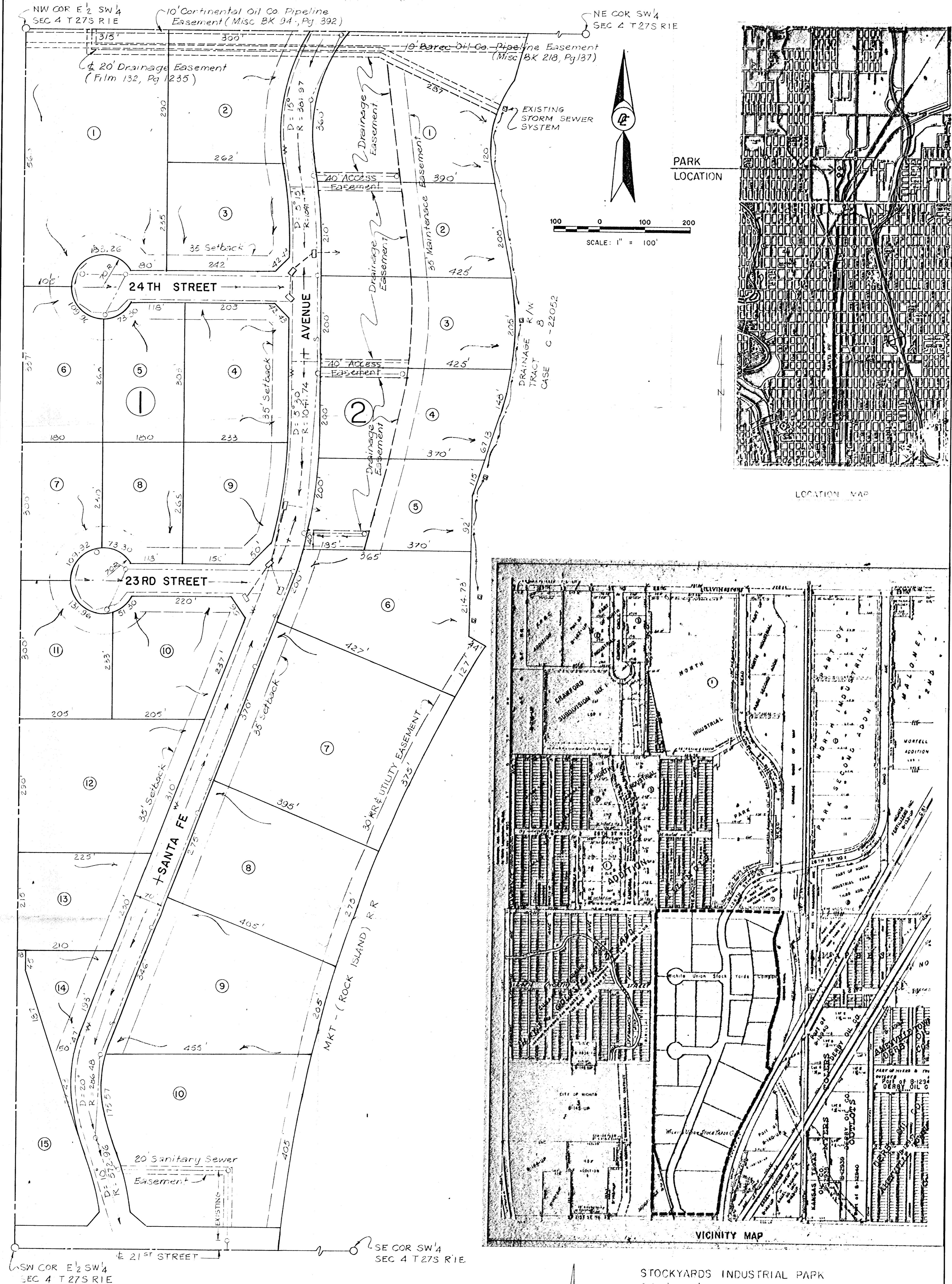


STOCKYARDS INDUSTRIAL PARK



- LEGEND**
- Direction of street drainage
 - Direction of lot drainage
 - Storm sewer system (Proposed)
 - Sanitary Sewer (Proposed)
 - Water line (Proposed)

SCALE 1" = 200'

STOCKYARDS INDUSTRIAL PARK
 THE E 1/2, SW 1/4, SEC 4 T 27S R 1E EXCEPT
 THAT PART LYING EAST OF THE WEST R/W
 LINE OF THE FRISCO (NEW MK-1) RR

WICHITA UNION STOCKYARDS CO.
 OWNER AND DEVELOPER

DELMATER
ENGINEERS
AND
SURVEYORS
 INCORPORATED

PRINTED
DEC 20 1985
DEI

PROPOSED DRAINAGE
AND
UTILITIES