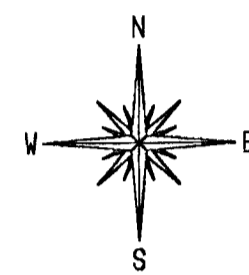


VICINITY MAP OF "THORN CREEK FARMS" WICHITA, SEDGWICK COUNTY, KANSAS



SCALE: 1" = 26'

Date of Topography: May 12, 2003

LEGEND:

- = #4 Rebar with ID cap "G&A CLS-95", set
- CM = Gas Meter
- PP = Power pole
- WM = Water Meter
- WW = Water Well
- G—G—G—G—G—G— = Underground gas line
- E—E—E—E—E—E— = Overhead electric line
- U—U—U—U—U—U— = Underground electric line
- T—T—T—T—T—T— = Underground telephone line
- W—W—W—W—W—W— = Underground 12" water line

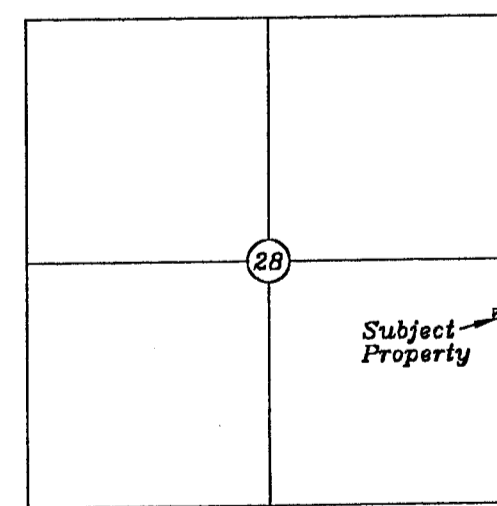
Current Zoning CO
Associated Zoning Case #ZON 2003-00012

Benchmark for Topography:
City of Wichita Disc at NE corner of intersection of Harry and Greenwich. On SW corner of concrete base for traffic signal light.
Elevation 166.48 City Datum, 1343.88 NGVD

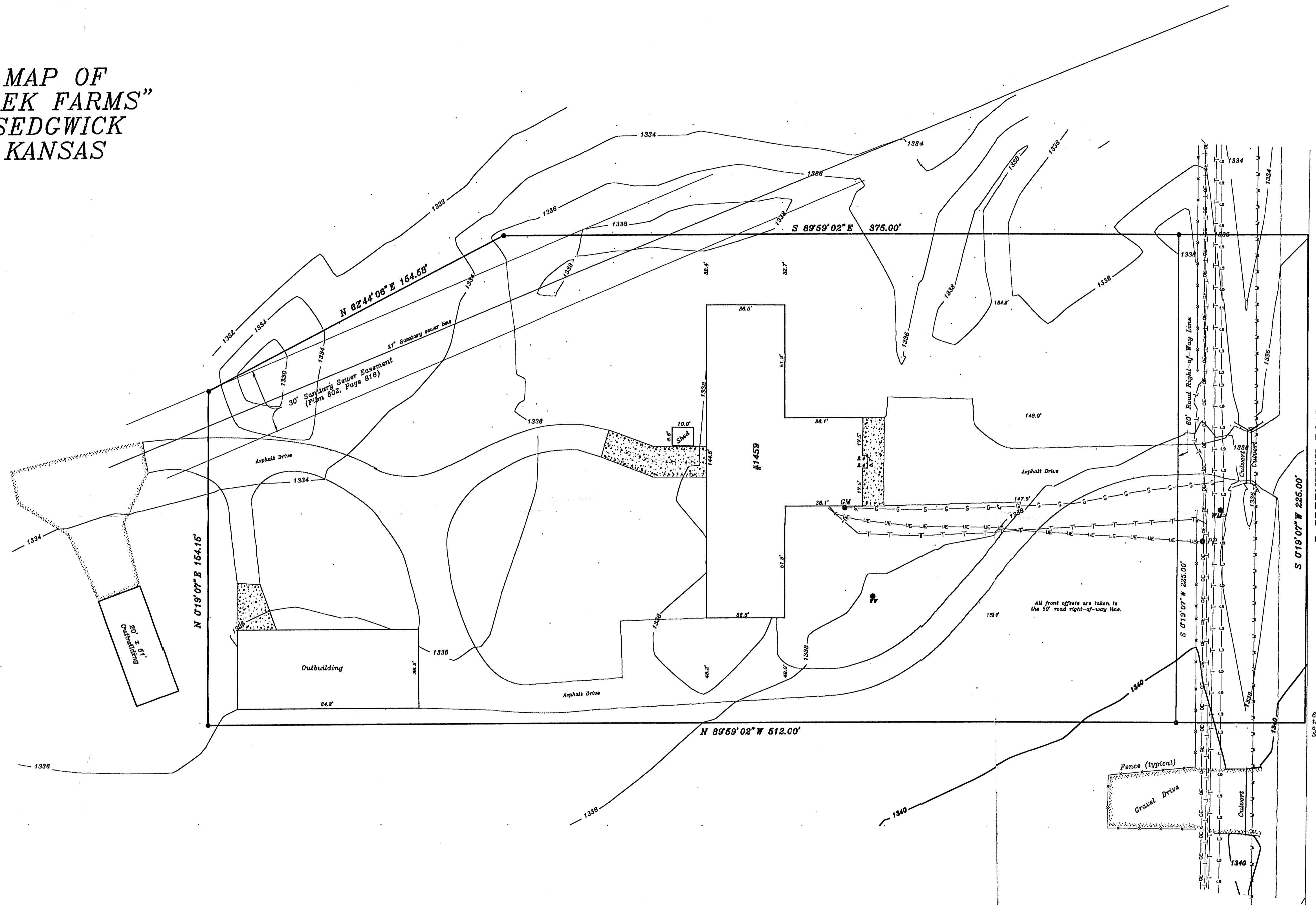
NOTE:
Subject property is already developed. A Cross-Lot Drainage Agreement has been established with the tract to the north and west. No change of existing topography is planned.

Section 28
Township 27 South
Range 2 East

Vicinity Map



HARRY



GREENWICH ROAD

663.88' north of the SE corner of the SE 1/4 of Section 28



Griffiths & Associates, Inc.
Land Surveyors

6101 Della Road
Wichita, KS 67204
(316) 267-2900
fax (316) 755-2588