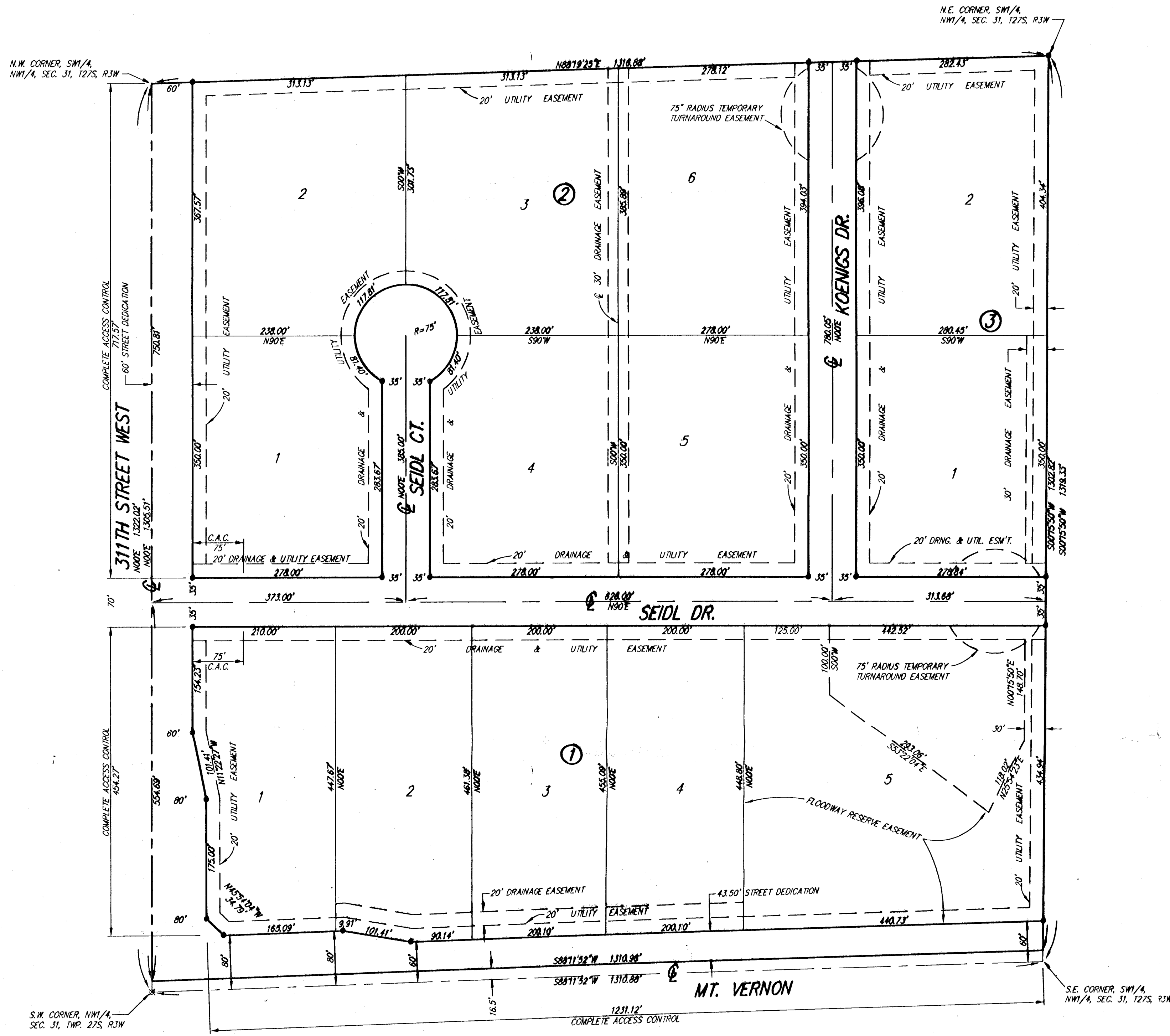


8-23-04

# SUNSET ESTATES

Sedgwick County, Kansas



State of Kansas) SS  
Sedgwick County)

We, Ruggles & Bohm, P.A., Land Surveyors in aforesaid county and state, do hereby certify that, under the supervision of the undersigned, we have surveyed and platted "SUNSET ESTATES", Sedgwick County, Kansas, and that the accompanying plat is a true and correct exhibit of the property surveyed, described as follows:

LEGAL DESCRIPTION:

The W1/2 of the S1/2 of the NW1/4, of Sec. 31, T27S, R3W of the 8th P.M., Sedgwick County, Kansas, except the south 16 1/2 feet for road.

All public easements and dedications are hereby vacated by virtue of K.S.A. 12-512(b).

Ruggles & Bohm, P.A.

*Thomas C. Ruggles*  
Thomas C. Ruggles  
Land Surveyor

This plat of "SUNSET ESTATES", Sedgwick County, Kansas, has been submitted to and approved by the Wichita-Sedgwick County Metropolitan Area Planning Commission, Wichita, Kansas.  
Dated this \_\_\_\_\_ day of \_\_\_\_\_, 2004.

Wichita-Sedgwick County Metropolitan Area Planning Commission

\_\_\_\_\_  
Chairman  
Ronald L. Marnell  
\_\_\_\_\_  
Secretary  
John L. Schlegel

This plat is approved and all dedications shown hereon, if any, accepted by the Board of County Commissioners of Sedgwick County, Kansas, this \_\_\_\_\_ day of \_\_\_\_\_, 2004.



\_\_\_\_\_  
Chairman  
Thomas G. Winters

ATTEST:

\_\_\_\_\_  
County Clerk  
Don Brace

Reviewed in accordance with K.S.A. 58-2003 on this \_\_\_\_\_ day of \_\_\_\_\_, 2004.

\_\_\_\_\_  
Deputy County Surveyor  
Thera L. Robello, LS #1248

Entered on transfer record this \_\_\_\_\_ day of \_\_\_\_\_, 2004.

\_\_\_\_\_  
County Clerk  
Don Brace

State of Kansas) SS  
Sedgwick County)

This is to certify that this plat has been filed for record in the office of the Register of Deeds, this \_\_\_\_\_ day of \_\_\_\_\_, 2004, at \_\_\_\_\_ o'clock \_\_\_\_\_ M., and is duly recorded.

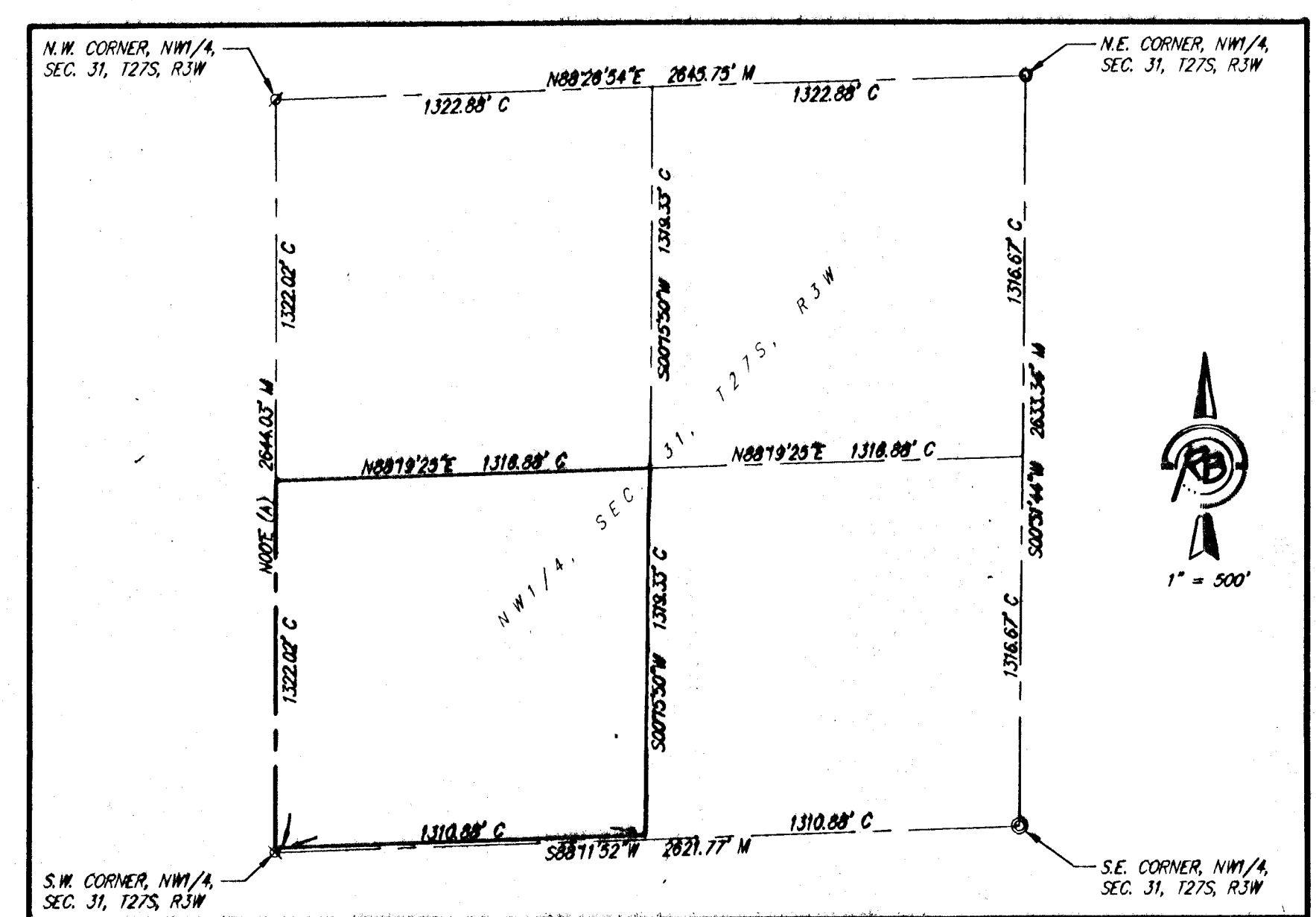
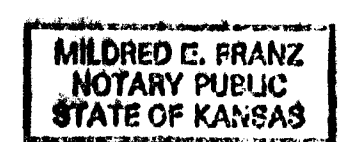
\_\_\_\_\_  
Register of Deeds  
Bill Meek  
\_\_\_\_\_  
Deputy  
Linda Kizize

State of Kansas) SS  
Sedgwick County)

The foregoing instrument acknowledged before me, this 18<sup>th</sup> day of August, 2004, by J. Brian Foster and Kimberly R. Foster.

*Mildred E. Franz*  
Mildred E. Franz  
Notary Public

My appointment expires 02-13-2007



1" = 100'  
(A) = ASSUMED  
M = MEASURED  
C = CALCULATED

- SURVEY MARKER LEGEND
- = LEAD PLUG IN CONCRETE
  - ⊙ = 3/4" IRON PIPE
  - ⊘ = 1/2" REBAR
  - ⊗ = 5/8" REBAR
  - ⊛ = 5/8" REBAR W/ RIB CAP (SET)

BENCH MARK: I.R. SPIKE IN POWER POLE 22' S.W. OF THE WEST QUARTER CORNER OF SEC. 31, T27S, R3W ELEV=1451.08 (NWGD)

| BLOCK | LOF NO | ELEVATION (ft amsl) |
|-------|--------|---------------------|
| 1     | 4.5    | 1440                |



**Ruggles & Bohm, P.A.**  
Engineering, Surveying, Land Planning  
924 North Main  
Wichita, Kansas 67203  
www.rtkansas.com  
(316) 284-8008  
(316) 284-4821 fax  
E-mail: info@rtkansas.com

DWG FILE: SURVEY BASE  
PROJECT NO. 2487P  
AUGUST 3, 2004