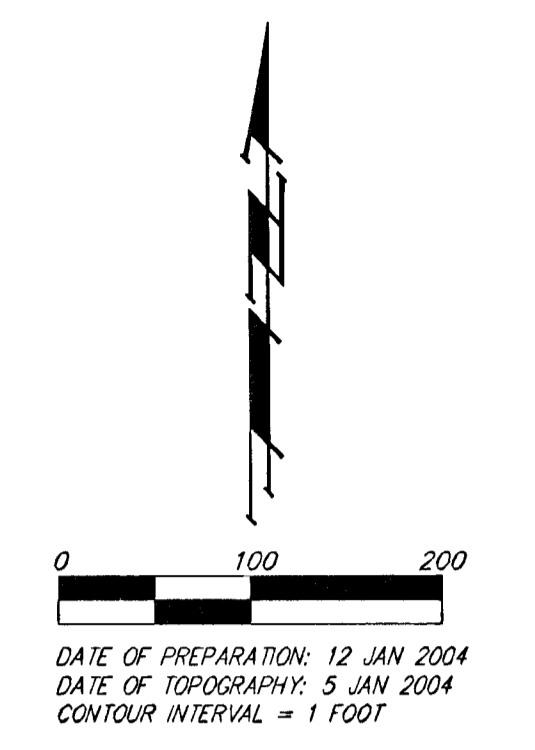
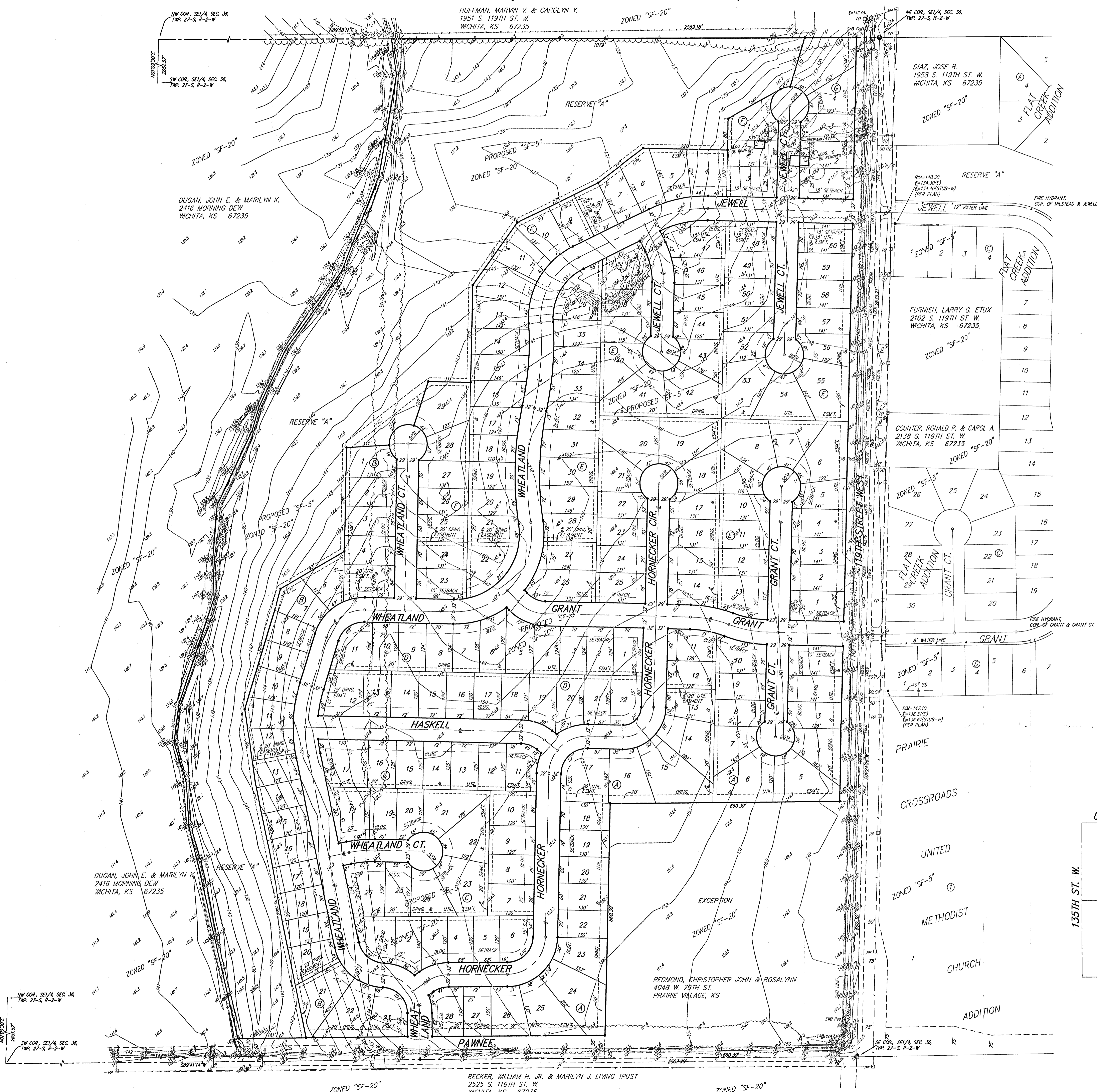


PRELIMINARY PLAT
TURKEY CREEK ADDITION
 WICHITA, SEDGWICK COUNTY, KANSAS



OWNER:
 JOHN E. DUGAN
 2416 MORNING DEW
 WICHITA, KANSAS 67235

DEVELOPER:
 H&M DEVELOPMENT
 ATTN: PAUL E. KELSEY
 716 N. 119TH ST. W.
 WICHITA, KANSAS 67212

LEGAL DESCRIPTION:
 A TRACT IN THE SE 1/4 OF SEC. 36,
 TWP. 27-S, R-2-W OF THE 6TH P.M.,
 SEDGWICK COUNTY, KANSAS

BENCHMARK:
 119TH ST. W. & PAWNEE
 CITY OF WICHITA BENCHMARK DISC
 NE CORNER OF INTERSECTION
 40.00' E. OF E.
 30.00' N. OF E.
 59.50' N. OF P.P. AT SE COR.
 OF INTERSECTION
 156.80' N.E. OF E. OF E. COR.
 HEADWALL ON CULVERT
 UNDER 119TH ST. W.
 ELEV. = H&M CITY DATUM
 (PER COUNTY RECORD)

• = #4 REBAR W/ "BAUGHMAN" CAP

NOTE:
 RESERVE "A" IS HEREBY RESERVED FOR
 LAKES, DRAINAGE PURPOSES, SIDEWALKS,
 LANDSCAPING, BERMS, OPEN SPACES,
 AND UTILITIES AS CONTAINED TO EASEMENTS

- 35" = Tree (and size)
- EB = Electric Box
- FH = Fire Hydrant
- OP = Guy Pole
- GP = Guy Anchor
- HP = High Line Pole
- LP = Light Pole
- MB = Man Box
- SMW = S&B Marker
- PP = Power Pole
- SP = Sign
- SSM = Sanitary Sewer Manhole
- SWP = Southwestern Bell Pedestal
- CM = Cased Well
- TR = Transformer

