

Note To Field Engineer:
 Elevation of Existing
 8" Storm Water Sewer
 To Be Checked Prior
 To Staking Sewer.

100
 Sand Fill
 To 5.19
 To 5.19

94.00 Bottom East
 94.58 ft

8" V.C.P. @ 1.5% Grade

610 Lin. Ft.

8" V.C.P. @ 1.5% Grade

94.58 ft

94.78 Out

AVE.
 6111 28 5851

Phadon Ln

Hestell

marked

Natural Ground

Lotus

St

St

St

St

St

St

St

St

St

25'

25'

25'

25'

25'

25'

25'

25'

25'

25'

25'

25'

25'

25'

25'

25'

25'

25'

25'

25'

25'

25'

25'

25'

25'

25'

25'

25'

25'

25'

25'

25'

25'

25'

25'

25'

25'

25'

25'

25'

25'

25'

25'

25'

25'

25'

25'

25'

25'

25'

25'

25'

25'

25'

25'

25'

25'

25'

25'

25'

25'

25'

25'

25'

25'

25'

25'

25'

25'

25'

25'

25'

25'

25'

25'

25'

25'

25'

25'

25'

25'

25'

25'

25'

25'

25'

25'

25'

25'

25'

25'

25'

25'

25'

25'

25'

25'

25'

25'

25'

25'

25'

25'

25'

25'

25'

25'

25'

25'

25'

25'

25'

25'

25'

25'

25'

25'

25'

25'

25'

25'

25'

25'

25'

25'

25'

25'

25'

25'

25'

25'

25'

25'

25'

25'

25'

25'

25'

25'

25'

25'

25'

25'

25'

25'

25'

25'

25'

25'

25'

25'

25'

25'

25'

25'

25'

25'

25'

25'

25'

25'

25'

25'

25'

25'

25'

25'

25'

25'

25'

25'

25'

25'

25'

25'

25'

25'

25'

25'

25'

25'

25'

25'

25'

25'

25'

25'

25'

25'

25'

25'

25'

25'

25'

25'

25'

25'

25'

25'

25'

25'

25'

25'

25'

25'

25'

25'

25'

25'

25'

25'

25'

25'

25'

25'

25'

25'

25'

25'

25'

25'

25'

25'

25'

25'

25'

25'

25'

25'

25'

25'

25'

25'

25'

25'

25'

25'

25'

25'

25'

25'

25'

25'

25'

25'

25'

25'

25'

25'

25'

25'

25'

25'

25'

25'

25'

25'

25'

25'

25'

25'

25'

25'

25'

25'

25'

25'

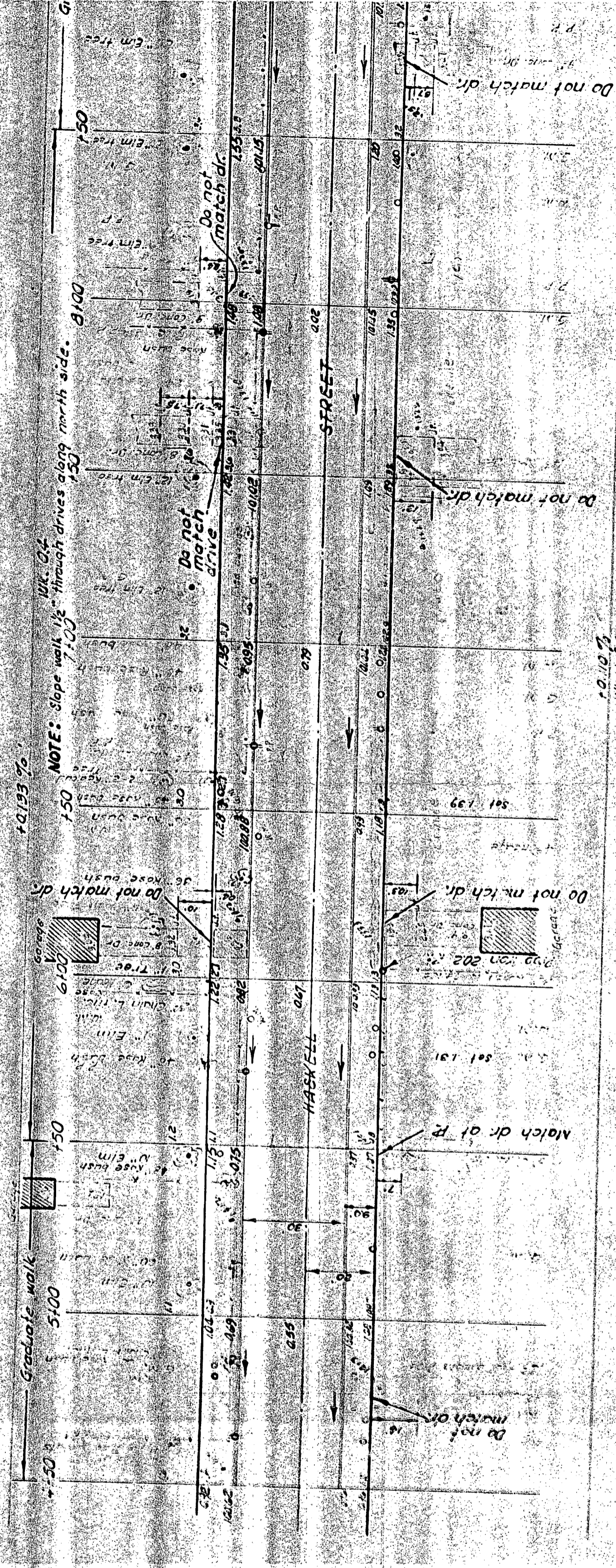
25'

25'

25'

25'

25'



NOTE: Slope walk 1/2" through drives along north side.

10.193%

Graduate walk

5+50

5+100

5+150

5+200

5+250

5+300

5+350

5+400

5+450

5+500

5+550

5+600

5+650

5+700

5+750

5+800

5+850

5+900

5+950

6+000

6+050

6+100

6+150

6+200

6+250

6+300

6+350

6+400

6+450

6+500

6+550

6+600

6+650

6+700

6+750

6+800

6+850

6+900

6+950

7+000

7+050

7+100

7+150

7+200

7+250

7+300

7+350

7+400

7+450

7+500

7+550

7+600

7+650

7+700

7+750

7+800

7+850

7+900

7+950

8+000

8+050

8+100

8+150

8+200

8+250

8+300

8+350

8+400

8+450

8+500

8+550

8+600

8+650

8+700

8+750

8+800

8+850

8+900

8+950

9+000

9+050

9+100

9+150

9+200

9+250

9+300

9+350

9+400

9+450

9+500

9+550

9+600

9+650

9+700

9+750

9+800

9+850

9+900

9+950

10+000

10+050

10+100

10+150

10+200

10+250

10+300

10+350

10+400

10+450

10+500

10+550

10+600

10+650

10+700

10+750

10+800

10+850

10+900

10+950

11+000

11+050

11+100

11+150

11+200

11+250

11+300

11+350

11+400

11+450

11+500

11+550

11+600

11+650

11+700

11+750

11+800

11+850

11+900

11+950

12+000

12+050

12+100

12+150

12+200

12+250

12+300

12+350

12+400

12+450

12+500

12+550

12+600

12+650

12+700

12+750

12+800

12+850

12+900

12+950

13+000

13+050

13+100

13+150

13+200

13+250

13+300

13+350

13+400

13+450

13+500

13+550

13+600

13+650

13+700

13+750

13+800

13+850

13+900

13+950

14+000

14+050

14+100

14+150

14+200

14+250

14+300

14+350

14+400

14+450

14+500

14+550

14+600

14+650

14+700

14+750

14+800

14+850

14+900

14+950

15+000

15+050

15+100

15+150

15+200

15+250

15+300

15+350

15+400

15+450

15+500

15+550

15+600

15+650

15+700

15+750

15+800

15+850

15+900

15+950

16+000

16+050

16+100

16+150

16+200

16+250

16+300

16+350

16+400

16+450

16+500

16+550

16+600

16+650

16+700

16+750

16+800

16+850

16+900

16+950

17+000

17+050

17+100

17+150

17+200

17+250

17+300

17+350

17+400

17+450

17+500

17+550

17+600

17+650

17+700

17+750

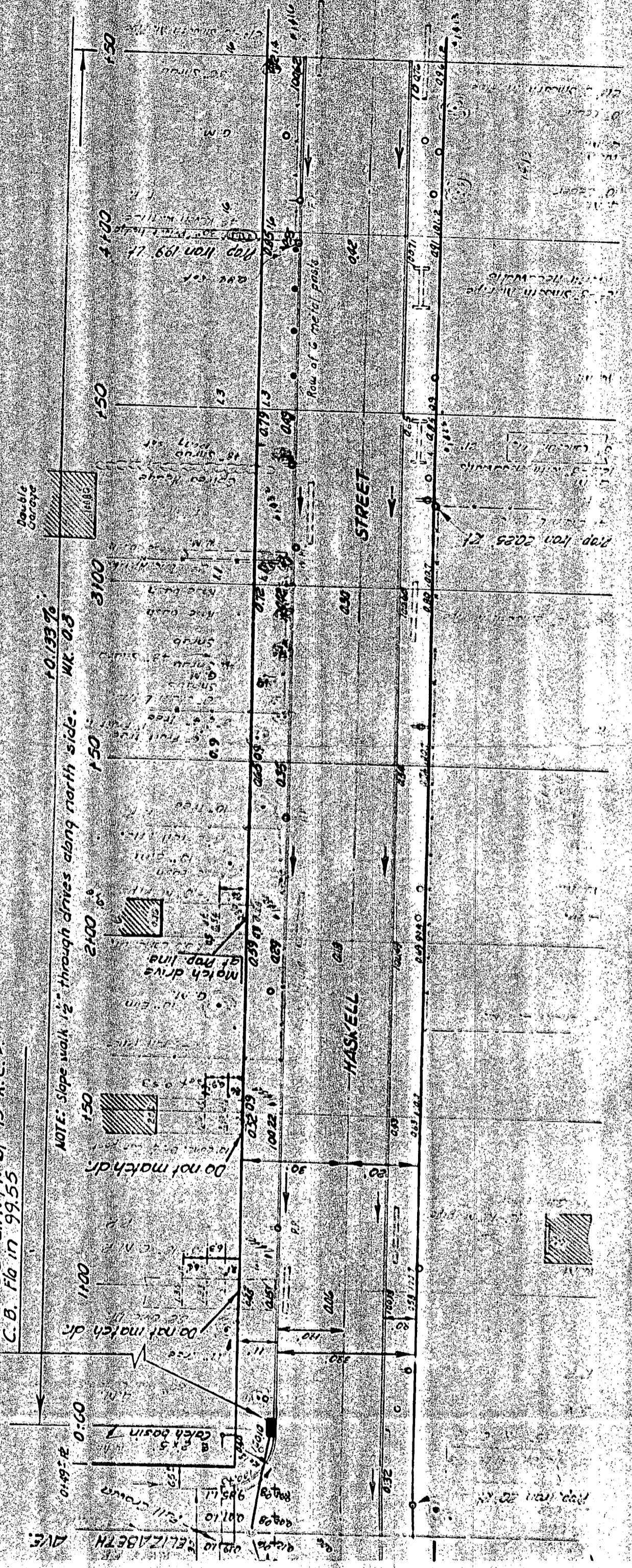
17+800

NOTE: TO FIELD ENG. & CONTRACTOR
 All entrance pipes are to be disposed
 of in accordance with instruction
 from the city dirt checker.

NOTE:
 install 1'-2x5 Catch basin
 and 32" dia. ft. of 15" R.C.P.
 C.B. Fla in 99.55

NOTE: Slope walk 1/2" through drives along north side.
 10.133% MK 0.3

NOTE:
 Adjust existing 2'x5' catch basin
 to match new pavement
 Fla in 99.73



HASKE
 W.E. ELIZABETH AVE
 30' C



EARTHWORK
 PROP. EXCAVATION FILL CITY