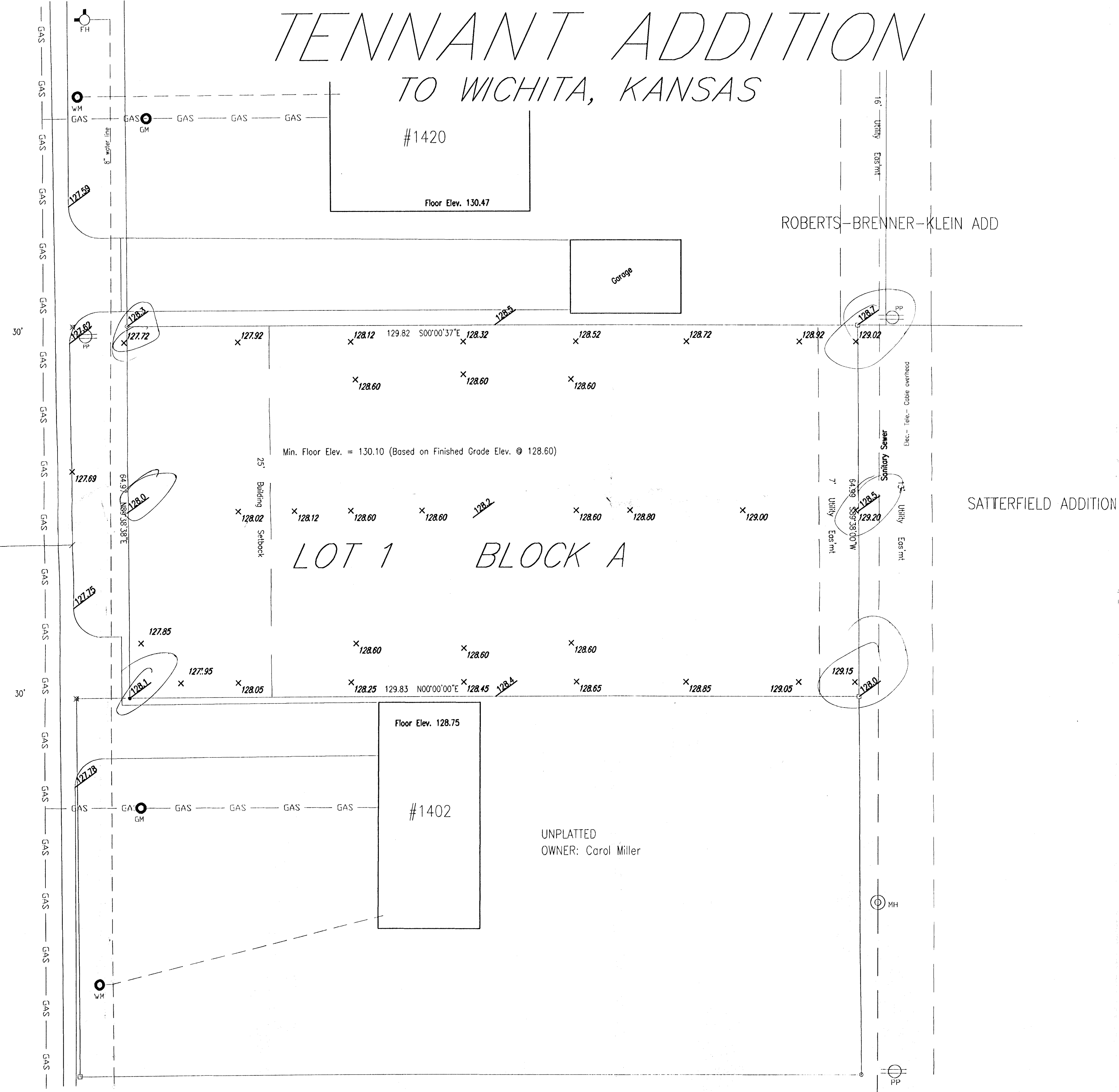
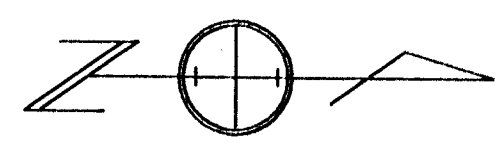


TENNANT ADDITION TO WICHITA, KANSAS



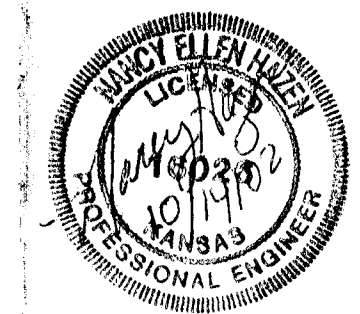
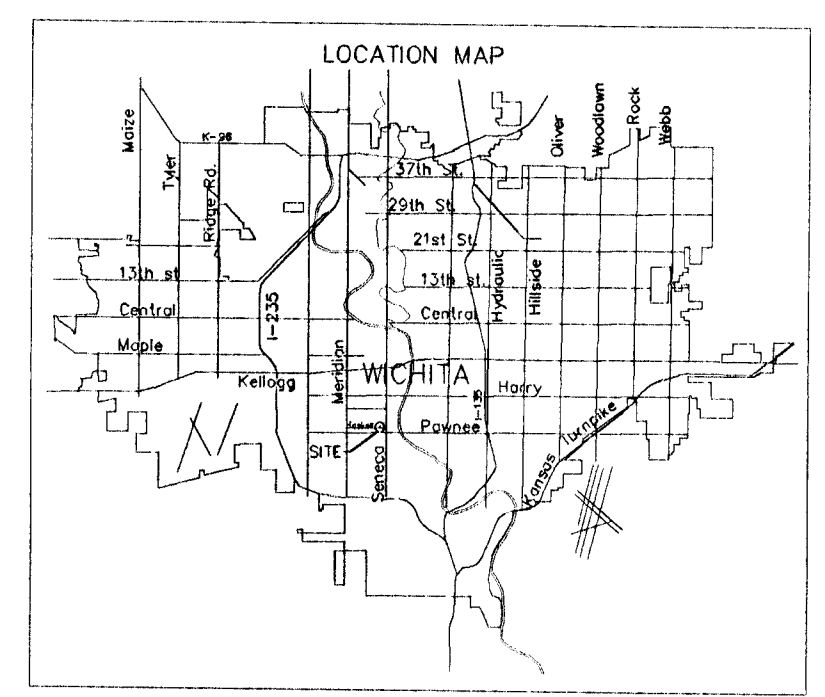
DRAINAGE LEGEND
 x 128.72 PROPOSED CONTOUR
 128.72 SPOT ELEVATION (EXISTING)

- - 5/8" Armstrong LS 780' capped rebar set
- - 1/2" iron pipe found
- - 1/2" iron pipe found
- - "ACL" capped rebar found
- ⊗ - chisled "X" in concrete found
- GM - calculated from measurements
- D - dead distance
- P - plot distance
- MH - manhole "telephone"
- MSS - manhole "sanitary sewer"
- ⊕ - power pole
- ⊕ - fire hydrant
- ⊕ - water meter
- ⊕ - gas meter



SCALE 1"=10'

BM: Chisled square top of curb near the S.E. corner of Lot 1
 Elev. = 127.75 C.O.W.



TENNANT ADDITION TO WICHITA, KANSAS		
SCALE: 1" = 10'-0"	APPROVED BY:	DRAWN BY: NBH
DATE: 10-14-02		REVISED:
DRAINAGE PLAN		
ROTHCO CONSTRUCTION 304 East 21st Andover, KS 67002 (316)-733-0600		DRAWING NUMBER SD-1

#1420

Floor Elev. 130.47

Garage

ROBERTS-BRENNER-KLEIN ADD

SATTERFIELD ADDITION

LOT 1 BLOCK A

Min. Floor Elev. = 130.10 (Based on Finished Grade Elev. @ 128.60)

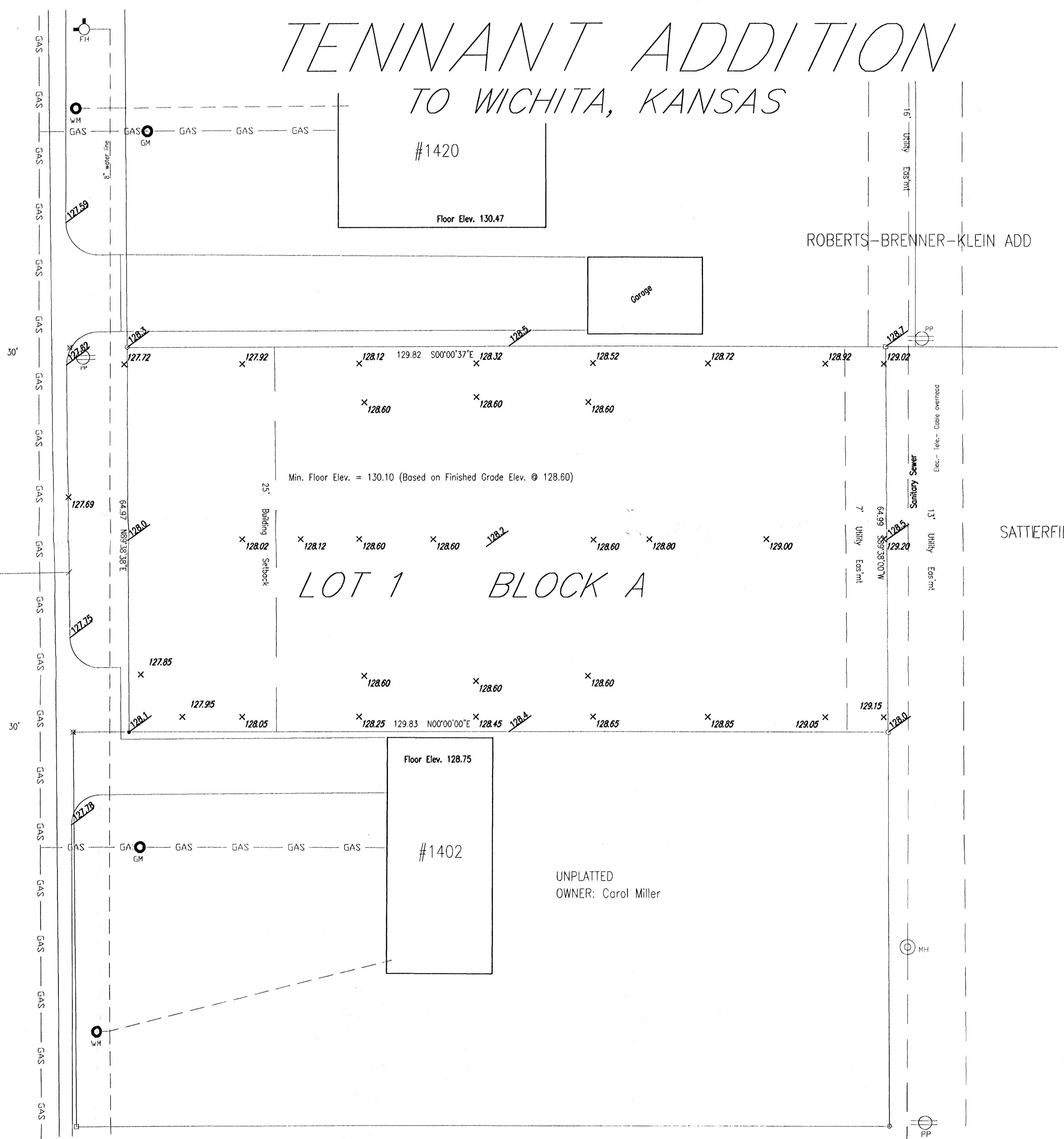
Floor Elev. 128.75

#1402

UNPLATTED
OWNER: Carol Miller

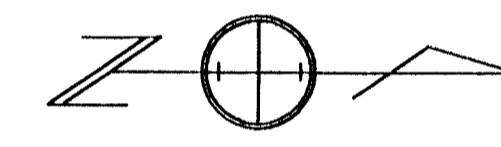
HASKELL

TENNANT ADDITION TO WICHITA, KANSAS



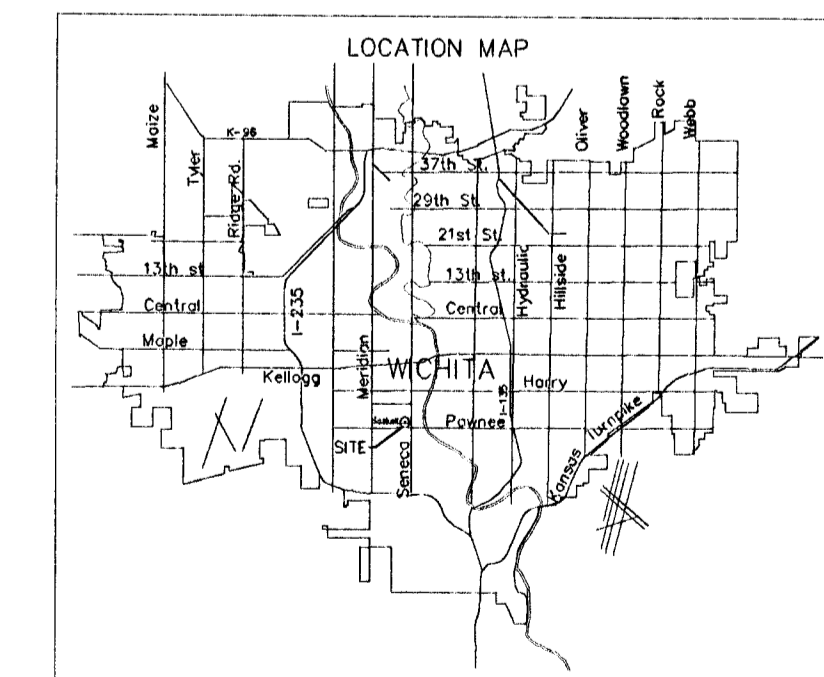
DRAINAGE LEGEND
 x 128.72 PROPOSED CONTOUR
 x 128.60 SPOT ELEVATION (EXISTING)

- - 5/8" Armstrong LS 780' capped rebar set
- - 1/2" iron pipe found
- ⊙ - "PK" not found
- - "ACLS" capped rebar found
- ⊗ - chisled "x" in concrete found
- CM - calculated from measurements
- D - dead distance
- P - plot distance
- MH - manhole "telephone"
- MSS - manhole "sanitary sewer"
- ⊕ - power pole
- ⊙ - fire hydrant
- ⊙ - water meter
- ⊙ - gas meter



SCALE 1"=10'

EM: Chisled square top of curb near the S.E. corner of Lot 1
 Elev. = 127.75 C.O.W.



TENNANT ADDITION TO WICHITA, KANSAS		
SCALE: 1" = 10'-0"	APPROVED BY:	DRAWN BY: NEH
DATE: 10-14-02		REVISED:
DRAINAGE PLAN		
ROTHCO CONSTRUCTION 304 East 21st Andover, KS 67002 (316)-733-0660		DRAWING NUMBER SD-1