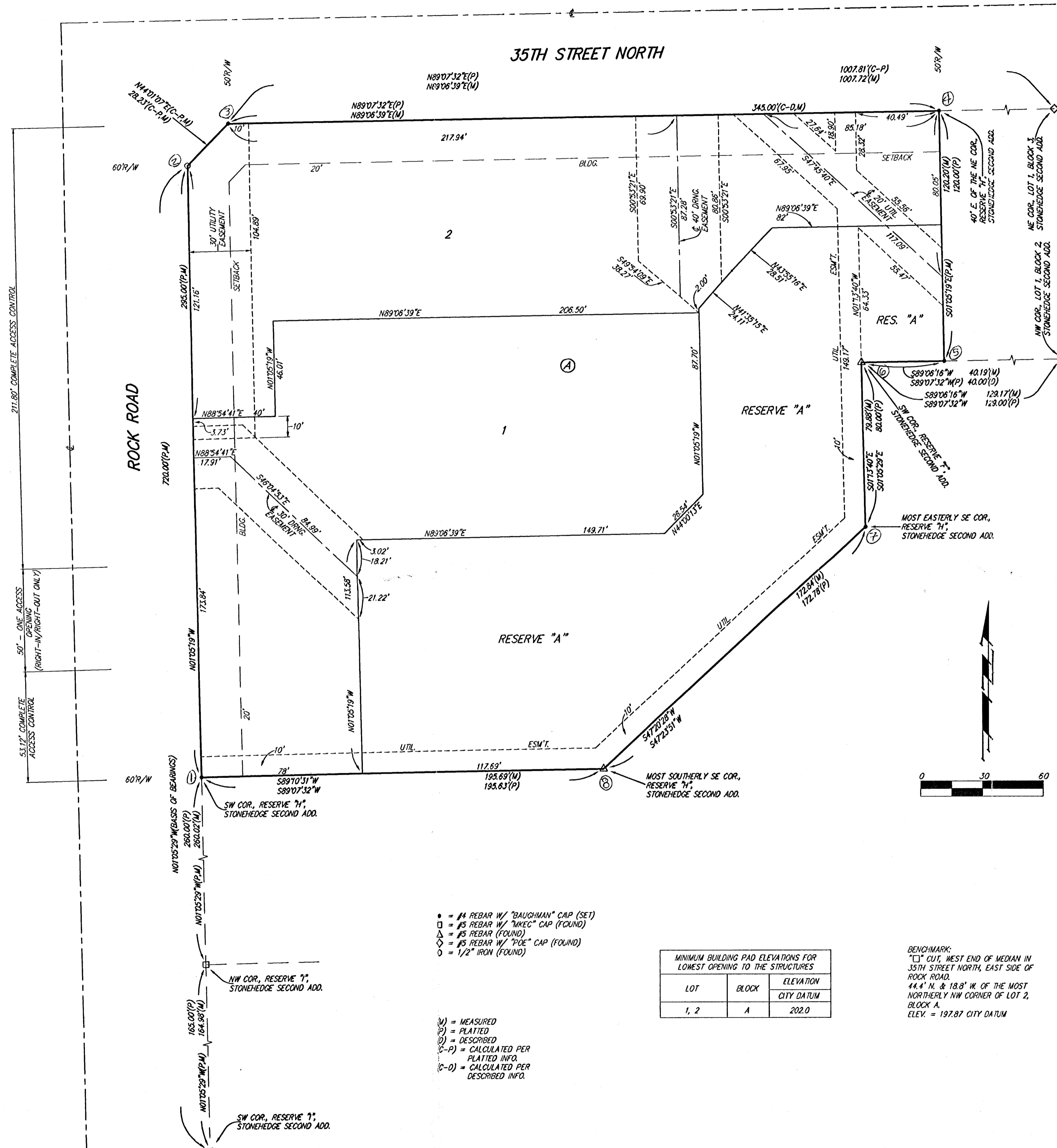


FILE COPY

Rev. 3/19/04

STONEHEDGE 3RD ADDITION WICHITA, SEDGWICK COUNTY, KANSAS



- = #4 REBAR W/ "BAUGHMAN" CAP (SET)
 - = #5 REBAR W/ "MREC" CAP (FOUND)
 - △ = #5 REBAR (FOUND)
 - ◇ = #5 REBAR W/ "P/OE" CAP (FOUND)
 - = 1/2" IRON (FOUND)
- (M) = MEASURED
 (P) = PLATTED
 (D) = DESCRIBED
 (C-P) = CALCULATED PER PLATTED INFO.
 (C-D) = CALCULATED PER DESCRIBED INFO.

MINIMUM BUILDING PAD ELEVATIONS FOR LOWEST OPENING TO THE STRUCTURES		
LOT	BLOCK	ELEVATION
1, 2	A	202.0

BENCHMARK: "C1" CURB WEST END OF MEDIAN IN 35TH STREET NORTH, EAST SIDE OF ROCK ROAD. 44.4' N. & 18.8' W. OF THE MOST NORTHERLY NW CORNER OF LOT 2, BLOCK A. ELEV. = 197.87 CITY DATUM

NOTE: A DRAINAGE PLAN HAS BEEN DEVELOPED FOR THIS SUBDIVISION AND IS ON FILE WITH THE CITY OF WICHITA, KANSAS. DRAINAGE INTENT SHALL REMAIN AS DEPICTED OR AS MODIFIED WITH THE APPROVAL OF THE CITY ENGINEER OF THE CITY OF WICHITA, KANSAS. NO OBSTRUCTIONS WHICH IMPED THE FLOW OF THIS DRAINAGE PLAN SHALL BE ALLOWED.

State of Kansas) SS We, Baughman Company, P.A., Surveyors in Sedgwick County) do hereby certify that we have surveyed and platted "STONEHEDGE 3RD ADDITION", Wichita, Sedgwick County, Kansas and that the accompanying plat is a true and correct exhibit of the property surveyed, described as Reserve "H" and the west 40.00 feet of Reserve "F", Stonehedge Second Addition, an addition to Wichita, Sedgwick County, Kansas.

Existing public easements and dedications being vacated by virtue of K.S.A. 12-512(b). All being situated in the NW1/4 of Sec. 32, Twp. 26-S, R-2-E of the 6th P.M., Sedgwick County, Kansas.

Baughman Company, P.A.

Michael G. Conrey, Surveyor

Know all men by these presents that we, the undersigned, have caused the land in the surveyors certificate to be platted into Lots, a Block, and a Reserve, to be known as "STONEHEDGE 3RD ADDITION", Wichita, Sedgwick County, Kansas. The utility easements are hereby granted as indicated for the construction and maintenance of all public utilities. The drainage easements are hereby granted as indicated for drainage purposes. Reserve "A" is hereby reserved for landscaping, open space, lakes, berms, gazebos, drainage purposes, retaining walls, access and circulation drives, parking stalls, and utilities as confined to easements. Reserve "A" shall be owned and maintained by the owner of Lot 1, Block A. Access controls shall be as depicted on the face of the plat and are hereby granted to the City of Wichita, Kansas. The Minimum Building Pad Elevations for the lowest opening to the structures shall be as indicated on the face of the plat.

Stonehedge, LLC, a Kansas limited liability company

Thomas W. Boyd, Managing Member

State of Kansas) SS The foregoing instrument acknowledged before me, this day of 2004, by Thomas W. Boyd, Managing Member of Stonehedge, LLC, a Kansas limited liability company, on behalf of the limited liability company.

My App't. Exp. _____, Notary Public

We, the undersigned holders of a mortgage on the above described property, do hereby consent to this plat of "STONEHEDGE 3RD ADDITION", Wichita, Sedgwick County, Kansas.

Southwest National Bank

State of Kansas) SS The foregoing instrument acknowledged before me, this day of 2004, by _____ of Southwest National Bank, on behalf of the bank.

My App't. Exp. _____, Notary Public

This plat of "STONEHEDGE 3RD ADDITION", Wichita, Sedgwick County, Kansas has been submitted to and approved by the Wichita-Sedgwick County Metropolitan Area Planning Commission, Wichita, Kansas.

Dated this day of 2004, Wichita-Sedgwick County Metropolitan Area Planning Commission

Ronald L. Marnell, Chair

John L. Schlegel, Secretary

This plat approved and all dedications shown hereon accepted by the City Council of the City of Wichita, Kansas, this day of 2004.

Carlos Mayans, Mayor

Pat Graves, City Clerk

Reviewed in accordance with K.S.A. 58-2005 on this day of 2004.

Tricia L. Robello, L.S. #1246
Deputy County Surveyor
Sedgwick County, Kansas

Entered on transfer record this day of 2004.

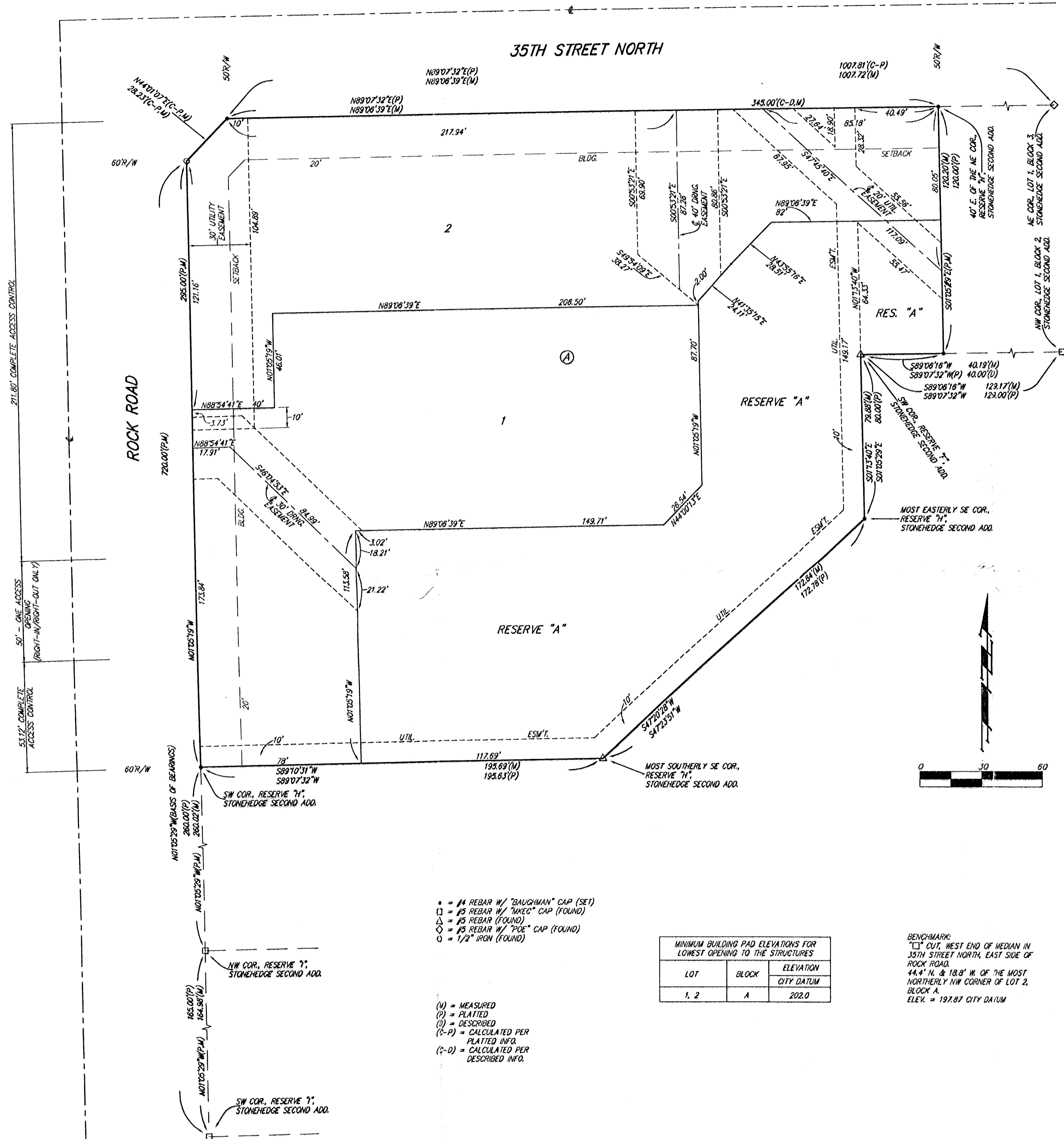
Don Brace, County Clerk

State of Kansas) SS This is to certify that this plat has been filed for record in the office of the Register of Deeds, this day of 2004 at o'clock M; and is duly recorded.

Bill Meek, Register of Deeds

Linda Kizzire, Deputy

STONEHEDGE 3RD ADDITION WICHITA, SEDGWICK COUNTY, KANSAS



- = #4 REBAR W/ "BAUGHMAN" CAP (SET)
 - = #6 REBAR W/ "SKEW" CAP (FOUND)
 - △ = #8 REBAR (FOUND)
 - = #8 REBAR W/ "PDE" CAP (FOUND)
 - = 1/2" IRON (FOUND)
- (M) = MEASURED
(P) = PLATTED
(D) = DESCRIBED
(C-P) = CALCULATED PER PLATTED INFO.
(C-D) = CALCULATED PER DESCRIBED INFO.

MINIMUM BUILDING PAD ELEVATIONS FOR LOWEST OPENING TO THE STRUCTURES		
LOT	BLOCK	ELEVATION CITY DATUM
1, 2	A	202.0

BENCHMARK: "C" CUT, WEST END OF MEDIAN IN 35TH STREET NORTH, EAST SIDE OF ROCK ROAD. 44'-4" N. & 18'-8" W. OF THE MOST NORTHEASTLY CORNER OF LOT 2, BLOCK A. ELEV. = 197.87 CITY DATUM

NOTE: A DRAINAGE PLAN HAS BEEN DEVELOPED FOR THIS SUBDIVISION AND IS ON FILE WITH THE CITY OF WICHITA, KANSAS. DRAINAGE INTENT SHALL REMAIN AS DEPICTED OR AS MODIFIED WITH THE APPROVAL OF THE CITY ENGINEER OF THE CITY OF WICHITA, KANSAS. NO OBSTRUCTIONS WHICH IMPED THE FLOW OF THIS DRAINAGE PLAN SHALL BE ALLOWED.

State of Kansas) SS We, Baughman Company, P.A., Surveyors in Sedgwick County and state do hereby certify that we have surveyed and platted "STONEHEDGE 3RD ADDITION", Wichita, Sedgwick County, Kansas and that the accompanying plat is a true and correct exhibit of the property surveyed, described as Reserve "A" and the west 40.00 feet of Reserve "B", Stonehedge Second Addition, an addition to Wichita, Sedgwick County, Kansas.

Existing public easements and dedications being vacated by virtue of K.S.A. 12-512(b). All being situated in the NW 1/4 of Sec. 32, Twp. 26-S, R-2-E of the 6th P.M., Sedgwick County, Kansas.

Baughman Company, P.A.

Michael D. Conroy, Surveyor
Michael & Conroy

Know all men by these presents that we, the undersigned, have caused the land in the surveyors certificate to be platted into Lots, a Block, and a Reserve, to be known as "STONEHEDGE 3RD ADDITION", Wichita, Sedgwick County, Kansas. The utility easements are hereby granted as indicated for the construction and maintenance of all public utilities. The drainage easements are hereby granted as indicated for drainage purposes. Reserve "A" is hereby reserved for landscaping, open space, lakes, berms, gazebos, drainage purposes, retaining walls, access and circulation drives, parking stalls, and utilities as confined to easements. Reserve "A" shall be owned and maintained by the owner of Lot 1, Block A. Access controls shall be as depicted on the face of the plat and are hereby granted to the City of Wichita, Kansas. The Minimum Building Pad Elevations for the lowest opening to the structures shall be as indicated on the face of the plat.

Stonehedge, LLC, a Kansas limited liability company

Thomas W. Boyd, Managing Member

State of Kansas) SS The foregoing instrument acknowledged before me, this 5th day of March, 2004, by Thomas W. Boyd, Managing Member of Stonehedge, LLC, a Kansas limited liability company, on behalf of the limited liability company.

Carol M. Schulze, Notary Public
My App't. Exp. 05-05-05

We, the undersigned holders of a mortgage on the above described property, do hereby consent to this plat of "STONEHEDGE 3RD ADDITION", Wichita, Sedgwick County, Kansas.

Southwest National Bank

Tim McGaughey, EVP

State of Kansas) SS The foregoing instrument acknowledged before me, this 5th day of March, 2004, by Tim McGaughey, Exec. Vice President of Southwest National Bank, on behalf of the bank.

Carol M. Schulze, Notary Public
My App't. Exp. 05-05-05

This plat of "STONEHEDGE 3RD ADDITION", Wichita, Sedgwick County, Kansas has been submitted to and approved by the Wichita-Sedgwick County Metropolitan Area Planning Commission, Wichita, Kansas.

Dated this 3rd day of March, 2004, Wichita-Sedgwick County Metropolitan Area Planning Commission

Ronald L. Marnell, Chair

John L. Schlegel, Secretary

This plat approved and all dedications shown hereon accepted by the City Council of the City of Wichita, Kansas, this 3rd day of March, 2004.

Carlos Mayans, Mayor

Pat Graves, City Clerk

Reviewed in accordance with K.S.A. 58-2005 on this 3rd day of March, 2004.

Tricia L. Robello, L.S. #1246, Deputy County Surveyor, Sedgwick County, Kansas

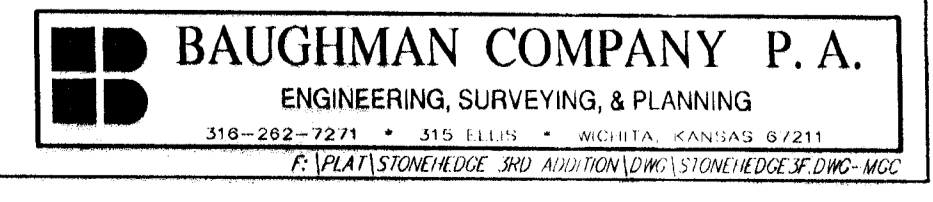
Entered on transfer record this 3rd day of March, 2004.

Don Brace, County Clerk

State of Kansas) SS This is to certify that this plat has been filed for record in the office of the Register of Deeds, this 3rd day of March, 2004 at 10:00 o'clock A.M. and is duly recorded.

Bill Meek, Register of Deeds

Linda Kizzire, Deputy



Closure

CLOSURE - STONEHEDGE 3RD ADDITION

PT 01	North: 4954.5420	East : 6578.5406
Line	Course: N 01-05-19 W	Length: 295.00
PT 02	North: 5249.4888	East : 6572.9360
Line	Course: N 44-01-07 E	Length: 28.23
PT 03	North: 5269.7894	East : 6592.5528
Line	Course: N 89-06-39 E	Length: 345.00
PT 04	North: 5275.1432	East : 6937.5113
Line	Course: S 01-05-19 E	Length: 120.20
PT 05	North: 5154.9649	East : 6939.7949
Line	Course: S 89-06-16 W	Length: 40.19
PT 06	North: 5154.3367	East : 6899.6098
Line	Course: S 01-13-40 E	Length: 79.88
PT 07	North: 5074.4751	East : 6901.3214
Line	Course: S 47-20-28 W	Length: 172.84
PT 08	North: 4957.3531	East : 6774.2147
Line	Course: S 89-10-31 W	Length: 195.69
PT 01	North: 4954.5364	East : 6578.5450