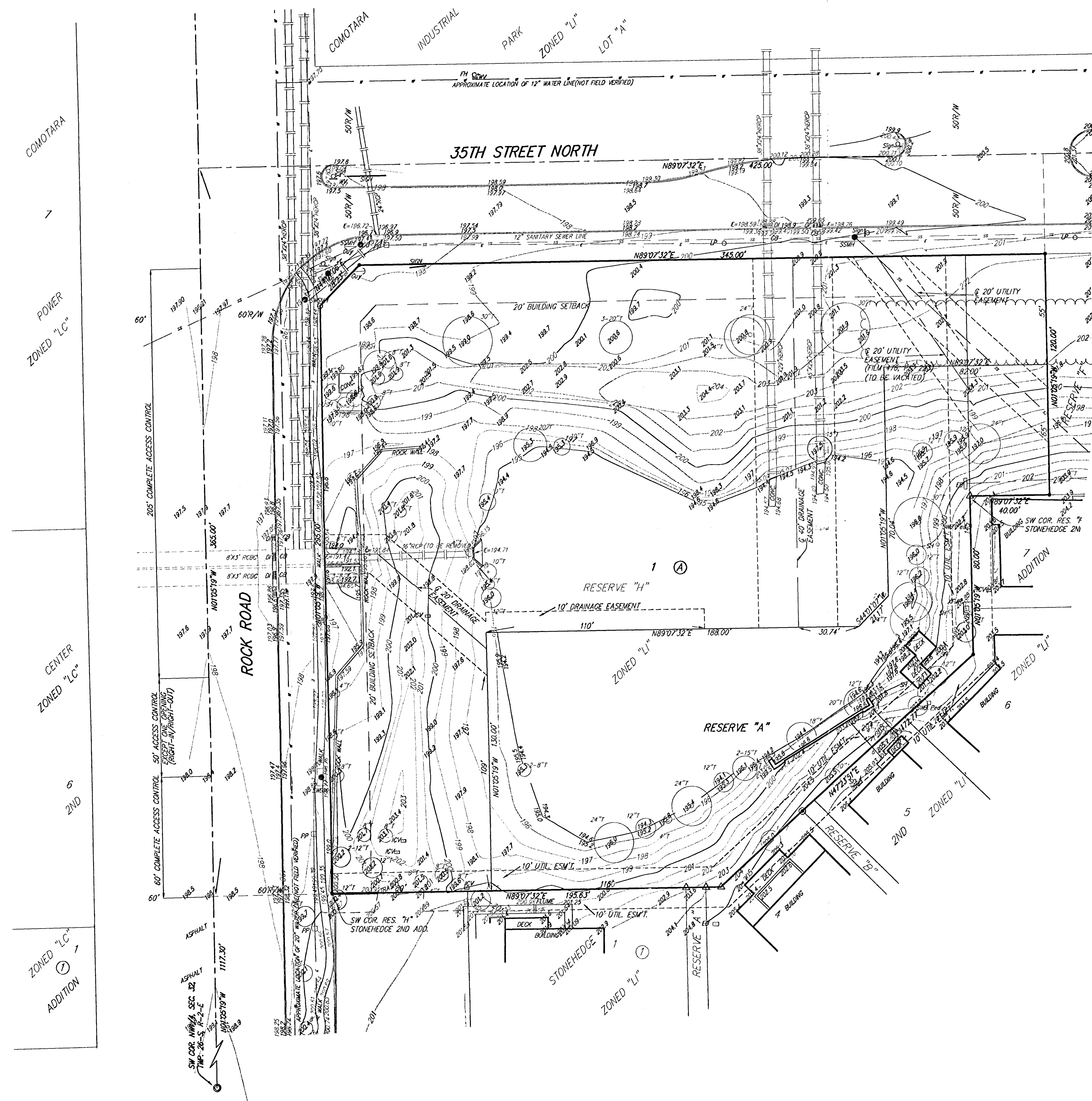


PRELIMINARY FINAL  
**STONEHEDGE 3RD ADDITION**  
 WICHITA, SEDGWICK COUNTY, KANSAS



0 30 60

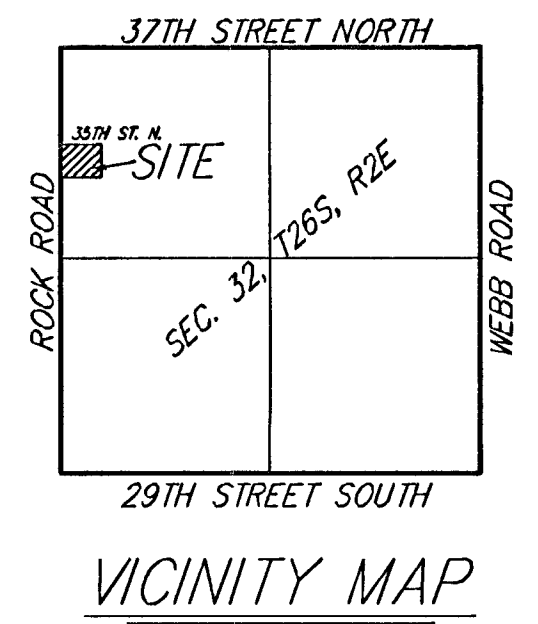
DATE OF PREPARATION: 11 AUGUST 2003  
 DATE OF TOPOGRAPHY: 21 JULY 2003  
 CONTOUR INTERVALS = 1 FOOT

**OWNER/DEVELOPER:**  
 Stonehedge, L.L.C.  
 Attn: Tom Boyd  
 128 S. Dellrose  
 Wichita, Kansas 67218  
 316-686-2292

**LEGAL DESCRIPTION:**  
 Reserve "H", together with the west 40.00 feet of Reserve "I", all as platted in Stonehedge Second Addition, an addition to Wichita, Sedgwick County, Kansas

**BENCHMARK:**  
 "□" Cut West End of Median in 35th St. North, East side of Rock Road.  
 Elev. = 197.87 City Datum

- CB = Catch Basin
- CO = Cleanout
- DI = Drop Inlet
- EB = Electric Box
- FH = Fire Hydrant
- GA = Guy Anchor
- ICV = Irrigation Control Valve - Valve Box
- LP = Light Pole
- EM = Electric Meter
- PP = Power Pole
- SD = Satellite Dish
- SH = Sprinkler Head
- SP = Sign
- SSMH = Sanitary Sewer Manhole
- SMWH = Southwestern Bell Manhole
- SWP = Southwestern Bell Pedestal
- SSWH = Stormwater Sewer Manhole
- T = Tree
- WM = Water Meter
- WV = Water Valve
- TR = Transformer



RESERVE "A" IS RESERVED FOR LANDSCAPING, BERMS, GAZEBOS, DRAINAGE PURPOSES, AND UTILITIES AS CONFINED TO EASEMENTS.