

VICINITY MAP

BENCH MARKS

- BM #1 City Disc NW corner RCBG West side of Shade and Winterset at SW corner of inlet. Elev. = 127.21' City Datum 1314.61' NGVD
- BM #2 Square cut NW corner S. side Shade at P.C. of Lot 1, Blk. 1, Farmington Square 2nd Add. Elev. = 145.06' City Datum 1333.46' NGVD

LEGAL DESCRIPTION

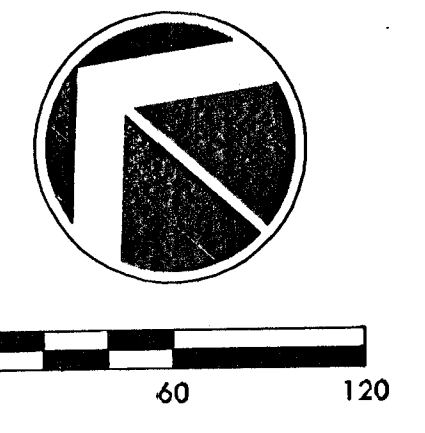
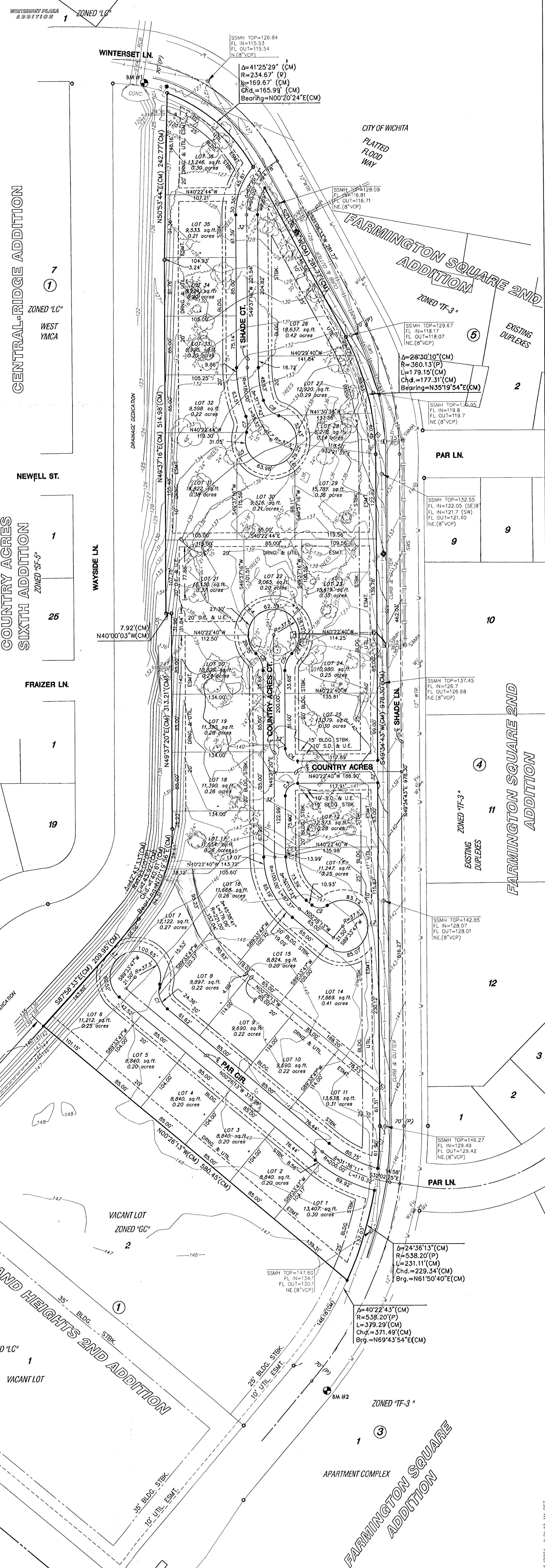
A replat of a portion of land lying in "Woodland Heights 2nd Addition", an addition to Wichita, Kansas; A replat of all of Lot 2, said addition, EXCEPT West 260 feet thereof, TOGETHER WITH; A replat of Lots 3 and 4, Block 1, of said addition.

NOTES

1. ZONING: Existing/Proposed Multi-Family District MF-18 Overlay - C.U.P. DP-59
2. Plat Area = 14.58 Ac.
3. Lot total = 36
4. New Street = 1,600 L.F. - 32' R/W
5. Avg. Lot Area = 0.27 Ac. or 11,380 sq. ft.
6. Proposed Housing Units = 69
7. All easements encircling the streets are platted 15 foot street drainage, and utility easements, except where otherwise noted.
8. No lot shall have direct access to Shade Lane.

LEGEND

	CONIFEROUS TREE & DIAMETER		STORM SEWER PIPE
	DECIDUOUS TREE & DIAMETER		WATER LINE
	BUSH		SANITARY SEWER LINE
	EDGE OF TREES		GAS LINE
	FENCE		TELEPHONE LINE
	SIGN		UNDERGROUND ELECTRIC LINE
	GAS METER		OVERHEAD TELEPHONE
	SANITARY SEWER MANHOLE		OVERHEAD ELECTRIC
	LIGHT POLE		PROPERTY CORNER FOUND
	POWER POLE AND ANCHOR		BENCHMARK
	FIRE HYDRANT		
	WATER VALVE		
	WATER METER		
	TELEPHONE RISER		
	INLET		



PRELIMINARY PLAT SHADY RIDGE ADDITION

OWNER/DEVELOPER: THE CREW, a Kansas General Partnership, 7328 E. Elm Ct. Wichita, KS 67206 316-688-5560 DATE: MARCH 15th, 2004



111 N. 28th Street
 Wichita, KS 67204
 316-261-9200
 3/15/2004 8:51:12 AM CST