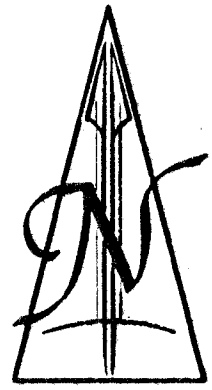
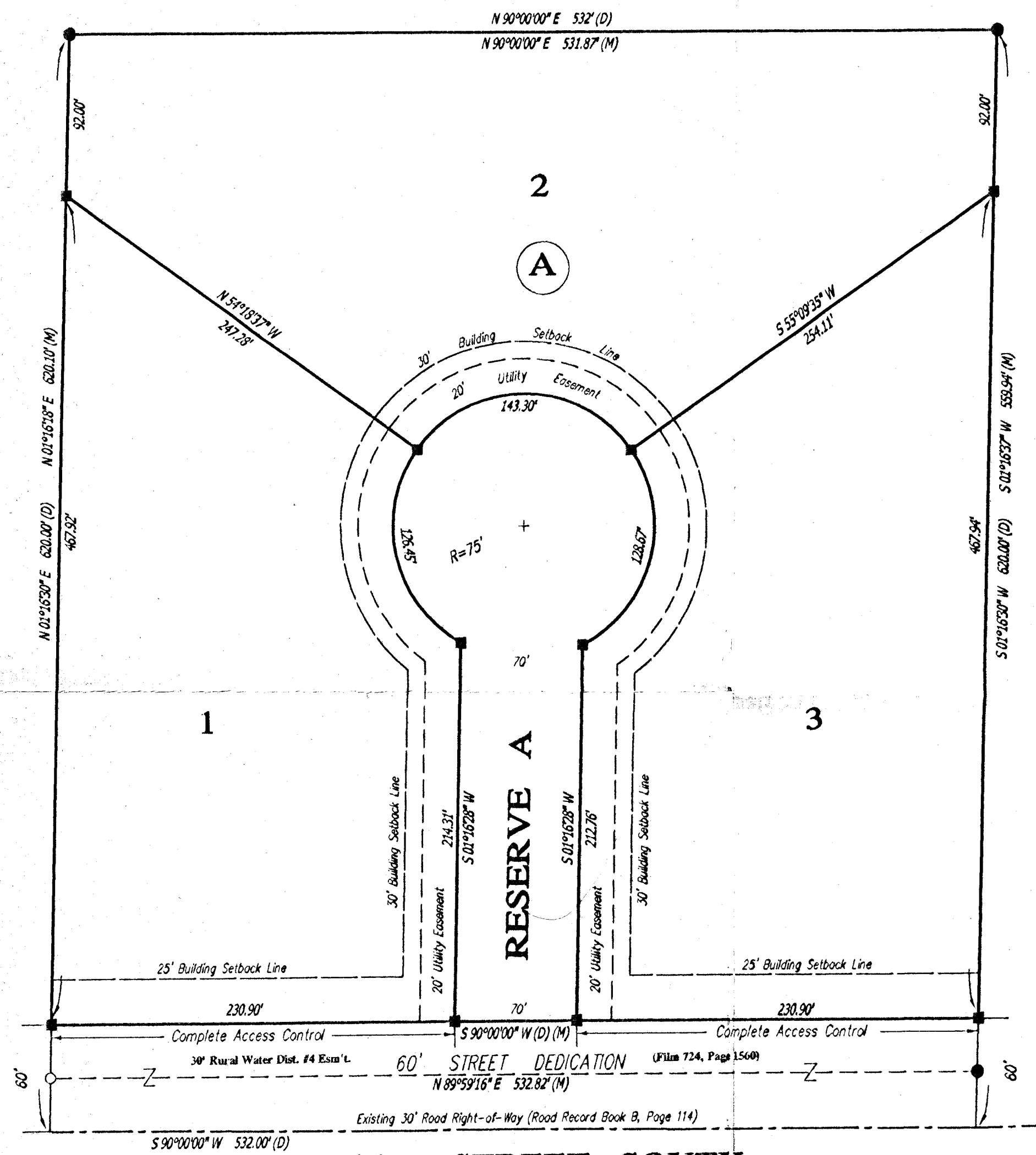


FINAL PLAT OF
"AFTON LAKESIDE ESTATES"
 SEDGWICK COUNTY, KANSAS
 IN THE SOUTHWEST QUARTER OF SECTION 14
 TOWNSHIP 28 SOUTH, RANGE 3 WEST OF THE SIXTH P.M.



SCALE: 1" = 60'

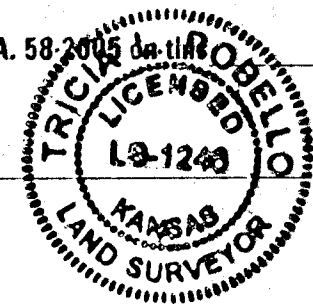
- = #5 Rebar (no ID) Found
- = #4 Rebar with ID Cap "TTL SI CLS 22" Found
- = #4 Rebar with ID Cap "TTL SI CLS 22" Found
- (D) = Described
- (M) = Measured
- Bearing Basis Assumed



47TH STREET SOUTH

Reviewed in accordance with K.S.A. 58-2015 on this _____ day of _____, 2005.

Tricia L. Robello, LS#1248
 Deputy County Surveyor
 Sedgwick County, Kansas



TERRA TECH
 LAND SURVEYING / INC.

22200 W. 65th St. S.
 Viola, Kansas 67149
 (316) 794-2883 / 794-3273
 Fax (316) 794-3274

State of Kansas)
 Sedgwick County) ss

Terra Tech Land Surveying, Inc., a corporation registered and authorized to practice Land Surveying in the State of Kansas, hereby certifies that it has surveyed and platted "AFTON LAKESIDE ESTATES", Sedgwick County, Kansas, and the accompanying plat is a true and correct exhibit of such survey described as:

That part of the Southwest Quarter of Section 14, Township 28 South, Range 3 West of the Sixth Principal Meridian, Sedgwick County, Kansas, described as: Beginning at a point on the South line of said Southwest Quarter at an assumed bearing of North 90°00'00" East, a distance of 660 feet from the Southwest corner of said Southwest Quarter; thence North 90°00'00" East, a distance of 532 feet; thence North 1°16'30" East, parallel with the West line of said Southwest Quarter, a distance of 820.00 feet; thence South 90°00'00" West, a distance of 532 feet; thence South 1°16'30" West, a distance of 620.00 feet to the Point of Beginning. Said tract contains 7.8 acres, more or less, and is subject to any agreements, rights-of-way, easements, and restrictions of record.

TERRA TECH LAND SURVEYING, INC.

Michele Webster
 Michele Webster, S 4958 LS #958 Date 10-25-05

Know all men by these presents that the undersigned, owners of the land described in the Surveyor's Certificate, have caused the same to be surveyed and platted into Lots, a Block, a Reserve and a Street, to be known as "AFTON LAKESIDE ESTATES", Sedgwick County, Kansas. The utility easement as shown hereon is hereby granted for the construction and maintenance of all public utilities. The Street is hereby dedicated to and for the use of the public. Reserve A is hereby reserved for a private drive, open space, landscaping, and drainage purposes. Reserve A shall be owned and maintained by the owners of Lots 1, 2, and 3, Block A, "AFTON LAKESIDE ESTATES", and said Lots shall have access rights to 47th Street South, by way of said Reserve A. Access controls shall be as depicted on the face of the plat and are hereby granted to the appropriate governing body. A drainage plan has been developed for this plat and all drainage easements, rights-of-way, or reserves shall remain at established grades or as modified with the approval of the applicable City or County Engineer, and unobstructed to allow for the conveyance of stormwater.

Bob Edward Copeland *Tammy Copeland*
 Bob Edward Copeland Tammy Copeland

State of Kansas)
 Sedgwick County) ss

This instrument was acknowledged before me this 20th day of October, 2005, by Bob Edward Copeland and Tammy Copeland.

Annalisa Lux
 Annalisa Lux, Notary Public
 My Commission Expires: 04-08-07



This plat of "AFTON LAKESIDE ESTATES", Sedgwick County, Kansas, has been submitted to and approved by the Wichita-Sedgwick County Metropolitan Area Planning Commission, Wichita, Kansas.

Dated this _____ day of _____, 2005.

WICHITA-SEDGWICK COUNTY
 METROPOLITAN AREA PLANNING COMMISSION

_____, Chair
 Harold L. Warner, Jr.

_____, Secretary
 John L. Schlegel

State of Kansas)
 County of Sedgwick) ss

The dedications shown on the plat, if any, are hereby accepted by the Board of County Commissioners, Sedgwick County, Kansas, on _____, 2006.

(Seal)
 _____, Commission Chairman
 Ben Sciorfino

Attest: _____, County Clerk
 Don Brace

(Seal)

Entered on transfer record this _____ day of _____, 2006.

_____, County Clerk
 Don Brace

State of Kansas)
 Sedgwick County) ss

This is to certify that this instrument was filed for record in the Register of Deeds Office, at _____ o'clock _____ M., on the _____ day of _____, 2006.

_____, Register of Deeds

Bill Meek

_____, Deputy
 Tonya Buckingham