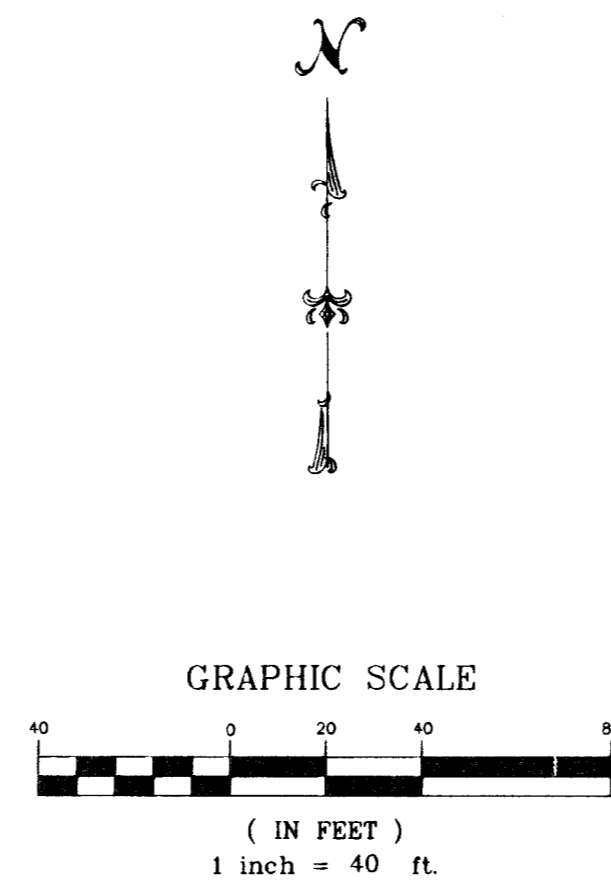
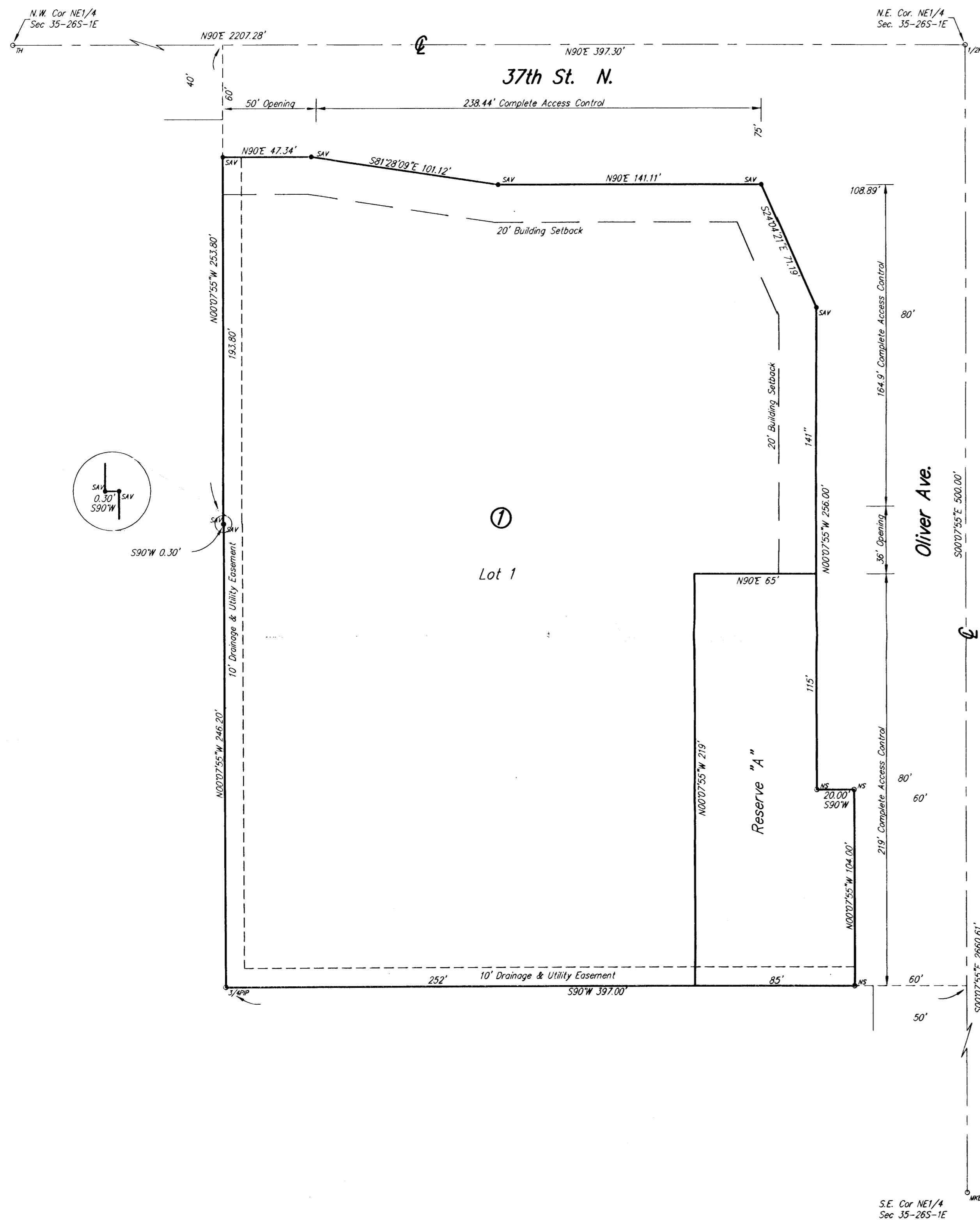


ACT PROPERTIES LLC ADDITION

Wichita, Sedgwick County, Kansas



Benchmark: City of Wichita Std Disc
 SW Cor. of Hubguard
 100' E. of Oliver on 37th St. N.
 Elevation = 1374.24 NGVD

Minimum Building Pad
 Elevation for Lowest Opening
 into Structures = 1370 NGVD

- TM = CITY OF WICHITA CONTROL THIMBLE (FOUND)
- 1/2" = 1/2" REBAR (FOUND)
- MKEC = MKEC (FOUND)
- 3/4" = 3/4" PINCHED IRON PIPE (FOUND)
- SA = 1/2" REBAR W/SAVOY CAP (SET)
- NS = NOT SET (POINT FALLS IN POND)

State of Kansas) SS
 Sedgwick County)

We, Savoy Company, P.A., Surveyors in aforesaid county and state do hereby certify that, under the supervision of the undersigned, we have surveyed and platted "ACT PROPERTIES LLC ADDITION", Wichita, Sedgwick County, Kansas and that the accompanying plat is a true and correct exhibit of the property surveyed, described as:

Parcel 1:
 The north 142.20 feet of the south 482.20 feet of the north 736 feet of the east 337 feet of the NE 1/4 of Sec. 35, Twp. 26-S, R-1-E of the 6th P.M., Sedgwick County, Kansas.

Parcel 2:
 The north 104 feet of the south 340 feet of the north 736 feet of the east 397 feet of the NE 1/4 of Sec. 35, Twp. 26-S, R-1-E of the 6th P.M., Sedgwick County, Kansas, except the north 104 feet of the west 60 feet thereof.

Parcel 3:
 The west 60 feet of the east 397 feet of the south 246.20 feet of the north 500 feet of the NE 1/4 of Sec. 35, Twp. 26-S, R-1-E of the 6th P.M., Sedgwick County, Kansas.

Parcel 4:
 Beginning at the N.E. Corner of Sec. 35, Twp. 26-S, R-1-E of the 6th P.M., Sedgwick County, Kansas; thence south, 253.8 feet along the east line of Sec. 35; thence west 397.3 feet, along a line parallel to the north line of Sec. 35; thence north 253.8 feet along a line parallel to the east line of Sec. 35 to the north line of Sec. 35; thence east 397.3 feet along said north line of Sec. 35 to the point of beginning.

All Public easements and dedications being vacated by virtue of K.S.A. 12-512(b).

Savoy Company, P.A.

Date: 31 Jan 08

Mark A. Savoy Surveyor
 Mark A. Savoy RLS #7788

Know all men by these presents that I, the undersigned, have caused the land described in the surveyors certificate to be platted into a Lot, Block and Streets to be known as "ACT PROPERTIES LLC ADDITION", Wichita, Sedgwick County, Kansas. The streets are hereby dedicated to and for the use of the public. The drainage and utility easements are hereby granted as indicated for the construction and maintenance of all public utilities and for drainage purposes. Reserve "A" is hereby reserved as indicated for drainage purposes. Reserve "A" shall be owned and maintained by the owners of Lot 1, Block 1. Access controls are hereby granted to the appropriate governing body as indicated on the face of the plat. A drainage plan has been developed for this plat and all drainage easements and rights-of-way shall remain at established grades or modified with the approval of the Engineer of the appropriate governing body, and unobstructed to allow for the conveyance of stormwater. The Minimum Building Pad elevation for Lowest Opening into Structures for Lot 1 is 1370 NGVD.

ACT Properties, LLC

President

State of Kansas) SS
 Sedgwick County)

The foregoing instrument acknowledged before me, this 1st day of February, 2008, by Jon C. Parks, President of ACT Properties, LLC, on behalf of the company.

My App't. Exp 4/22/2009 *Kimberly J. Jelle* Notary Public



This plat of "ACT PROPERTIES LLC ADDITION", Wichita, Sedgwick County, Kansas, has been submitted to and approved by the Wichita-Sedgwick County Metropolitan Area Planning Commission, Wichita, Kansas.
 Dated this _____ day of _____, 2008.

Wichita-Sedgwick County Metropolitan Area Planning Commission

 Chair
 Harold H. Warner, Jr

 Secretary
 John L. Schlegel

This plat approved and all dedications shown hereon, are hereby accepted by the City Council of the City of Wichita, Kansas, dated this _____ day of _____, 2008.

 Mayor
 Carl Brewer

 City Clerk
 Karen Sublett

Reviewed in accordance with K.S.A. 58-2005 on this _____ day of _____, 2008.

 Deputy County Surveyor
 Sedgwick County, Kansas
 Tricia L. Robello, L.S. #1246

Entered on transfer record this _____ day of _____, 2008.

 County Clerk
 Donald Brace

State of Kansas) SS
 Sedgwick County)

This is to certify that this plat has been filed for record in the office of the Register of Deeds, this _____ day of _____, 2008, at _____ o'clock _____ M. and is duly recorded.

 Register of Deeds
 Bill Meek

 Deputy
 Tonya Buckingham



Savoy Company, P.A.
 Land Surveyors
 535 S. Emporia, Suite 104, Wichita, KS 67202
 P11 (316) 265-0005
 FAX (316) 265-0275
 www.savoyco.com