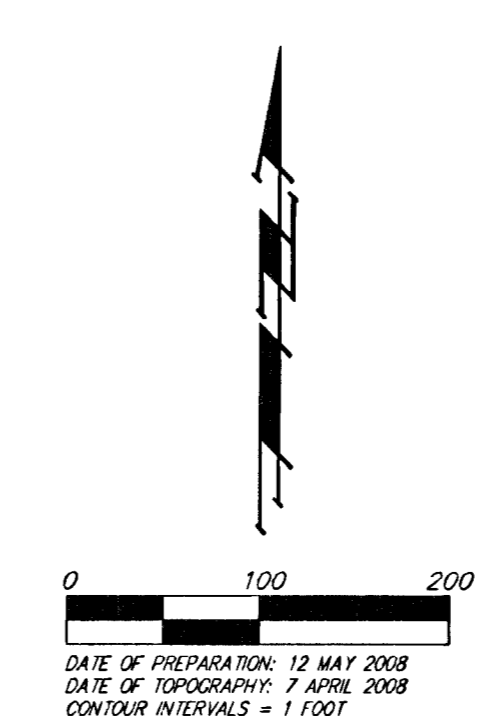
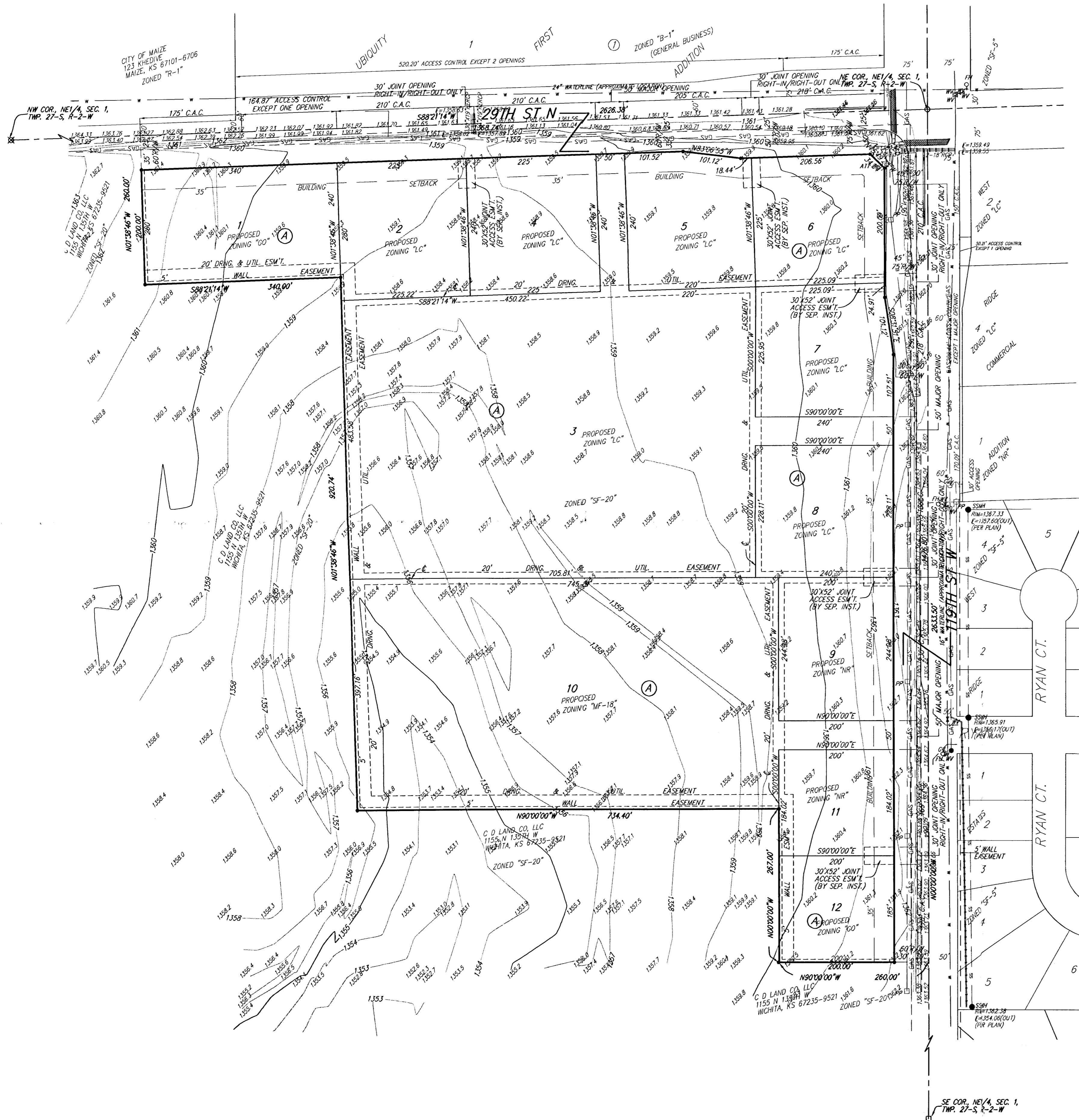


PRELIMINARY PLAT  
**ASHTON CREEK COMMERCIAL PARK**  
 WICHITA, SEDGWICK COUNTY, KANSAS



DATE OF PREPARATION: 12 MAY 2008  
 DATE OF TOPOGRAPHY: 7 APRIL 2008  
 CONTOUR INTERVALS = 1 FOOT

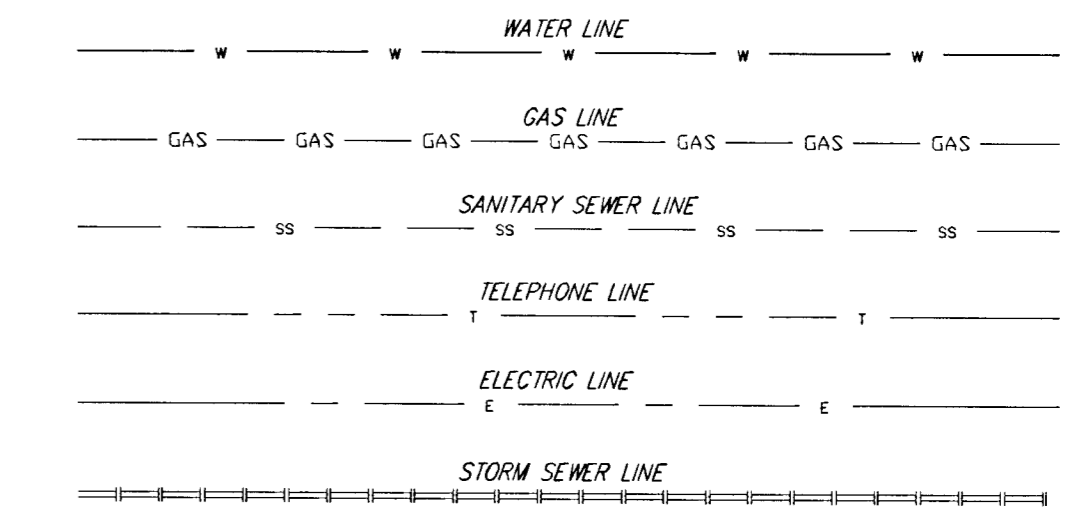
NOTE:  
 ADDITIONAL BUILDING SETBACK  
 REQUIREMENTS AND RESTRICTIONS PER  
 COMMUNITY UNIT PLAT DP-309.

- = #1 REBAR W/ "BAUGHMAN" CAP (SET)
- = #4 REBAR W/ "TILS" CAP (FOUND)
- ⊗ = 1" IRON (FOUND)
- ⊙ = 3/8" IRON (FOUND)
- = 1/2" IRON (FOUND)
- (M) = MEASURED
- (D) = DESCRIBED
- (P) = PLATTED
- (C) = CALCULATED

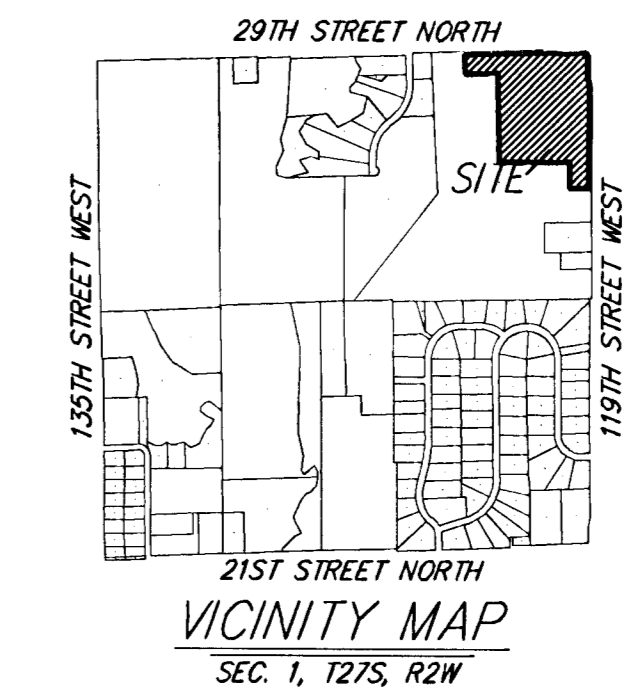
OWNER:  
 C.D. LAND CO. LLC  
 ATTN: CHRIS DUGAN  
 1155 N 135TH ST W  
 WICHITA, KS 67235-9521  
 PH: (316) 721-8575

LEGAL DESCRIPTION:  
 THAT PART OF GOVERNMENT LOTS 1 AND 2 AND THE  
 S 1/2 OF THE NE 1/4 OF SEC. 1, TWP. 27-S, R-2-W OF  
 THE 6TH P.M. SEDGWICK COUNTY, KANSAS DESCRIBED  
 AS FOLLOWS: BEGINNING AT THE NE CORNER OF SAID  
 NE 1/4; THENCE SOUTHERLY ALONG THE EAST LINE OF  
 SAID NE 1/4, 1476.80 FEET; THENCE WESTERLY  
 PERPENDICULAR TO THE EAST LINE OF SAID NE 1/4,  
 260.00 FEET; THENCE NORTHERLY PARALLEL TO THE  
 EAST LINE OF SAID NE 1/4, 287.00 FEET; THENCE  
 WESTERLY PERPENDICULAR TO THE EAST LINE OF SAID  
 NE 1/4, 734.40 FEET; THENCE NORTHERLY  
 PERPENDICULAR TO THE NORTH LINE OF SAID NE 1/4,  
 900.74 FEET TO A POINT 260.00 FEET NORMALLY  
 DISTANT SOUTH OF THE NORTH LINE OF SAID NE 1/4;  
 THENCE WESTERLY PARALLEL WITH THE NORTH LINE OF  
 SAID NE 1/4, 340.00 FEET; THENCE NORTHERLY  
 PERPENDICULAR TO THE NORTH LINE OF SAID NE 1/4,  
 260.00 FEET TO A POINT ON THE NORTH LINE OF SAID  
 NE 1/4; THENCE EASTERLY ALONG THE NORTH LINE OF  
 SAID NE 1/4, 1368.74 FEET TO THE POINT OF  
 BEGINNING, ALL BEING SUBJECT TO ROAD  
 RIGHTS-OF-WAY OF RECORD.

BENCHMARK:  
 119TH ST. N. & 29TH ST. N. - CITY OF WICHITA  
 BENCHMARK DISC. AT NW CORNER OF  
 INTERSECTION,  
 43.82 FEET NW OF SECTION COR. IRON,  
 51.0 FEET WEST OF FACE OF POWER POLE,  
 48.70 FEET SOUTH OF STEEL FENCE POST.  
 ELEV. = 1360.93 NGVD29



- CB = Catch Basin
- CO = Cleonol
- CP = Cable TV Pedestal
- DI = Drop Inlet
- DL = Detector Loop
- EB = Electric Box
- FD = Fire Hydrant
- GM = Gas Meter
- GP = Guy Pole
- GU = Guard Post (Ballard)
- GVA = Guy Anchor
- GV = Gas Valve
- HLP = High Line Pole
- ICV = Irrigation Control Valve - Valve Box
- LP = Light Pole
- MB = Mail Box
- MW = Monitoring Well
- PT = Pine Tree
- PM = Pipeline Marker
- PP = Power Pole
- RWM = Right-of-Way Marker
- SD = Schematic Dish
- SH = Sprinkler Head
- SP = Signal Pole
- SI = Sign
- SP = Stand Pipe
- SSM = Sanitary Sewer Manhole
- ATM = ATT Manhole
- ATP = ATT Pedestal
- SSM = Stormwater Sewer Manhole
- T = Tree
- TB = Traffic Box
- TM = Traffic Manhole
- TP = Telephone Pole
- WH = Closed Well
- WM = Water Meter
- WV = Water Valve
- WV = Water Vault
- WTM = Transformer
- YH = Yard Hydrant (Spigot)



TO: 1-71 FROM: 1-101  
 PUBLIC WORKS ENGINEERING  
 JULIANNE KALLEMAN

**ASHTON CREEK  
 COMMERCIAL PARK**  
 12 MAY 2008

**Baughman Company, P.A.**  
 315 Ellis St. Wichita, KS 67211 P 316.262.7271 F 316.262.0149  
 ENGINEERING | SURVEYING | PLANNING | LANDSCAPE ARCHITECTURE  
 E:\PLAT\ASHTONCREEKCOMMERCIALPARK\DWG\ASHTONCREEKCOMP.DWG.RKR