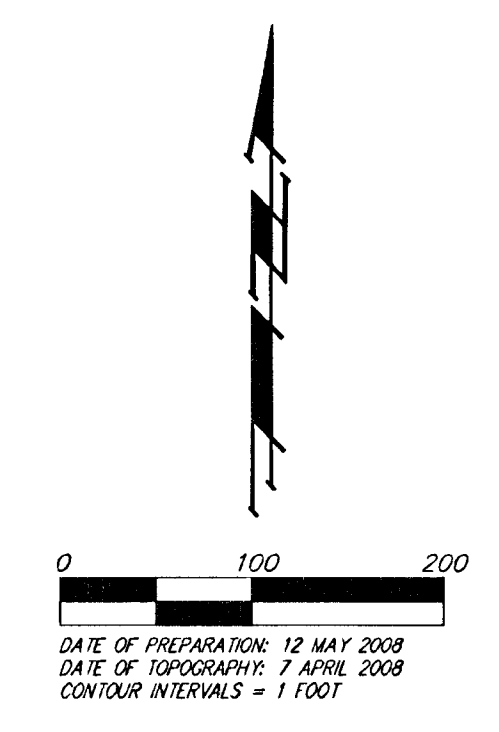
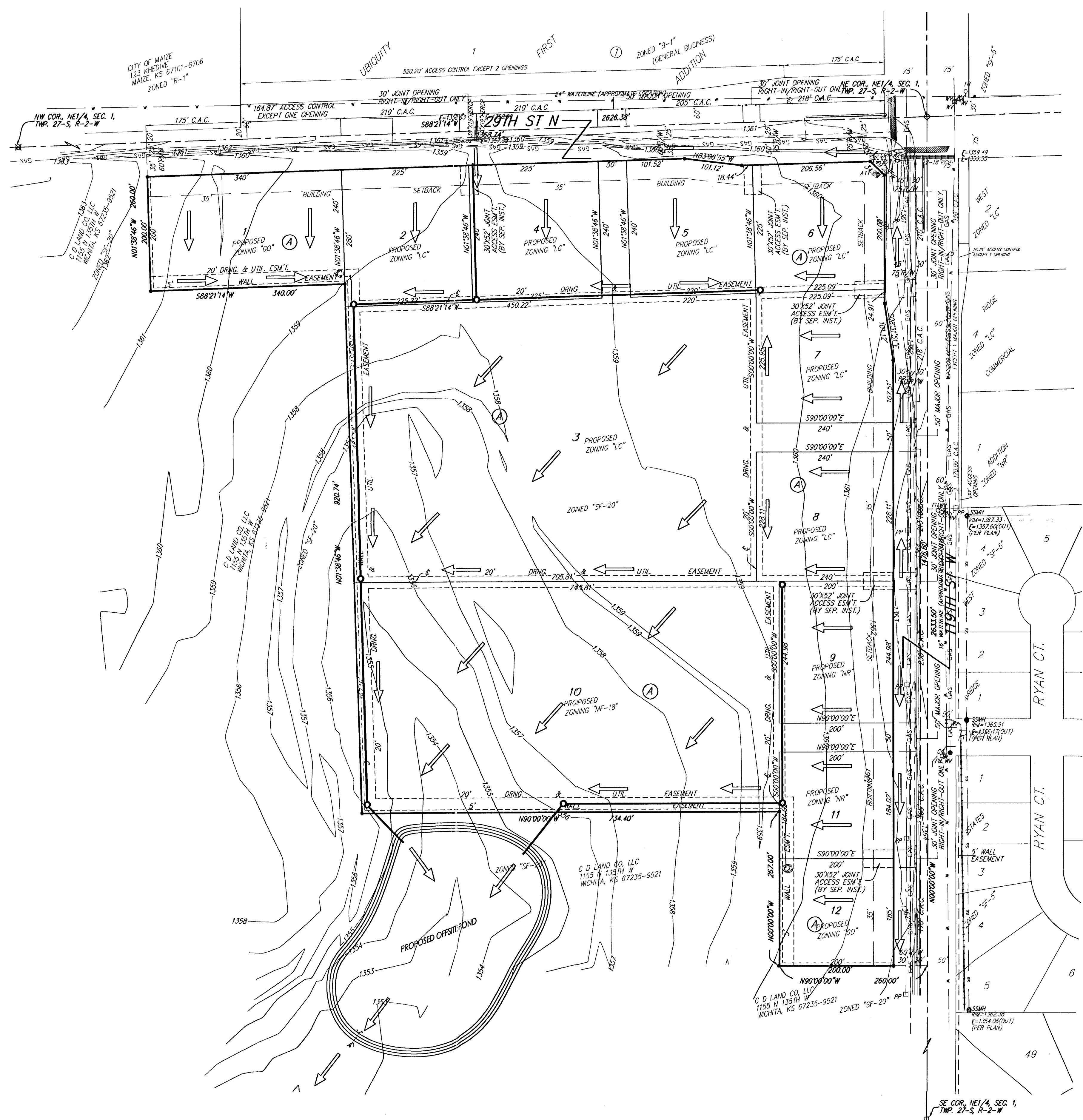


DRAINAGE CONCEPT

ASHTON CREEK COMMERCIAL PARK

WICHITA, SEDGWICK COUNTY, KANSAS



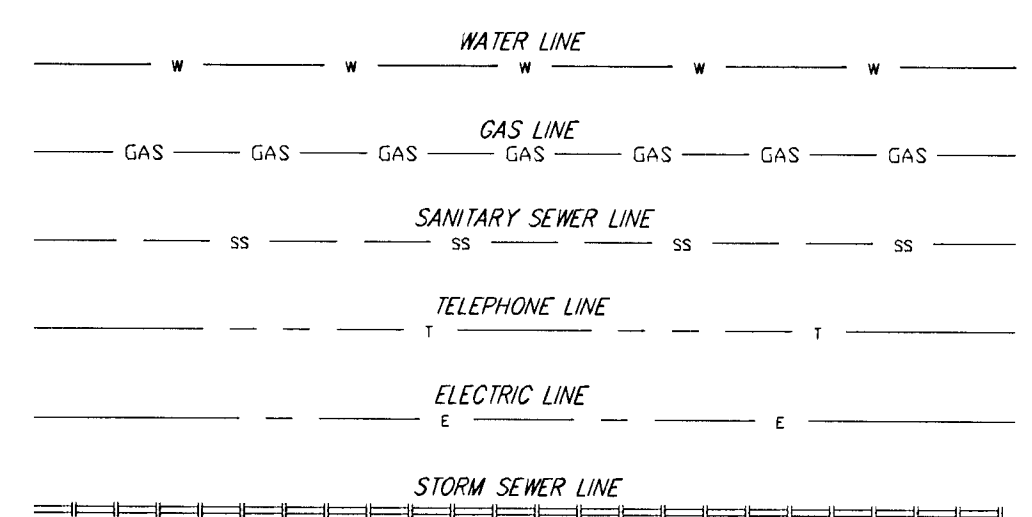
NOTE:
ADDITIONAL BUILDING SETBACK
REQUIREMENTS AND RESTRICTIONS PER
COMMUNITY UNIT PLAT DP-308.

- = #1 REBAR W/ "DAUGHMAN" CAP (SET)
- = #1 REBAR W/ "TILSI" CAP (FOUND)
- ⊗ = 1" IRON (FOUND)
- = 3/8" IRON (FOUND)
- = 1/2" IRON (FOUND)
- (M) = MEASURED
- (D) = DESCRIBED
- (P) = PLATTED
- (C) = CALCULATED

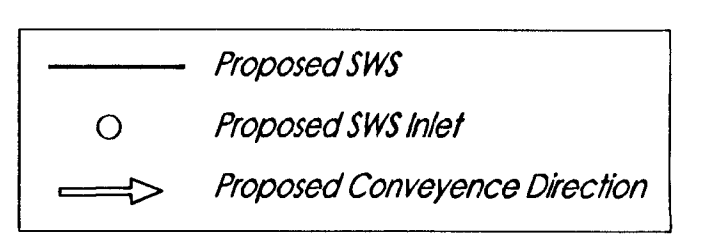
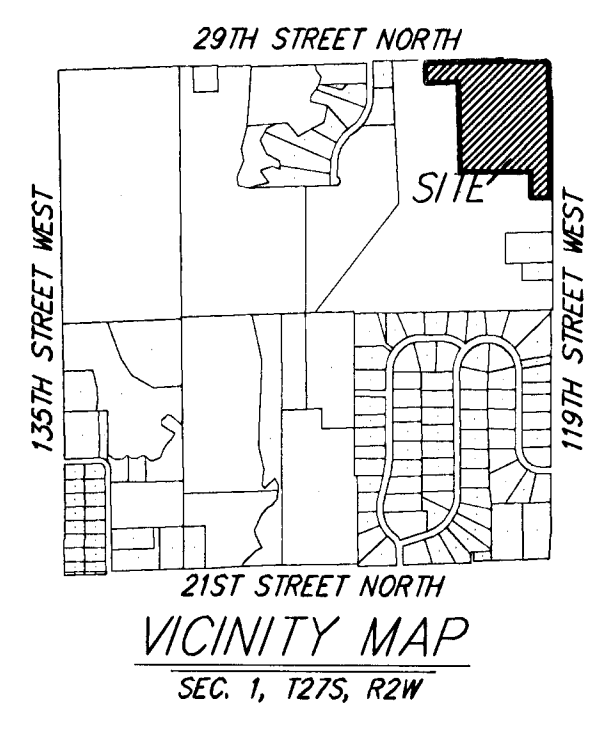
OWNER:
C.D. LAND CO., LLC
ATTN: CHRIS DUGAN
1155 N. 135TH ST. W
WICHITA, KS 67235-9521
PH: (316) 721-6575

LEGAL DESCRIPTION:
THAT PART OF GOVERNMENT LOTS 1 AND 2 AND THE
S 1/2 OF THE NE 1/4 OF SEC. 1, TWP. 27-S, R-2-W OF
THE 5TH P.M., SEDGWICK COUNTY, KANSAS DESCRIBED
AS FOLLOWS: BEGINNING AT THE NE CORNER OF SAID
NE 1/4; THENCE SOUTHERLY ALONG THE EAST LINE OF
SAID NE 1/4, 1476.80 FEET; THENCE WESTERLY
PERPENDICULAR TO THE EAST LINE OF SAID NE 1/4,
260.00 FEET; THENCE NORTHERLY PARALLEL TO THE
EAST LINE OF SAID NE 1/4, 267.00 FEET; THENCE
WESTERLY PERPENDICULAR TO THE EAST LINE OF SAID
NE 1/4, 734.40 FEET; THENCE NORTHERLY
PERPENDICULAR TO THE NORTH LINE OF SAID NE 1/4,
920.74 FEET TO A POINT 260.00 FEET NORMALLY
DISTANT SOUTH OF THE NORTH LINE OF SAID NE 1/4;
THENCE WESTERLY PARALLEL WITH THE NORTH LINE OF
SAID NE 1/4, 340.00 FEET; THENCE NORTHERLY
PERPENDICULAR TO THE NORTH LINE OF SAID NE 1/4,
280.00 FEET TO A POINT ON THE NORTH LINE OF SAID
NE 1/4; THENCE EASTERLY ALONG THE NORTH LINE OF
SAID NE 1/4, 1368.74 FEET TO THE POINT OF
BEGINNING, ALL BEING SUBJECT TO ROAD
RIGHTS-OF-WAY OF RECORD.

BENCHMARK:
119TH ST. W. & 29TH ST. N. - CITY OF WICHITA
BENCHMARK DISC. AT NW CORNER OF
INTERSECTION,
43.82 FEET NW OF SECTION COR. IRON,
5.10 FEET WEST OF FACE OF POWER POLE,
48.70 FEET SOUTH OF STEEL FENCE POST.
ELEV. = 1360.93 NGVD29



- CB = Catch Basin
- CO = Cleanout
- CP = Cable TV Pedestal
- DI = Drop Inlet
- DL = Detector Loop
- EB = Electric Box
- FH = Fire Hydrant
- GM = Gas Meter
- GP = Guy Pole
- GP = Guard Post (Ballard)
- Guy = Guy Anchor
- GV = Gas Valve
- HLP = High Line Pole
- ICV = Irrigation Control Valve - Valve Box
- LP = Light Pole
- MB = Mail Box
- MW = Monitoring Well
- PT = Pipe Tree
- PM = Pipeline Marker
- PP = Power Pole
- RAM = Right-of-Way Marker
- SD = Satellite Dish
- SH = Sprinkler Head
- SP = Signal Pole
- SP = Sign
- SP = Stand Pipe
- SM = Sanitary Sewer Manhole
- ATM = ATT Manhole
- ATM = ATT Pedestal
- SWM = Stormwater Sewer Manhole
- T = Tree
- TB = Traffic Box
- TM = Traffic Manhole
- TP = Telephone Pole
- WC = Cased Well
- WM = Water Meter
- WV = Water Valve
- WV = Water Vault
- WTR = Transformer
- YH = Yard Hydrant (Spigot)



NOTE: No FEMA SFHA exists on this property as of May 14, 2008 per FEMA FIRM Panel 330 of 700 for Sedgwick County, Kansas, effective February 2, 2007.

The proposed offsite pond will be sized and located in an offsite easement on the final Drainage Plan. The as-shown size and location are preliminary and are subject to change.

DRAINAGE CONCEPT ASHTON CREEK COMMERCIAL PARK

12 MAY 2008

Baughman Company, P.A.
315 Ellis St., Wichita, KS 67211 P 316-262-7271 F 316-262-0149
ENGINEERING | SURVEYING | PLANNING | LANDSCAPE ARCHITECTURE