

UTILITY PLAN

AUBURN HILLS 6TH ADDITION

WICHITA, SEDGWICK COUNTY, KANSAS



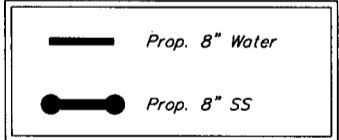
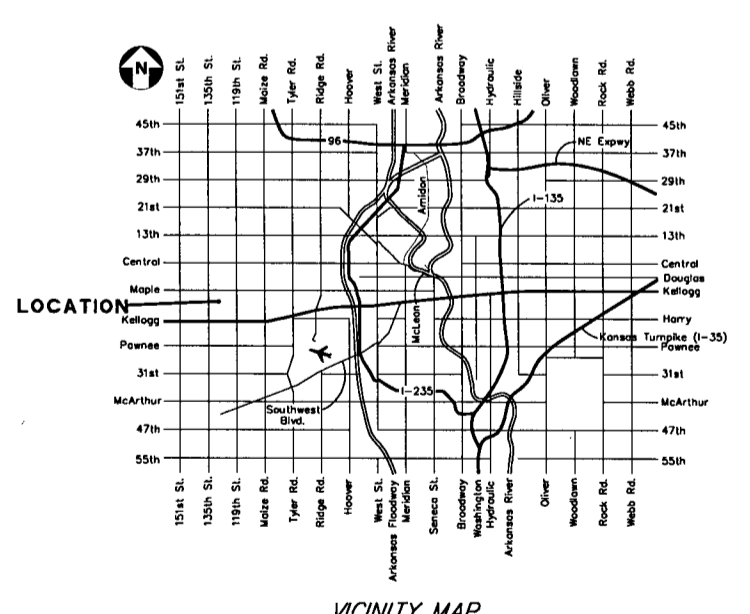
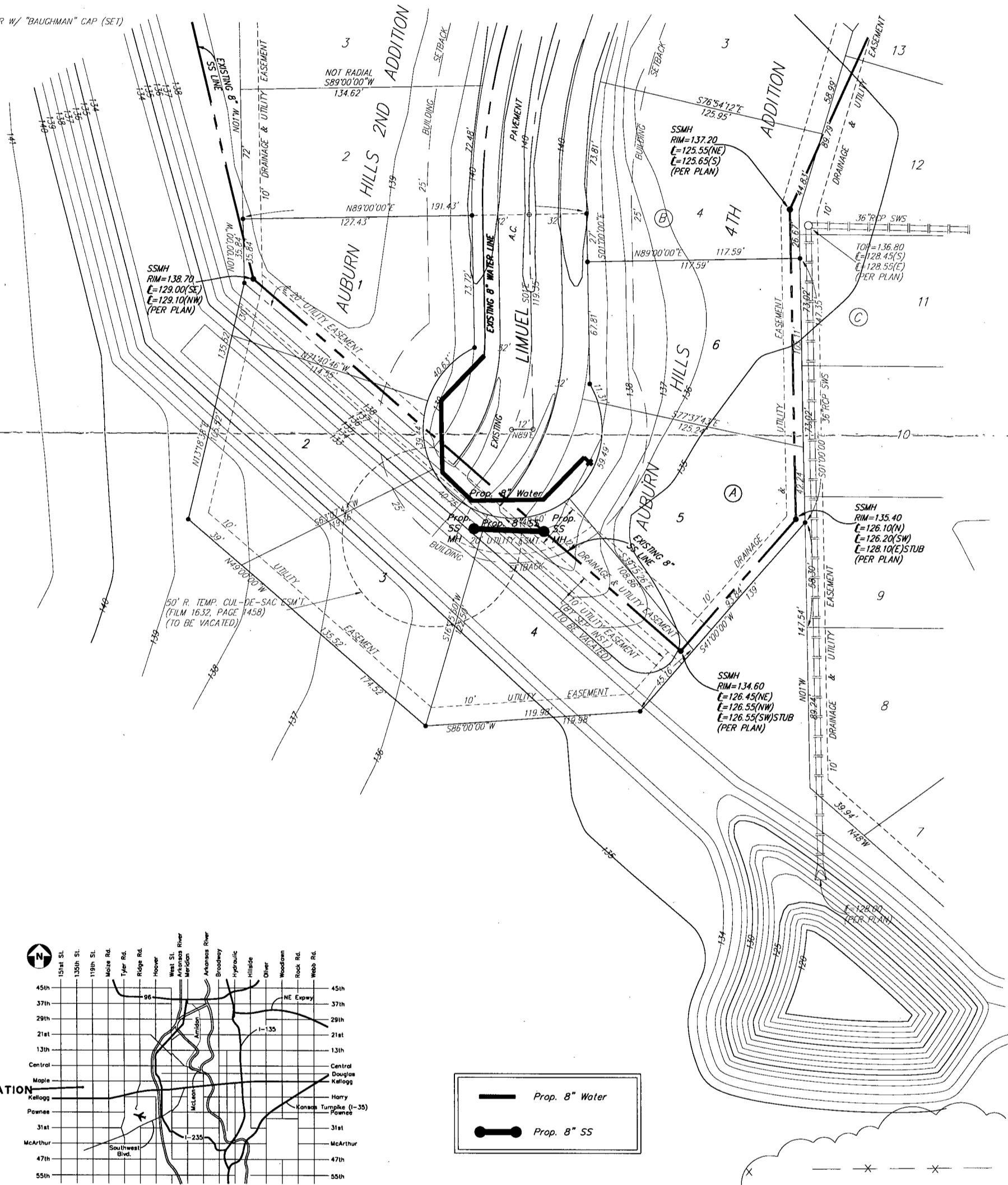
NOTE:
DRAINAGE EASEMENT GRANTED TO THE CITY OF WICHITA,
(FILM 1454, PAGE 1347), OVER THE EAST 1000 FEET OF
THE NW 1/4 OF SEC. 25, TWP. 27-S, R-2-W, EXCEPT THE
NORTH 1339.35 FEET THEREOF.

BENCH MARKS: CITY DISC - 34.3' E. & 3.3' N. OF
S.W. CORNER OF N.W. 1/4, SEC. 25,
1-27-S, R-2-W
ELEV. = 156.63 CITY DATUM
1344.03 M.S.L.

CITY DISC - 135TH ST. W. & MAPLE,
30' N. & 15' E. @ BOTH
ELEV. = 150.20 CITY DATUM
1337.60 M.S.L.

Scale: 1" = 60'

• = #4 REBAR W/ "BAUGHMAN" CAP (SET)



BAUGHMAN COMPANY P. A.
ENGINEERING, SURVEYING, & PLANNING
316-262-7271 • 315 ELLIS • WICHITA, KANSAS 67211