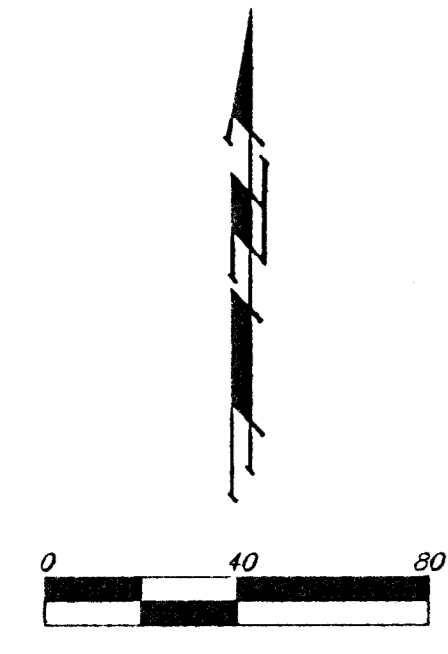


# ONE-STEP FINAL PLAT

## AUBURN HILLS 6TH ADDITION

### WICHITA, SEDGWICK COUNTY, KANSAS



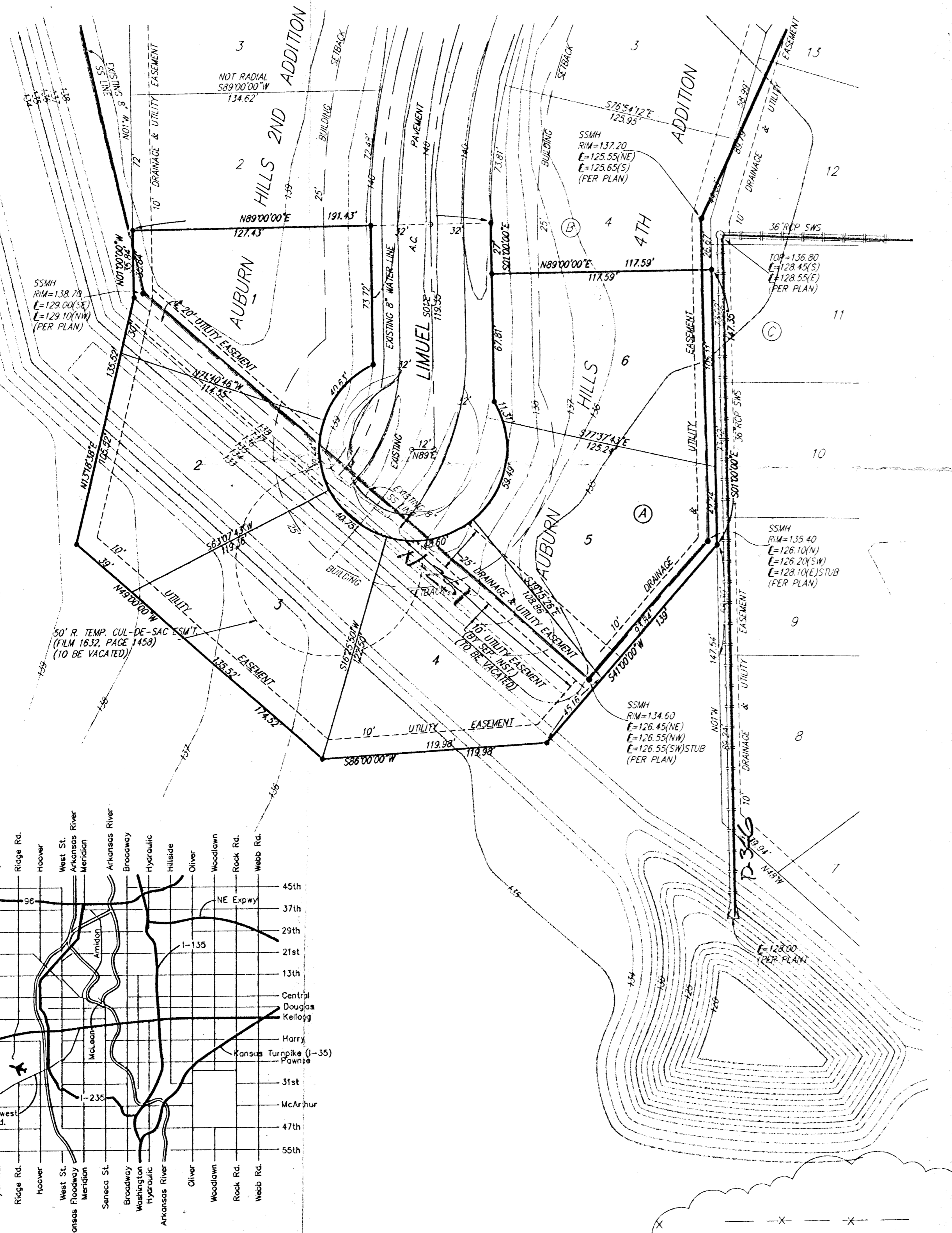
NOTE: DRAINAGE EASEMENT GRANTED TO THE CITY OF WICHITA (FILM 1454, PAGE 1347), OVER THE EAST 1000 FEET OF THE NW1/4 OF SEC. 25, TWP. 27-S, R-2-W, EXCEPT THE NORTH 1339.35 FEET THEREOF.

BENCH MARKS: CITY DISC - 34.3' E. & 3.3' N. OF S.W. CORNER OF N.W. 1/4 SEC. 25, T-27-S, R-2-W. ELEV. = 156.63 CITY DATUM 1344.03 M.S.L.

CITY DISC - 135TH ST. N. & MAPLE, 30' N. & 15' E. & BOTH. ELEV. = 150.20 CITY DATUM 1337.00 M.S.L.

MINIMUM BUILDING PAD ELEVATION FOR LOWEST OPENING TO THE STRUCTURES			
LOT	BLOCK	ELEVATION	
		CITY DATUM	MSL
1	A	140.0	1327.4
2	A	140.0	1327.4
3	A	139.0	1326.4
4	A	139.0	1326.4
5	A	138.6	1326.0

• #4 REBAR W/ BAUGHMAN CAP (SET)



State of Kansas) SS  
Sedgwick County) We, Baughman Company, P.A. Surveyors in aforesaid County and State do hereby certify that we have surveyed and platted "AUBURN HILLS 6TH ADDITION", Wichita, Sedgwick County, Kansas and that the accompanying plat is a true and correct exhibit of the property surveyed, described as follows: A replat of Lot 1, Block A, Auburn Hills 2nd Addition, Wichita, Sedgwick County, Kansas, TOGETHER with a replat of Lots 5 and 6, Block B, Auburn Hills 4th Addition, Wichita, Sedgwick County, Kansas, TOGETHER with that part of Limuel lying south of the north line of said Lot 1 as extended east, TOGETHER with a tract of land in the NW1/4 of Sec. 25, Twp. 27-S, R-2-W of the 6th P.M., Sedgwick County, Kansas, further described as follows: Beginning at the most southerly corner of Lot 6, Block B, in said Auburn Hills 4th Addition; thence N49°00'00"W along the southwest line of said Lot 6 and as extended northwesterly, and along the southwest line of Lot 1, Block A, in said Auburn Hills 2nd Addition, 322.33 feet to a deflection corner in the rear line of said Lot 1; thence S13°13'38"W, 135.52 feet; thence S49°00'00"E, 174.52 feet; thence N86°00'00"E, 119.98 feet; thence N41°00'00"E, 35.16 feet to the point of beginning.

All being situated in the NW1/4 of Sec. 25, Twp. 27-S, R-2-W of the 6th P.M., Sedgwick County, Kansas.

Existing public easements and dedications being vacated by virtue of K.S.A. 12-512(b).

Baughman Company, P.A.

\_\_\_\_\_, Surveyor  
Michael G. Conroy

Know all men by these presents that we, the undersigned, have caused the land in the surveyors certificate to be platted into Lots, a Block, and a Street to be known as "AUBURN HILLS 6TH ADDITION", Wichita, Sedgwick County, Kansas. The utility easements are hereby granted as indicated for the construction and maintenance of all public utilities. The drainage and utility easements are hereby granted as indicated for drainage purposes and for the construction and maintenance of all public utilities. The street is hereby dedicated to and for the use of the public. The Minimum Building Pad Elevations for the lowest opening to the structures shall be as indicated on the face of the plat.

Auburn Hills, Inc.

\_\_\_\_\_, President  
Jay W. Russell

State of Kansas) SS  
Sedgwick County) The foregoing instrument acknowledged before me this \_\_\_\_\_ day of \_\_\_\_\_, 1998, by Jay W. Russell, President of Auburn Hills, Inc., on behalf of the corporation.

\_\_\_\_\_, Notary Public  
My App't. Exp. \_\_\_\_\_

We the undersigned, holders of a mortgage on the above described property, do hereby consent to this plat of "AUBURN HILLS 6TH ADDITION", Wichita, Sedgwick County, Kansas.

State Bank of Colwich

State of Kansas) SS  
Sedgwick County) The foregoing instrument acknowledged before me, this \_\_\_\_\_ day of \_\_\_\_\_, 1998, by \_\_\_\_\_ of the State Bank of Colwich, on behalf of the bank.

\_\_\_\_\_, Notary Public  
My App't. Exp. \_\_\_\_\_

This plat of "AUBURN HILLS 6TH ADDITION", Wichita, Sedgwick County, Kansas, has been submitted to and approved by the Wichita-Sedgwick County Metropolitan Area Planning Commission, Wichita, Kansas.  
Dated this \_\_\_\_\_ day of \_\_\_\_\_, 1998.  
Wichita-Sedgwick County Metropolitan Area Planning Commission.

\_\_\_\_\_, Chairman  
Richard Lopez

\_\_\_\_\_, Secretary  
Marvin S. Krout

This plat approved and all dedications shown hereon accepted by the City Council of the City of Wichita, Kansas, this \_\_\_\_\_ day of \_\_\_\_\_, 1998.

\_\_\_\_\_, Mayor  
Bob Knight

\_\_\_\_\_, City Clerk  
Pat Burnett

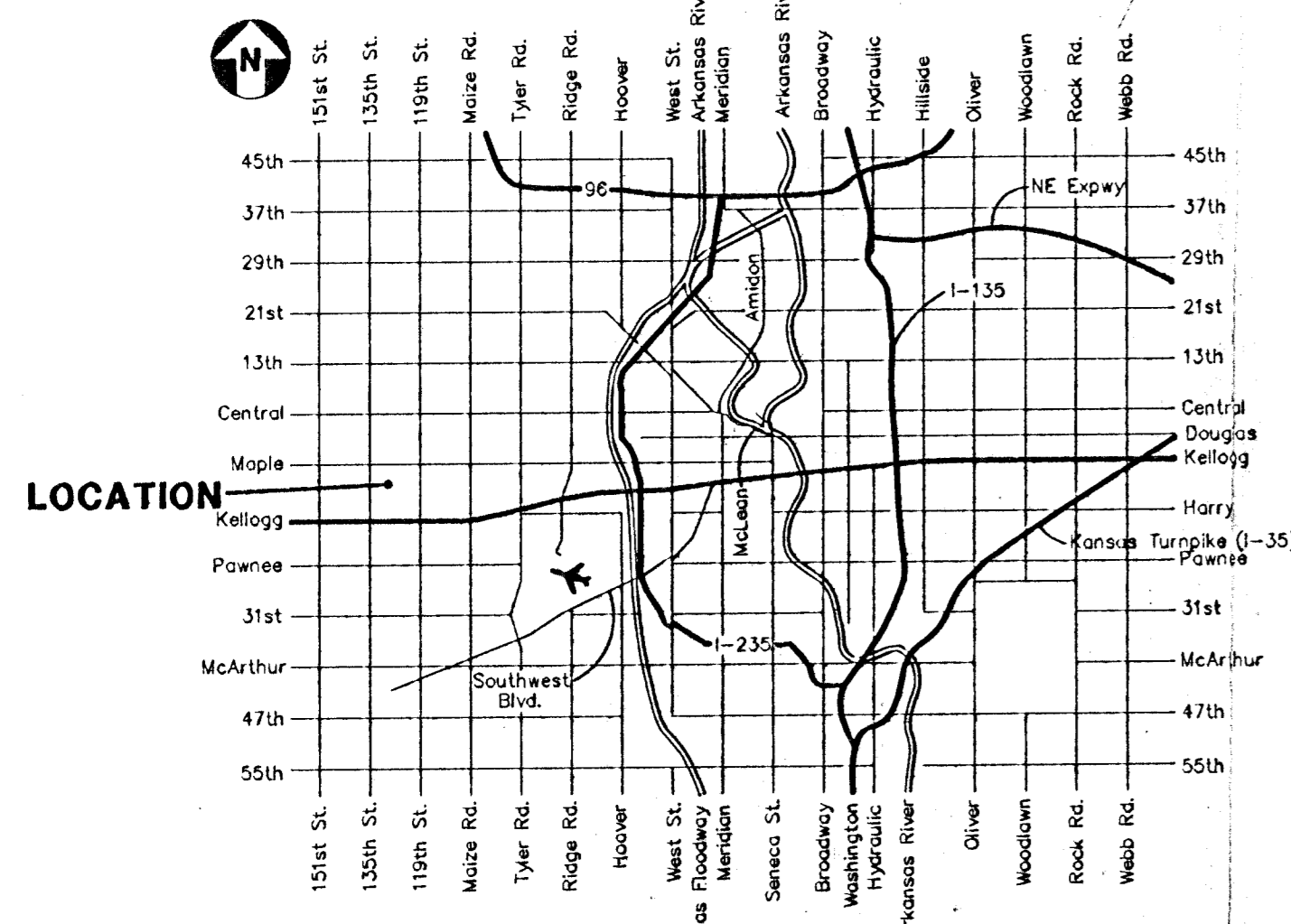
Entered on transfer record this \_\_\_\_\_ day of \_\_\_\_\_, 1998.

\_\_\_\_\_, County Clerk  
James Alford

State of Kansas) SS  
Sedgwick County) This is to certify that this plat has been filed for record in the office of the Register of Deeds, this \_\_\_\_\_ day of \_\_\_\_\_, 1998, at \_\_\_\_\_ o'clock \_\_\_\_\_ M., and is duly recorded.

\_\_\_\_\_, Register of Deeds  
Larry Consover

\_\_\_\_\_, Deputy  
Michael D. Hurtt



VICINITY MAP