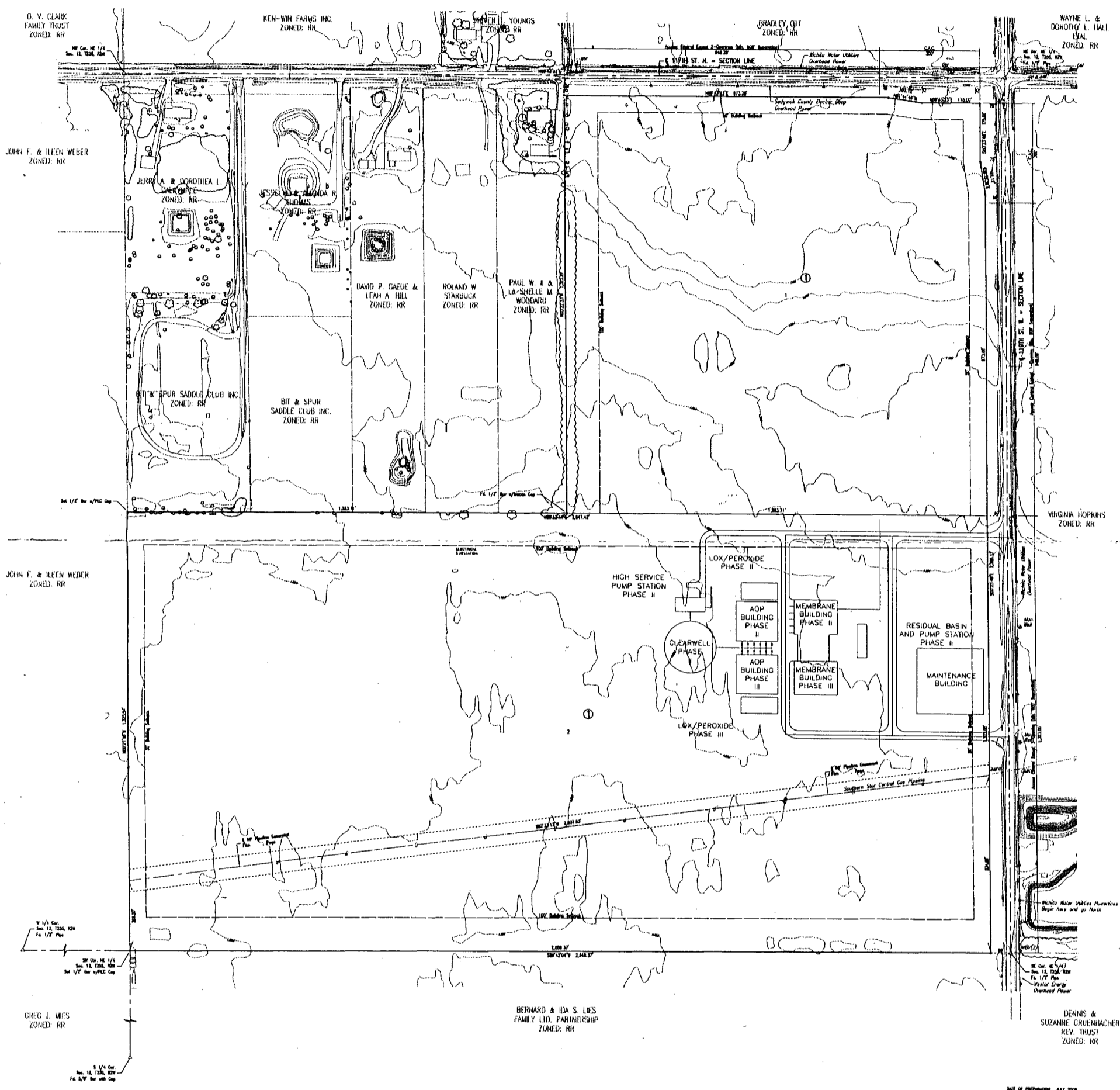


**SITE PLAN**  
**ASR TREATMENT PLANT**  
SEDGWICK COUNTY, KANSAS

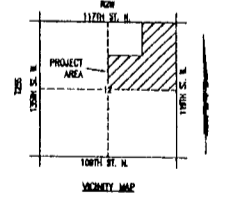
SCALE: 1" = 100'

- 1/2" RENE 8/75C COP DRAIN (STANDARD) HOLE
- △ BATTERY CORNER

NOTES:  
1. IF CORNER PUMP HOSE IS WELL HOUSE (P. 100) HOSE, USE 1/2" CORNER.



DATE OF PREPARATION: JAN 2008  
TOPOGRAPHIC NUMBER:  
OWNER: CITY OF WICHITA (DIVERS UTILITIES)  
160 S. WINE  
WICHITA, KANSAS 67202  
DESIGNER: PROFESSIONAL ENGINEERING CONSULTANTS, P.A.  
303 S. TOWNE  
WICHITA, KS 67202



Professional Engineering Consultants, P.A.  
303 S. TOWNE - WICHITA, KANSAS 67202  
TEL: 361-3801 - FAX: 361-3802