

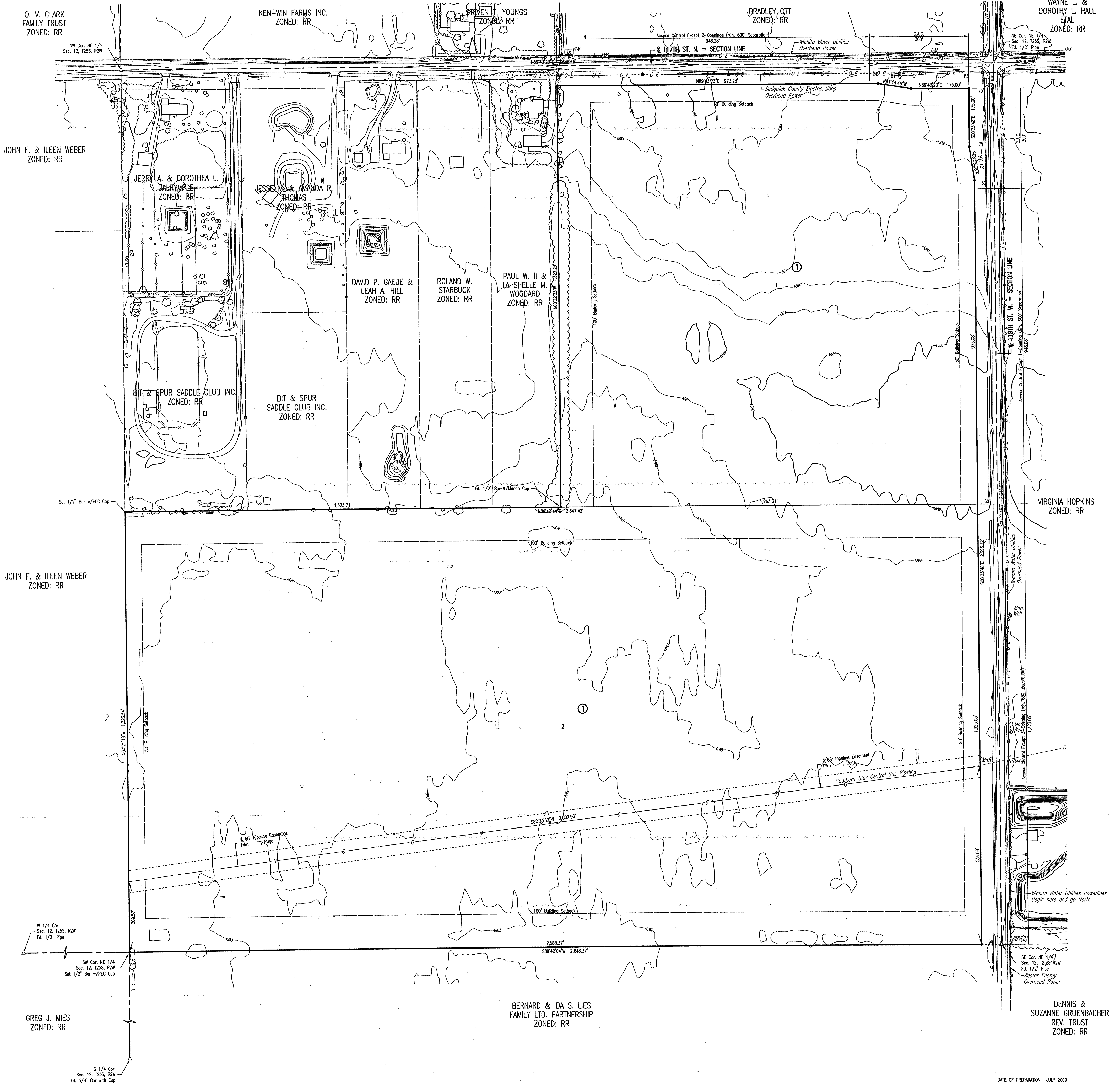
# ASR TREATMENT PLANT ADDITION

## AN ADDITION TO SEDGWICK COUNTY, KANSAS

SCALE: 1" = 100'

● = 1/2" REBAR W/PEC CAP UNLESS OTHERWISE NOTED  
 △ = SECTION CORNER

BENCHMARKS  
 \* 1/4" SE CORNER PUMP BASE AT WELL HOUSE #5 COLDEN PRAIRIE, WEST 1/4 CORNER.  
 ELEV. =



STATE OF KANSAS )  
 COUNTY OF SEDGWICK ) SS

WE, PROFESSIONAL ENGINEERING CONSULTANTS, P.A. ENGINEERS AND SURVEYORS IN APPROVED STATE AND COUNTY, DO HEREBY CERTIFY THAT ON THIS \_\_\_\_\_ DAY OF \_\_\_\_\_, 2009, WE HAVE SURVEYED AND PLATTED ASR TREATMENT PLANT ADDITION, AN ADDITION TO SEDGWICK COUNTY, KANSAS, INTO LOTS AND A BLOCK, THE SAME BEING DESCRIBED AS FOLLOWS:

THE EAST HALF OF THE NORTH HALF OF THE NORTHEAST QUARTER AND THE SOUTH HALF OF THE NORTHWEST QUARTER, SECTION 12, TOWNSHIP 25 SOUTH, RANGE 2 WEST OF THE 6TH P.M.

JAMES R. BECKETT, R.L.S. NO. 832  
 PROFESSIONAL ENGINEERING CONSULTANTS, P.A.

A DRAINAGE PLAN HAS BEEN APPROVED FOR THIS PLAT. ALL DRAINAGE EASEMENTS, RESERVES, AND RIGHTS-OF-WAY SHALL REMAIN AT ESTABLISHED GRADES AND UNOBSTRUCTED TO ALLOW FOR THE CONVEYANCE OF STORMWATER, UNLESS MODIFIED WITH THE APPROVAL OF THE COUNTY ENGINEER.

THIS ADDITION IS SUBJECT TO CONDITIONS OF THE SURFACE WATER TREATMENT PLANT, CONDITIONAL USE PLAN COM 2009-11.

ACCESS CONTROLS AS INDICATED ARE HEREBY GRANTED TO THE APPROPRIATE GOVERNING BODY AND SHALL BE IN ACCORDANCE WITH THE SEDGWICK COUNTY ACCESS MANAGEMENT STANDARDS.

KNOW ALL MEN BY THESE PRESENTS THAT WE, THE UNDERSIGNED PROPERTY OWNERS OF THE LAND AS ABOVE SET FORTH IN THE SURVEYOR'S CERTIFICATE, HAVE CAUSED THE LAND TO BE SURVEYED AND PLATTED INTO LOTS AND A BLOCK, THE SAME TO BE KNOWN AS ASR TREATMENT PLANT ADDITION, AN ADDITION TO SEDGWICK COUNTY, KANSAS.

OWNER(S):  
 CITY OF WICHITA, KANSAS MUNICIPAL CORPORATION

CARL BREWER, MAYOR

STATE OF KANSAS )  
 COUNTY OF SEDGWICK ) SS

THIS INSTRUMENT WAS ACKNOWLEDGED BEFORE ME ON \_\_\_\_\_, 2009,  
 BY CARL BREWER, MAYOR OF THE CITY OF WICHITA, KANSAS MUNICIPAL CORPORATION.

\_\_\_\_\_, NOTARY PUBLIC

MY APPOINTMENT EXPIRES: \_\_\_\_\_

THIS PLAT OF ASR TREATMENT PLANT ADDITION HAS BEEN SUBMITTED TO AND APPROVED BY THE WICHITA-SEGWICK COUNTY METROPOLITAN AREA PLANNING COMMISSION, WICHITA, KANSAS.

DATED THIS \_\_\_\_\_ DAY OF \_\_\_\_\_, 2009.

WICHITA-SEGWICK COUNTY METROPOLITAN AREA PLANNING COMMISSION

\_\_\_\_\_, CHAIR  
 DARRELL DOWNING, SECRETARY  
 JOHN L. SCHUEGL

REVIEWED IN ACCORDANCE WITH K.S.A. 58-2005 ON THIS \_\_\_\_\_ DAY OF \_\_\_\_\_, 2009.

TRICIA L. ROBELLO, L.S. #1246  
 DEPUTY COUNTY SURVEYOR  
 SEDGWICK COUNTY, KANSAS

THIS PLAT IS APPROVED AND ALL DEDICATIONS SHOWN HEREON, IF ANY, ARE ACCEPTED BY THE BOARD OF COUNTY COMMISSIONERS OF SEDGWICK COUNTY, KANSAS, THIS \_\_\_\_\_ DAY OF \_\_\_\_\_, 2009.

KELLY PARKS, CHAIRMAN  
 KELLY B. ARNOLD, COUNTY CLERK  
 ENTERED ON TRANSFER RECORD THIS \_\_\_\_\_ DAY OF \_\_\_\_\_, 2009.

KELLY B. ARNOLD, COUNTY CLERK

THIS IS TO CERTIFY THAT THIS INSTRUMENT WAS FILED FOR RECORD IN THE REGISTER OF DEEDS OFFICE AT \_\_\_\_\_ A.M. - P.M., ON THE \_\_\_\_\_ DAY OF \_\_\_\_\_, 2009.

BILL WEXX, REGISTER OF DEEDS  
 TONYA BUCHINGHAM, DEPUTY

DATE OF PREPARATION: JULY 2009

TOPOGRAPHIC SURVEY:  
 OWNER: CITY OF WICHITA (WATER UTILITIES)  
 455 N. MAIN  
 WICHITA, KANSAS 67202

SUBOWNER: PROFESSIONAL ENGINEERING CONSULTANTS, P.A.  
 303 S. TOPKAWA  
 WICHITA, KS 67202

RW 117TH ST. N.  
 PROJECT AREA  
 118TH ST. N.  
 109TH ST. N.

WICHITA MAP

APPROVED FOR THE CITY OF WICHITA, KANSAS BY CARL BREWER, MAYOR