

# ASR TREATMENT PLANT ADDITION

AN ADDITION TO SEDGWICK COUNTY, KANSAS

FINAL TRACING REC'D

10-8-07

BM 34

SCALE: 1" = 100'

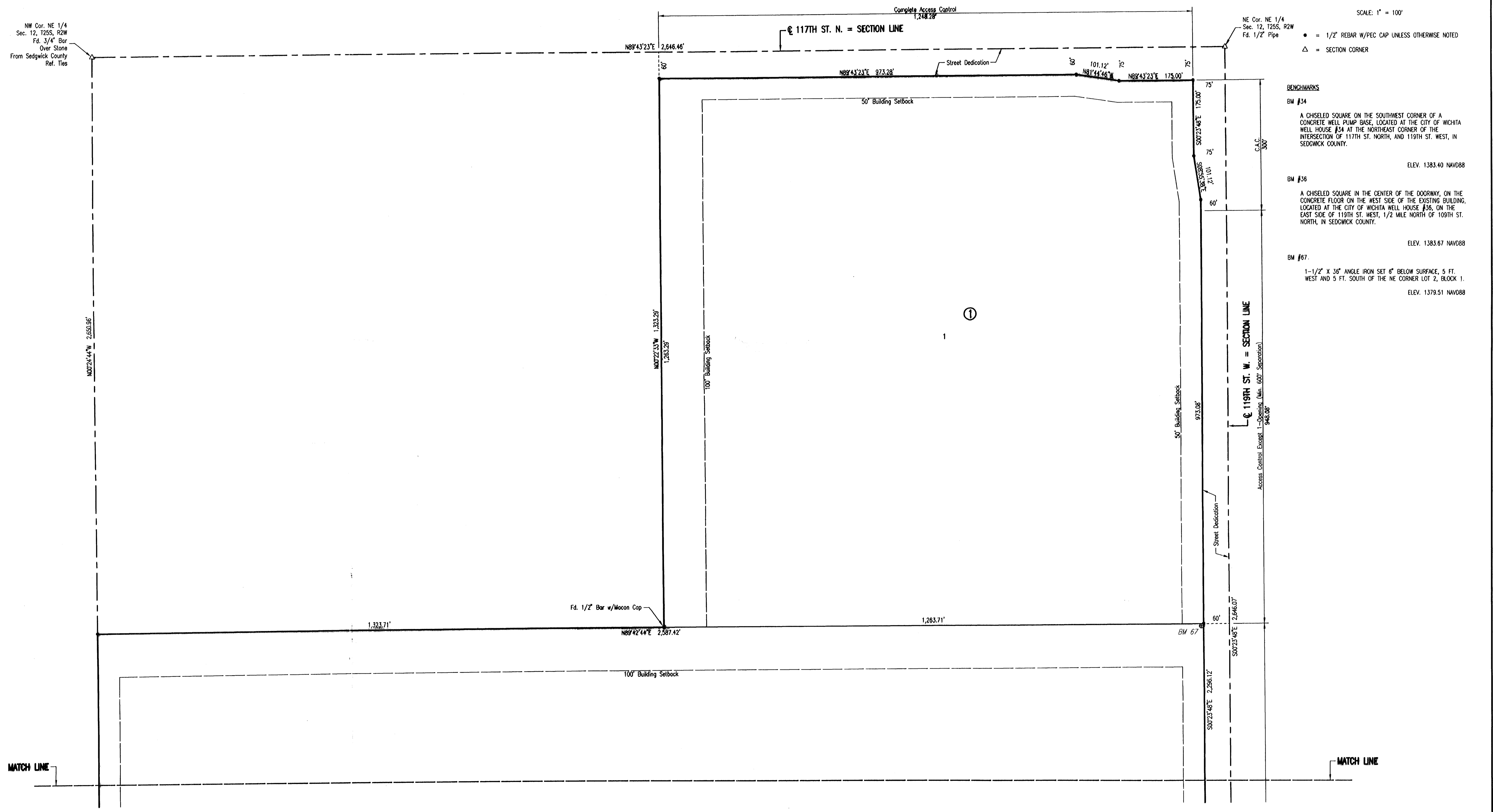
● = 1/2" REBAR W/PEC CAP UNLESS OTHERWISE NOTED  
 △ = SECTION CORNER

**BENCHMARKS**

- BM #34  
 A CHISELED SQUARE ON THE SOUTHWEST CORNER OF A CONCRETE WELL PUMP BASE, LOCATED AT THE CITY OF WICHITA WELL HOUSE #34 AT THE NORTHEAST CORNER OF THE INTERSECTION OF 117TH ST. NORTH, AND 119TH ST. WEST, IN SEDGWICK COUNTY.  
 ELEV. 1383.40 NAVD88
- BM #36  
 A CHISELED SQUARE IN THE CENTER OF THE DOORWAY, ON THE CONCRETE FLOOR ON THE WEST SIDE OF THE EXISTING BUILDING, LOCATED AT THE CITY OF WICHITA WELL HOUSE #36, ON THE EAST SIDE OF 119TH ST. WEST, 1/2 MILE NORTH OF 109TH ST. NORTH, IN SEDGWICK COUNTY.  
 ELEV. 1383.67 NAVD88
- BM #67.  
 1-1/2" X 3/8" ANGLE IRON SET 6" BELOW SURFACE, 5 FT. WEST AND 5 FT. SOUTH OF THE NE CORNER LOT 2, BLOCK 1.  
 ELEV. 1379.51 NAVD88

NW Cor. NE 1/4  
 Sec. 12, T25S, R2W  
 Fd. 3/4" Bar  
 Over Stone  
 From Sedgwick County  
 Ref. Ties

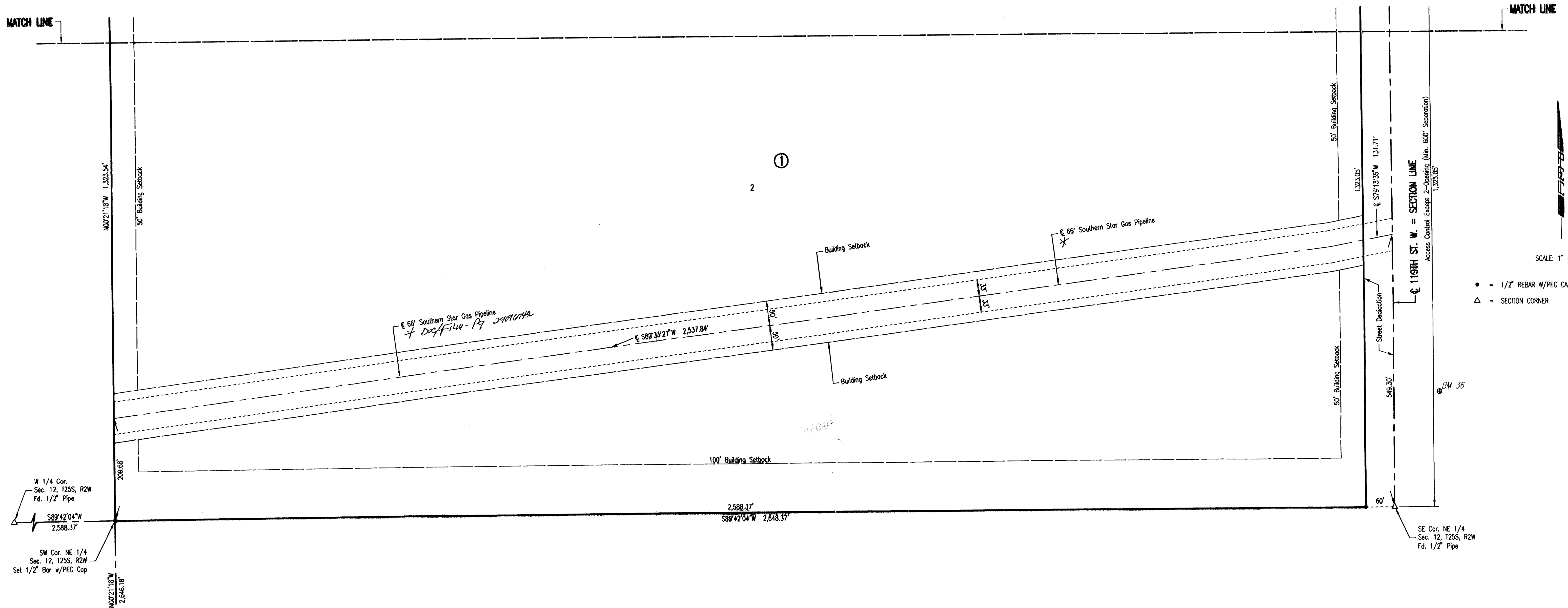
NE Cor. NE 1/4  
 Sec. 12, T25S, R2W  
 Fd. 1/2" Pipe



Sheet 10-06-2009 5:18:15 PM by AEE  
 Plot Scale 1:100  
 10-07-2009 8:35:52 AM  
 C:\2007\07685\005\_ASR Plant\01\_07685-005 Plant FINAL.PLOT 1 of 2

# ASR TREATMENT PLANT ADDITION

## AN ADDITION TO SEDGWICK COUNTY, KANSAS



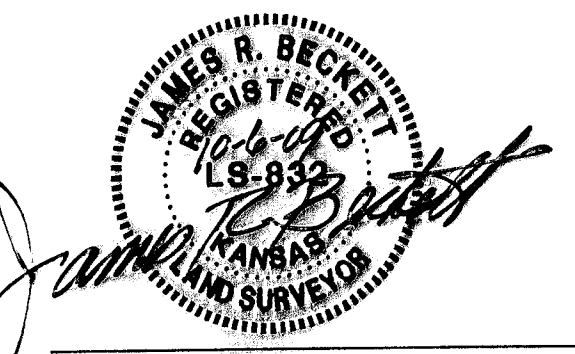
SCALE: 1" = 100'

- = 1/2" REBAR W/PEC CAP UNLESS OTHERWISE NOTED
- △ = SECTION CORNER

STATE OF KANSAS )  
 ) SS  
 COUNTY OF SEDGWICK )

WE, PROFESSIONAL ENGINEERING CONSULTANTS, P.A., ENGINEERS AND SURVEYORS IN AFORESAID STATE AND COUNTY, DO HEREBY CERTIFY THAT ON THIS 6TH DAY OF OCTOBER, 2009, WE HAVE SURVEYED AND PLATTED ASR TREATMENT PLANT ADDITION, AN ADDITION TO SEDGWICK COUNTY, KANSAS, INTO LOTS AND A BLOCK. THE SAME BEING DESCRIBED AS FOLLOWS:

THE EAST HALF OF THE NORTH HALF OF THE NORTHEAST QUARTER AND THE SOUTH HALF OF THE NORTHEAST QUARTER, SECTION 12, TOWNSHIP 25 SOUTH, RANGE 2 WEST OF THE 6TH P.M.



JAMES R. BECKETT, R.L.S. NO. 832  
 PROFESSIONAL ENGINEERING CONSULTANTS, P.A.

ALL ABUTTER'S RIGHT OF ACCESS TO AND FROM 119TH ST. W. OVER AND ACROSS THE EAST PROPERTY LINE IS HEREBY GRANTED TO THE CITY OF WICHITA, PROVIDED HOWEVER THAT THERE SHALL BE ACCESS TO 119 ST. W. AT THREE LOCATIONS AS SHOWN. THERE SHALL BE COMPLETE ACCESS CONTROL ALONG 119TH ST. W.

THE STREETS ARE HEREBY DEDICATED TO AND FOR THE USE OF THE PUBLIC.

A DRAINAGE PLAN HAS BEEN APPROVED FOR THIS PLAT. ALL DRAINAGE EASEMENTS, RESERVES, AND RIGHTS-OF-WAY SHALL REMAIN AT ESTABLISHED GRADES AND UNOBSTRUCTED TO ALLOW FOR THE CONVEYANCE OF STORMWATER, UNLESS MODIFIED WITH THE APPROVAL OF THE COUNTY ENGINEER.

THIS ADDITION IS SUBJECT TO CONDITIONS OF THE SURFACE WATER TREATMENT PLANT, CONDITIONAL USE PLAN COM 2009-11.

ACCESS CONTROLS AS INDICATED ARE HEREBY GRANTED TO THE APPROPRIATE GOVERNING BODY AND SHALL BE IN ACCORDANCE WITH THE SEDGWICK COUNTY ACCESS MANAGEMENT STANDARDS.

KNOW ALL MEN BY THESE PRESENTS THAT WE, THE UNDERSIGNED PROPERTY OWNERS OF THE LAND AS ABOVE SET FORTH IN THE SURVEYOR'S CERTIFICATE, HAVE CAUSED THE LAND TO BE SURVEYED AND PLATTED INTO LOTS AND A BLOCK. THE SAME TO BE KNOWN AS ASR TREATMENT PLANT ADDITION, AN ADDITION TO SEDGWICK COUNTY, KANSAS.

OWNER(S):  
 CITY OF WICHITA, KANSAS MUNICIPAL CORPORATION

CARL BREWER, MAYOR

STATE OF KANSAS )  
 ) SS  
 COUNTY OF SEDGWICK )

THIS INSTRUMENT WAS ACKNOWLEDGED BEFORE ME ON \_\_\_\_\_, 2009, BY CARL BREWER, MAYOR OF THE CITY OF WICHITA, KANSAS MUNICIPAL CORPORATION.

\_\_\_\_\_, NOTARY PUBLIC

MY APPOINTMENT EXPIRES:

THIS PLAT OF ASR TREATMENT PLANT ADDITION HAS BEEN SUBMITTED TO AND APPROVED BY THE WICHITA-SEDGWICK COUNTY METROPOLITAN AREA PLANNING COMMISSION, WICHITA, KANSAS.

DATED THIS \_\_\_\_ DAY OF \_\_\_\_\_, 2009.

WICHITA-SEDGWICK COUNTY METROPOLITAN AREA PLANNING COMMISSION

\_\_\_\_\_, CHAIR

DARRELL DOWNING

\_\_\_\_\_, SECRETARY

JOHN L. SCHLEGEL

REVIEWED IN ACCORDANCE WITH K.S.A. 58-2005 ON THIS \_\_\_\_ DAY OF \_\_\_\_\_, 2009.

TRICIA L. ROBELLO, LS #1246  
 DEPUTY COUNTY SURVEYOR  
 SEDGWICK COUNTY KANSAS

THIS PLAT IS APPROVED AND ALL DEDICATIONS SHOWN HEREON, IF ANY, ARE ACCEPTED BY THE BOARD OF COUNTY COMMISSIONERS OF SEDGWICK COUNTY, KANSAS, THIS \_\_\_\_ DAY OF \_\_\_\_\_, 2009.

\_\_\_\_\_, CHAIRMAN

KELLY PARKS

\_\_\_\_\_, COUNTY CLERK

KELLY B. ARNOLD

\_\_\_\_\_, COUNTY CLERK

ENTERED ON TRANSFER RECORD THIS \_\_\_\_ DAY OF \_\_\_\_\_, 2009.

KELLY B. ARNOLD

\_\_\_\_\_, REGISTER OF DEEDS

BILL MEEK

\_\_\_\_\_, DEPUTY

TONYA BUCKINGHAM

Showed 10-06-2009 2:30:10 PM by AEF  
 CA 2007070685 (025) ASR Plat 01\_07685-005 Plat FINAL PLAT 2 of 2