



30 0 30'

BENCH MARK: CHISELED SQUARE ON THE TOP OF CURB AT THE SOUTH CURB RETURN AT THE SOUTHEAST CORNER OF 33RD ST. N. AND ARKANSAS AVE. ELEVATION = 1317.54 (NAVD83)

Soil Type: Urban Land, Canadian Part
Hydrologic Group: B

Existing
West
Impervious 0.53 ac.
Grassed Area 3.25 ac.

Offsite
Impervious 0.02 ac.
Grassed Area 0.40 ac.

Total Impervious Area = 1.37 ac.

PROPOSED
Area A
Impervious 0.15 ac.
Grassed Area 1.58 ac.

Area E
Impervious 0.78 ac.
Grassed Area 0.22 ac.

Area B
Impervious 0.15 ac.
Grassed Area 0.27 ac.

Area F
Impervious 0.54 ac.
Grassed Area 0.37 ac.

Area C
Impervious 0.59 ac.
Grassed Area 0.29 ac.

Area G
Impervious 0.11 ac.
Grassed Area 0.12 ac.

Area D
Impervious 0.36 ac.
Grassed Area 0.05 ac.

Area H
Impervious 0.11 ac.
Grassed Area 0.12 ac.

Total Impervious Area = 2.79 ac.

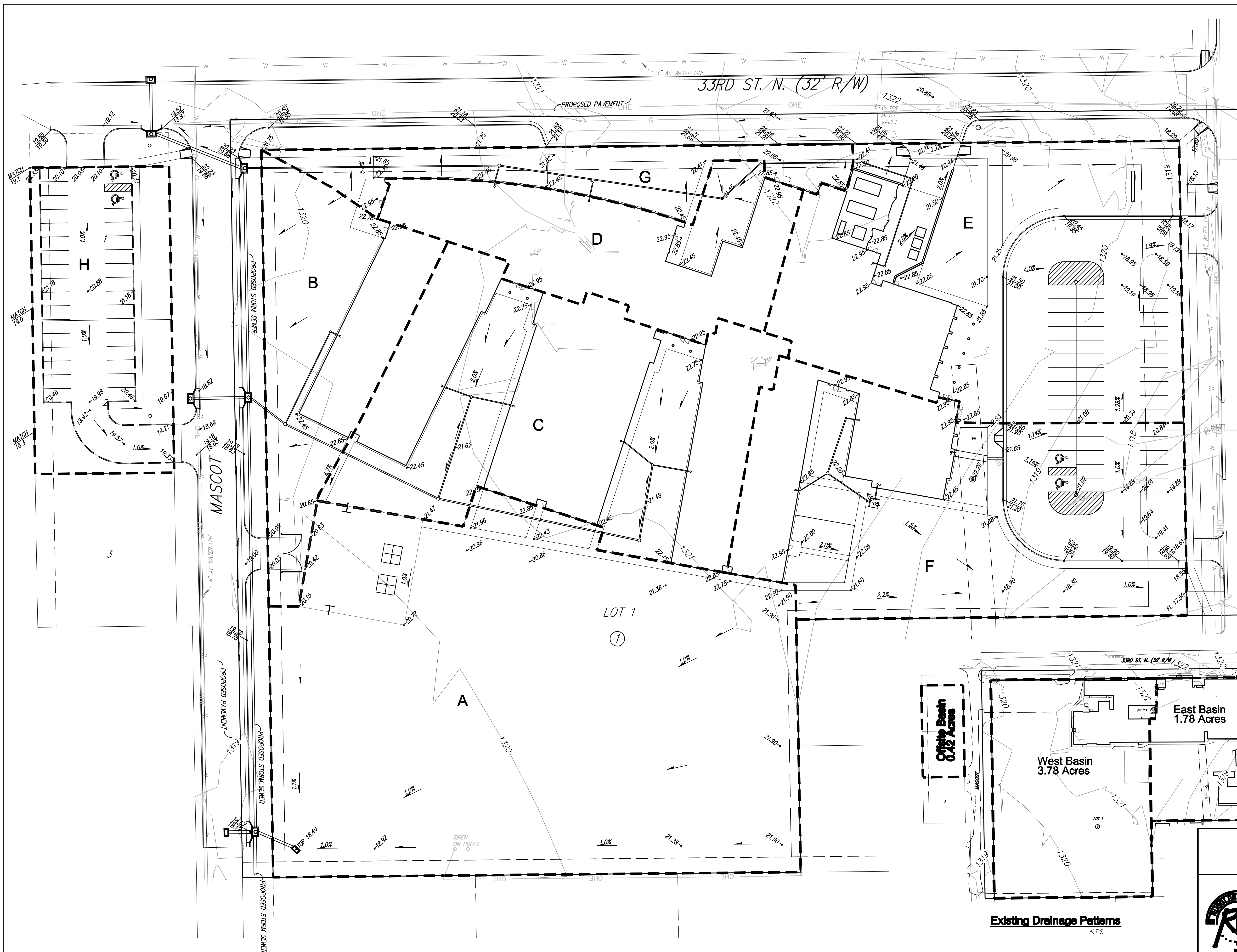
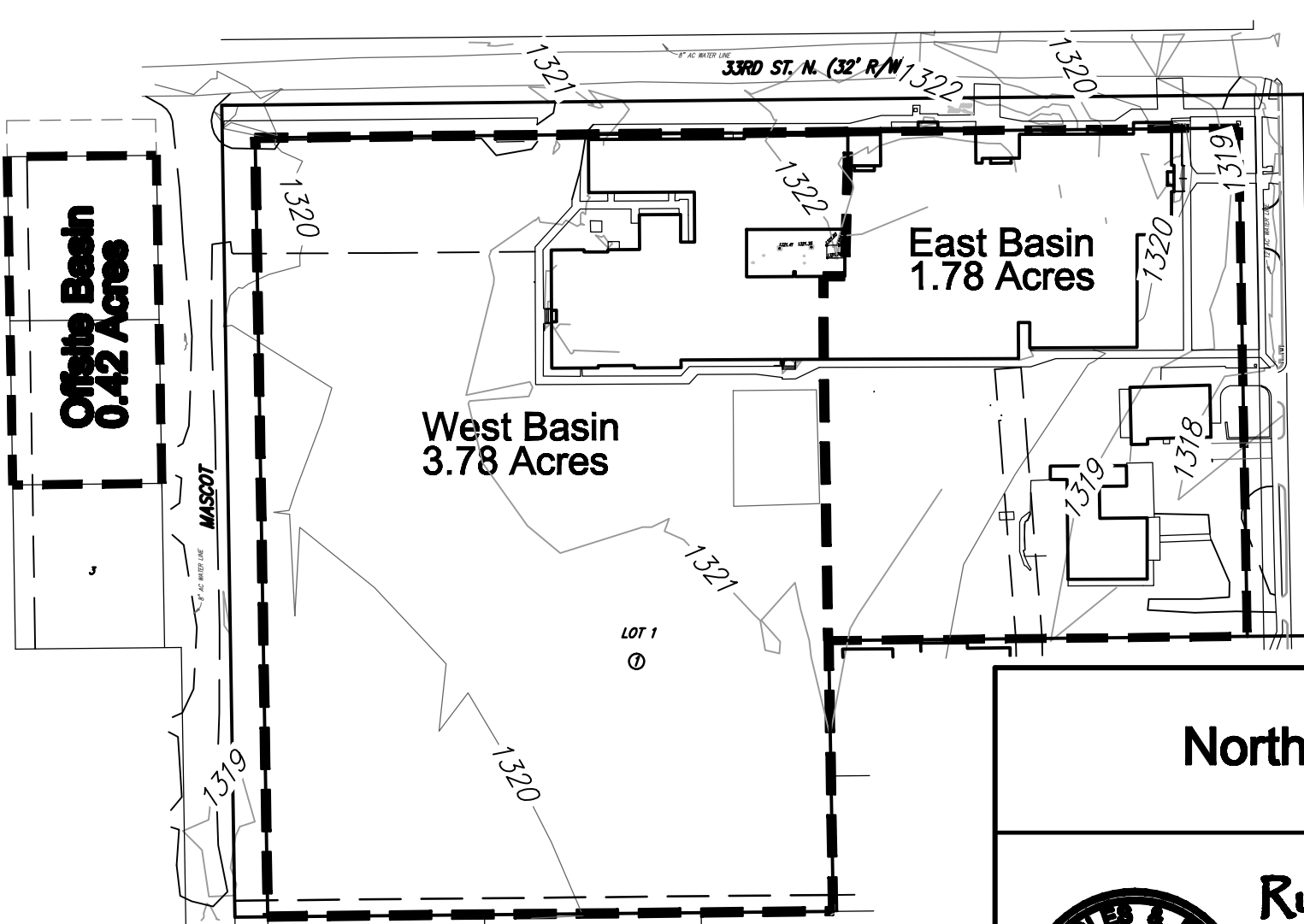
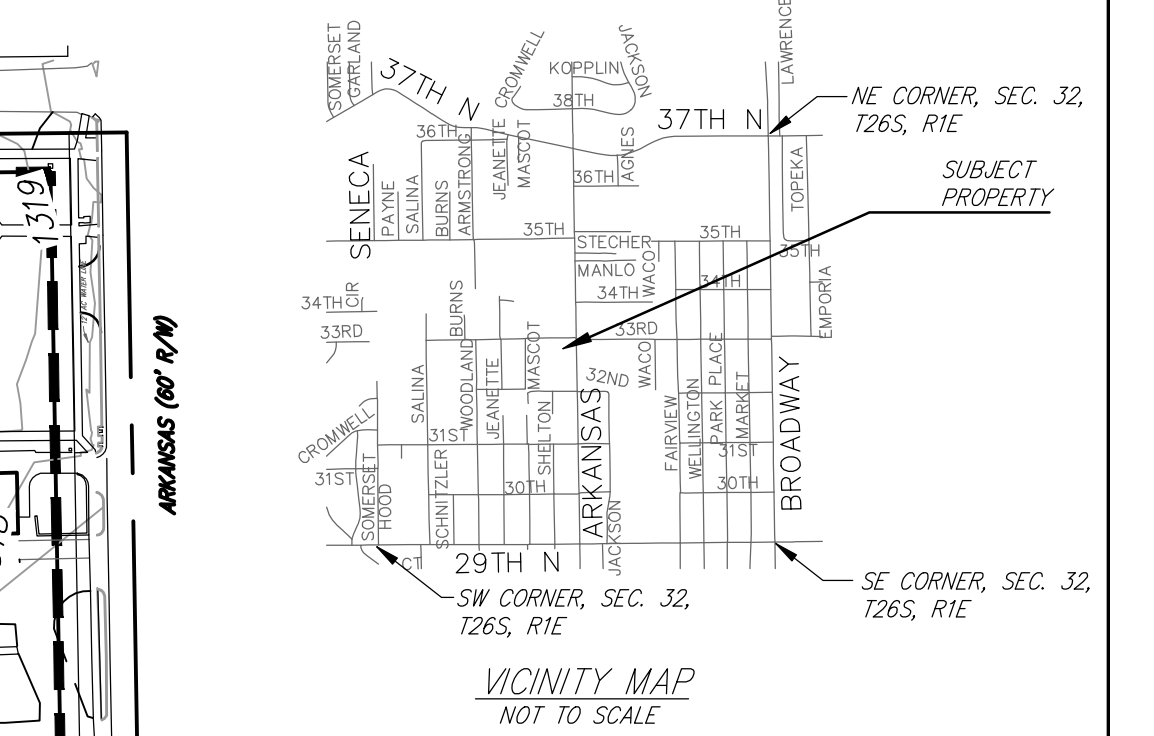
Existing Condition

	AREA	TC (min.)	C5	C100	I5	I100	Q5	Q100
West	3.78	26	0.31	0.48	3.50	5.79	4.1	10.5
East	1.78	15	0.51	0.64	4.56	7.37	4.2	8.3
Offsite	0.42	15	0.25	0.43	4.56	7.37	0.5	1.3

Proposed Condition

	AREA	TC (min.)	C5	C100	I5	I100	Q5	Q100
A	1.73	19	0.28	0.45	4.10	6.68	2.0	5.2
B	0.42	15	0.45	0.59	4.56	7.37	0.9	1.8
C	0.88	15	0.65	0.74	4.56	7.37	2.6	4.8
D	0.41	15	0.78	0.84	4.56	7.37	1.5	2.5
E	1.00	15	0.72	0.79	4.56	7.37	3.3	5.8
F	0.91	15	0.60	0.70	4.56	7.37	2.5	4.7
G	0.23	15	0.53	0.64	4.56	7.37	0.6	1.1
H	0.42	15	0.60	0.70	4.56	7.37	1.2	2.2

ARKANSAS (60' R/W)



DRAINAGE PLAN
North Elementary School Addition
WICHITA, KANSAS

Ruggles & Bohm, P.A.
Engineering, Surveying, Land Planning

824 North Main
Wichita, Kansas 67203
www.rbkansas.com

(913) 264-8888
(913) 264-4821 fax
E-mail: info@rbkansas.com

APPROVED FOR	PROJECT NUMBER	DATE
Drainage Plan {Plan 1}		Dec. 22, 2009

AML
AML
1
1
3547P