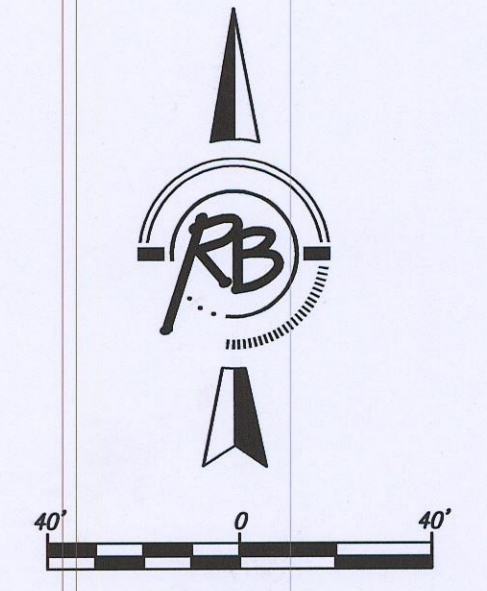
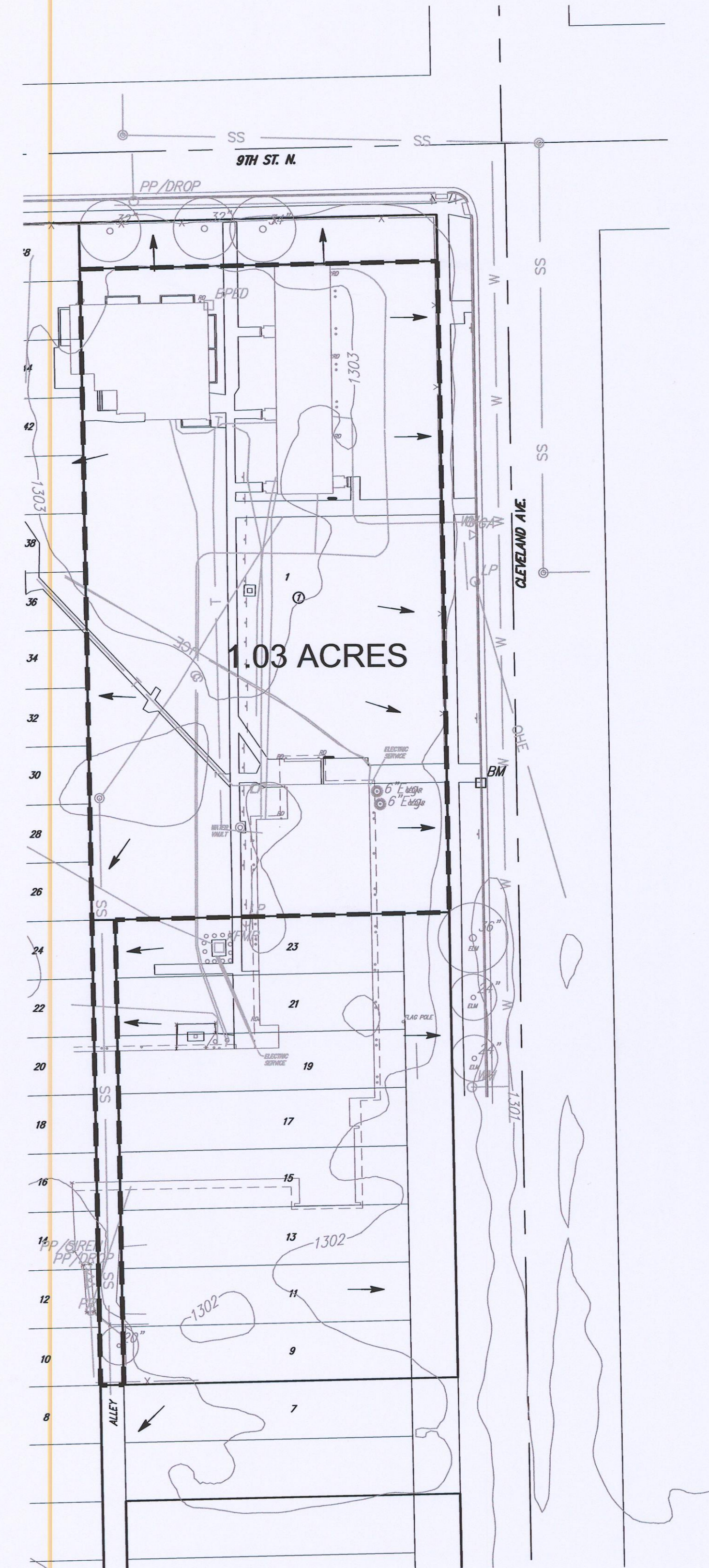
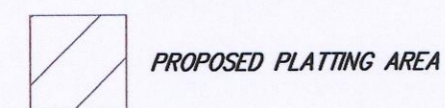




**AERIAL**

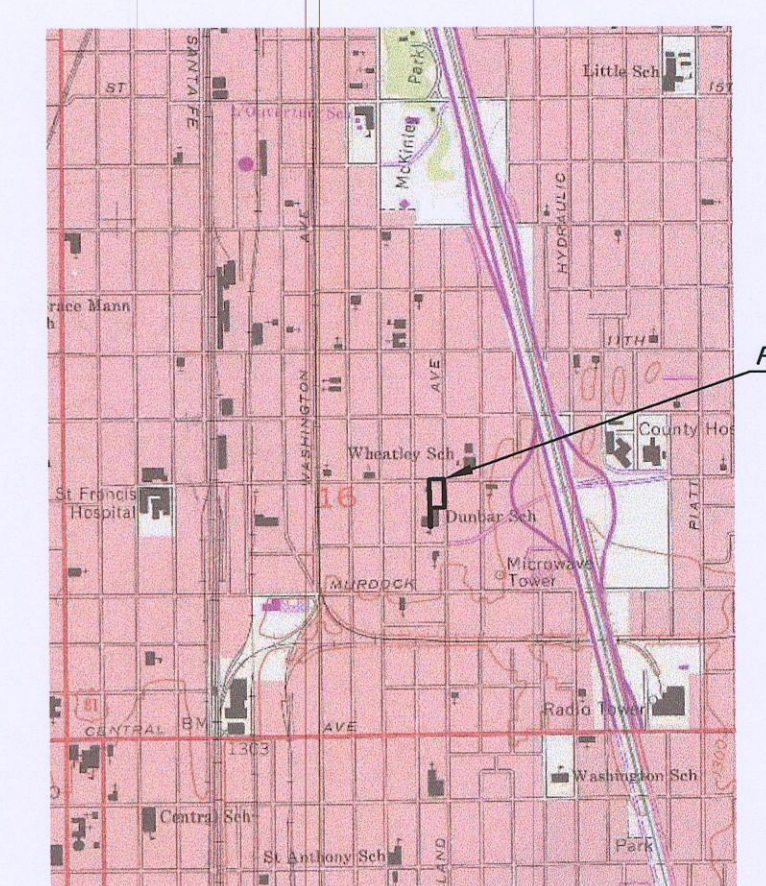


BENCHMARK: CHISELED SQUARE ON THE TOP OF CURB ON THE SOUTH SIDE OF SIDEWALK 21' W. OF THE CENTERLINE OF CLEVELAND AND 274' S. OF THE CENTERLINE OF 9TH ST. N. AT THE NORTH FACE OF BUILDING #923 N. CLEVELAND ELEVATION = 1,301.26 (NAVD88)

Soil Type: Urban Land, Elanco Part  
 Hydrologic Group: B  
 Site Area: 1.03 acres  
 Impervious Area: 0.55 acres

$T_c = 15$  min, by inspection  
 $k_s = 4.56$  in/hr  
 $kw = 7.37$  in/hr  
 $C_s = 0.69$   
 $C_w = 0.80$   
 $Q_p = C_s^{0.48} = 0.69^{0.48} * 1.03 = 3.2$  cfs  
 $Q_{wp} = C_w^{0.48} = 0.80^{0.48} * 1.03 = 6.1$  cfs

The site is fully developed and the impervious area is not to be increased. There will be no increase in pre- and post-development runoff.



**Site Location Map**  
 516-275-R1E



<b>DRAINAGE PLAN DUNBAR ADDITION WICHITA, KANSAS</b>			
	<b>Ruggles &amp; Bohm, P.A.</b> Engineering, Surveying, Land Planning		
	924 North Main Wichita, Kansas 67203 www.rbkansas.com	(316) 264-8008 (316) 264-4621 fax E-mail: info@rbkansas.com	
DRAWING FILE SURVEY BASE {Drainage Plan}	PROJECT NUMBER ---	DATE Mar. 25, 2010	DESIGN AML DRAWN AML REVIEW AML UTILITY DATE Mar. 25, 2010
			SHEET 1 OF 1