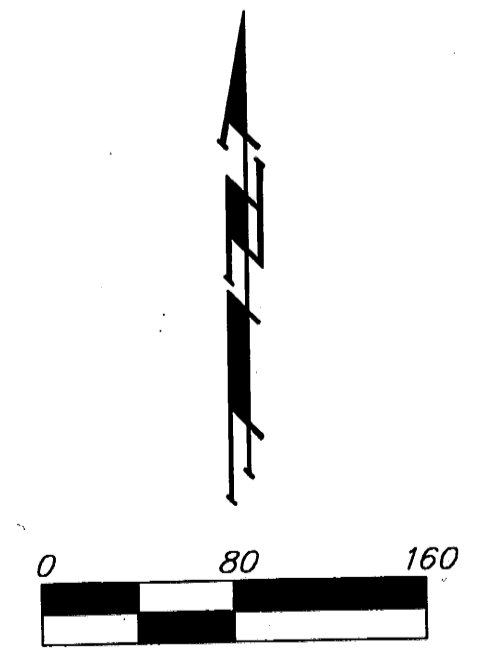
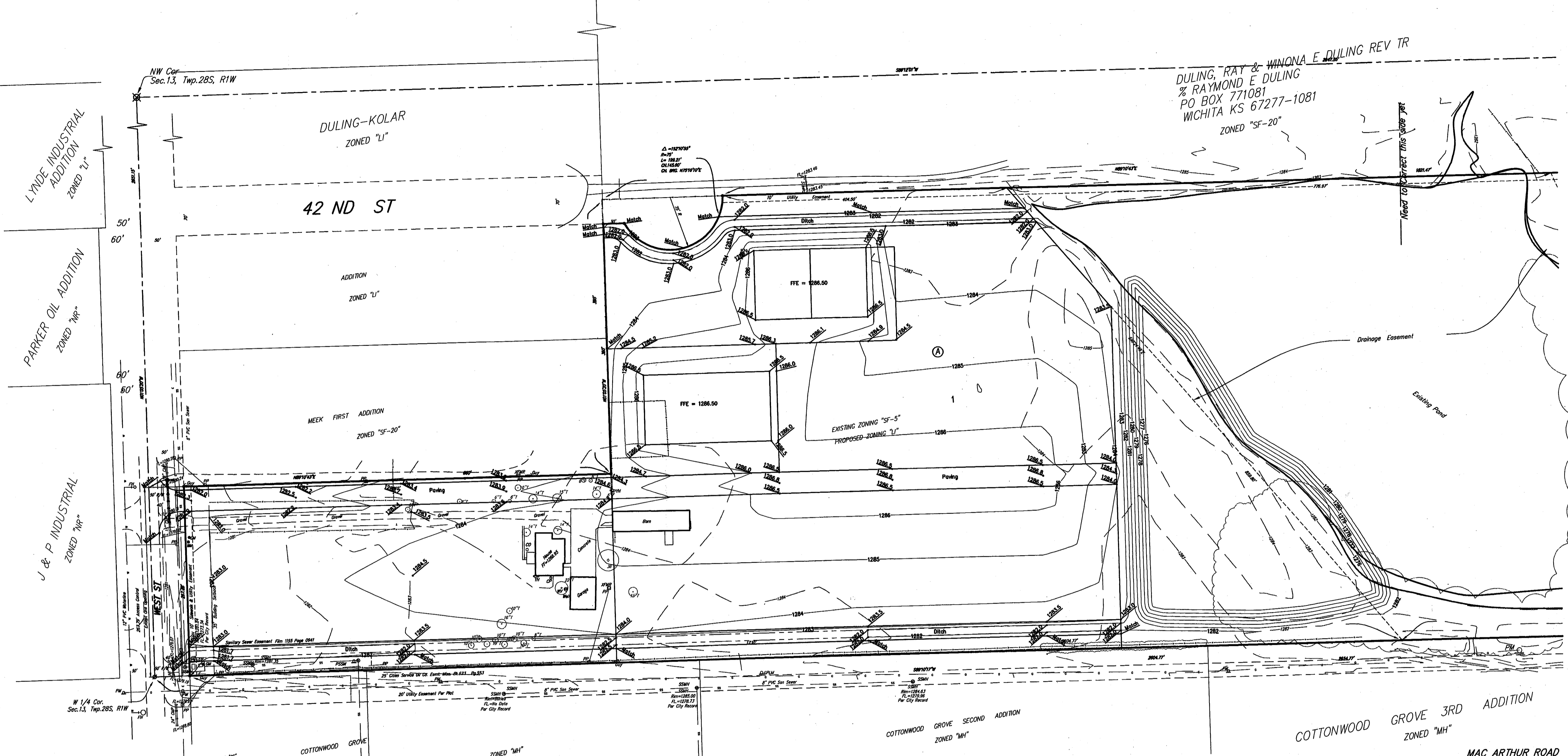


LANGE ADDITION

WICHITA, SEDGWICK COUNTY, KANSAS

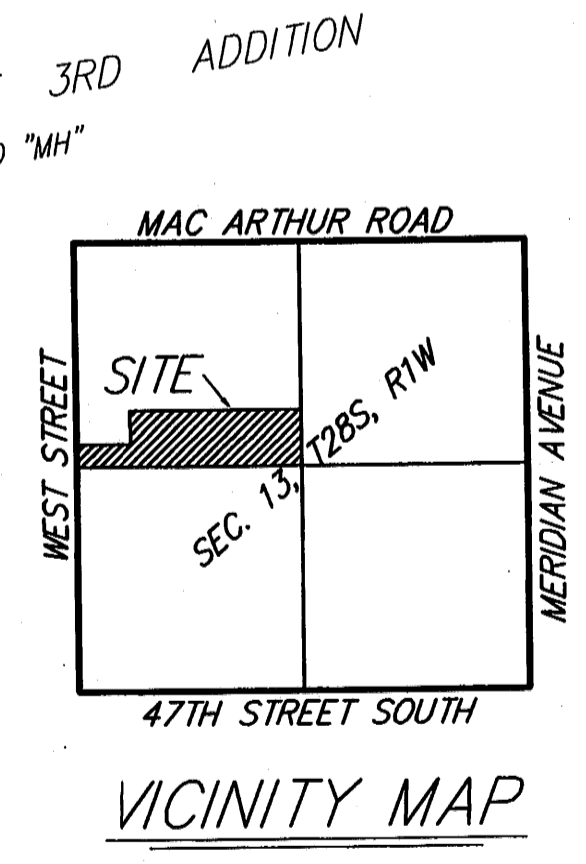
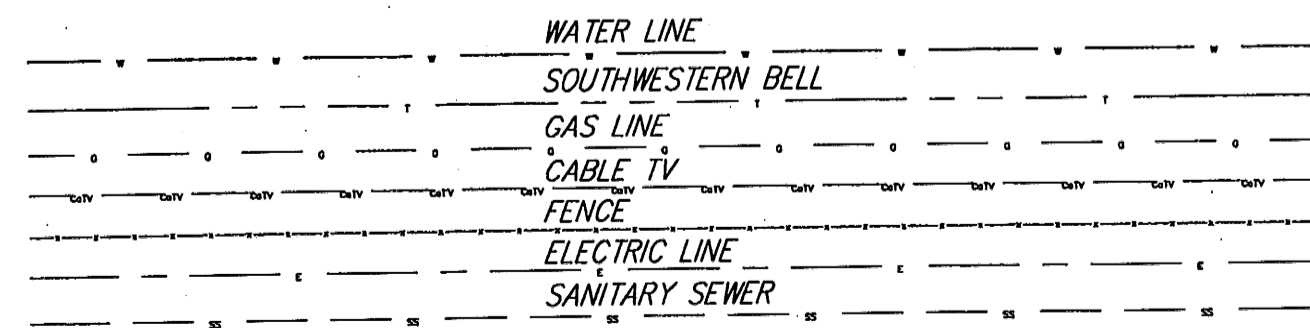
DULING, RAY & WINONA E. DULING REV TR
 % RAYMOND E DULING
 PO BOX 771081
 WICHITA KS 67277-1081
 ZONED "SF-20"



Estimated Volume Table

Site	Site Volume Table: Unadjusted		Fill yards	Net yards	Method
	Surf1	Surf2			
LANGE	fg1	eg with fg1	32515	24203	8313 (C) Grid

- PP □ = Power Pole
- XFMR □ = Transformer
- EB □ = Electric Box
- GuyC — = Guy Anchor
- CP ○ = Cable TV Pedestal
- GM ● = Gas Meter
- PM ⊕ = Pipeline Marker
- PSSM ⊕ = Pressurized San Sewer Marker
- SSMH ● = Sanitary Sewer Manhole
- CO ○ = Cleanout
- Well ○ = Cased Well
- WM ● = Water Meter
- WV ⊕ = Water Valve
- YH ⊕ = Yard Hydrant (Spigot)
- FH ○ = Fire Hydrant
- T ○ = Tree

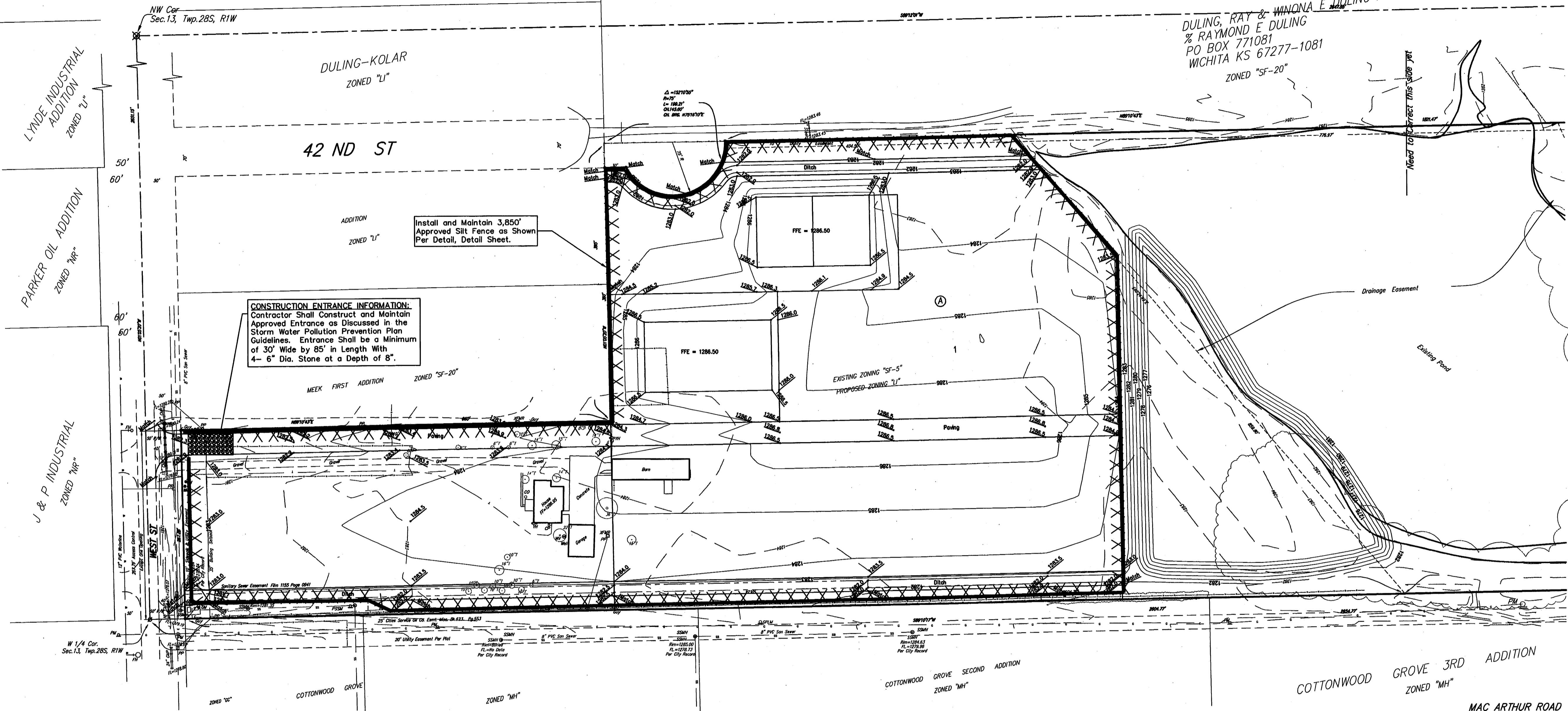


Baughman		Lange Addition Grading Plan Site Improvements	
Baughman Company, P.A. 315 S. W. Wichita, KS 67211 P 316-262-7711 F 316-262-0149 ENGINEERING SURVEYING PLANNING LANDSCAPE ARCHITECTURE			
PROJECT NUMBER	DESIGN	DRAWN	
	MWS	MWS	
REVISIONS:	APPROVED	DATE	
		05/08	
	SCALE	Noted	
	SHEET	1 OF 2	
E:\eng\Lange\lalteplan.dwg			0802-E034

LANGE ADDITION

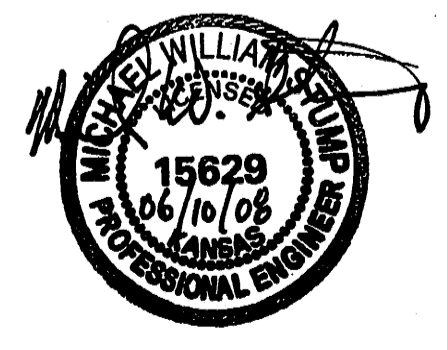
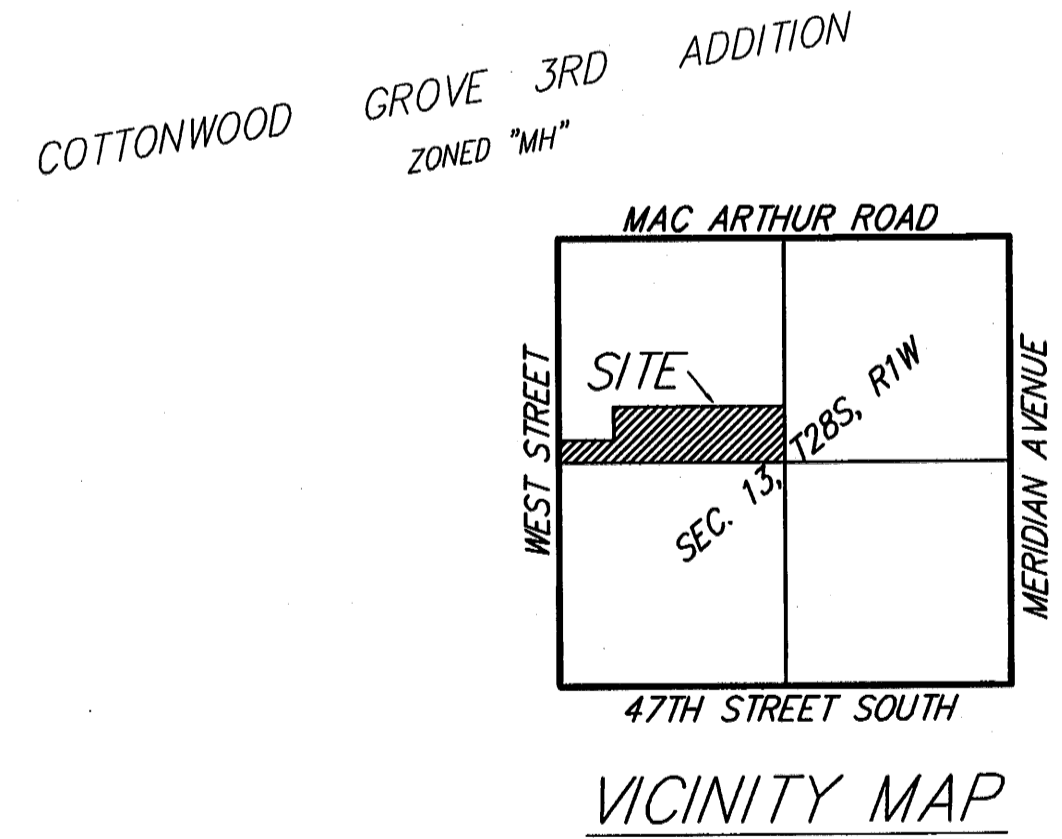
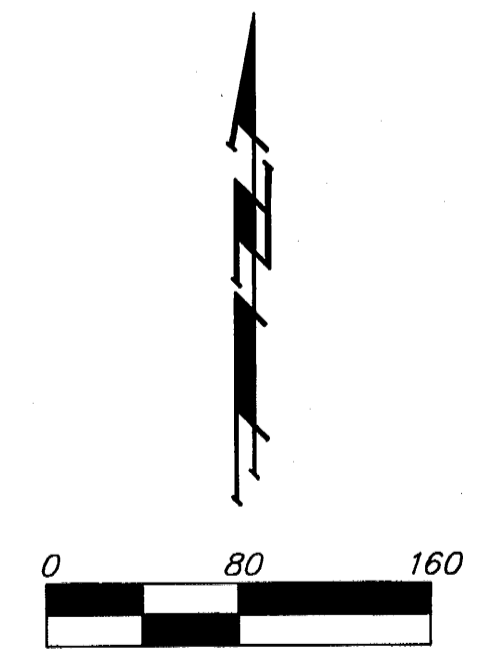
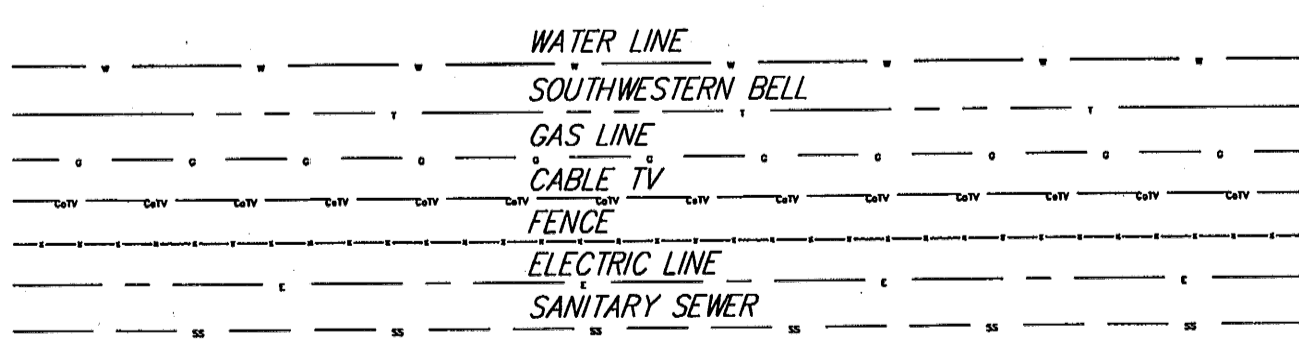
WICHITA, SEDGWICK COUNTY, KANSAS

DULING, RAY & WINONA E. DULING REV TR
 % RAYMOND E. DULING
 PO BOX 771081
 WICHITA KS 67277-1081
 ZONED "SF-20"



CONSTRUCTION ENTRANCE INFORMATION:
 Contractor Shall Construct and Maintain Approved Entrance as Discussed in the Storm Water Pollution Prevention Plan Guidelines. Entrance Shall be a Minimum of 30' Wide by 85' in Length With 4 - 6" Dia. Stone at a Depth of 6".

- PP □ = Power Pole
- XTMR □ = Transformer
- EB □ = Electric Box
- Guy □ = Guy Anchor
- CP ○ = Cable TV Pedestal
- GM ● = Gas Meter
- PM ○ = Pipeline Marker
- PSSM ○ = Pressurized San Sewer Marker
- SSMH ● = Sanitary Sewer Manhole
- CO ○ = Cleanout
- Well ○ = Cased Well
- WM ● = Water Meter
- WV ○ = Water Valve
- YH ○ = Yard Hydrant (Spigot)
- FH ○ = Fire Hydrant
- T ○ = Tree



Baughman		Lange Addition Erosion Control Plan Site Improvements	
Baughman Company, P.A. 315 Elm St. Wichita, KS 67111 316-261-7111 F316302049			
ENGINEERING SURVEYING PLANNING LANDSCAPE ARCHITECTURE			
PROJECT NUMBER	DESIGN	DRAWN	MWS
REVISIONS:	APPROVED:	DATE	05/08
SCALE		Noted	
SHEET		2	
E:\eng\Lange\lansiteplan.dwg		08-02-E034	