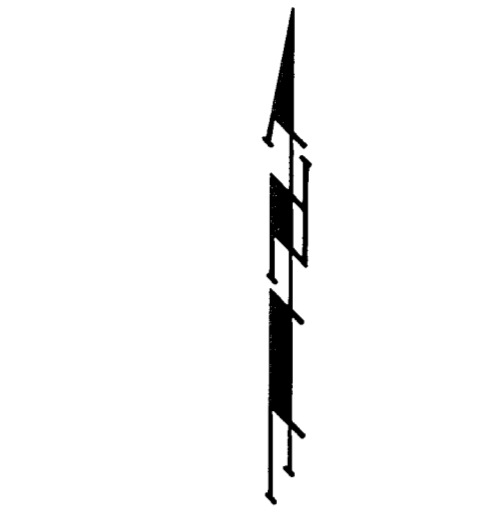
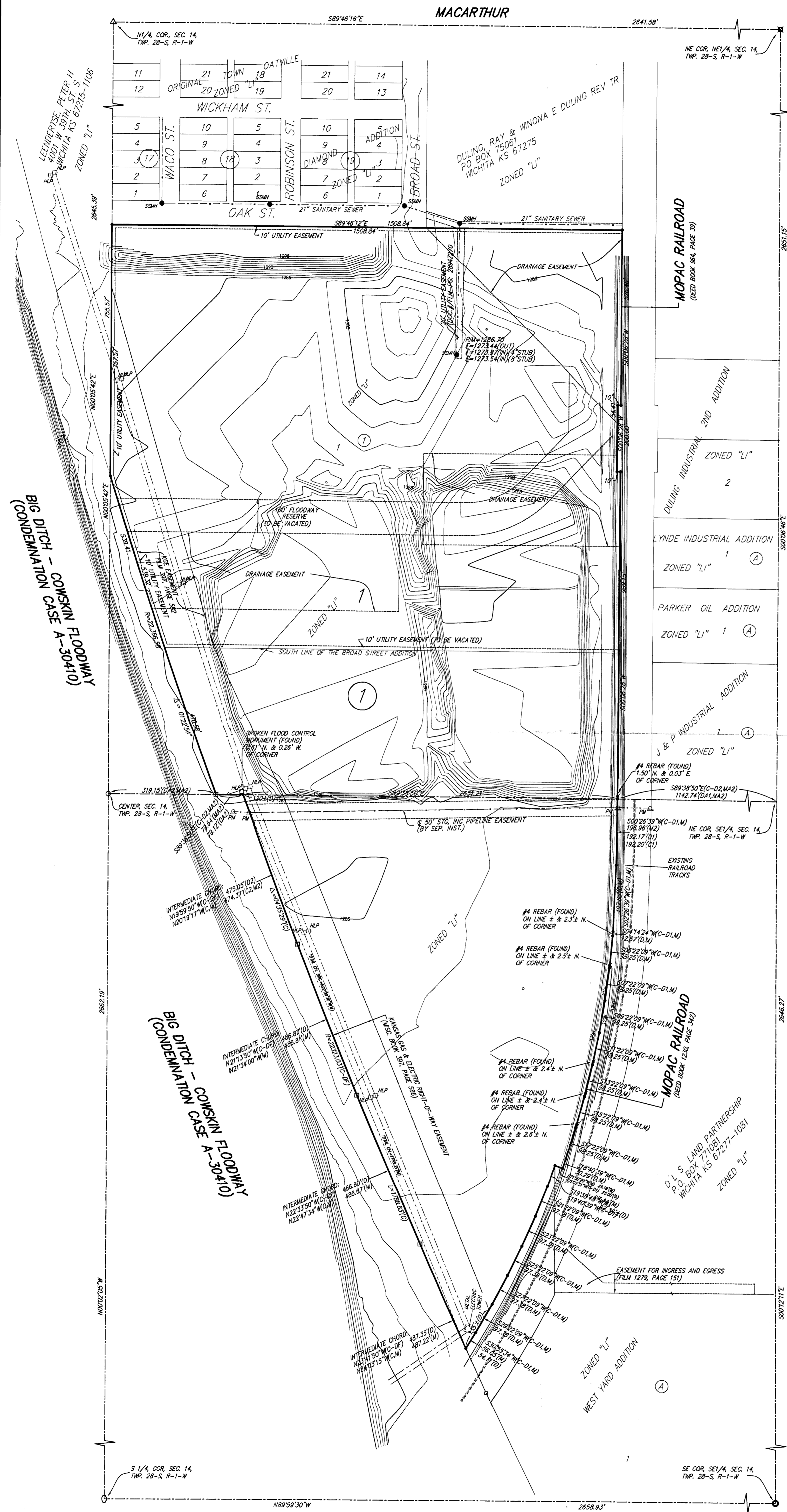


PRELIMINARY PLAT  
**BROAD STREET INDUSTRIAL PARK**  
 WICHITA, SEDGWICK COUNTY, KANSAS



DATE OF PREPARATION: 14 APRIL 2008  
 CONTOUR INTERVALS: 1 FOOT  
 DATE OF TOPOGRAPHY: OCTOBER 2004  
 1025  
 TOPOGRAPHY PROVIDED BY THE OWNER TO  
 BAUGHMAN COMPANY, P.A.

OWNER:  
 JAMES K. SUDOK TRUST  
 ATTY: JIM SUDOK  
 BERGKAMP CONSTRUCTION  
 3709 S. WEST ST.  
 WICHITA, KANSAS 67217

LEGAL DESCRIPTION:  
 LOT 1, BLOCK 1, THE BROAD STREET ADDITION TO  
 SEDGWICK COUNTY, KANSAS, TOGETHER WITH A TRACT OF  
 LAND IN THE NORTHEAST QUARTER OF SECTION 14,  
 TOWNSHIP 28 SOUTH, RANGE 1 WEST OF THE SIXTH  
 PRINCIPAL MERIDIAN, SEDGWICK COUNTY, KANSAS,  
 DESCRIBED AS FOLLOWS: THAT PART OF THE NORTHEAST  
 QUARTER OF SAID SECTION 14 LYING WEST OF THE  
 MISSOURI PACIFIC RAILROAD RIGHT-OF-WAY (AS  
 ESTABLISHED IN DEED BOOK 284, PAGE 39 AND DEED  
 BOOK 1230, PAGE 340), EXCEPT THE NORTH 83.00 FEET  
 THEREOF, EXCEPT THAT PART PLATTED AS THE BROAD  
 STREET ADDITION, AND EXCEPT THAT PART TAKEN FOR  
 THE WICHITA-VALLEY CENTER FLOODWAY CONDEMNED BY  
 CASE A-30410, AND TOGETHER WITH THAT PART OF THE  
 WEST HALF OF THE SOUTHEAST QUARTER OF SECTION 14,  
 TOWNSHIP 28 SOUTH, RANGE 1 WEST OF THE SIXTH  
 PRINCIPAL MERIDIAN, SEDGWICK COUNTY, KANSAS LYING  
 EAST OF THE WICHITA-VALLEY CENTER FLOOD CONTROL  
 RIGHT-OF-WAY PER CONDEMNATION CASE A-30410 AND  
 WEST OF THE MISSOURI PACIFIC RAILROAD RIGHT-OF-WAY  
 AS ESTABLISHED BY THE DEED FILED IN BOOK 1230, PAGE  
 344, TOGETHER WITH THAT PART OF THE EAST HALF OF  
 THE SOUTHEAST QUARTER OF SECTION 14, TOWNSHIP 28  
 SOUTH, RANGE 1 WEST OF THE SIXTH PRINCIPAL MERIDIAN,  
 SEDGWICK COUNTY, KANSAS LYING WEST OF THE MISSOURI  
 PACIFIC RAILROAD RIGHT-OF-WAY AS ESTABLISHED BY  
 DEED FILED IN BOOK MISS. 1230, PAGE 342.

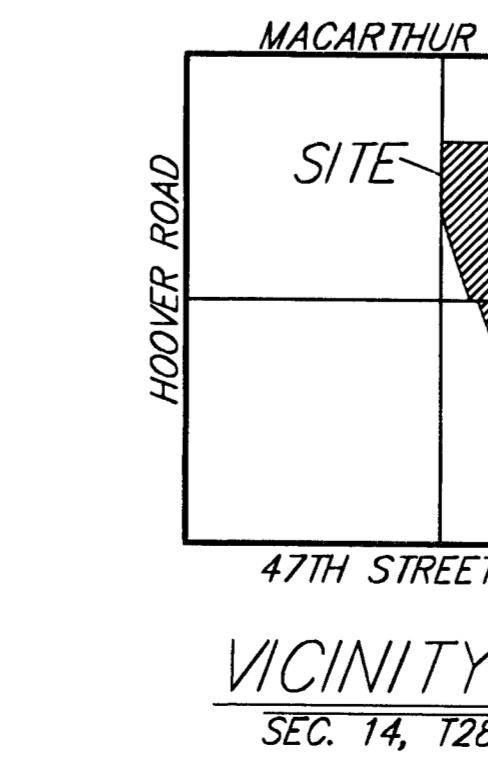
BENCHMARK:  
 WEST ST. AND MACARTHUR  
 CORNER MARK, NE CORNER OF  
 INTERSECTION  
 41.50 FT. NORTH OF CENTERLINE  
 52.00 FT. EAST OF CENTERLINE  
 87.00 FT. NE OF SECTION CORNER  
 ELEV.=1286.88 (NGVD29)

- = #4 REBAR W/ "DAUGHMAN" CAP (SET)
- = #4 REBAR (FOUND)
- = #4 REBAR W/ "TILE" CAP (FOUND)
- = P/W MONUMENT (FLOOD CONTROL)
- = 1" IRON (FOUND)
- = #4 REBAR W/ "DAUGHMAN" CAP (FOUND)
- = 3/4" IRON (FOUND)
- = #5 REBAR W/ TANGLE (FOUND)
- = #5 REBAR (FOUND)
- = STONE W/ 3/4" IRON (FOUND)
- = #4 REBAR W/ "WISCONSIN" CAP (FOUND)

- (M) = MEASURED
- (D) = DESCRIBED
- (C) = CALCULATED
- (C-01) = CALCULATED PER DESCRIBED INFO.  
 (BASIS OF BEARING SYSTEM BEING A  
 LINE FROM E1/4 COR. TO W1/4 COR.)
- (C-02) = CALCULATED PER DESCRIBED INFO.  
 (BASIS OF BEARING SYSTEM BEING A  
 LINE FROM E1/4 COR. TO FOUND  
 CONCRETE FLOOD CONTROL MONUMENT)
- (C-03) = CALCULATED FROM BIG DITCH - CONSKIN  
 FLOODWAY (CONDEMNATION CASE A-30410)  
 TRACT DESCRIPTION
- (D1) = DESCRIBED TO LINE FROM E1/4 COR.  
 TO W1/4 COR.
- (D2) = DESCRIBED TO LINE FROM E1/4 COR.  
 TO FOUND CONCRETE FLOOD  
 CONTROL MONUMENT
- (C1) = CALCULATED TO LINE FROM E1/4 COR.  
 TO W1/4 COR.
- (C2) = CALCULATED TO LINE FROM E1/4 COR.  
 TO FOUND CONCRETE FLOOD  
 CONTROL MONUMENT
- (M2) = MEASURED TO LINE FROM E1/4 COR.  
 TO FOUND CONCRETE FLOOD  
 CONTROL MONUMENT
- (D01) = DESCRIBED ALONG LINE FROM E1/4 COR.  
 TO W1/4 COR.
- (D02) = DESCRIBED ALONG LINE FROM E1/4 COR.  
 TO FOUND CONCRETE FLOOD  
 CONTROL MONUMENT
- (M01) = MEASURED ALONG LINE FROM E1/4 COR.  
 TO W1/4 COR.
- (M02) = MEASURED ALONG LINE FROM E1/4 COR.  
 TO FOUND CONCRETE FLOOD  
 CONTROL MONUMENT
- (M03) = MEASURED ALONG LINE FROM W1/4 COR.  
 TO CENTER OF SECTION AS ESTABLISHED  
 BY LINE FROM FOUND FLOOD CONTROL  
 MONUMENT TO E1/4 COR.

SMH = Sanitary Sewer Manhole  
 HLP = High Line Pole  
 Q/A = Gully Access  
 P.W.D. = Pipeline Marker

--- GAS LINE  
 --- ELECTRIC LINE



**BROAD STREET INDUSTRIAL PARK**

14 APRIL 2008  
**Baughman** Baughman Company, P.A.  
 315 Ellis St., Wichita, KS 67211 P 316-262-7271 F 316-262-0149  
 ENGINEERING | SURVEYING | PLANNING | LANDMARK ARCHITECTURE  
 E:\PLAT\BERGKAMP INDUSTRIAL PARK.dwg/BERGKAMP\IND-PARK.dwg CED