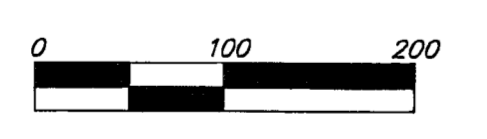
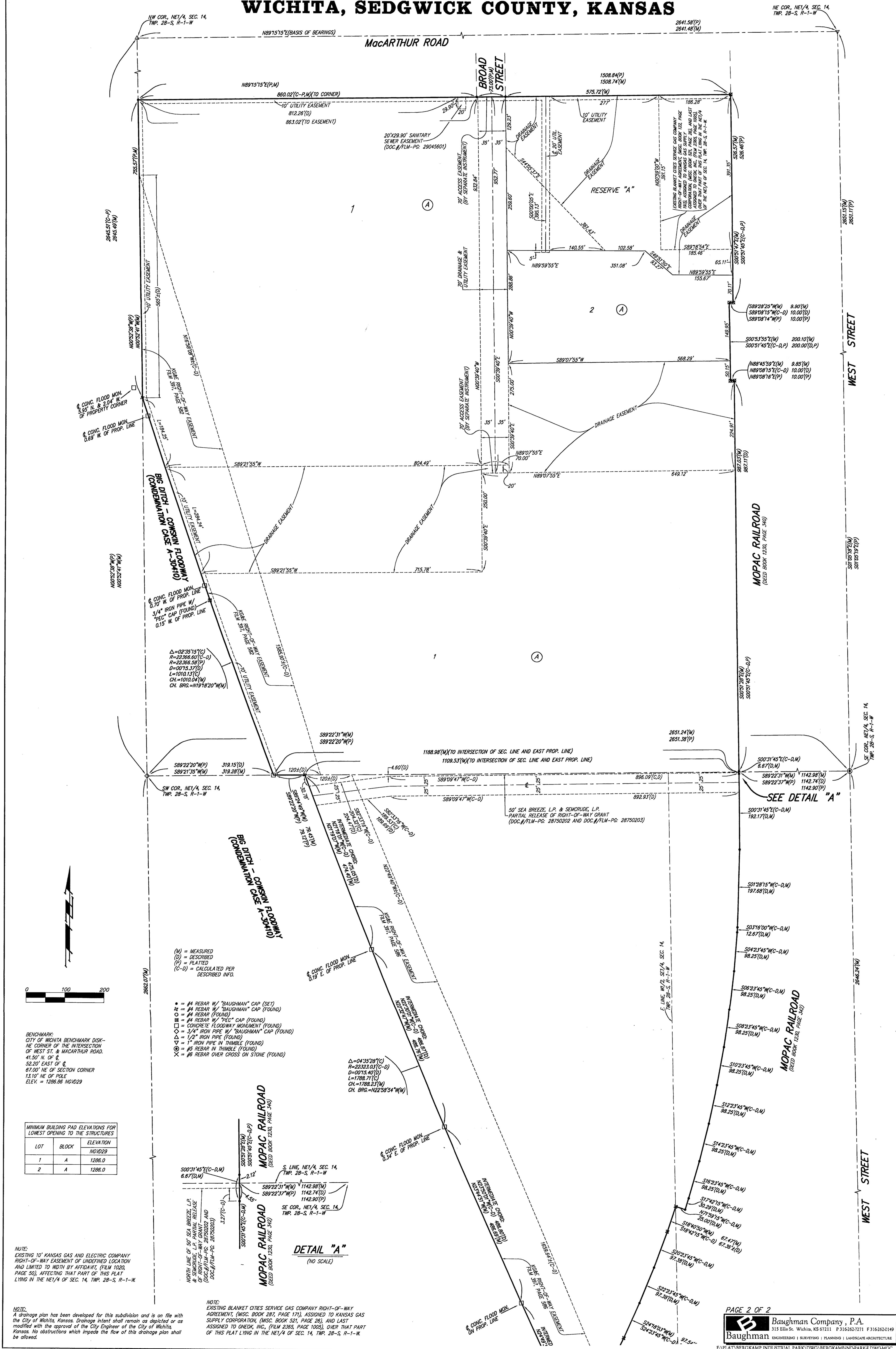


BROAD STREET INDUSTRIAL PARK

WICHITA, SEDGWICK COUNTY, KANSAS



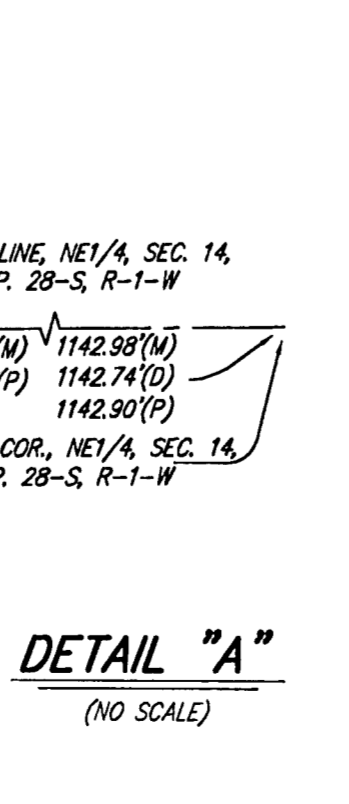
BENCHMARK
CITY OF WICHITA BENCHMARK DSK-
NE CORNER OF THE INTERSECTION
OF WEST ST. & MACARTHUR ROAD.
41.50' N. OF E.
52.00' EAST OF E.
67.00' NE OF SECTION CORNER
13.10' NE OF POLE
ELEV. = 1088.86 NGVD29

MINIMUM BUILDING PAD ELEVATIONS FOR LOWEST OPENING TO THE STRUCTURES		
LOT	BLOCK	ELEVATION NGVD29
1	A	1286.0
2	A	1286.0

NOTE:
EXISTING 10' KANSAS GAS AND ELECTRIC COMPANY
RIGHT-OF-WAY EASEMENT OF UNDEFINED LOCATION
AND LIMITED TO NORTH BY AFFIDAVIT, (FILM 1020,
PAGE 50), AFFECTING THAT PART OF THIS PLAT
LYING IN THE NE 1/4 OF SEC. 14, TWP. 28-S, R-1-W

- (M) = MEASURED
 - (D) = DESCRIBED
 - (P) = PLATTED
 - (C-D) = CALCULATED PER DESCRIBED INFO.
- * = #4 REBAR W/ "BAUGHMAN" CAP (SET)
 - # = #4 REBAR W/ "BAUGHMAN" CAP (FOUND)
 - = #4 REBAR (FOUND)
 - = #4 REBAR W/ "750" CAP (FOUND)
 - = CONCRETE FLOODWAY MONUMENT (FOUND)
 - ◇ = 1/4" IRON PIPE W/ "BAUGHMAN" CAP (FOUND)
 - = 1/2" IRON PIPE (FOUND)
 - △ = 1" IRON PIPE IN TRIMBLE (FOUND)
 - ⊗ = #5 REBAR IN TRIMBLE (FOUND)
 - ⊗ = #5 REBAR OVER CROSS ON STONE (FOUND)

Δ = 04°35'28"(C)
R = 2233.03(C-D)
D = 2075.40(C)
L = 1788.71(C)
CH BRG = 102°58'54"(M)



DETAIL "A"
(NO SCALE)

NOTE:
EXISTING BLANKET CITIES SERVICE GAS COMPANY RIGHT-OF-WAY
AGREEMENT, (MSC. BOOK 287, PAGE 171), ASSIGNED TO KANSAS GAS
SUPPLY CORPORATION, (MSC. BOOK 321, PAGE 26), AND LAST
ASSIGNED TO ONEOK, INC. (FILM 2355, PAGE 1055), OVER THAT PART
OF THIS PLAT LYING IN THE NE 1/4 OF SEC. 14, TWP. 28-S, R-1-W