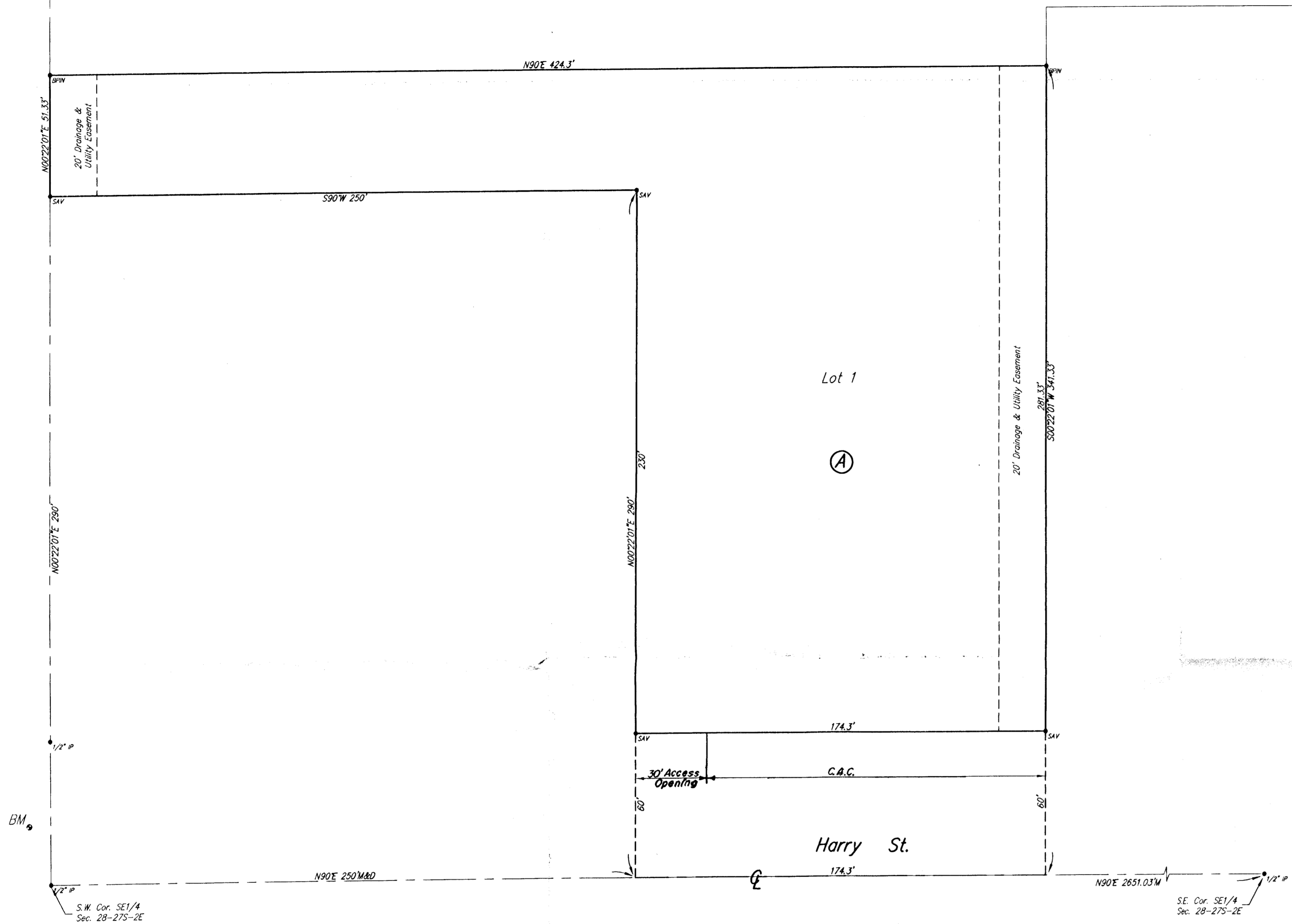


7-2-09

# BULLOCH ADDITION

Wichita, Sedgwick County, Kansas



State of Kansas) SS  
Sedgwick County)

We, Savoy Company, P.A., Surveyors in aforesaid county and state do hereby certify that, under the supervision of the undersigned, we have surveyed and platted "BULLOCH ADDITION", Wichita, Sedgwick County, Kansas and that the accompanying plat is a true and correct exhibit of the property surveyed, described as follows:

The north 51.33 feet of the south 341.33 feet of the west 424.3 feet of the SE1/4 of Sec. 28, Twp. 27-S, R-2-E of the 6th P.M., Sedgwick County, Kansas  
AND  
Beginning 250 feet east of the S.W. Corner of the SE1/4 of Sec. 28, Twp. 27-S, R-2-E of the 6th P.M., Sedgwick County, Kansas; thence east, along the south line of said SE1/4, 174.3 feet; thence north, parallel with the west line of said SE1/4, 290 feet; thence west, parallel with the south line of said SE1/4, 174.3 feet; thence south, 290 feet to the place of beginning.

All Public easements and dedications being vacated by virtue of K.S.A. 12-512(b).  
Savoy Company, P.A.

Date: 1 July 2009  
*Mark A. Savoy* Surveyor  
Mark A. Savoy PLS #788

Know all men by these presents that we, the undersigned, have caused the land described in the surveyors certificate to be platted into a Lot, a Block and Street to be known as "BULLOCH ADDITION", Wichita, Sedgwick County, Kansas. The street is hereby dedicated to and for the use of the public. The utility and drainage easements are hereby granted as indicated for the construction and maintenance of all public utilities, and for drainage purposes. A drainage plan has been developed for this plat and all drainage easements and rights-of-way shall remain at established grades or modified with the approval of the Engineer of the appropriate governing body, and unobstructed to allow for the conveyance of stormwater. Access control is hereby granted as indicated on the face of the plat.

This plat of "BULLOCH ADDITION", Wichita, Sedgwick County, Kansas has been submitted to and approved by the Wichita-Sedgwick County Metropolitan Area Planning Commission, Wichita, Kansas.

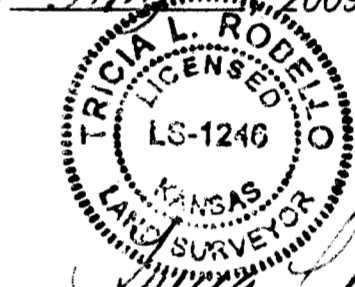
Dated this \_\_\_\_\_ day of \_\_\_\_\_, 2009.  
Wichita-Sedgwick County Metropolitan Area Planning Commission

\_\_\_\_\_  
Darrell A. Downing Chair  
\_\_\_\_\_  
John L. Schlegel Secretary

This plat approved and all dedications shown hereon, accepted by the City Council of the City of Wichita, Kansas, this day of \_\_\_\_\_, 2009.

\_\_\_\_\_  
Carl Brewer Mayor  
\_\_\_\_\_  
Karen Sublett City Clerk

Reviewed in accordance with K.S.A. 58-2005 on this 1st day of July, 2009.



*Tricia L. Robello* Deputy County Surveyor  
Tricia L. Robello, L.S. #1246

*Gordon A. Bulloch* Gordon A. Bulloch  
*Barbara O. Bulloch* Barbara O. Bulloch

Entered on transfer record this \_\_\_\_\_ day of \_\_\_\_\_, 2009.

\_\_\_\_\_  
Kelly B. Arnold County Clerk

State of Kansas) SS  
Sedgwick County)

The foregoing instrument acknowledged before me, this \_\_\_\_\_ day of July, 2009, by Gordon A. Bulloch and Barbara O. Bulloch, husband and wife.



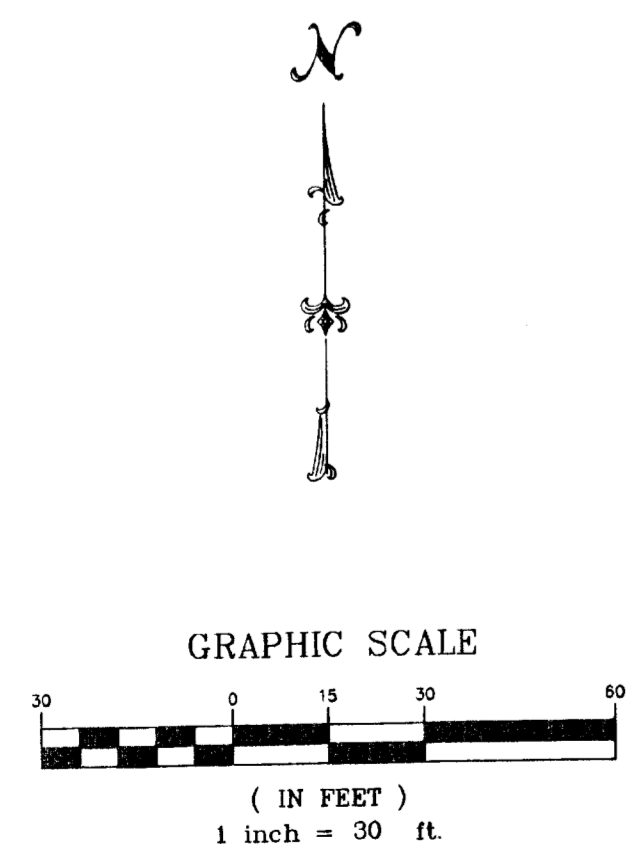
*Harlan D. Foraker* Notary Public  
My App't. Exp. 1-21-2012

State of Kansas) SS  
Sedgwick County)

This is to certify that this plat has been filed for record in the office of the Register of Deeds, this \_\_\_\_\_ day of \_\_\_\_\_, 2009, at \_\_\_\_\_ o'clock \_\_\_\_\_ M. and is duly recorded.

\_\_\_\_\_  
Bill Meek Register of Deeds

\_\_\_\_\_  
Tonya Buckingham Deputy



- SURVEY MARKER LEGEND**
- 1/2" IP ..... 1/2" IRON PIPE (FOUND)
  - BPN ..... 1/2" REBAR W/BAUGHMAN CAP (FOUND)
  - SAV ..... 1/2" REBAR W/SAVOY CAP (SET)
- BENCH MARK:**  
Square Cut on Top of North Curb 24.5 feet north and 9 feet west of the S.W. Cor. of the SE1/4 of Sec. 28-27S-2E.  
Elevation = 1,343.0 NAVD88

Closure Computation  
Northing Error = -0.0000'  
Easting Error = 0.0087'  
Error of Closure = 0.0087'  
Accuracy = 1:108,735

