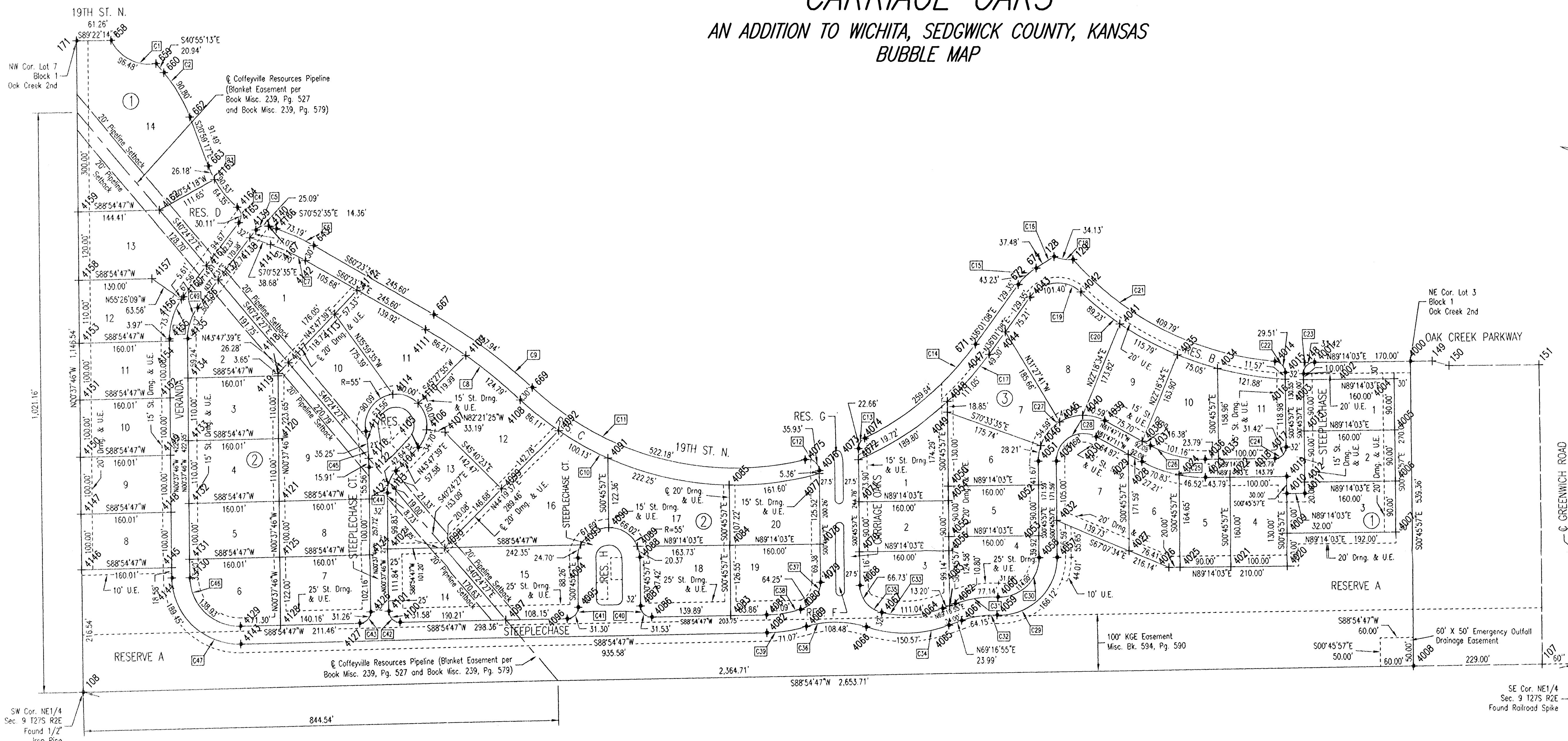


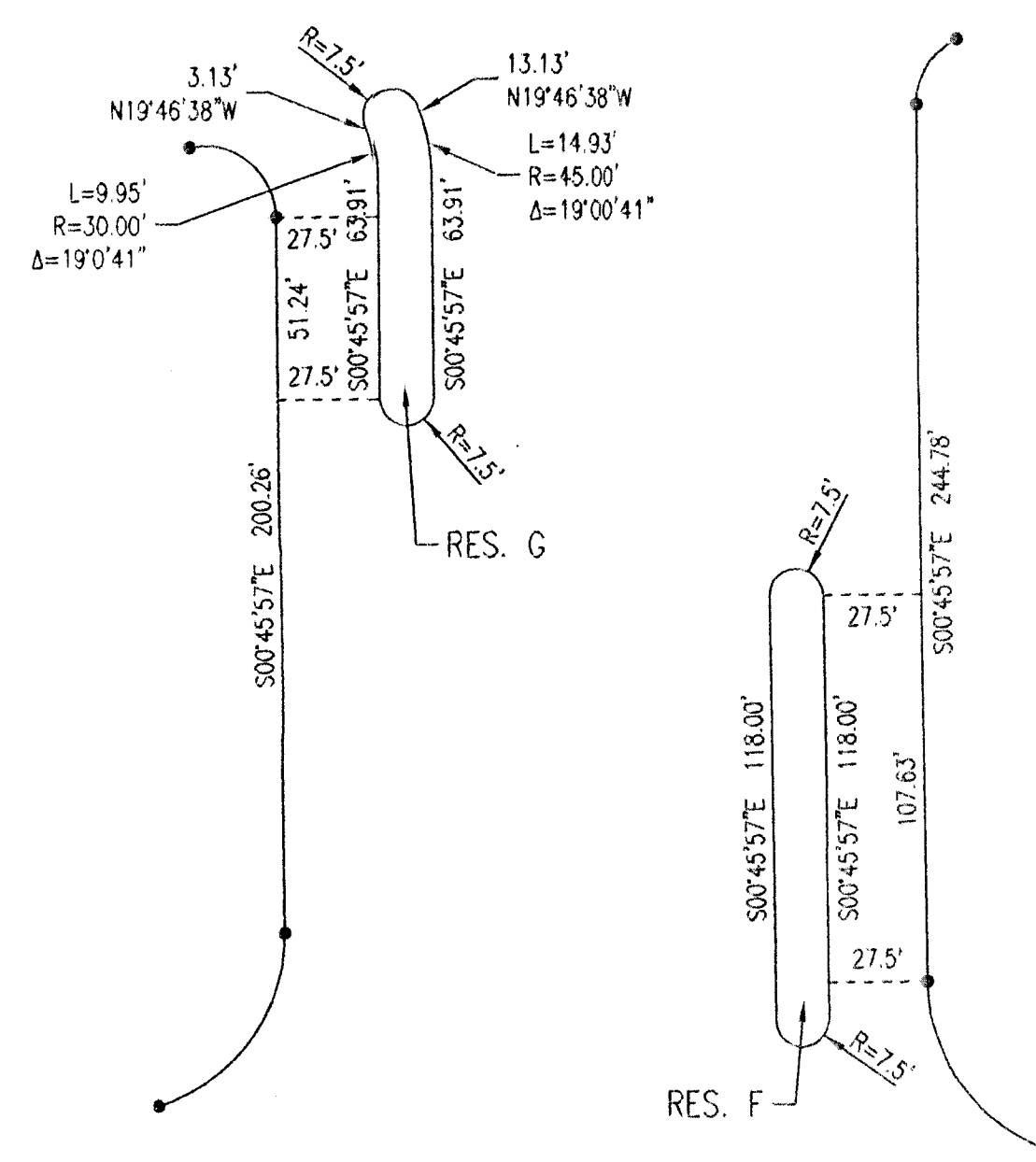
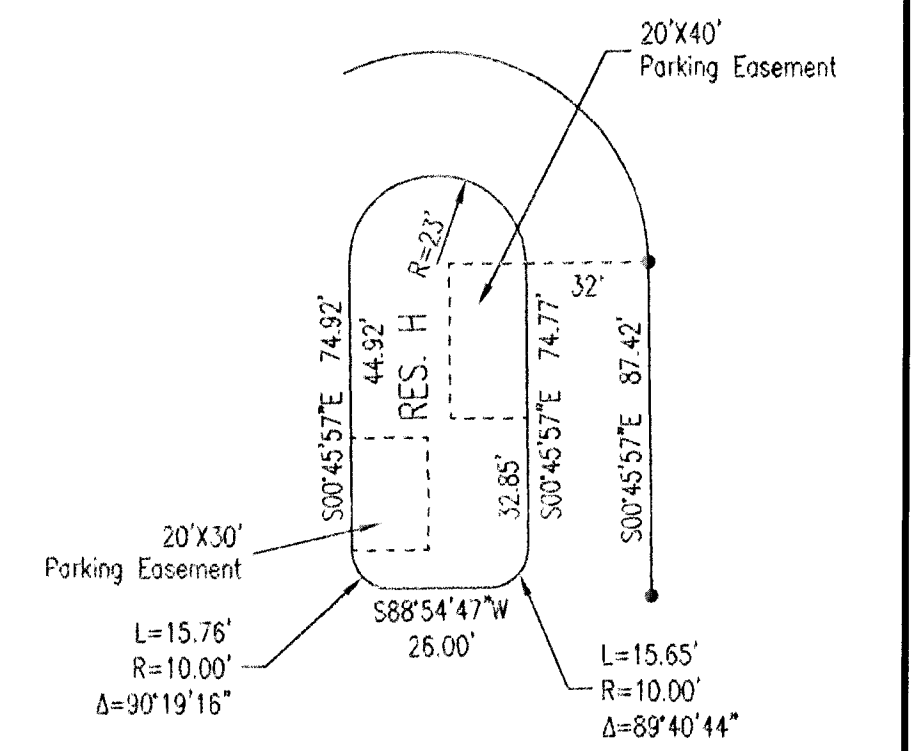
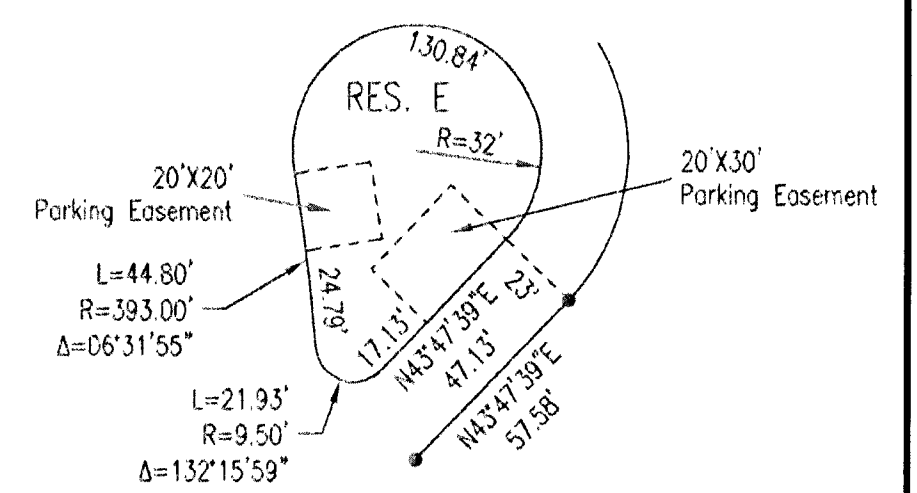
CARRIAGE OAKS

AN ADDITION TO WICHITA, SEDGWICK COUNTY, KANSAS

BUBBLE MAP



SCALE: 1" = 100'
 • = 1/2" REBAR W/PEC CAP UNLESS OTHERWISE NOTED



CURVE	RADIUS	DELTA	CURVE	RADIUS	DELTA	CURVE	RADIUS	DELTA	CURVE	RADIUS	DELTA
C1	75.00'	73°42'08"	C16	1,092.00'	01°58'00"	C31	190.00'	23°15'48"	C46	88.00'	90°27'27"
C2	261.00'	19°55'56"	C17	559.00'	30°50'09"	C32	158.00'	23°15'48"	C47	120.00'	90°27'27"
C3	185.00'	28°02'14"	C18	75.00'	26°04'30"	C33	190.00'	33°29'06"	C48	120.00'	37°52'18"
C4	20.00'	86°16'02"	C19	60.00'	96°49'37"	C34	222.00'	38°51'34"	C49	88.00'	37°52'18"
C5	20.00'	71°52'54"	C20	572.00'	40°15'47"	C35	50.00'	76°28'03"			
C6	400.00'	10°29'00"	C21	542.00'	43°19'12"	C36	175.00'	35°30'59"			
C7	370.00'	10°29'00"	C22	20.00'	84°32'47"	C37	50.00'	73°37'28"			
C8	912.00'	13°15'21"	C23	20.00'	90°00'01"	C38	218.00'	16°03'17"			
C9	942.00'	13°15'21"	C24	20.00'	90°00'00"	C39	250.00'	16°17'17"			
C10	559.00'	58°25'59"	C25	232.00'	28°58'47"	C40	20.00'	90°19'16"			
C11	529.00'	56°33'27"	C26	200.00'	28°58'47"	C41	20.00'	89°40'44"			
C12	20.00'	102°55'43"	C27	80.00'	118°58'48"	C42	20.00'	90°27'27"			
C13	20.00'	64°54'22"	C28	48.00'	118°58'48"	C43	20.00'	89°32'33"			
C14	529.00'	28°07'17"	C29	102.00'	93°18'40"	C44	55.00'	44°25'25"			
C15	108.00'	22°55'59"	C30	70.00'	93°18'40"	C45	370.00'	09°50'31"			

Drawn 08-17-2009 4:14:36 PM by AEE
 Plot Scale 1:100 08-17-2009 4:15:00 PM
 C:\2009\0923\0923 Bubble Map