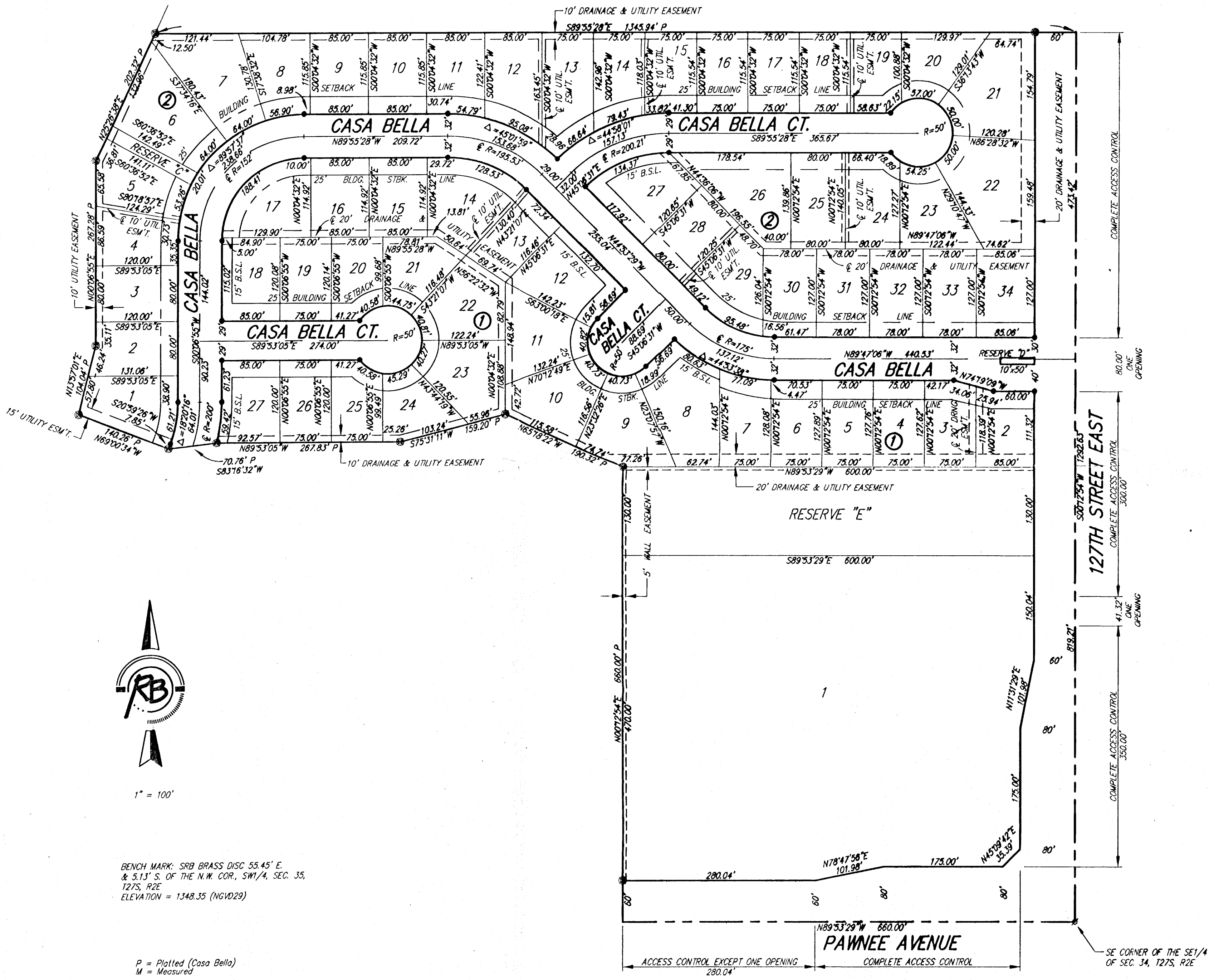


CASA BELLA SECOND ADDITION

FINAL TRACING REC'D Wichita, Sedgwick County, Kansas

8-7-08



BENCH MARK: SRB BRASS DISC 55.45' E. & 5.13' S. OF THE N.W. COR. SW1/4, SEC. 35, T27S, R2E
ELEVATION = 1348.35 (NGVD29)

P = Plotted (Casa Bella)
M = Measured

- SURVEY MARKER LEGEND**
- PK NAIL IN CONCRETE (FOUND - ORIGIN UNKNOWN)
 - 1/2" IRON PIPE (FOUND - ORIGIN UNKNOWN)
 - 3/4" IRON PIPE (FOUND - ORIGIN UNKNOWN)
 - ⊗ 5/8" REBAR W/GARBER CAP (FOUND)
 - ⊗ 1" BAR (FOUND - ORIGIN UNKNOWN)
 - ⊗ 5/8" REBAR W/SRB CAP (FOUND)
 - ⊗ 5/8" REBAR W/R&B CAP (FOUND)
 - ⊗ 5/8" REBAR W/R&B CAP (SET)

BLOCK	LOT NO.	ELEVATION (NGVD29)
2	1, 2, 3, 4, 5, 6, 7	1345.4
3	10, 11, 12	1345.4
3	1, 2, 3, 4, 5, 6, 7, 8, 9	1339.4
6	1, 2, 3, 4, 5	1336.8

State of Kansas) SS
Sedgwick County)

We, Ruggles & Bohm, P.A., Land Surveyors in aforesaid county and state, do hereby certify that, under the supervision of the undersigned, we have surveyed and platted "CASA BELLA SECOND ADDITION", Wichita, Sedgwick County, Kansas, and that the accompanying plat is a true and correct exhibit of the property surveyed, described as follows:

LEGAL DESCRIPTION:
The SE1/4 of Section 34, T27S, R2E of the 6th P.M., Sedgwick County, Kansas, EXCEPT the NE1/4 of said SE1/4, AND EXCEPT that portion platted as Casa Bella, Wichita, Sedgwick County, Kansas.

All public easements and dedications are hereby vacated by virtue of K.S.A. 12-512(b).

Ruggles & Bohm, P.A.

Thomas C. Ruggles
Thomas C. Ruggles
Land Surveyor

Know all men by these presents that we, the undersigned, have caused the land described in the surveyor's certificate to be platted into Lots, Blocks, Reserves and Streets, to be known as "CASA BELLA SECOND ADDITION", Wichita, Sedgwick County, Kansas. Utility easements are hereby granted for the construction and maintenance of all public utilities. Drainage easements are hereby granted to the public as indicated for drainage purposes. Reserves "A" and "B" are hereby reserved for irrigation, lighting, landscaping, gazebos, playground, structures, picnic areas/tables with canopies, and utilities confined to easements. Reserve "C" is hereby reserved for irrigation, walls, signage, gazebos, playground structures, picnic areas/ tables with canopies, walks, lighting, landscaping, berms, lakes, drainage, drainage structures, and utilities confined to easements. Reserve "D" is hereby reserved for irrigation and entry features. Reserve "E" is hereby reserved for irrigation, walls, signage, lighting, landscaping, lakes, drainage, drainage structures, and utilities confined to easements. The Reserves shall be owned and maintained by the Home Owners Association for the addition. The streets are hereby dedicated to and for the use of the public. Access Controls as indicated are hereby granted to the appropriate governing body. A drainage plan has been developed for this plat; all drainage easements and reserves shall remain at established grades, or as modified with the approval of the City Engineer, and unobstructed to allow for the conveyance of storm water.

Tara Development Inc.
Eugene Vitarelli
Eugene Vitarelli
President

State of Kansas) SS
Sedgwick County)

The foregoing instrument acknowledged before me, this 31st day of July, 2008, by Eugene Vitarelli, President of Tara Development Inc., on behalf of the corporation.

Mildred E. Franz
Mildred E. Franz
Notary Public
State of Kansas

My appointment expires 02-13-2011

We the undersigned, holders of a mortgage on a portion of the above described property, do hereby consent to this plat of "CASA BELLA SECOND ADDITION" Wichita, Sedgwick County, Kansas.

Collin Stieben
Collin Stieben
Assistant Vice President
Commerce Bank, N.A.

State of Kansas) SS
Sedgwick County)

The foregoing instrument acknowledged before me this 5th day of August, 2008, by Collin Stieben, Assistant Vice President of Commerce Bank, N.A., on behalf of the Bank.

Patsy E. Nellis
Patsy E. Nellis
Notary Public
State of Kansas
My App. Expires 12-31-09

My appointment expires 12-31-09

This plat of "CASA BELLA SECOND ADDITION", Wichita, Sedgwick County, Kansas, has been submitted to and approved by the Wichita-Sedgwick County Metropolitan Area Planning Commission, Wichita, Kansas.

Dated this _____ day of _____, 2008.

Wichita-Sedgwick County Metropolitan Area Planning Commission

Chairman
M.S. Mitchell

Secretary
John L. Schlegel

This plat approved and all dedications shown hereon accepted by the City Council of the City of Wichita, Kansas, this _____ day of _____, 2008.

At the Direction of the City Council

Mayor
Carl Brewer

City Clerk
Karen Sublett

Reviewed in accordance with K.S.A. 58-2005 on this _____ day of _____, 2008.

Robella
Deputy County Surveyor
Sedgwick County Kansas
Robella, LS #1246

Entered on transfer record this _____ day of _____, 2008.

County Clerk
Don Brace

State of Kansas) SS
Sedgwick County)

This is to certify that this plat has been filed for record in the office of the Register of Deeds, this _____ day of _____, 2008, at _____ o'clock _____ M. and is duly recorded.

Register of Deeds
Bill Meek

Deputy
Tonya Buckingham