

BENCH MARK: CHISELED SQUARE ON THE TOP OF CURB AT THE SOUTH CURB RETURN AT THE SOUTHEAST CORNER OF 33RD ST. N. AND ARKANSAS AVE. ELEVATION = 1317.54 (NAVD88)

Soil Type: Urban Land; Canadian Part  
Hydrologic Group: B

**Existing**  
West  
Impervious 0.53 ac.  
Grassed Area 3.25 ac.

Offsite  
Impervious 0.02 ac.  
Grassed Area 0.40 ac.

Total Impervious Area = 1.37 ac.

**PROPOSED**  
Area A  
Impervious 0.15 ac.  
Grassed Area 1.58 ac.

Area E  
Impervious 0.78 ac.  
Grassed Area 0.22 ac.

Area B  
Impervious 0.15 ac.  
Grassed Area 0.27 ac.

Area F  
Impervious 0.54 ac.  
Grassed Area 0.37 ac.

Area C  
Impervious 0.59 ac.  
Grassed Area 0.29 ac.

Area G  
Impervious 0.11 ac.  
Grassed Area 0.12 ac.

Area D  
Impervious 0.36 ac.  
Grassed Area 0.05 ac.

Area H  
Impervious 0.11 ac.  
Grassed Area 0.12 ac.

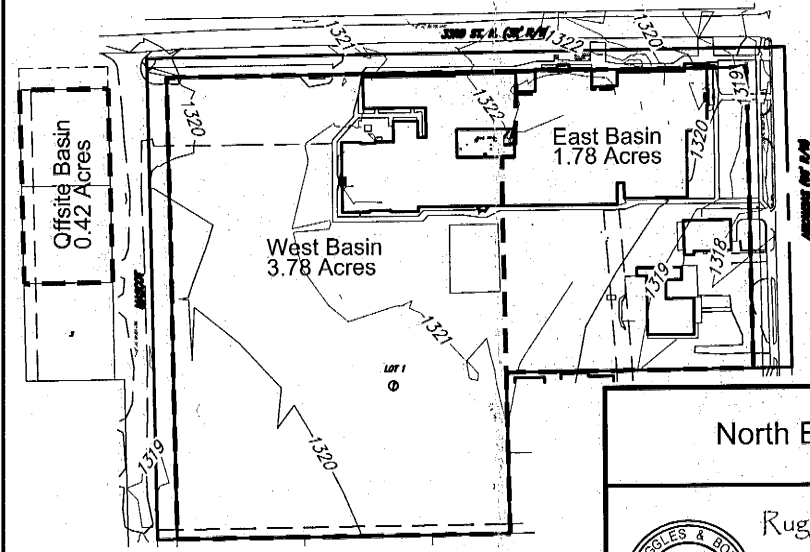
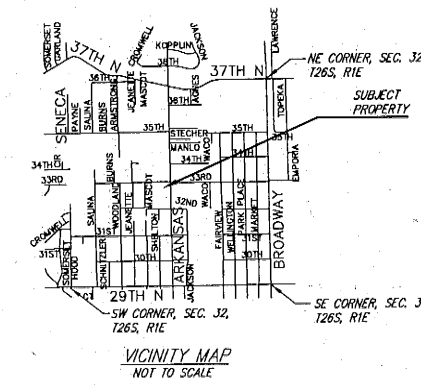
Total Impervious Area = 2.79 ac.

**Existing Condition**

	AREA	TC (min.)	C5	C100	I5	I100	C5	Q100
West	3.78	25	0.31	0.46	3.60	5.79	4.1	10.5
East	1.78	15	0.51	0.84	4.56	7.37	4.2	8.3
Offsite	0.42	15	0.25	0.43	4.56	7.37	0.6	1.3

**Proposed Condition**

	AREA	TC (min.)	C5	C100	I5	I100	C5	Q100
A	1.73	19	0.28	0.45	4.10	6.88	2.0	5.2
B	0.42	15	0.45	0.59	4.56	7.37	0.9	1.8
C	0.88	15	0.65	0.74	4.56	7.37	2.6	4.8
D	0.41	15	0.78	0.84	4.56	7.37	1.5	2.5
E	1.00	15	0.72	0.79	4.56	7.37	3.3	5.8
F	0.91	15	0.60	0.70	4.56	7.37	2.5	4.7
G	0.23	15	0.53	0.64	4.56	7.37	0.6	1.1
H	0.42	15	0.60	0.70	4.56	7.37	1.2	2.2



**DRAINAGE PLAN**  
North Elementary School Addition  
WICHITA, KANSAS

**Ruggles & Bohm, P.A.**  
Engineering, Surveying, Land Planning

924 North Main (316) 264-8008  
Wichita, Kansas 67203 (316) 264-4621 fax  
www.rbkansas.com E-mail: info@rbkansas.com



DRAWING FILE	PROJECT NUMBER	DATE	SHEET
Drainage Plan {Plan 1}		Dec. 22, 2009	1 of 1

