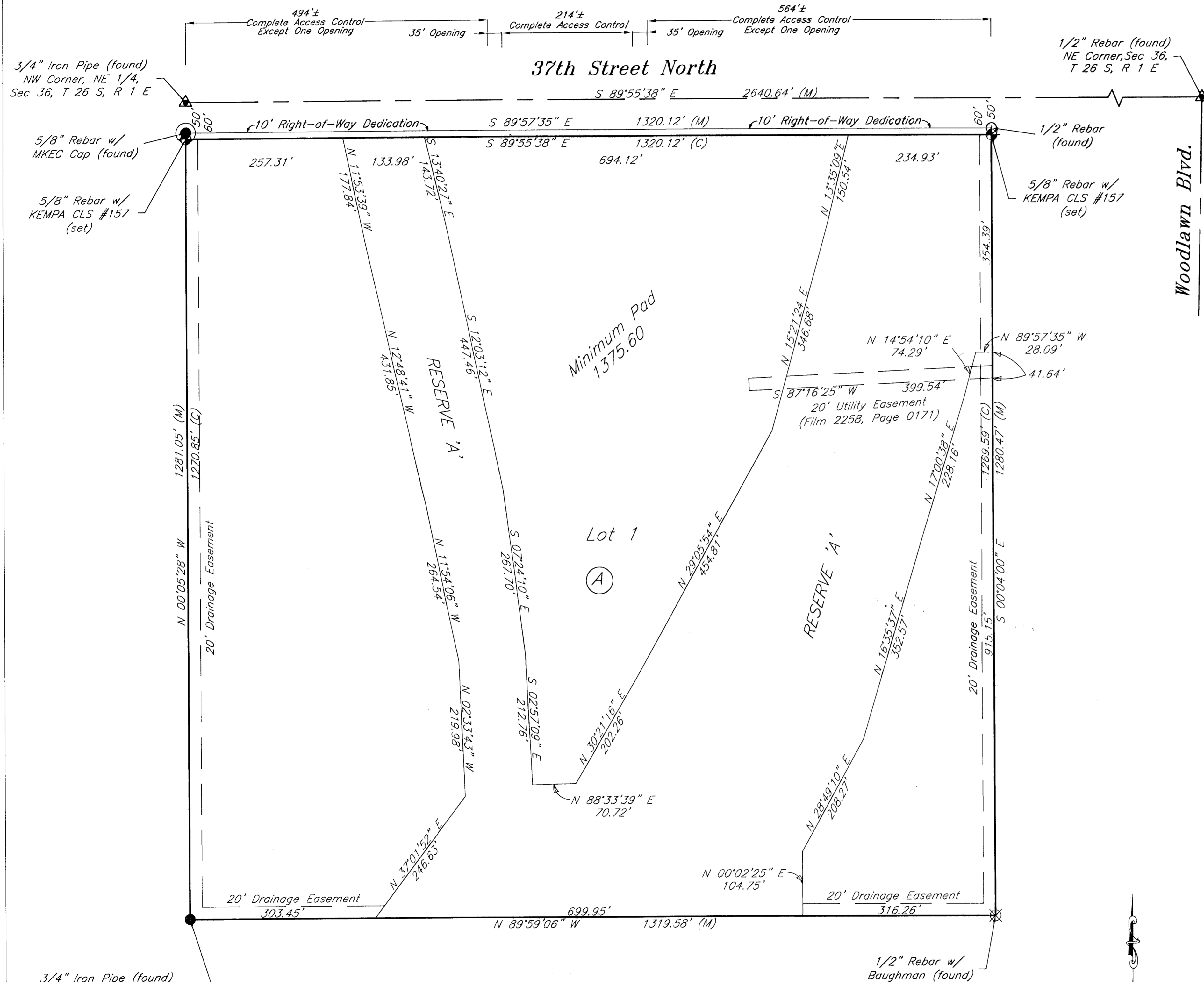


Chisholm Trail Church of Christ Addition

WICHITA, SEDGWICK COUNTY, KANSAS

Part of the Northeast 1/4, Section 36, Township 26 South, Range 1 East of the 6th. P.M.



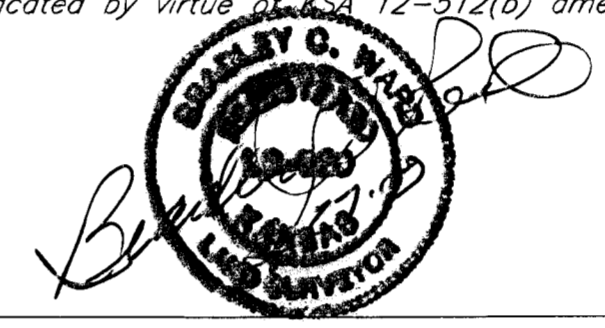
- LEGEND**
- ◆ 5/8" Rebar w/ Kempa CLS #157 (Set)
 - 1/2" Rebar (Found)
 - ⊗ 1/2" Rebar w/ Baughman Cap (Found)
 - 5/8" Rebar w/ MKEC Cap (Found)
 - ◆ 3/4" Iron Pipe (Found)
 - ⊕ Section Corner (Found)
 - (P) Platted
 - (M) Measured
 - (C) Calculated

State of Kansas } SS
County of Sedgwick }

I, Bradley C. Ward, a licensed land surveyor of the State of Kansas, do hereby certify that the following described tract of land was surveyed on the 5th day of February, 2009 and the accompanying final plat prepared and that all the monuments shown herein actually exist and their positions are correctly shown to the best of my knowledge and belief:

The Northwest 1/4 of the Northeast 1/4 of Section 36, Township 26 South, Range 1 East, of the 6th P.M., Sedgwick County, Kansas.

All easements and rights-of-way within said lots are hereby vacated by virtue of KSA 12-512(b) amended.



Bradley C. Ward, L.S. #920 Date 3.22.09

State of Kansas } SS
County of Sedgwick }

Know all men by these presents, that we, the undersigned, have caused the land described in the surveyor's certificate to be platted into a Lot and Block to be known as Chisholm Trail Church of Christ Addition, Wichita, Sedgwick County, Kansas. Any easements are hereby granted as indicated for constructing, maintaining, operating, and repairing public utilities. A drainage plan has been developed for the plat and all drainage easements, rights-of-way, or reserves shall remain at established grades or as modified with the approval of the applicable City or County Engineer, and unobstructed to allow for the conveyance of stormwater. Reserve A shall be owned and maintained by Chisholm Trail Church of Christ for storm water drainage and as a floodplain. And further that the land contained herein is held and shall be conveyed subject to any applicable restrictions, reservations and covenants now on file or hereafter filed in the Office of the Register of Deeds of Sedgwick County, Kansas.

Access Control is hereby granted as follows:
1. There shall be a maximum of 4 openings on 37th Street North.

By: Willard Crigler 4/08/09 Date
Willard Crigler, Elder of Building Committee, Chisholm Trail Church of Christ.

State of Kansas } SS
County of Sedgwick }

This instrument was acknowledged before me on this 8 day of April, 2009, by Willard Crigler, Elder of Building Committee, Chisholm Trail Church of Christ.

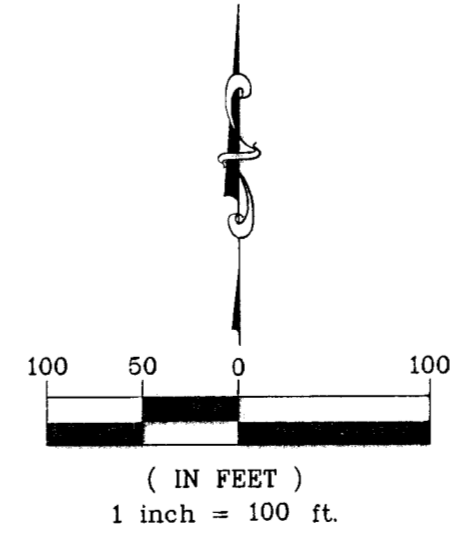
Salvina Denju
Notary Public
My Commission Expires: August 2010

By: Rodney C. Cousin 4-13-09 Date
Rodney C. Cousin - Assistant Vice President

State of Kansas } SS
County of Sedgwick }

This instrument was acknowledged before me on this 13 day of April, 2009, by Rodney C. Cousin, Assistant Vice President Commerce Bank, N.A.

Tisha Morrison
Notary Public
My Commission Expires: 2-7-2012



State of Kansas } SS
City of Wichita }

This plat of Chisholm Trail Church of Christ Addition, Wichita, Sedgwick County, Kansas, has been submitted to and approved by the Wichita-Sedgwick County Metropolitan Area Planning Commission, Wichita, Kansas. Dated this day of , 2009.

Darrell Downing, Chairman
John L. Schlegel, Secretary

State of Kansas } SS
City of Wichita }

This plat approved and all dedications shown hereon accepted by the City Council of the City of Wichita, Kansas, this day of , 2009.

At the Direction of the City Council
Karen Sublett, City Clerk

Carl Brewer, Mayor

Entered on transfer record this day of , 2009.

Kelly B. Arnold, County Clerk

State of Kansas } SS
County of Sedgwick }

This is to certify that this plat has been filed for record in the Office of the Register of Deeds this day of , 2009, at o'clock M, and is duly recorded.

Bill Meek, Register of Deeds

Tonya Buckingham, Deputy

Reviewed by Tricia L. Robello with K.S.A. 58-2005 on this 3rd day of April, 2009.

Tricia L. Robello
Deputy County Auditor
Sedgwick County, Kansas

Benchmark: C.O.W. Brass disc at Edgemoor and 37th street North; 39' North and 44' East of 1/4 Section Corner.
Elevation = 1381.53 NAVD88

Minimum Pad = 1375.60

Filename: 09008



FINAL TRACING RECD
4/14/09
REVISED